

# TENTH ANNIVERSARY

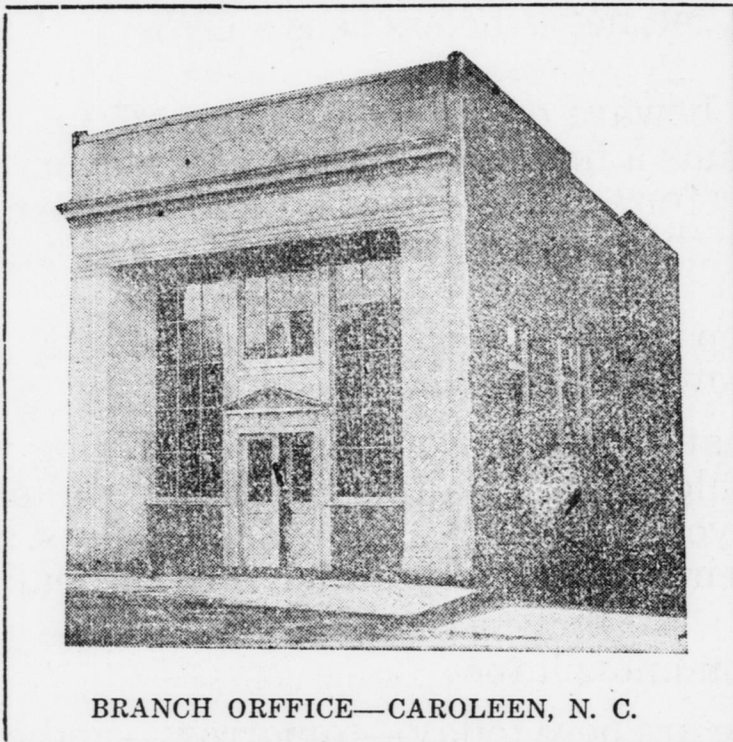
ESTABLISHED FEBRUARY 3rd, 1915

## FARMERS BANK & TRUST CO.

MEMBER FEDERAL RESERVE SYSTEM

FOREST CITY

CAROLEEN



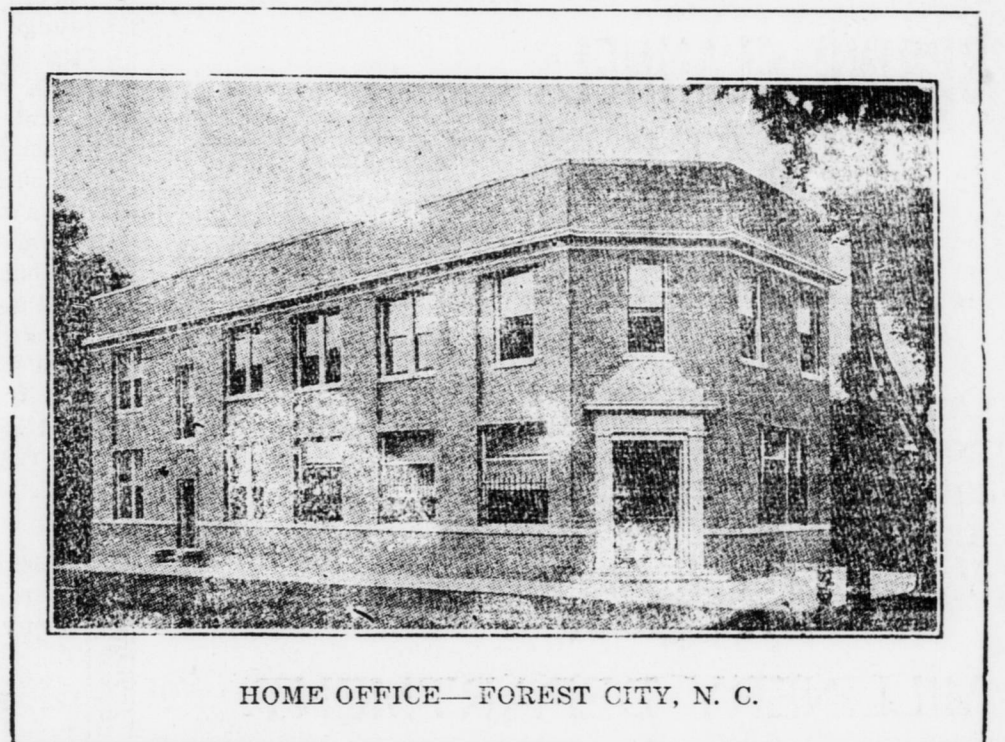
BRANCH OFFICE—CAROLEEN, N. C.

**OFFICERS:**

J. F. ALEXANDER,  
Chairman of Board  
B. B. DOGGETT,  
President  
J. H. THOMAS,  
Active Vice-President  
R. W. MINISH,  
Asst. Vice-President  
K. S. TANNER,  
Vice-President  
L. V. LEE,  
Vice-President  
G. P. REID,  
Vice-President  
B. H. LONG,  
Cashier  
R. E. BIGGERSTAFF,  
Assistant Cashier.  
CAROLEEN BRANCH  
W. L. HICKS,  
Cashier.

**DIRECTORS:**

J. F. ALEXANDER  
B. B. DOGGETT  
T. R. PADGETT  
G. P. REID  
J. R. MOORE  
W. R. HARRILL  
C. C. MOORE  
J. H. THOMAS  
C. M. HOLLAND  
J. W. SMITH  
A. V. HAMRICK  
T. B. LOVELACE,  
Macon, Ga.  
K. S. TANNER,  
Spindale, N. C.  
HUGH F. LITTLE,  
Marion, N. C.  
L. V. LEE,  
Lattimore, N. C.



HOME OFFICE—FOREST CITY, N. C.

### STRONGEST, COUNTRY BANK IN THE TENTH CONGRESSIONAL DISTRICT.

On February 3, 1915, this bank was opened for business, the founders having in mind the building up of this field as well as the promotion of the bank's interests. The whole efforts upon the part of the officers and directors of this bank, since that day of opening, ten years ago, down to the present good hour, has been to become thoroughly identified with the financial, industrial, agricultural and individual prosperity of the county and to be an ever increasing factor in the development of this territory. How well we have succeeded is best attested by the growth of this institution.

Our effort has not been centered upon those of large means. We have endeavored to give every possible encouragement to those of small means—people of frugal tendencies and of modest achievements—as well as to serve the larger and more

powerful clientele, realizing that in joining issues with every class the greatest accomplishment will be realized.

What part we have had in the development of Rutherford county during the ten years of the bank's existence is well known to the public. Many changes have taken place within this space of a few years, the county and the town have grown in wealth and prosperity, and, best of all, there appears to be a great future just now dawning. Great developments, an awakening of agricultural possibilities, more and varied manufacturing, an increase in property values and general prosperity seems destined to come to the county. This bank stands ready to do its part in the future, as in the past, by every individual or firm that is entering into this great work of building our county, of keeping business wheels turning, and who are to bring about

the things visioned for the best welfare of town and county.

The Farmers Bank & Trust Company has grown from modest beginning into the strongest country bank in the Tenth Congressional District. No small part of our business comes to us because of the kindly interest and co-operation of our customers, who have always recognized our efforts to give them the utmost in safety and service. They know that this Bank is a friendly, dependable Bank—and the word is passed along.

Is it not then to your best interest to become allied with a bank whose financial ability is unquestioned, whose officers and directors make it a personal point to look after your personal interests, and where you always are the recipients of a warm courtesy and efficient, prompt attention.

### Seeking New Business On Our Record

The Farmers Bank & Trust Company opened Feb. 3, 1915, with a paid in capital of \$40,000.00, which was increased during the same year to \$75,000.00, and during the same year we consolidated with the First National Bank.

Deposits have steadily grown, year by year, until they now amount to over one million, seven hundred thousand dollars.

In 1920 the bank's paid-in capital was increased to \$100,000.00 at which figure it now stands. During all this time the surplus has been steadily increasing and now stands at over \$100,000.00.

## Total Resources Over Two Million Dollars