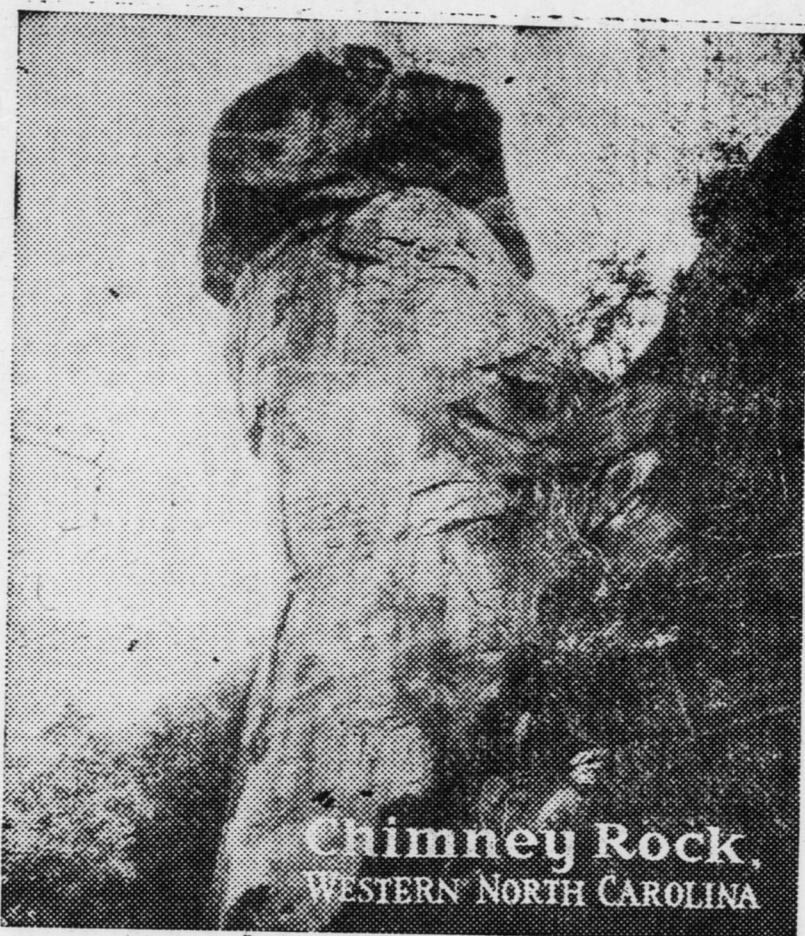


A Rutherford County Institution

"SOLID AS THE ROCK"



KEEPING PACE WITH RUTHERFORD'S PROGRESS—KEEPING FAITH WITH RUTHERFORD'S PEOPLE IS THE RECORD OF

Rutherford County's Youngest and Fastest Growing Bank

(Opened for Business August 5, 1924)

AN INSTITUTION FOR CHIMNEY ROCK, RUTHERFORD COUNTY AND WESTERN NORTH CAROLINA

Our Policy

We review our brief past with a sense of pride and, too, with a deep sense of gratitude for the liberal support that has been granted us and for the confidence that has been reposed in us. It has been this support that has enabled this bank to effect the growth it has, and for which we are thankful. In the future, as in the past, we pledge our every effort toward the moral and material welfare and upbuilding of Rutherford county and Western North Carolina.

OFFICERS

J. H. THOMAS, President
DR. L. B. MORSE, Vice President
J. M. FLACK, Vice President
L. C. COBB, Cashier

DIRECTORS

J. H. Thomas	Dr. M. H. Biggs
J. M. Flack	J. Harold Williams
J. A. Frady	L. C. Cobb
K. S. Tanner	G. Nanney
T. W. Freeman	T. F. Oates
Dr. L. B. Morse	S. E. Elmore
Dr. L. V. Lee	B. B. Doggett
W. F. Pryor	

This Bank heartily joins in extending greetings to the Lake Lure visitors upon the auspicious occasion marking the completion of the paving upon Highway No. 20.

The home-seeker and the investor is invited to investigate Chimney Rock and Rutherford County. We will gladly furnish any information or help desired.

The Chimney Rock Trust Co.

"Solid as the Rock"

Chimney Rock,

- - -

North Carolina