

S. P. U. SECURES 116 NEW INDUSTRIES

Piedmont Region Towns, Served by Company, Gets Majority of New Plants in 1930.

One hundred and sixteen new industries, an average of more than two a week, were projected in the piedmont Carolinas during 1930, a survey announced last week by the Duke Power company reveals.

Sixty-six of the industries are new plants established during the year by entirely new concerns while 50 are new plants or additions to plants projected by existing industrial concerns.

Diversification of new concerns is

The BEST Gray Hair Remedy is Home Made

To half pint of water add one ounce bay rum, a small box of Barbo Compound and one-fourth ounce of glycerine. Any druggist can put this up or you can mix it at home at very little cost. Apply to the hair twice a week until the desired shade is obtained. It will gradually darken streaked, faded or gray hair and make it soft and glossy. Barbo will not color the scalp, is not sticky or greasy and does not rub off.

Chas. Z. Flack

Real Estate
Rentals And
Insurance

Phone 40

Office over A&P Store
Forest City, N. C.

A WARNING

by your Fertilizer Dealer

No. 3

In a Series appearing in this newspaper

THIS is no year to take chances. If you are tempted to use "any old" fertilizer because it costs less, don't do it! Most of all, your crops need nitrogen—natural nitrogen—and that means Chilean Nitrate.

I've arranged for a big supply of Chilean Nitrate in new 100 lb. bags. It's cheaper than it has been for years. Better get your order in now, so you won't be sorry later on.

Your Fertilizer Dealer

CHILEAN NITRATE is original "Soda"—the natural nitrogen fertilizer that has been used for a hundred years in the South with best results. It increases yield and quality of every crop you grow. It's indispensable as a side or top dressing to insure against loss. And when you order your fertilizer, be sure to say Chilean Nitrate to your dealer. That one word, "Chilean," is your protection and your dealer's too. Chilean means the real thing—the nitrate all crop champions use. Remember the two kinds—Original Chilean (Crystalline) and Champion Brand (Granulated) both natural nitrate.



LOWEST PRICE
in years

NEW 100-lb. BAG
The bag without a backache

Chilean
Nitrate of Soda

EDUCATIONAL BUREAU

403 Professional Bldg., Raleigh, N. C.

In writing for literature or information, please refer to Ad No. 68

See Us For Prices On

CHILEAN NITRATE OF SODA

FOREST CITY SEED & FERTILIZER
COMPANY

Forest City, N. C.

a feature of the reports, with 22 different classifications included.

Textiles, not including hosiery and garments, take first place in the number of new establishments, with a total of 30. Hosiery mills, with 27, and garment plants, with eight, are other leaders.

In addition to hosiery, garments and general textiles, the report lists a number of other products now being manufactured in piedmont Carolinas. Among these are furniture, paint and varnish, buttons, automobile tires, dairy products, feed stuffs, mattresses, caskets, blankets, candy, sugars, granite products, paper boxes, crested timebr products, concrete tile, bedspreads, bakery products, cold drinks and miscellaneous articles.

The city of Charlotte, with 14, led in the number of new industries gained during the year. Burlington and High Point each secured eight and Winston-Salem had six. Five each went to Marion, Mount Airy and Hickory; four each to Greensboro, Greenville, S. C., and Durham; three each were located in Spartanburg, S. C., Salisbury, North Wilkesboro, Anderson, S. C., and Statesville, while Hendersonville, Goodsonville, Gastonia and Lexington got two each. Many places secured one new industry.

Spraying material. Farmers Hardware Co.

PILES PAIN THOUSANDS

An old Chinese Proverb says, "Nine in 10 suffer from piles," but the pain and itching of piles, protruding or bleeding piles usually are alleviated within a few minutes by soothing, healing Dr. Nixon's China-roid, fortified with a rare, imported Chinese Herb, having amazing power to reduce swollen tissues. It's the newest and fastest acting treatment out. You can work and enjoy life right from the start while it continues its healing action. Don't delay. Act in time to avoid a dangerous and costly operation. Try Dr. Nixon's China-roid under our guarantee to satisfy completely and be worth 100 times the small cost or your money back.

Peoples Drug Store.

FUNERAL HELD FOR MRS. ANNA FREEMAN

Widely Known Forest City Woman Passes at Home Here After Short Illness.

Mrs. Anna Long Freeman died at her home in Forest City at 9 o'clock Tuesday, March 3rd. She had been in ill health for many months but never complained. She bore her suffering with great patience and christian fortitude. She joined the Baptist church early in life and remained a faithful member until her death. She was strong in faith and a great believer in prayer, loved her family and was always devoted to their interests.

Mrs. Freeman was born in Rutherford county, was united in marriage to D. M. Freeman in 1894. Her husband preceded her to the grave some years ago. Mrs. Freeman is survived by the following children: Miss Huldah Freeman, C. M. Freeman, Mrs. P. J. Williams, all of Forest City; one brother, W. J. Long and one half brother Mr. J. A. Yelton, also survive with a great number of friends and relatives to mourn her loss.

Funeral services were held Wednesday from the Florence Baptist church by her pastor, Rev. L. N. Epley assisted by Rev. C. C. Matheny and Rev. Z. D. Harrill. A short service was held at Mt. Lebanon where she was once a member.

Her body was laid to rest in the cemetery there.

Mrs. Freeman was 56 years of age.

Pall bearers were Messrs Charley Blankenship, John Green, Dorsey Randall, Carl Haulk, Winfred Webb, Roswell Sorrels.

Flower bearers were Mrs. John Green, Mrs. D. Webb, Mrs. Lon Jones, Mrs. G. V. Frye, Mrs. Ed Jones, Miss Sarah Hardin, Mrs. Graham Lynch and Mrs. Shuford Baynard.

State's Farm Income Reduced Last Year

The farmers of North Carolina received \$42,760,355 less money during 1930 than they did in 1922, according to the N. C. Farm Business, published by the State college Extension Service. In 1922, the net farm cash income was \$104,470,000 and, in 1930, this income was approximately \$62,000,000, a decrease of 41 per cent. Last year, the farm cash receipts were \$192,842,633, farm cash expenses were \$131,123,136, leaving only \$61,719,697 for farmers of the state to use in paying taxes, buying clothing, paying bills for food, feed, fertilizer and other expenses.

The average net cash income for the year from 1922 to 1930 was \$83,472,396. The 1930 net cash income was approximately \$10,000,000 less than in 1929. This condition in the state, which is very serious, is due to the lower prices of cotton, tobacco and peanuts in particular. Cotton declined from 16.4 cents a pound in 1929 to 9.5 cents; tobacco, from 18 cents to less than 14 cents; and peanuts also. The low price of cotton was due to a world over-supply of American cotton, which increased from 19,320,000 bales in 1929 to 20,543,000 bales in 1930, with a corresponding drop in use of cotton by mills. Tobacco stocks on hand increased from 1,342,000,000 pounds in 1929-30 to 1,400,000,000 in 1930-31, despite a small increase in the use of cigarettes.

Reduction of these three crops is necessary in order to obtain a price which will cover the cost of production this year, the bulletin says. The state government is urged to cooperate in every possible way. The bulletin goes on to say:

"There is evidence that the world situation will not improve rapidly during the next year or so. If the present production of cotton continues with a falling off in purchasing power of our customers, then North Carolina farmers will find themselves in dire circumstances in 1931 and 1932. Referring to the tobacco situation, the bulletin says that, if the crop is not cut materially, "indications are that North Carolina producers will experience during 1931 one of the most disastrous years since the war."

Picture framing and automobile glass replaced while you wait. Farmers Hardware Co.

RUTHERFORD 28TH IN POPULATION

County Has 74.4 Inhabitants To Square Mile—State Average is 65 to Square Mile.

Rutherford county ranks twenty-eighth among the one hundred counties of the state in population density with 74.4 inhabitants per square mile, according to a report issued by the University of North Carolina News Letter this week.

Forsyth county is the most thickly populated county in the state with 287.8 inhabitants per square mile. Tyrrell county has the smallest number inhabitants per square mile, with 13.2 to the mile. The state average is 65 inhabitants to the square mile.

Rutherford county has an area of 544 square miles. Robeson county is the largest county in the state, having an area of 990 square miles, while Chowan is the smallest with 165 square miles.

The twenty-eight counties of the state which lead in inhabitants per square mile, including Rutherford, are for the most part the manufacturing counties of the Piedmont region. Included in those are Forsyth, Durham, Gaston, Mecklenburg, Guilford, Buncombe, Rowan, Cabarrus, Catawba, Cleveland, Alamance, Davidson, Iredell, Lincoln and Rutherford counties.

The state's population at the beginning of 1930 was 3,170,276. Only eleven states have more people than North Carolina. Twenty years ago there were fifteen states that had more people than this state. We have supplanted four states in two decades.

The percent increase in population during the last decade was 23.9. Only six states grew more rapidly, on a percent basis, than North Carolina. They were California, Florida, Michigan, Arizona, New Jersey, and Texas.

Our numerical increase in population for the decade was 611,153. Only seven states had larger total gains in population, namely New York, California, Texas, Michigan, Illinois, Pennsylvania and New Jersey.

The land area of North Carolina is 48,740 square miles. Twenty-seven states are larger. The state averages 65 inhabitants to the square mile. There are only thirteen states that have more people per square mile than has North Carolina. No southern state is more densely settled than North Carolina, unless Maryland and West Virginia are classed as southern. In 1900 there were twenty states that were more densely settled.

Nature Thought of Everything

Nature thought of everything when the human body was made. When the body is about to become ill, nature planned danger signals to warn us. Thus, if our children grind their teeth when they sleep, or lack appetite, or suffer from abdominal pains, or itch about the nose and fingers, we should know that they may have contracted worms. Then, if we are wise, we buy a bottle of White's Cream Vermifuge and safely and surely expel the worms. Thus we avoid the danger of very serious trouble. White's Cream Vermifuge costs only 35c a bottle, and can be bought from Peoples Drug Store.

Husband (to hired girl)—"Oh, Sarah, can you tell me of my wife's whereabouts?" Sarah—"No—unless they're in the wash."

100 Pecans, grafted Scheley Paper Shells, 6 to 10 feet high, at 50c each. Farmers Hardware Co.

The YELLOW PENCIL with the RED BAND
EAGLE PENCIL CO.
MIKADO

G. M. Huntley & Son

Funeral Directors
Licensed Embalmer.
Free Ambulance Service.
DAY OR NIGHT, PHONES 292 AND 95.
WEST MAIN STREET. FOREST CITY, N. C.

An Amazing Value

If Not Satisfied Money Refunded

Ladies' Hose

EVERY PAIR PERFECT 39c PAIR DIRECT BY MAIL

3 for \$1.00

Longwear Dull Finish Fashioned Service Weight

COLORS

DUSKEE	SUNTAN	BLACK
BLON DORE	MODE	WHITE
NAIVE	BASQUE BROWN	SABLE
NUDE	GUN METAL	MIRAGE

SIZES 8½ to 10

Postage prepaid when payment accompanies order

DOLLAR SILK HOSIERY CO.

51 Bennett Bldg. Wilkes-Barre, Pa.

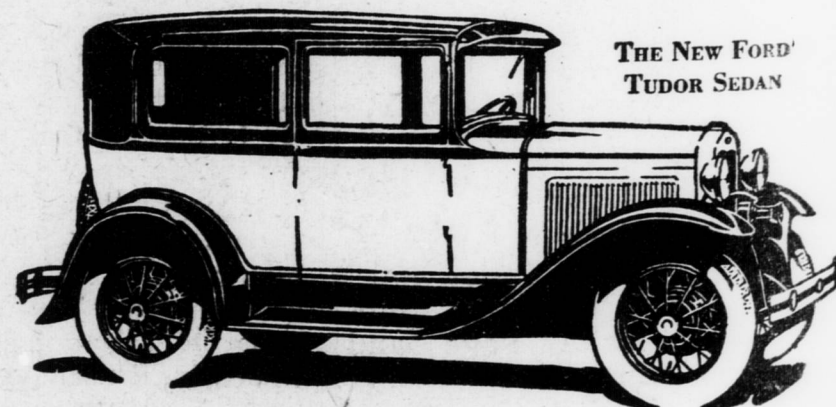
More than 73,000 miles in a New Ford

THE substantial worth of the new Ford is reflected in its good performance, economy and reliability. Its stamina and endurance are particularly apparent in sections where bad roads and severe weather put a heavy extra burden on the automobile.

In less than a year a new Ford Tudor Sedan was driven more than seventy-three thousand miles over a difficult route. The operating cost per mile was very low and practically the only expense for repairs was for new piston rings and a new bearing for the generator.

The car carried an average load of 1200 pounds of mail and was driven 250 miles daily. "The Ford has never failed to go when I was ready," writes one of the three mail carriers operating the car. "The starter did the trick last winter even at 34 degrees below zero. The gas runs about 20 miles per gallon. At times I pull a trailer whenever I have a bulky load."

Many other Ford owners report the same satisfactory performance. Every part has been made to endure—to serve you faithfully and well for many thousands of miles.



THE NEW FORD
TUDOR SEDAN

LOW PRICES OF FORD CARS

\$430 to \$630

F. O. B. Detroit, plus freight and delivery. Bumpers and spare tire extra at small cost. You can purchase a Ford on economical terms through the Authorized Ford Finance Plans of the Universal Credit Company.

FEATURES OF THE NEW FORD

Attractive lines and colors, rich, long-wearing upholstery, sturdy steel body construction, Triplex shatter-proof glass windshield, silent, fully enclosed four-wheel brakes, four Houdaille double-acting hydraulic shock absorbers, aluminum pistons, chrome silicon alloy valves, torque-tube drive, three-quarter floating rear axle, more than twenty ball and roller bearings, and bright, enduring Rustless Steel for many exterior metal parts. In addition, you save many dollars because of the low first cost of the Ford, low cost of operation and up-keep and low yearly depreciation.

