

**NEWPORT AGRICULTURAL BOYS ATTEND FARMER LUNCHEON**

Sewport, April 23—Livestock judges, public speaking contestants, agriculture teachers and guests from district one and two were delightfully entertained at a luncheon given at Raleigh in the State College dining hall, Saturday, April 21. About three

hundred attended this gala farm event.

The luncheon was opened and closed by the formal exercises of the Young Tar Heel Farmer Association. Mr. Roy H. Thomas, noted as co-master and Dr. C. S. Long, pastor of the Cary Baptist Church pronounced the benediction. The program included a number of

fine talks from the following prominent men: T. E. Brown, Director, Vocational Education; Dr. Clarence Poe, Editor, The Progressive Farmer and Southern Ruralist; E. N. Meekins, District supervisor of agriculture education; James M. Gary, Manager, Chilean nitrate educational bureau; Dr. A. T. Allen, State Supt. of public instruction, and Ira Alli-

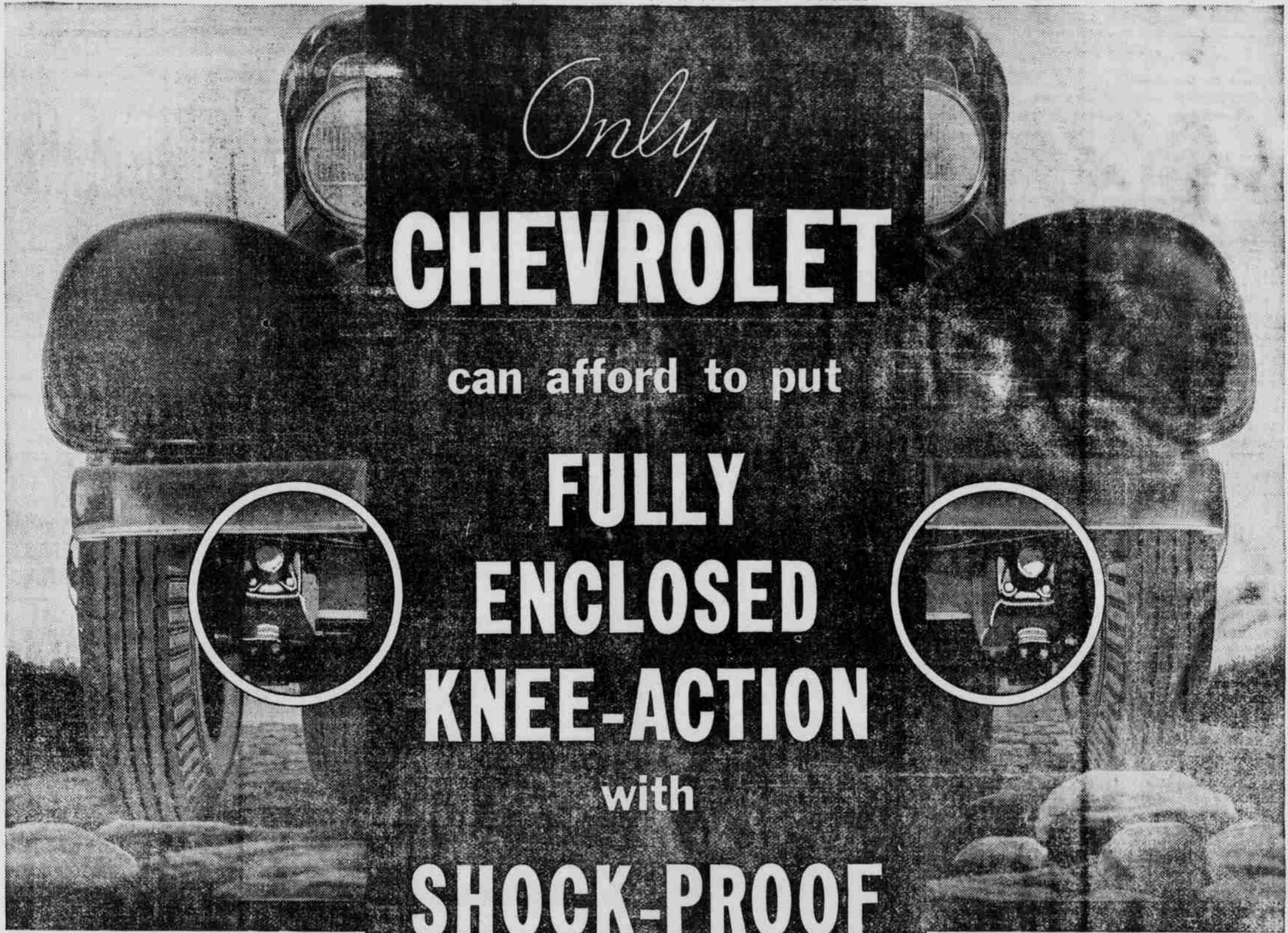
good, former student of vocational agriculture, Creswell High School. Mr. T. E. Brown, stressed the value of vocational training in the life of a student, stating that the purpose of this training was not necessarily to grow crops, but to grow men. The music for this luncheon was furnished by former members of the

Newport Chapter of Young Tar Heel Farmers. The "merry makers" were Everett Gould and Gerald Gould, noted for their famous barn dance music. Other members of the Newport chapter attending this event were Cornell Garner, president, and George Roberts, secretary. They were accompanied by their teacher and adviser, C. S. Long.

C. S. LONG, Agricultural Instructor

Alleghany Irish potato growers recently sold 200 bushels of certified seed to the local relief office.

Wilson county farmers have purchased 15,000 pounds of lespedeza seed cooperatively this season.



**CHEVROLET** When you pay the price of a Knee-Action car, you naturally want *genuine* Knee-Action and all that goes with it. You want the new gliding ride at its best. You want the huskiest, sturdiest front-end you can buy. And, of course, you want shock-proof steering. You pay for them all—but you get them all, in the low-price field, only from Chevrolet. The reason is simple. Fully-enclosed Knee-Action wheels are costly to build—so costly that only Chevrolet, world's largest builder of cars, can afford to make the necessary huge investment in new machinery—and still keep prices among the lowest of the low. Only Chevrolet has the resources and the assured volume of sales that permit this extra production cost. Chevrolet does it because Chevrolet believes that, to **KEEP ON SELLING THE MOST CARS, YOU MUST KEEP ON BUILDING THE BEST.**

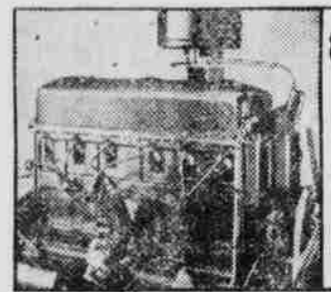
CHEVROLET MOTOR CO., DETROIT, MICH.  
Compare Chevrolet's low delivered prices and easy G.M.A.C. terms. A General Motors Value

on a low-priced car

*Drive it only 5 miles* and you'll never be satisfied with any other low-priced car



**SHOCK-PROOF STEERING**  
Not found on any other low-priced car



**80 HORSEPOWER 80 MILES PER HOUR**  
Valve-in-head six of matchless economy



**CABLE CONTROLLED BRAKES**  
Smooth and safe in any weather



**BODIES BY FISHER**  
The biggest, finest bodies on any low-priced car

**SAVE WITH A CHEVROLET VALVE-IN-HEAD SIX**

SOUND CHEVROLET COMPANY INC. MOREHEAD CITY, N. C.