

GET CHRISTMAS  
COPY IN EARLY  
FOR AD-TAKER  
DIAL 448-1

# THE BEAUFORT NEWS

Carteret County's Oldest Newspaper—Established 1912

SHOP EARLY  
ONLY 14 MORE  
SHOPPING DAYS  
'TIL CHRISTMAS

VOLUME XXVII; NO. 50.

BEAUFORT, N. C., THURSDAY, DEC. 7, 1939.

PUBLISHED WEEKLY

## TOWN BOARD FOR BID SALE OF BEER HERE ON SUNDAY

Jackson Day Dinner  
County Chairman

Plan Bicycle Rules  
For Town Also  
Discussed

Town Commissioners at their regular monthly meeting on Monday night enacted an ordinance effective immediately that all establishments in Beaufort which sell beer must close on Saturday night at 12 o'clock and remain closed until 7 o'clock Monday morning. The ruling will effect two places on Front Street, the establishment operated by "Pop" Nassef at the corner of Front and Turner Streets and Tallyho Tavern in the center of the main business block and two Negro restaurants north of the railroad.

The ruling was a climax to a complaint lodged against the Nassef place at the November meeting by Commissioner C. C. Guthrie. At that meeting he gave eye witness description to alleged rowdiness which took place at this location. The Commissioners ruled that Nassef would be given 30 days to get his business in shape and that he must close on December 6. On Monday night however, he was present at the meeting and through his attorney E. Walter Hill asked for an amendment to the ruling which would permit him to stay open. Two or three persons at the meeting stated that they were patrons of "Pop's" place and that the rowdiness there was no worse than any "beer joint" down town.

After some discussion the former ruling was changed and in the

## CAPT. SLATE TOLD ROTES OF DRY ICE

Good Attendance  
At Meeting  
Tuesday

Capt. Thomas B. Slate, who is internationally recognized for his research work in dry ice was guest speaker at the Rotary Club meeting here this week. Sent to Beaufort and the U. S. Fisheries Laboratory on Piver's Island by the government to continue his research into the possibility of dry icing methods being used to relieve the fishing industry, Capt. Slate made another important discovery which he believes will help the industry. He discovered the successful experiments in "fish-farming" which Dr. H. F. Prytherch director of the U. S. Fisheries Laboratory is conducting here.

(Continued on Page 8)

## Christmas Seal Sale Progresses

The annual Christmas Seal Sale in Beaufort and Carteret is making satisfactory progress under the direction of Mrs. Gary Allen. In addition to the sales made direct to local business firms and individuals, support to the campaign is being given by the schools and civic organizations of the county. Seventy-five per cent of the total amount realized from sale of seals will be retained locally for tubercular welfare work.

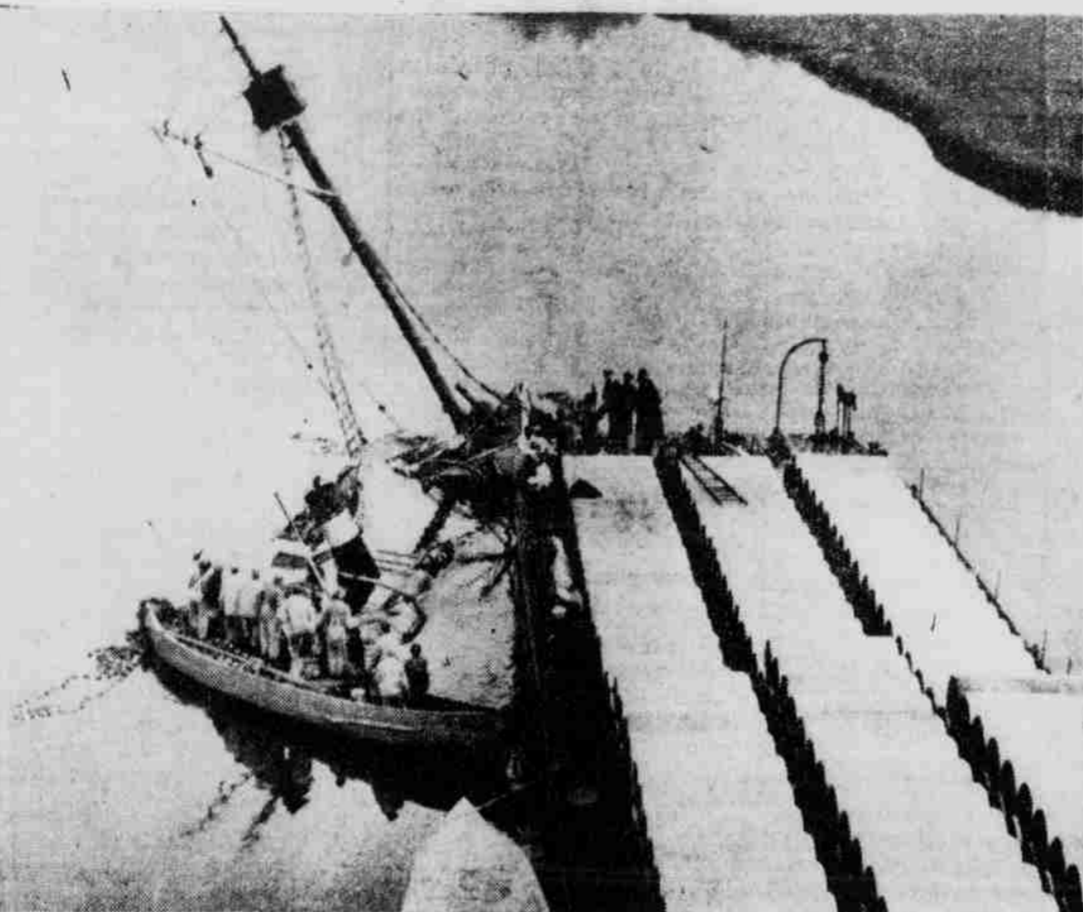
## Rev. Ben H. Gehring Resigns As Pastor Of Baptist Church

Rev. Ben H. Gehring tendered his resignation as pastor of the First Baptist Church here during last Sunday night. He asked that his resignation be accepted to take effect at any time between now and January 1. His congregation however, requested that he remain until February 1, but Rev. Mr. Gehring said this would depend upon the wishes of his new charge to which he has been appointed.

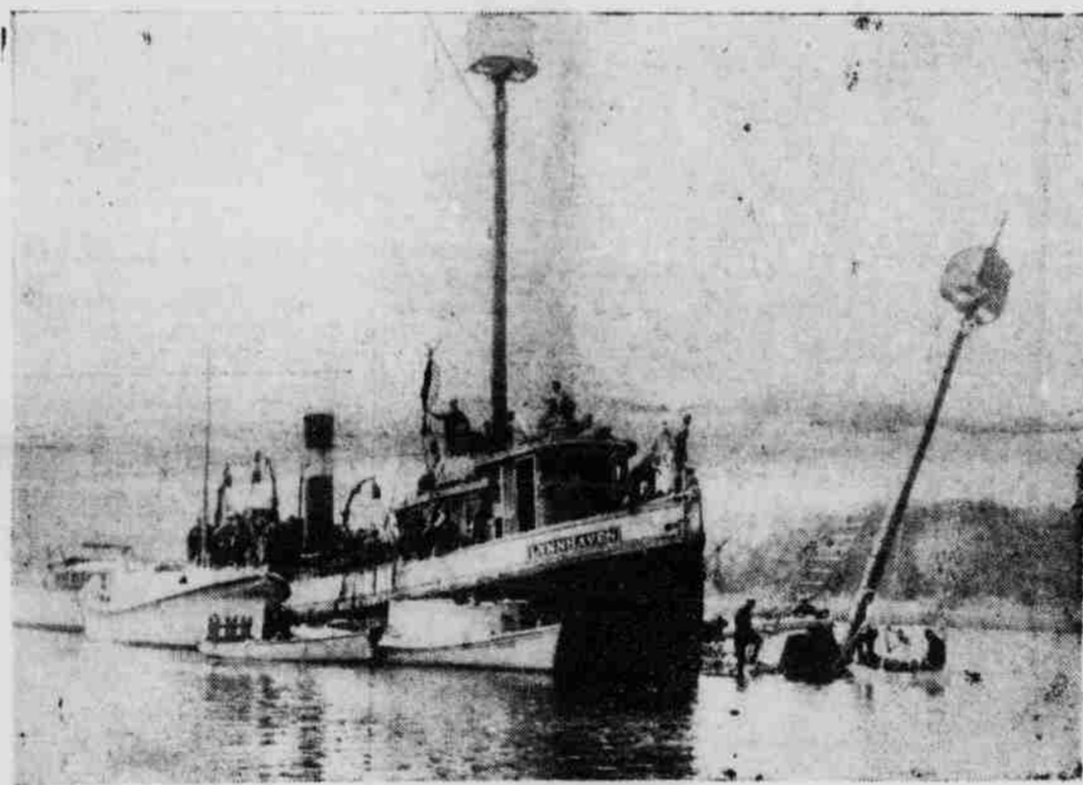
He will become pastor of a Baptist Church in Vinton, Louisiana, and wired his acceptance of the pastorate on Tuesday evening. He gave as his reasons for resigning

(Continued on Page 8)

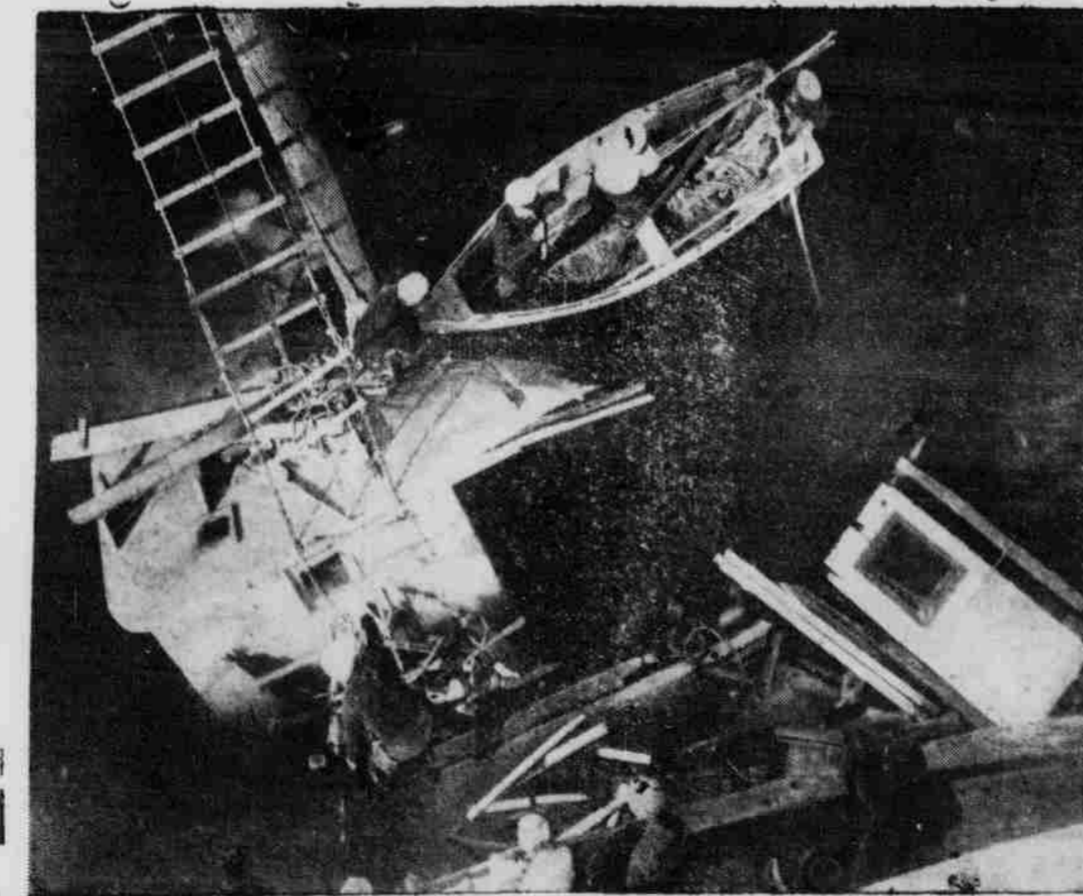
## Southland and Espee-Especo Collision Pictures— Carteret's Worst Marine Tragedy Claimed Ten Lives



ABOVE PICTURE made at sunrise on Saturday morning, November 18, shows barge Espee laden with empty chlorine gas drums as it was jammed with Carteret Fish and Oil Company's menhaden vessel Southland. Nine bodies were still missing as this shot was made from mast of Lynhaven which was tied alongside the tug Especo which was shoving (not towing) Espee north through inland waterway, near Core Creek bridge when crash occurred.—(Photo by Aycock Brown.)



THE LYNHAVEN, sister ship to Southland and U. S. Coast Guard rescue boats are shown in this picture taken later Saturday morning when efforts were being made to retrieve the bodies of seven Negroes who had been drowned like trapped rats when the Southland crashed and was sent to bottom of 15-foot deep canal.—Photo by Roy Eubanks



UNTIL THE last body was found Coastguard men searched for the missing. This picture shows early rescue operations when crews from Fort Macon Station under command of Roland Styron, from Cape Lookout under command of Capt. Dameron Meekins and from Core Banks under command of Capt. Monroe Gillikin, searched the wreckage for bodies. Later crew members of the cutter Pamlico arrived on the scene and assisted in search.—(Photo by Roy Eubanks.)

Aftermath of the tragedy was an investigation by a 3-man "A" Board composed of Judge Staley, U. S. Department of Justice, Capt. Carlson, U. S. Steamboat Inspection Service and Capt. Crapster, Norfolk Division Commander, U. S. Coast Guard. Testifying before this Board in Morehead City and Norfolk were survivors of all vessels involved in crash. J. F. Duncan is attorney for owners of the Southland; Hamilton and McNeill are local representatives of the barge-tug owners. What will eventually grow out of the tragedy in way of damage suits (if any) is not known at this time.—(Cuts for illustrations furnished through courtesy of Otis Black. Washington Herald-Times, Washington, D. C.)

## Seeley To Supervise County Tax Listing

Annual Membership  
Meeting Of C. of C.  
Tonight; 7 O'clock

H. P. Edwards, president of the Atlantic and East Carolina Railroad is scheduled to make the principal talk at the annual membership meeting and banquet of the Chamber of Commerce at the Inlet Inn here tonight at 7 o'clock. A feature of the meeting will be the election of officers for the organization to serve during the coming year.

## December Term Of Court In Session

Judge J. Paul Frizzelle of Snow Hill is presiding over the December term of court in session here this week. Up until today a number of civil actions had been tried. A complete story of the court activities will be presented in this newspaper next week. The cases tried brought a number of out of town attorneys to Beaufort during the week.

## DIRECT TELEPHONE ROUTE FOR B. & M.

The Beaufort & Morehead City Railroad which has been described by Robert Ripley as the shortest line in America, owning no rolling stock, which is actually making money, "believe it or not" has improved facilities now with the establishment of direct telephone connections between the local headquarters and Goldsboro, via A. and E. C. lines.

## MAKE SURVEY FOR HARKERS ISLAND BRIDGE

Reported Survey Is  
Being Made From  
Straits

It was reported here this week that State Highway Engineers are now surveying for the proposed Straits-Harkers Island bridge. Whether this is part of the survey promised Chamber of Commerce officials by Commissioner Ernest Webb and his District Engineer Spruill in Kinston recently which would also include the "three way" bridge to contact Lenoxville-Straits-Harkers Island could not be learned.

Earl Davis of Harkers Island was

## Bloodhounds Seek Trail Of Robbers

Bloodhounds were brought here today from Wilson to trail the robbers who broke into at least two places last night. Up until the time we go to press today no one had been apprehended. The break-ins occurred at the B. and M. freight office, where L. W. Jones and George Brooks, Jr., checked up and could find nothing missing and also the store of J. A. Lewis on Ann Street.

## Local Firm Low Bidder On Pier For Postoffice

Eure Brothers of Beaufort with main offices on Craven Street were the low bidders on the proposal to build the bulkhead pier in front of the U. S. Postoffice here, it was revealed on Tuesday. As this story was written the exact amount of bid could not be determined but it was approximately \$9,500. It was stated that this bid was approximately \$2,000 lower than the next lowest. Several firms were bidding on the project.

A few days ago a representative of Tidewater Construction Company in Norfolk flew here to look over the property before making a bid. The pier will not be constructed of metal, however it will be of the bulkhead type and a small green or park will be in center. The pier was obtained through efforts of the Chamber of Commerce with the aid of Representative Graham A. Barden.

## Commissioners Met Monday To Name Tax Listers

Fred R. Seely was appointed supervisor of tax listing in Carteret County by the Board of County Commissioners at their meeting here on Monday. Appointment of Tax Listing officials in December is the earliest it has ever been done before. They will start listing the first Monday in January. For several years the listing has taken place beginning the first Monday in April. Years ago it took place in June. A general law throughout the State requires the listing in January. It means that millions of dollars in taxes will be saved by the State, especially from big tobacco companies which usually have their taxable tobacco out of the State by April, Seely's job will continue for a period of three months.

The listers' job must be completed within 30 days. Tax listers for various parts of the County appointed by the Board follows:

## REA Official Coming To County On Friday To Discuss Project

Dudley Bagley, NCREA Administrator of Raleigh wired Aycock Brown, secretary of the Chamber of Commerce that he would be in Carteret County on Friday of this week to discuss the proposed rural electric line for the Core Creek-Harlowe section. Mr. Bagley is coming to the County at the request of Representative Graham A. Barden who conferred with him in Raleigh a few days ago relative to the project.

## Beaufort-Smyrna Cage Game Friday

The boy's teams of Beaufort and Smyrna will meet in a double header basketball match here at the School Gymnasium on Friday night at 7:30 o'clock. Much interest has been shown in the games because in a similar doubleheader last week, Smyrna licked the locals.

## TIDE TABLE

Information as to the tide at Beaufort is given in this column. The figures are approximately correct and are based on tables furnished by the U. S. Geodetic Survey. Some allowances must be made for variations in the wind and also with respect to the locality, that is whether near the inlet or at the head of the estuaries.

HIGH	Friday, Dec. 8	LOW
5:57 AM.		11:32 AM.
6:12 PM.		12:20 PM.
Saturday, Dec. 9		
6:46 AM.		12:24 AM.
7:00 PM.		1:11 PM.
Sunday, Dec. 10		
7:33 AM.		1:12 AM.
7:46 PM.		1:57 PM.
Monday, Dec. 11		
8:17 AM.		1:57 AM.
8:31 PM.		2:40 PM.
Tuesday, Dec. 12		
9:00 AM.		2:39 AM.
9:15 PM.		3:21 PM.
Wednesday, Dec. 13		
9:35 AM.		3:23 AM.
9:57 PM.		4:00 PM.
Thursday, Dec. 14		
10:23 AM.		4:03 AM.
10:41 PM.		4:40 PM.

## Covering The Waterfront

Guest Columnist  
News Story In The  
DAILY ADVANCE  
Elizabeth City, N. C.

MANTEO, Dec. 2.—By the time the yarn crossed Oregon Inlet headed north it was encrusted with grisley details, each of them authenticated by people who had seen or touched some item salvaged from the shark's belly when a dismayed CCC boy at Cape Hatteras set out to practice a little taxidermy only to abandon it in sheer horror when a human hand slithered through the first exploratory incision.

NOT JUST a human hand, but a wrist with a watch strapped around the wrist. Also a belt-buckle with an initial on it, and a leather-bound note book, with its pages filled with writing in some strange language, believed to be German, together with other miscellaneous matters not readily identifiable due to the fact that the shark's digestive juices had been at work on them.

JUST SO the story stood in its bare feet when it crossed Oregon Inlet the day after Thanksgiving and headed north, attended by au-

(Continued on page 3)