



THE BEAUFORT NEWS



Carteret County's Oldest Newspaper—Established 1912

VOLUME XXVIII; NO. 51

BEAUFORT, N. C. THURSDAY, DECEMBER 19, 1940.

PUBLISHED WEEKLY

NEW PLANE IS PURCHASED BY COAST AIRWAY

Six Passenger Waco Going In Service On Local Route

Ocracoke - Manteo Transportation Company purchased its first plane this week, a 6-passenger Waco which will be placed in service by Coast Airways along the "Gulf Stream Route" from Norfolk to Beaufort-Morehead City just as soon as the Civil Aeronautics Authority issues an operations permit for the line. R. S. Wahab of Ocracoke and Baltimore notified The Beaufort News of the

Tide Water To Move Airport Wire Poles

Tide Water Power Company was scheduled to start work today on removing the string of poles in West Beaufort from adjacent to Fourth Avenue to Third Avenue. The line at present prove as obstructions to planes landing and taking off on the runways. Transfer of the poles to new locations will remove this hazard. C. E. Kilburn, field manager for Tide water with headquarters in Wilmington was here to make arrangements for removing the poles.

purchase through a copy of telegram he sent on Sunday to chief pilot and Operations Director J. Dave Driskill in Manteo.

Driskill planned a flight here last Sunday to confer with local parties interested in the establishment of the line but a heavy down-pour of rain prevented him coming any farther than Ocracoke Island. He will probably fly here this week-end as he has already sought information relative to condition of the landing facilities in West Beaufort. The new Waco cabin plane is faster than the Stinson he uses in air-taxi service along the Outer Banks.

The new plane will be registered as the property of the Ocracoke-Manteo Transportation Company of which R. Stanley Wahab is the principal owner. Already this corporation operates a motor bus service between Ocracoke and Hatteras and other enterprises. The charter of the transportation company is being amended to include aviation privileges. Negotiation for insurance on the plane are being handled by Mr. Wahab in Baltimore.

Seal Sale Going Over Top Locally

Mrs. J. G. Allen reported this morning that Beaufort Consolidated School had sold 2,500 Christmas Tubercular Seals and that from all indications other schools in the county would make an equally as good record. Mrs. Allen is the county chairman of sales and she said that Carteret's quota of \$195 would be attained and probably passed this year as everyone is rallying to the Tubercular Seal cause.

Subscribe to The Beaufort News—\$1.50 per year

ALMANAC HISTORICAL EVENTS

- December
- 20 South Carolina secedes 1860.
 - 21 Winter begins 6:55 P. M.
 - 23 U. S. Marines in Nicaragua, 1814.
 - 24 U. S. and England end war, 1814.
 - 25 Christmas
 - 26 American victory at Trenton, 1776.

BIRTHDAYS Of Famous People

- December
- 20 Harvey Firestone, tires, 1868.
 - 21 Albert Payson Terhune, author, 1872.
 - 22 E. A. Robinson, poet, 1861.
 - 23 Joseph Smith, Mormon, 1805.
 - 24 Kit Carson, scout and pioneer, 1809.
 - 25 Sir Isaac Newton, scientist, 1642.
 - 26 Admiral Geo. Dewey, 1837.

MANY LICENSES FOR 1941 SOLD BY NEW BUREAU

Nearly 500 auto and truck licenses for 1941 have been sold by the License Bureau of Carolina Motor Club at Sound Chevrolet Company in Morehead City, but there are still hundreds of persons who have failed to get their new tags. Mrs. Vernon Guthrie, in charge of license tag sales at the Motor Club branch office urges car and truck owners to buy their licenses now before the last minute rush.

There will be no extension of time this year, in other words, persons who fail to have 1941 licenses on their auto or trucks after midnight, December 31, will be subject to arrest by State Highway Patrol. This is the first year that it has been possible to buy auto licenses in Carteret County. Previously it was necessary to go to New Bern or order direct from Raleigh.

Salvation Army Christmas Tree Service Monday

Capt. E. V. Farmer, in charge of the Beaufort Outpost of the Salvation Army is going forward with plans for a Christmas Tree service on next Monday night. The services will be held under the Community Tree in front of the post office building.

Main part of the exercises will be gifts that will be distributed to the under-privileged children. Special music will also be featured. Co-operating with the Salvation Army in preparing the list of children who will be eligible for gifts are several local persons who are familiar with welfare conditions.



Information For Those Who Want Holly Ridge Jobs

Carteret Coast citizens who want jobs at Holly Ridge where the Government is building a Coast Artillery Anti-Aircraft Camp, are urged to contact their local employment agency instead of going to Holly Ridge. In Carteret the agency is the N. C. Employment Service under the direction of W. C. Carleton. His office in Municipal Building, Morehead City, is open for applicants each Tuesday. Other information about work at Holly Ridge appears under the Jacksonville story which follows:

JOB SERVICE

Jacksonville December 17.—The State Employment Service has been designated as the official hiring agency for the four construction firms handling the new center at Holly Ridge, near Jacksonville, Onslow County.

R. Mayne Albright, director, said that all persons interested in jobs on the project should register at their home employment service office, and lists would be available at Holly Ridge for requisition of needed workers from local offices throughout the State.

Albright said it was expected that 10,000 persons would be employed on the construction, which would be completed within three months.

In addition to the persons to be put to work at Holly Ridge, Albright said there were more than 125 immediate job openings to defense industries in the State.

Further advice about job seeking at Holly Ridge appeared in the News and Observer editorial printed below:

"STAY AT HOME"

Job seekers who have been pouring into Holly Ridge, the small hamlet in Eastern North Carolina which is soon to be the site of an enormous anti-aircraft base have been advised to "stay at home" until assured of jobs by their local employment agencies.

That is good advice for all those seeking jobs. Federal employment agencies have been developed to the point that it no longer necessary or desirable for persons seeking employment to seek it on the spot. The only certainty about such a venture is the expense incurred.

ISLAND BRIDGE DEDICATION IS PLANNED SOON

Span Will Be Open To Traffic By New Years

BLAKELY POND DRIVES ACROSS BRIDGE FIRST

Blakely Pond of Davis dropped by The Beaufort News office this week to report that he was the first person (excepting the State Highway workers) to drive an automobile from mainland to Harkers Island. The event, if it can be classed as such, took place on Wednesday. Actually the bridge will not be opened for another week or two and unless plans have been changed since a Beaufort Newsman talked to Highway Officials Ernest Webb, W. J. Spruill and Roy Hart on Wednesday the bridge will not be opened to traffic until after Christmas.

Previously it had been reported that the bridge would be opened by Christmas. Certain parts which had to be made to order for the draw-span was responsible for slowing up operations so that opening date came a few days later than originally announced.

Commissioner Webb told The Beaufort News representative that the highway leading from U. S. 70 to the bridge which is now being graded and nearing completion will be paved within the next six months. It is necessary for the graded road to pass through a stage of settling before paving operations can begin. When completed Harkers Island will be about 15 miles or 20 minutes from Beaufort for the average driver. Until the road is paved, the speed of autos will be slowed up a bit after leaving Route 70.

Will Probably Have Dedication Soon

As is customary when a new bridge is completed, there will be a celebration in the form of dedication exercises at the bridge at some early date. It is understood that Earl Davis and other prominent citizens of Harkers Island have already started making arrangements for this celebration which it properly published and planned should make a temporary "boomtown out of the village on the island.

At the dedication prominent officials of the State (probably headed by Governor J. Melville Broughton) will make addresses. This will be followed by talks from highway, and county officials and to top it all off will be a gigantic oyster roast, fish fry or something of a kindred nature. More will be published about the dedication of the Island bridge after the holidays.

The highway officials stated when here on Wednesday that at the beginning the draw-span would be hand operated but that sometime in January (just as soon as the Harkers Island Electric Co-operative extended lines and equipment arrived) the span would be operated electrically.

New Recreation Center To Open On Friday Night

Beaufort's new Recreation Center opens Friday night, December 20, at 7 o'clock. Square dance, strong music, everybody invited.

Christmas tree for pre-school group Friday morning at 10:30. Parents and friends invited. In the afternoon at four o'clock the larger children are having a Christmas party.

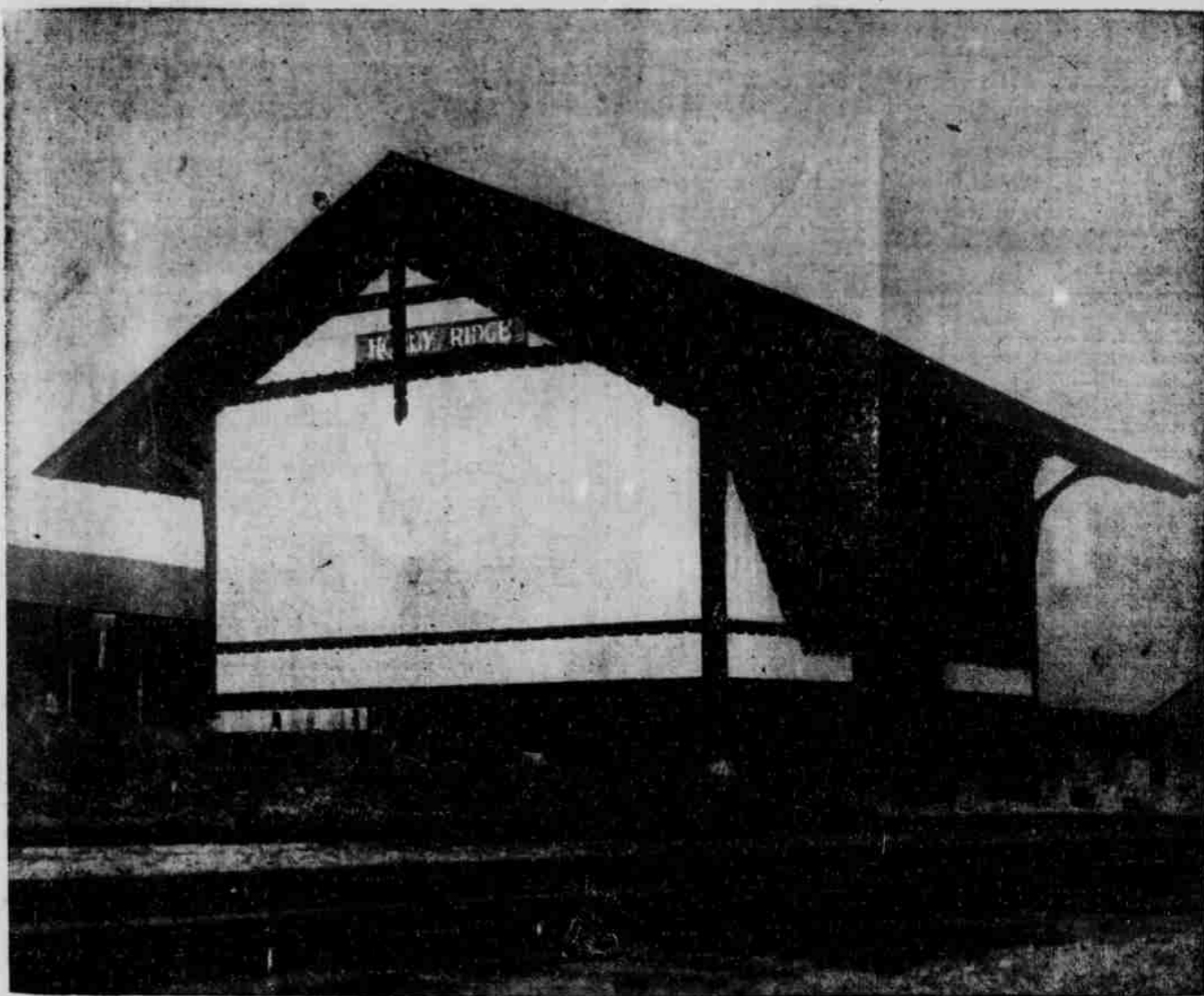
The dance Friday night will close activities at the Center until Thursday, December 26th, 9 A. M. WPA Recreation has been carried on in Beaufort for almost five years at the American Legion Hut.

The new building and playground at the corner of Pollock and Broad Streets has been made possible by the Town of Beaufort, local organizations and citizens and the Work Projects Administration. Activities there will be under the supervision of WPA leaders at all times.

It is planned to have the Center open several nights each week as well as during the day. Schedules and activities will be announced later.

All activities are open to the public at all times.

Holly Ridge Railroad Station Is In Center Of Newest 'Boom Town'



PICTURED ABOVE is the Atlantic Coast Line's station building at Holly Ridge adjacent to U. S. 17, some 20 miles south of Jacksonville and 30 miles north of Wilmington, which is almost in the very center of North Carolina's newest "boom town." Already engineering parties are laying off the land for construction of the U. S. Army's Anti-Aircraft Base at Holly Ridge. Telephone and power companies are busily engaged in stringing lines to the site and State Highway and Public Works crews are engaged in resurfacing the highway between the Onslow and New Hanover County Seats. Take a good look at the above building because it won't be there long—primarily because it cannot accommodate the bustling Army city of 20,000 which will spring into being at Holly Ridge within three months.—(Cut courtesy STAR-NEWS—Photo by Humphrey—Other Holly Ridge photos on front page Second Section today.)

Christmas Edition

Christmas Edition of The Beaufort News will go to press at noon on Tuesday, December 24, reaching local subscribers during the afternoon. This is being done for the benefit of our advertisers who will be inserting Christmas greeting messages to their customers. While most of the local firms have already placed their orders for Christmas Greeting messages, a few have not and those who are planning to tell customers by way of the press that they appreciate the business that has been given them and that they extend best wishes to everyone at Christmas, are urged to have ad copy in not later than noon on Monday, December 23. In other words, next week's edition of The Beaufort News will be out on Tuesday, instead of Thursday.—The Publishers.

Eastern Farmers Repaid \$135,000 To PCA Last Year

Farmers in Carteret, Craven and Pamlico Counties served by the New Bern Production Credit Association repaid more than \$135,000 of farming operations loans during the 12 months ending September 30, H. L. Joslyn said today following a meeting of the board of directors of the association.

Mr. Joslyn is a member of the board of directors from this area. The Association which has its office at New Bern makes loans for crop and livestock production and general farming operations in Carteret, Craven and Pamlico Counties.

Director Joslyn said the amount of loans on the books of the association at the end of the last quarter was approximately \$74,000, reflecting an increase in business compared to one year earlier.

Nearly 300 farmers in the three counties are financing their farming operations on a cooperative basis through the association, Mr. Joslyn said.

The directors of the New Bern Production Credit Association are H. L. Joslyn, President, L. H. Cannon, G. Tull Richardson, M. F. Aldridge and Jack D. Brinson. R. F. Allen is Secretary-Treasurer.

Sequoia

J. Lyman Stewart of Norton, a Jackson County farmer, says the new Irish potato variety Sequoia is smoother, the vines stay green much longer, and yields are 40 to 50 per cent better than other varieties.

FLASH

Just as we go to press today Aycock Brown, Editor of The Beaufort News received from Congressman Barden the following telegram: "Rural Electrification Administration has just approved allotment of one hundred and forty three thousand dollars to Craven-Carteret Project. Official Announcement will go out immediately."

Community's Yule Tree Is Beautiful

A traveling man has visited just about every Eastern North Carolina town since Christmas decorations have been erected saw Beaufort's community tree on the court of Government Pier in front of Post Office building here last night and remarked: "It is the most beautiful Christmas tree I have seen in any Eastern Carolina town." That was from an outsider. Local people too have paid high compliments to the decorators of the Community tree which is sponsored by the Town. Credit for the decorations goes to members of The Beaufort Fire Department.

Intake Day For WPA Postponed

Mrs. George Henderson, superintendent of Public Welfare stated today that WPA Intake Day which is ordinarily held on each Tuesday will be postponed from next Tuesday, December 24th to the following Tuesday, December 31.

Construction Of U. S. Army Anti-Aircraft Base At Holly Ridge Now Getting Underway

Tiny Hamlet Will Become Large Army City

THOUSANDS WILL BE GIVEN EMPLOYMENT

Holly Ridge is Eastern North Carolina's current edition of a boom town. The tiny hamlet which was founded by the Atlantic Coast Line Railroad (or its predecessors) as a wooding station some 60 years ago when the tracks were laid between New Bern and Wilmington, has come out of its Rip Van winkle existence and almost overnight has become such a crowded place that people who are working there have to commute between such places as Wilmington or Jacksonville each day. It will be only a matter of a few weeks until there will also be commuters going there each day from Beaufort, Morehead City and other places just as far away.

Holly Ridge today with its 28 residents will be a bustling base of the U. S. Army's Coast Artillery Anti Aircraft forces tomorrow or by late Spring at any rate. In the meantime some 10,000 persons will be employed in building this army base which will have hundreds of barracks buildings, officers quarters, and other buildings necessary to accommodate some eight or more regiments with a total complement of over 20,000 soldiers and almost a dozen regiments.

Holly Ridge apparently cannot conceive the magnitude of the whole thing. They will talk about the huge defense project but instead of telling you something, they are more than likely going to ask you what you know. About the only resident of the community who realizes what it is all about is C. C. Hines, operator of a general store and filling station who also serves as the village postmaster. The postoffice is just a small stall inside the general store.

Holly Ridge has no electric lights. Mr. Hines' store on Saturday and Sunday nights when I was there was illuminated by gasoline lanterns, the same kind you folks here on the coast use when you go floundering. The store, hardly See HOLLY RIDGE Page 8

New Industries Are Opened Along Road

Four new industries have been located during the past year or so along the Atlantic and East Carolina Railway company tracks, it is reported by Harry P. Edwards, railroad president, who was instrumental in getting them locations near his road.

The four concerns are the Hatteras Oil company at Morehead City; the Malard Lumber company at Kinston; the Cash Coal company at Goldsboro, and the Colonial Ice company at Kinston.

Mr. Edwards expects these companies to add considerable traffic for the railroad, and thus materially increase its earnings. The Hatteras Oil company has already given the road more than 225 carloads of freight for which over \$10,000 was paid in freight charges, he reports.

TIDE TABLE

Information as to the tide at Beaufort is given in this column. The figures are approximately correct and are based on tables furnished by the U. S. Geodetic Survey. Some allowances must be made for variations in the wind and also with respect to the locality, that is whether near the inlet or at the head of the estuaries.

Friday, Dec. 20	
11:44 A. M.	5:52 A. M.
11:38 P. M.	6:30 P. M.
Saturday, Dec. 21	
12:37 A. M.	6:56 A. M.
12:52 P. M.	7:28 P. M.
Sunday, Dec. 22	
1:37 A. M.	8:03 A. M.
1:52 P. M.	8:27 P. M.
Monday, Dec. 23	
2:42 A. M.	9:09 A. M.
2:59 P. M.	9:26 P. M.
Tuesday, Dec. 24	
3:51 A. M.	10:14 A. M.
4:06 P. M.	10:24 P. M.
Wednesday, Dec. 25	
4:54 A. M.	
5:09 P. M.	11:16 P. M.
Thursday, Dec. 26	
5:51 A. M.	11:22 A. M.
6:06 P. M.	12:15 P. M.