

INCOME TAX

Questions And Answers For This Newspaper's Readers From U. S. Treasury Department

WHO MUST FILE A RETURN? Every single person having a gross income of \$750 or more; every married person, not living with husband or wife, and having a gross income of \$750 or more; and married persons living with husband or wife, who have an aggregate gross income of \$1,500 or more.

WHEN MUST RETURNS BE FILED? For the calendar year 1941, on or before March 16, 1942. For the fiscal year, on or before the 15th day of the third month following the close of the fiscal year.

WHERE AND WITH WHOM MUST INCOME TAX RETURNS BE FILED? In the internal revenue district in which the person lives or has his chief place of business, and with the collector of internal revenue.

HOW DOES ONE MAKE OUT HIS INCOME TAX RETURN? By following the detailed instructions given on the income tax blanks, Form 1040 and Form 1040A (optional simplified form).

WHAT IS THE TAX RATE? A normal tax of 4 percent on the amount of the net income in excess of the allowable credits against net income (personal exemption, credits for dependents, interest on obligations of the United States and its instruments and earned income credit) in the computation of the normal tax net income; and a graduated surtax on the amount of net income in excess of the allowable credits (personal exemption and credit for dependents) against net income in the computation of the surtax net income.

Everyone Must Have Forms

Forms for filing returns of income for 1941 have been sent to persons who filed returns last year. Failure to receive a form, however, does not relieve a taxpayer of his obligation to file his return and pay the tax on time—on or before March 16 if the return is made on the calendar-year basis, as is the case with most individuals.

Forms may be obtained upon request, written or personal, from the offices of collectors and from deputy collectors of internal revenue in the larger cities and towns.

A person should file his return on Form 1040, unless his gross income for 1941 does not exceed \$3,000 and consists wholly of salary, wages, or other compensation for personal services, dividends, interest, rent, annuities, or royalties, in which event he may elect to file it on Form 1040, a simplified form on which the tax may be readily ascertained by reference to a table contained in the form.

The return must be filed with the collector of internal revenue for the district in which the taxpayer has his legal residence or principal place of business on or before midnight of March 16, 1942. The tax may be paid in full at the time of filing the return or in four equal installments, due on or before March 16, June 15, September 15, and December 15.

In making out your income tax return read carefully the instructions that accompany the form. If you need more information, it may be obtained at the office of the collector of internal revenue, deputy collector, or an internal revenue agent in charge.

Remember that single persons or married persons not living with husband or wife, who earn as much as \$14.43 a week for the 52 weeks of the year, and married persons living together who have aggregate earnings of as much as \$28.85 a week for the year, are required to file returns.

Geese Flew High At Mattamuskeet

RALEIGH, Jan. 7.—Low water and mild weather generally prevailing severely affected hunting at Lake Mattamuskeet, famed as one of the best goose-shooting spots in America, Special Protector Oscar Chadwick of the State Department of Conservation and Development reported.

In 4,695 man-hunting days during the two-months migratory wild fowl season which closed on December 31, 4,187 geese and 1,528 ducks were killed at Mattamuskeet and surrounding territory in Hyde County, Chadwick reported.

Decoys Hit By Priorities

RALEIGH, Jan. 7.—Mark up on your list of unexpected items hit by priorities: decoys. Makers of life-like geese and ducks that attract wildfowl to Eastern North Carolina blinds had so much trouble getting balsam wood and copper wire that their output was reduced nearly three-fourths this season.

STRAIGHT FROM NEW YORK



EVENING GLITTER

Here's that "glitter" so smart for formal evening dresses for gala occasions, high points of the holiday season. Often the bodice, or bodice and peplum, are a mass of gleaming sequins, while the skirt is in plain fabric. Or the entire dress may be sprinkled over with sequins, as in this New York creation made of gold taffeta. Here the glitter follows a delicate spider-web design, spreads all over the bouffant skirt and tight fitting, low-cut bodice.

Defense Program Putting Greater Burden On Welfare

By MRS. W. T. BOST
State Welfare Commissioner

The close of 1941 has placed upon organized public welfare service a greater responsibility than it has ever faced before. Only a little more than a year ago public welfare agencies were concerned primarily with building economic and social security for the less fortunate portion of our population. Now those same agencies are faced with the huge task of coordinating the social security programs with the nation's war effort to make certain America's total defense against an all-out war.

That the maintenance of both home security and military security will be continued at the highest possible levels has been shown in recent Washington announcements that the government is planning adoption of a war risk insurance plan similar to that protecting British homes destroyed by conflict.

Our soldiers and sailors in action are already aware of legal provisions safeguarding their return to their old jobs after their period of service. The people of North Carolina and of the nation have heard the voice of the president tell them that the social gains of the past few years will not be lost in the country's concentration upon production of the material of war.

North Carolina's general welfare program has been more or less concurrent with wars. Following the Civil War, the newly adopted Constitution of 1868 made mandatory upon the legislature

Quail Hunting Good In North Carolina

Bluebird weather disappeared in North Carolina with the closing of the migratory wildfowl season. With another month of the upland hunting season, State Game Commissioner Hinton J. James is getting nothing but the "best reports" from game protectors on the number of quail in the fields. James admits that he wouldn't be surprised if "bobwhite" shooting this month were the best in years.

Super Battery Charge In 30 Minutes

Get Your Battery Charged As You Wait — At Our Station

WE CARRY A FULL LINE OF

Oil Filters, Automobile Batteries, Battery Cables, and Anti-Freeze

By National Carbon Co., Maker of Prestone

Circle Service Station

— TEXACO PRODUCTS —

Edward Willis, Mgr. — Beaufort, N.C.

the establishment of a State Board of Public Charities. At about the time of America's entry into World War I, the State's welfare plan was reorganized and broadened, and after the close of that conflict welfare services were established in all counties of North Carolina on either a full or a part-time basis.

Now again we are fighting for survival of the American way of life. North Carolina has contributed much to that way in the year now closing. About 39,300 needy people each month receive \$4,618,216 in federal, state and local funds to supplement their regular income in order to provide a more decent standard of living.

An average of 23,300 dependent children were enabled to stay in their own homes or with relatives by the expenditure of \$1,983,681 in their interest.

The total 1941 public assistance payments from federal, state and county funds amounted to \$6,601,110 spent for needy aged and dependent children in 1940.

This after four and a half years of operation North Carolina's public assistance aid has grown from little or nothing to a sum sufficient to care in part for 67,600 unfortunate citizens a month and this does not include aid to the blind administered by the State Blind Commission.

At the end of the year 18 special workers interested in children were employed in North Carolina, and 34 counties made use of consultative services of trained workers in handling their child welfare problems. Counties and the federal government combined rose to meet the \$53,480 necessary for this type of work.

Since the first of the year the State Welfare Department has supervised selection of 10,278 youths for Civilian Conservation Corps. This record number of selectees returned their relatives allotments of \$1,099,880; retained \$591,888 for their own immediate use and deposited to their credit \$497,944 to be used upon leaving the service. An average of 6,168 boys a month were in 33 camps operating in the state.

Free lunches have been given 108,914 needy, undernourished graded school pupils once a day in 1,437 public schools. Thus there is assured to this many of North Carolina's future citizens a stronger, healthier body for their adulthood.

This phase of the commodity distribution program has been

stressed even more strongly in 1941 than it was last year. December 1941 showed 2,795 schools feeding 208,939 children as compared with 528 schools aiding 119,348 children in December 1940.

The department distributed a total of 48,200,854 pounds of surplus commodities worth a retail price of \$2,654,056 to needy families and to institutions and agencies. Not included in this total is the 17,345,292 pounds valued at \$1,245,503 sent to school lunch rooms.

A year ago 39,283,650 pounds of food worth \$2,187,047 was given to 198,042 persons in 42,303 families. At the close of 1941 there were 174,155 persons in 39,460 families receiving these additional food supplies.

Initial tests in establishing a merit system for all state and county welfare employees were completed near the end of 1941 with supplementary examinations scheduled shortly after the opening of the new year. The plan will henceforth give a tenure of office to employees, provide for uniform standards, salaries and progressive advancement.

The department's division of institutions and corrections cooperated with the Osborne Association in making a survey of the State's training schools for delinquents and with other state and national agencies in the movement to establish classification and service centers for delinquents picked up in North Carolina defense areas.

Inspection and licensing of boarding homes, child placing agencies, recording of adopting, inspection of state hospitals for the insane and establishment of mental hygiene clinics has been continued as a very important part

of the regular work of the department.

Work among Negroes resulted in the largest Negro attendance yet at the Public Welfare Institute and other activities for the betterment of existing conditions for this portion of the population were continued.

County departments found their work increased through calls from local selective service boards to determine dependency of draftees seeking deferment, but this work was handled satisfactorily along with the regular activities. The excellent cooperation between the Welfare Department and the State Selective Service Commission has been an important factor in promoting the efficiency of the service. The impact of the various defense programs upon the state public welfare department has multiplied social problems in connection with transience, family, social protection, dislocation of workers, and additional personnel have been placed on local staffs in defense areas. The welfare department is represented on state and local defense councils and is coordinating its efforts wherever needed with other defense agencies.

Thus far priority unemployment, it is estimated, has been offset by the development of new work opportunities in connection with the various defense programs and calls for work referral services have not been so numerous as in former years.

By reason of the inadequacy of county general relief funds, North Carolina is one of the 11 remaining states that make no state appropriation for general relief. There are large numbers of people not eligible for categorical assistance and unable to work whose

needs are not being met.

North Carolina is among the low income states, the Census Bureau figures of 1939 indicating that the average per capita economic income is \$312 as compared with the national average of \$541. It stands forty-first in the scale.

An equal chance or a reasonably equal chance is what should be given the needy aged, the blind, and dependent children and other economically underprivileged

groups. This can only be brought about by Federal assistance grants to the states on a variable basis, conditioned upon the states' ability to pay.

All in all, the year has been most productive in that the State Board has been able to be of service to many more North Carolinians than ever before, and present indications are that a still greater number will be touched in the coming year.

NOTICE

According to law, I must advertise all unpaid executions now in my possession against property on which delinquent taxes are due for the years 1937 and 1938, by order of Superior Court.

This Sale will be different from previous Sales conducted by Carteret County. The sheriff will be forced to put buyer in possession and original owner out of possession. So in order to save your property from being sold—

PAY YOUR 1937 - 1938 CARTERET COUNTY TAXES IMMEDIATELY

Sheriff C. G. HOLLAND

Carteret County

LIST YOUR CARTERET COUNTY TAXES NOW — 10 PERCENT PENALTY FOR FAILURE TO LIST DURING JANUARY

EASTMAN'S FURNITURE CO. BEAUFORT, N. C.

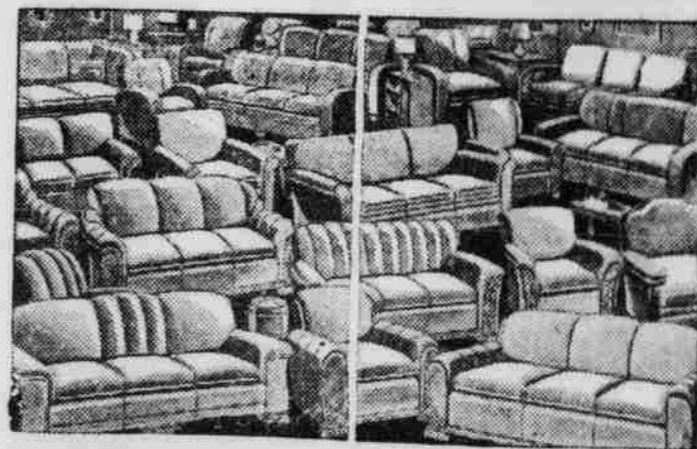
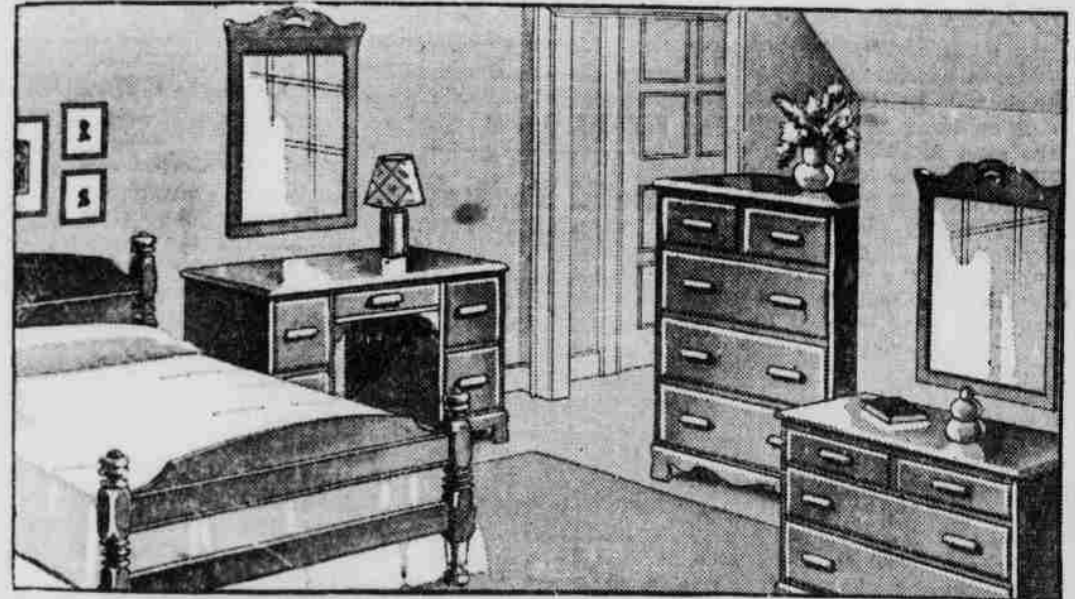
IT IS EASY TO BUY FURNITURE AT OUR STORE

Bed Room Suite Of Maple

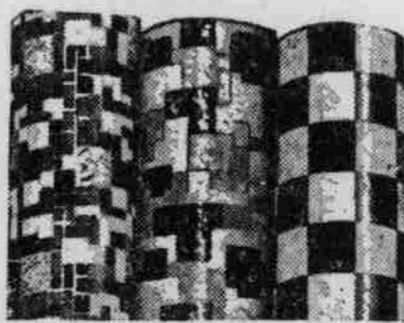
4-Pc. As Illustrated

\$69.50

FREE! DURING THIS SALE Set Of Boudoir Lamps With Each Bedroom Suite



LIVINGROOM SUITS AND FURNITURE FROM \$79.50 UP ODD PIECES OF FURNITURE FOR EVERY PURSE



GOLD SEAL CONGOLEUM (Nationally Advertised)

SERVICE BOND Linoleums

Many Sizes and Patterns To Choose From

BUY on our easy BUDGET PLAN

Eastman BEAUFORT

Fleecy and Warm BLANKETS



Wool and Part - Wool Fabrics

NOW IS THE TIME TO BUY BLANKETS \$1.95 up

CUSTOMADE RUGS From the Looms of Mohawk Patterned To Please You

Eastman Furniture Co. NORTH CAROLINA