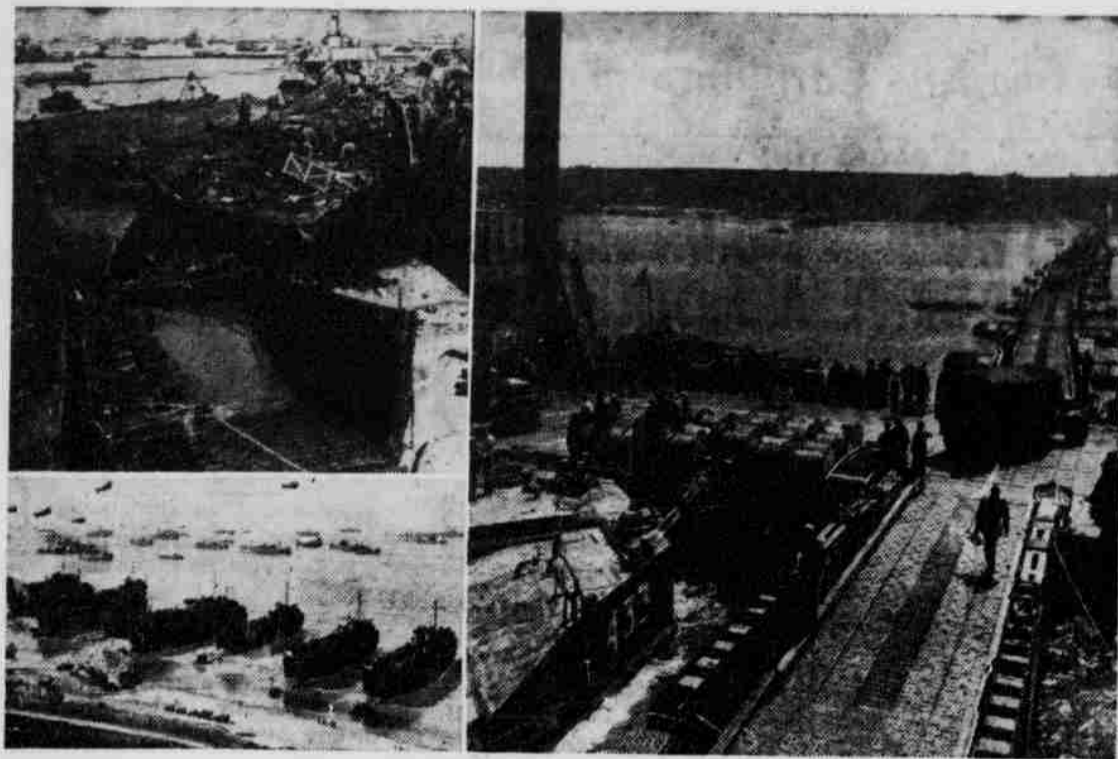


Floating Invasion Docks Destroyed by Storm



Lower left shows panoramic view of Omaha beach before the U. S. Mulberry invasion docks were set up. Right shows how all hands pitch in to keep the flow of supplies going in the U. S. Mulberry off Colleville, France. The Mulberry (top, left), shown wrecked by the terrific channel storm which broke directly after completion of the Mulberry.

Commanded U. S. Navy Units in Biggest Victory



These are the three men who were in charge of the United States fleets that battled the Japanese, with such disastrous consequences to the Nipponese. Shown left to right are Rear Adm. Russell S. Berkey, U.S.N., Rear Adm. G. L. Weyler, U.S.N., and Rear Adm. Robert Ward Hayler, U.S.N. Latest tally indicates that 58 Japanese ships were destroyed, seriously damaged and hit, with a United States loss of six ships sunk. The loss in Japanese lives was believed to have been the greatest in history.

Salt Water Sailor on Leave



Back to the sea goes this sailor, visiting Manhattan during shore leave. He spends his time ashore watching a miniature sailboat race in the Central park pond, in New York city. Among the sea-going men, the miniature boats in the pond prove one of the biggest drawing cards for Uncle Sam's tars when visiting the city. Many of the boats entered in races are sailor-owned.

They Return to Philippines



Left: Gen. Douglas MacArthur as he broadcasts to the Philippines that the Americans landed on Leyte island and that he has returned. Right: Vice Adm. Thomas Kinkaid (right), and Lieut. Gen. Walter Krueger (center), as they discuss Philippine invasion operations aboard the flagship in Philippine waters.

Returns to Islands



Sergio Osmeña, new president of the Philippines, embarks at New Guinea for return to his native land. He has moved the Philippine government from Washington, D. C., to the islands, following their recapture by General MacArthur's troops.

India-Burma Chief



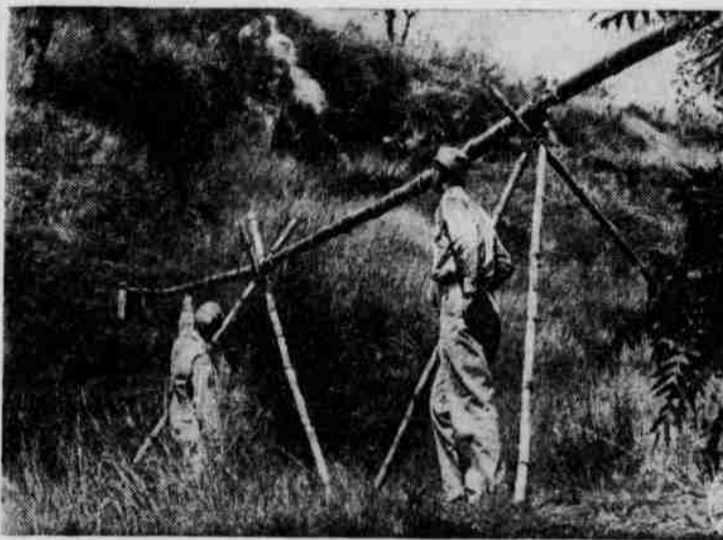
Lieut. Gen. Daniel I. Sultan has been selected to relieve Gen. Joseph Stilwell as commander of all U. S. forces in the India-Burma theater of operations.

Aviation Conference Underway



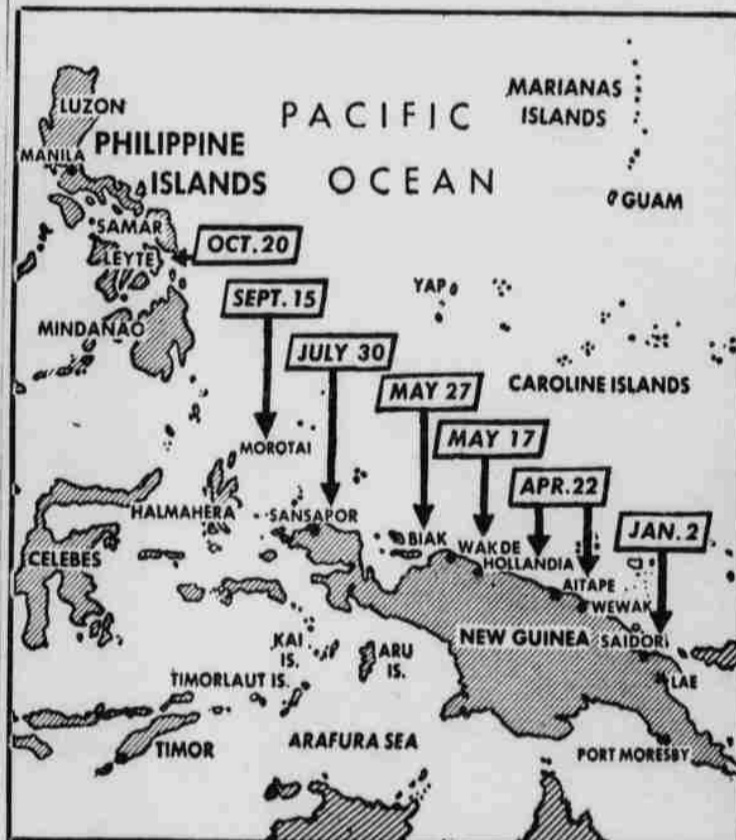
Adolph Berle, assistant secretary of state, and temporary chairman, is shown as he made the opening address of the International Civil Aviation conference held in Chicago. Delegates representing 50 countries met in first conference of its kind, hoping to work out a plan for world air transportation. The conference has dedicated itself to world-wide peacetime aviation development.

GIs Build Bamboo Water Line



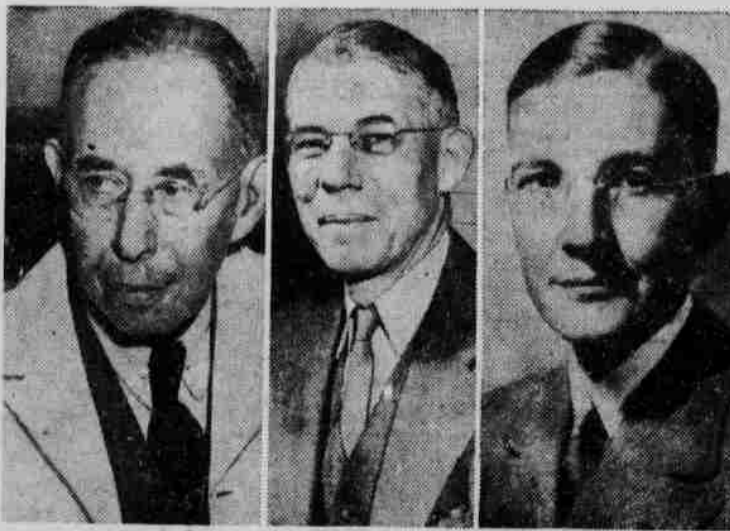
Bamboo water line is supported across a defile by trestle also made of bamboo. This improvised line, in Yunnan province of China, the end of the lines for American army supplies, released hundreds of Chinese coolies from carrying water in order that they could handle other essential war supplies for American and Chinese forces.

Gain by Gain Toward Victory



This map shows the steps taken by Gen. Douglas MacArthur as he kept his vow to return to the Philippines. On the second day of January, 1944, he made his first major leap-frog jump along the coast of New Guinea from Lae to Saidor. The map shows the succeeding operations, climaxing in the invasion of the Philippines.

Awarded Nobel Medicine Prizes



All 1944 Nobel prizes for medicine went to the United States, the Nobel committee has announced. Dr. Joseph Erlanger, St. Louis, Mo., (left); Dr. Edward A. Doisy, St. Louis, Mo., (center); and Dr. Herbert I. Gasser, of the Rockefeller Institute, New York city, were awarded the prizes for medical research work.

Guest of Air Force



Hot dogs and raisin pie were served to this French lad by members of the U. S. army Ninth air force service command unit in France. Mess call always finds a number of the French children lined up for chow with the GIs. Thousands of French children have to be fed.

Commands Invasion



Maj. Gen. James L. Bradley, commanding general of the 96th infantry division, leads his division in the invasion of Philippines. The troops received extensive training for the present campaign in the Hawaiian islands.

Crossing the Alps



Typical of the terrain over which our forces must battle in northern Italy is this jagged pass at Della Stelvio. These are the Austrian Alps on the Italian-German border. The man-anguly white strip is the Burma pass-like road.

Waiting for Flush



Dog, Joe Contender, and his hunter, working like two halves of a well-oiled machine, stand by a covert. The dog is in a point and the hunter is ready for his shot.

CLASSIFIED DEPARTMENT

REMNANTS

QUILT PIECES: Cotton, silk, wool. Fast colors. 50¢ \$1.25. Samples 25¢. Surprise gift included. MARY BALL SHOP, Ravena, Va.

Buy War Savings Bonds

SURVEY SHOWS Many Doctors Recommend SCOTT'S!

★ HELPS BUILD STAMINA
★ HELPS BUILD ACTUAL RESISTANCE TO COLDS

Try good-tasting Scott's Emulsion! Contains natural A & D Vitamins that help bring back energy and stamina if there is dietary deficiency of these elements. Take it daily. All druggists!

Try SCOTT'S EMULSION

Great Year-Round Tonic

Mimeo & Multigraphing
14 yrs. of fine work and fair prices. Free samples and prices. B. ALLSMITH, 1500 W. Nedro Ave., Philadelphia 41, Pa.—Adv.

SNAPPY FACTS ABOUT RUBBER

Many rubber items in common use are shaped at the factories in giant extruding machines, which in general appearance and action are much like the ordinary kitchen meat grinder. Rubber, mixed with chemicals, is extruded in any shape desired—round, square, rectangular or tubular.

The critical operating temperature in a tire is about 240 degrees of its hottest point, and is reached quicker in a synthetic rubber tire than in one made of natural rubber. Speed, load and inflation are chief factors in developing tire heat, which accounts for tire users being cautioned about respecting them.

In war or peace
B.F. Goodrich
FIRST IN RUBBER

AT FIRST SIGN OF A
COLD
USE 666
Cold Preparations as directed

WOMEN IN '40's
Do You Hate HOT FLASHES?
If you suffer from hot flashes, feel weak, nervous, a bit blue at times—all due to the functional "middle-age" period peculiar to women—try Lydia E. Pinkham's Vegetable Compound to relieve such symptoms. Taken regularly—Pinkham's Compound helps build up resistance against such annoying symptoms. Pinkham's Compound is made especially for women—it helps nature and that's the kind of medicine to buy! Follow label directions.
LYDIA E. PINKHAM'S VEGETABLE COMPOUND

Watch Your Kidneys!

Help Them Cleanse the Blood of Harmful Body Waste
Your kidneys are constantly filtering waste matter from the bloodstream. But kidneys sometimes lag in their work—do not act as Nature intended—fail to remove impurities that, if retained, may poison the system and upset the whole body machinery.
Symptoms may be nagging backache, persistent headache, attacks of dizziness, getting up nights, swelling, puffiness under the eyes—a feeling of nervous anxiety and loss of pep and strength.
Other signs of kidney or bladder disorder are sometimes burning, scanty or too frequent urination.
There should be no doubt that prompt treatment is wiser than neglect. Use Doan's Pills. Doan's have been winning new friends for more than forty years. They have a nation-wide reputation. Are recommended by grateful people the country over. Ask your neighbor!

DOAN'S PILLS