

# BURLINGTON COFFIN COMPANY

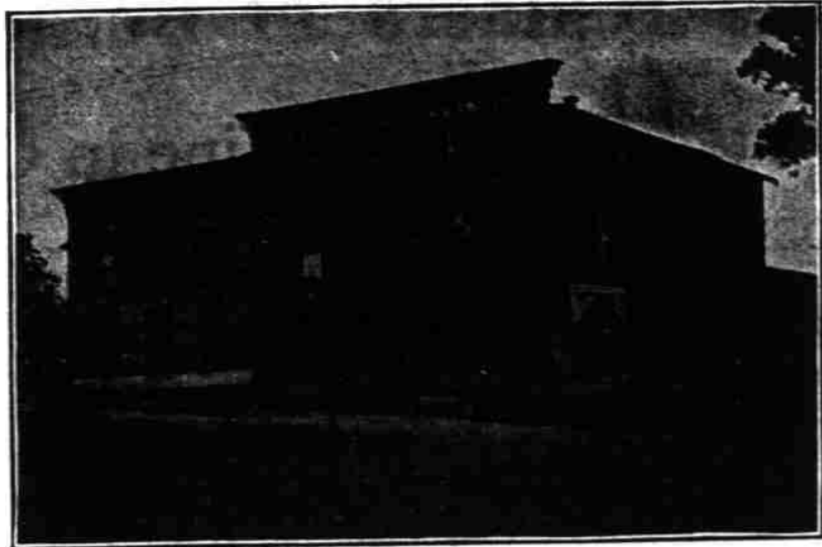
The Largest Manufacturer of Coffins in The South.

Constantly Widening its Trade Boundaries and Growing in Every Distinctive Detail.

In the progress of evolution along the lines of artistic development one of the best exemplifications is shown in the marked changes that have occurred in the manufacture of burial caskets. While it is true that this has been made largely possible by the increased wealth of our people, yet without the effort of those whose business it has been to foster, educate and encourage a keener and higher artistic sense this progress would never have reached the refinement of taste and beauty of de-

signs and specifications for the same. Mr. Davis, a member of the firm, has one through a long term of practical experience and training in the wide field of architecture and solved the complex problem of how best to utilize the minimum of space with the maximum of accommodation and beauty of design. He has pursued his profession with a conscientious regard for the excellence and perfection of every detail and has well earned the reputation attained by him, which justly accords with his recognized standing in professional circles. He has had long years of experience in building and is a skilled workman.

Messrs. Cates & Davis are prepared to furnish plans and estimates for any kind of buildings, and construct the same in a manner which will be satisfactory to the parties and creditable to themselves. They employ none but skilled laborers to assist them, knowing full well that nothing reflects so much on a man's ability as a poorly constructed house. Both in experience and ability they are well qualified to undertake and carry through to a successful issue the most important and difficult architectural enterprise. They made the plans for the handsome new Presbyterian church that is now almost complete. They are superintending the construction of the First National Bank building, which will be the largest and hand-



## Burlington Coffin Co., Office and Shipping Room.

sign as shown at the great show rooms of the Burlington Coffin Company. Go back, not more than two decades ago, we find that the yellow pine box was the proper receptacle for the dead in most communities, and the maker of the box was a local carpenter.

The manufacturer of burial receptacles have kept pace with the marvelous growth of this century and those primitive customs have given way to the rich creations of the cabinetmakers' art.

The Burlington Coffin company was incorporated in 1889 with a capital of \$14,500, and occupied a small building with a daily capacity of about ten coffins. But after twenty years of business life, passing through money panics and trade depressions, we find them housed in an imposing plant, with warehouses, show rooms and a factory covering several acres and utilizing a floor space of more than 75,000 square feet, giving employment to sixty and sixty-five skilled workmen, and turning out daily more than 100 coffins and caskets, with six salesmen, constantly traveling throughout the south and southwestern states, and supplying a trade that has almost doubled within the past two

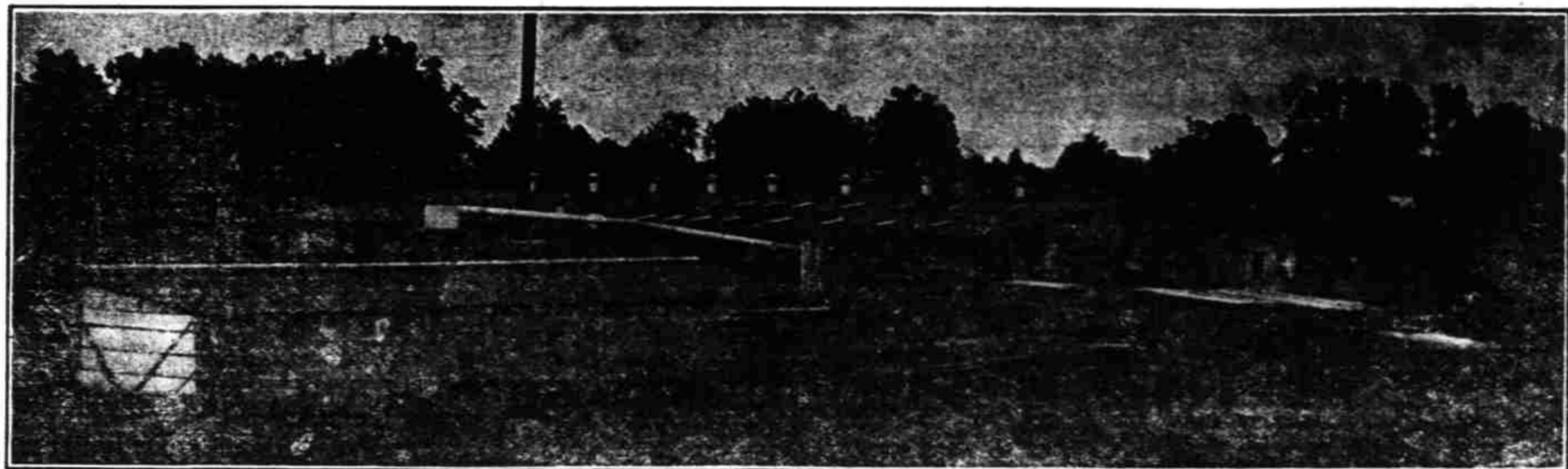
years in the city. They are also at present building several beautiful residences.

They were both born in Orange county and came here fifteen years ago. Both are church members. Mr. Cates and Mr. Davis are Knights of Pythias and Masons, and members of the Junior Order.

In our city, there are not two more thoroughly progressive, energetic, honest, reliable and upright citizens than Messrs. Claude Cates and James A. R. Davis.

## STOKES FURNITURE CO. Furniture, Furnishings, Stoves, Wood and Coal.

In gathering statistics for this review we find some firms that for straightforward, honorable business methods, energy and enterprise are entitled to special mention in these columns. Among those who come within this category is the above house, which is one of the newest and best in this section. The stock is purchased at the best man-



## Burlington Coffin Company Machinery Building.

years. The gentlemen who have guided this sterling and prosperous business along the tortuous course of commercial life are Paul C. Collins, president; J. P. Montgomery, vice-president; J. L. Scott, secretary and treasurer, and S. A. Steele superintendent. All of these are progressive and representative citizens. Our people are justly proud of the Burlington Coffin company, and give unstinted praise to these gentlemen for the enterprise and business acumen displayed in building up this large industry, giving employment to our citizens, and carrying the name and fame of Burlington throughout the country and throwing thousands and thousands of dollars into the coffers of our local merchants and property owners. We welcome more factories like the Burlington Coffin company to our growing city.

## CATES AND DAVIS. Undertakers and Contractors

Men are born to die. The "black camel" kneels at each man's door once in a life-time and, when it does, sorrowing hearts turn to the one best fitted to attend to the last sad rites of their beloved dead.

The above named firm has been established but one year, yet in that short time they have won a most enviable reputation for managing and performing the necessary duties of burial of the dead tactfully and well. They give all funeral directions and details their personal attention. They keep two hearses, and as funeral directors they are unexcelled. In this department of their business will be found a nice stock of burial cases, caskets, coffins, robes and other accessories at all prices and in all grades.

Architecture, Contracting, Building. Ever since the time when Peter and Paul angled for the finny monsters in the deep waters of the Sea of Galilee it has been considered poor architectural policy to build houses upon the sand. So it is easier for a builder to know what not to do than it is to know just what to do, and if you are looking for builders and contractors who know both you should call upon Cates & Davis. They are ready at all times to give estimates on any class of building or to prepare

factories, and will always be found as represented. It includes all the most fashionable and improved styles in bedroom and parlor sets, easy chairs, sideboards, sofas, extension and center tables, and everything carried in the largest establishments in greater cities. Besides the furniture and home furnishings, the best grades of cooking and heating stoves are kept. Wood and coal are handled also, and on all of their goods the prices are as low as possible. A splendid delivery wagon carries your goods to you as soon as they are ordered.

The house is classed among the most popular and finely appointed establishments of the kind in the town. It is well arranged for the effective display of goods, which have been carefully selected to meet the requirements of a first-class trade. The management is under the immediate supervision of the proprietor, and everything that tends to place the house on a higher plane is carefully looked after. Nothing is omitted to render the comfort of patrons more enduring.

The Stokes Furniture Company, Incorporated, was established here July 1, 1909, with a capital stock of \$3,000, by three Stokes brothers, R. L. Stokes, of Montana; J. D. Stokes, of South Carolina; and the third, W. T. Stokes, Jr., of this city, who is the secretary and general manager. They located at first on Webb avenue, in East Burlington, but outgrowing their small quarters, they moved their stock uptown and now have one of the best locations in the city, on Front street.

Mr. Stokes is a member of the Christian church, and belongs to the Odd Fellows, Masonic order and Junior Order. He is one of our leading citizens, and is a man prominently identified with every material interest of the people. Their store and stock of new goods are worthy the growing importance of Burlington.

We welcome the stranger, invite the homeseeker and insure the capitalist that money invested in Real Estate in this section will double in the short space of two years.

county's safest, best and most promising young physicians. Messrs. Cheek and Cates came to Burlington two years ago from our sister county, Orange. They are both courteous, affable, sterling young men, and have quickly become two of our best citizens.

## E. L. BOLAND. Dry Goods, Shoes, Notions.

The dealer in a number of lines of merchandise must be a man of marked ability to attain anything like success, as it is probably the most difficult branch of merchandise to carry on. No other branch of business requires greater talent or closer application than is necessary to the successful dealer in merchandise. One who has made a success of it, however, is Mr. E. L. Boland, who has been in business here the past several years. January 15 of this year, he became sole owner and proprietor of the stock of goods and store of Boland & Hornaday, which had done a flourishing business on Davis street for three years. Prior to that time Mr. Boland had been a traveling salesman for a grocery firm in Richmond, and a store keeper in the United States revenue service.

His wide and varied experience and travels have given him a knowledge of humanity and he is able to cater successfully to the wishes of people. He has a splendid location, a large, well-lighted and well-ventilated store, and everything is neat and well arranged. He keeps a complete line of shoes for men, women and children, ladies' ready-made suits, dress goods of every variety and texture, and a complete line of notions. His goods are new, good and up-to-date, and his prices are right.

Mr. Boland is a native of this county, and knowing "there's no place like home," he does what he can for the advancement of his town and county by conducting his business on square, honest lines, and making of himself a worthy citizen.

Now is the time to renew or subscribe to the Dispatch.



## Burlington Coffin Company Finishing Room.

## BURLINGTON DRUG CO. Drug, Toilet Articles, Cigars. One of the Handsomest Soda Fountains in the State.

"Competition is the life of trade" has been maintained through the ages and is quite as true today; and the most prosperous cities of our land and you will find that the more stores there are in its midst of a given kind, the more business and prosperity there are in that one line. It acts as a tonic on the system of the proprietors of old established houses to have new stores to compete with them in prices, quality and accommodations. It subserves the interest of the patrons as well, as it controls the prices and worth of the goods they buy. Merchants in all lines know that this is an ever-changing world and humanity, even though not fickle, will certainly patronize the men who afford them not only the best goods for the least money, but the most generous and accommodating treatment.

The inauguration of the above drug store, established but two years ago, is another proof that Burlington is not "resting arms" in the great and steady march of progress and prosperity.

Their line embraces everything found in a first-class drug store, including drugs, proprietary medicines, an immense and complete assortment of fancy toilet articles, tobaccos and cigars, stationery, and a handsome soda fountain, from which cool, delicious, pure drinks are dispensed at all hours by courteous clerks. The prescription department is a special feature and is in the hands of Mr. C. H. Cates, a registered pharmacist, with a reputation for prompt, careful and accurate work.

The Burlington Drug Company was incorporated two years ago with the following officers: Dr. H. R. Moore, president; Mr. J. B. Cheek, vice-president; and Mr. C. H. Cates, secretary and manager. They have a splendid location on Main street. They started out with the intention of giving the best that money could buy, being satisfied with living profit. The wisdom of such a course has been verified, as is shown by the large trade they enjoy.

Dr. Moore, a native of North Carolina, has been, for fifteen years, a resident of Burlington. He is one of the

## M. B. SMITH Furniture and House Furnishings Located in The New Isley Building.

A comparatively recent and valuable acquisition to the retail interests, and an enterprise whose stock equipment increases and improves the buying opportunities of housekeepers in their needs for furniture and floor coverings, may be cited in the establishment which M. B. Smith owns and conducts. This concern is located in the handsome new Isley building, where it occupies two floors, measuring 50x75; also the second floor of the same size, or in other words, a floor space of 15,000 square feet. Throughout these floors one can find collections of the very latest designs and styles of furniture.



M. B. Smith.

stock is all fresh and new, having been received but a short time since from the warehouses and factories of some of the leading manufacturers of the country.

The lines comprise a wide range in both price and quality of from medium to high grade goods, and include everything in furniture and floor coverings for the home in parlor and bedroom

stock of furniture and business from Welborn & Airheart, and moved it to his present location last January, where he has since been supplying the needs of many of our best families in both country and town, and the goods already sold and delivered will be the most effective trade builders.

With its splendid facilities and reliable methods the store of M. B. Smith cannot but grow in popular favor and build up a large and select patronage from among the people of this section.

Mr. Smith was born in Rockingham county, and was engaged in the manufacture of furniture at High Point, N. C., until he located in Burlington. During his brief residence here he has made many friends and patrons and is recognized as one of our progressive citizens and up-to-date merchants.

## J. M. TISDALE.

### Staple and Fancy Grocer.

The grocery trade in the city fills a large place in its commercial transactions, and among its representatives, no house bears a better reputation for square dealings and reliable goods than the establishment owned and conducted by Mr. J. M. Tisdale.

Mr. Tisdale came and pitched his tent with us in 1895, establishing a general merchandise business which gave way to an exclusive grocery store, such as he saw the town stood in great need of. For the past ten years he has supplied a large trade with eatables, and is still at the front and far in advance of many of his competitors. Our space will not permit us to give a list of the multifarious assortment of articles in which he deals, and we merely say that it is hard to find a more judicious selection of food products, delicacies and household articles than this establishment can display. By selling goods at reasonable prices, being ever on the alert for fresh goods, and consequently supplying a large trade, you are always sure of finding what you want, good and fresh, at his store. He is located on Main street, in a handsome 90x25 store, well lighted and ventilated.

Mr. Tisdale is a genial, honorable and liberal gentleman, who deserves your patronage and the prosperity he enjoys. He is Past Master of the Masonic fraternity and stands high in the good graces of this noble cause. He is a deacon in the Baptist church, a thorough church man, and carries his principles into his business with him, insuring you a square deal when you have dealings with him. He is a thorough believer in the possibilities of Burlington, and what may be accomplished by industry, honesty and fair dealing with the public.

## T. H. STROUD.

### Prescription Druggist.

One cannot be too careful in getting prescriptions filled by a reliable druggist, who carries a complete stock and thoroughly understands pharmaceutical science. Mr. T. H. Stroud, the proprietor, graduated in pharmacy many years ago, and his many years of practical work make him one of the safest druggists in the state.

The drug store is located on Main street, and has been established nineteen years. It is fitted in that neat and attractive style so characteristic of the modern drug store, and the diversified stock carried is complete throughout. It comprises all that pertains to this branch of the business, drugs and chemicals, in all the multifarious combinations, supplemented with a nicely selected stock of ornamental goods, including fancy and toilet articles, perfumes, cigars, stationery and every variety of farm and garden seeds.

In the prescription department care and accuracy are essential in all compoundings requiring the purest ingredients of correct proportions as prescribed.

A soda fountain forms a splendid ornament to its interior decoration where all kinds of soft drinks are served, delicious and cool, in a tempting manner by courteous attendants.

Mr. Stroud is a native of North Carolina, a resident of Burlington for twenty years. He has witnessed the growth of our city from a mere village to its present importance as a city, and has in many ways assisted in its upbuilding. He is as much in love with the city as he ever was and continues to add his weight to every laudable undertaking in its behalf. He is a gentleman of high standing in the community, and a living exponent of the maxim, Merit will win.

This Edition is one of the most comprehensive Industrial Editions ever issued in the State. It should be preserved as a souvenir of Burlington.

# HOLT & MAY

Alamance County's Leading Hardware Dealers.

Without disparagement to any others it is but fair to say that the above gentlemen are the leading hardware and farm implement dealers in Alamance county. They have been in the business eighteen years and are one of the oldest firms in the county and town. It behooves us, therefore, to give them prominence of mention among the representative business firms of Burlington. The firm is composed of Messrs. W. K. Holt and W. A. May, both natives of the county, and two of the leading men of 1891, but is entirely in Mr. Holt's hands, as Mr. May is now a resident of Virginia. They sell all of the leading implements which are used in this section of the country, and farmers from miles around come here to buy from their farming implements of all kinds; high grade vehicles, buggies, carriages, wagons, etc.; hardware of all kinds, paints, lime and cement; in fact, everything that is handled in an up-to-date hardware and implement store. Among their special lines we would mention Hackney Bros. buggies and carriages, Tyson & Jones Buggy company's buggies, phaetons, surries, etc., 275 of which they have sold this year; Buck Eye drills and cultivators, three car loads of which they have bought this season, and others just as good.

The mammoth stores of Holt & May have more floor space than any store in the county, in all about 21,500 square feet. They have two large two-story stores on Main street, one of which extends through the entire block, giving a two-story store on North street, and two two-story stores on Davis street, making, all told, five two-story stores with five entrances on three streets. Being a thoroughly representative establishment in the business, it controls a large share of the surrounding patronage, and is one which we do not hesitate to recommend to the careful consideration of our readers, assuring them that in every respect, they will find it competent to supply anything in this line, and to be able to meet all competition, thus practically proving that it is entitled to the high position held, for reasons which must be obvious to every thinking man.

Mr. Holt, the manager, is one of the town's leading men. He is one of the stewards in the Christian church; a member of the county board of education; president of the Alamance Insurance and Real Estate company, and director of the Alamance Loan and Trust company. He is very influential in social, financial and church circles and is always active in promoting the interests of the city. His elegant residence on Webb avenue is an ornament to the city. He is a gentleman generally respected for his many good qualities as a man and a citizen.

## A. C. MITCHELL.

### A Prominent Contractor and Builder.

No man in Burlington has pushed more rapidly to the front rank of our city's enterprising business men during the past two decades than A. C. Mitchell, the contractor and builder, whose name will go down to posterity as contributing as much to the architectural beauty of Burlington as any other man.

Some of the handsomest residences of the city bear the stamp of his workmanship, and many of the business buildings and churches of the town were constructed by this enterprising builder. He gives employment to nearly fifty skilled workmen, and has the happy characteristic of easy control of his men, commanding their respect and obedience. Besides the buildings he has constructed here, he has a state-wide reputation, and many handsome buildings of other towns are standing testimonials of his skill.

With a kind word for his competitors he always maintains a friendly relation with them. Mr. Mitchell is a native of Alamance county, and has spent all of his life here helping us to make our town a city beautiful.

He is prepared to furnish plans and designs at any time and carry through the most important public or private architectural enterprise. He is now engaged in building the Presbyterian church, which will be one of the handsomest structures of the Piedmont section.

Mr. Mitchell has taken his son, Frank, in partnership with him and the firm will hereafter be known as A. C. Mitchell & Son. Mr. Frank Mitchell is a young man of excellent business qualifications and mechanical aptitude, and is his father's right hand man in looking after the interests of their large building contracts.

