

POPULATION OF NORTH CAROLINA

Detailed Figured Announced by Census Director Durand.

1910 AND 1900 COMPARED

Gains and Losses Shown in a Decade by the Various Cities, Towns, Villages and Townships Throughout the State—Total Population is 2,206,287, as Against 1,983,810 Ten Years Ago.

North Carolina's position in the front ranks of the southern states in regards to population has been greatly strengthened during the decade from 1900 to 1910.

Detailed population statistics of the state has just been issued by Census Director E. Dana Durand at Washington. They give the figures for every minor civil division and incorporate...

The total population of the state is 2,206,287 for 1910, as against 1,983,810 in 1900, an increase of 302,477.

Unlike some of the northern and middle western states, the movement from the farming districts to the cities is not nearly as pronounced in this state.

The cities almost without exception show decided increases, in some instances as high as 100 per cent. Charlotte, with a population of 11,557 in 1890 and 18,091 in 1900, is returned...

Population statistics table for Asheville, Asheville County, Beaufort County, Bertie County, Bladen County, Brunswick County, Buncombe County, and Alexander County.

Population statistics table for Caldwell County, Camden County, Carteret County, Caswell County, Chatham County, Cherokee County, Chowan County, Cleveland County, and Columbus County.

Population statistics table for Currituck County, Dare County, Davidson County, Duplin County, and Wayne County.

A POLITICAL BLACKHAND. A Tammanyite Treated to Kill Democratic Member of New York Legislature if He Refused to Vote for Senatorial Candidate. The following story which has appeared in several of the daily papers has created a sensation among New York politicians...

Norfolk-Southern Railroad. Travel via Raleigh (Union Station) and Norfolk Southern Railroad, and From All Points in Eastern North Carolina. Schedule in Effect January 1900.

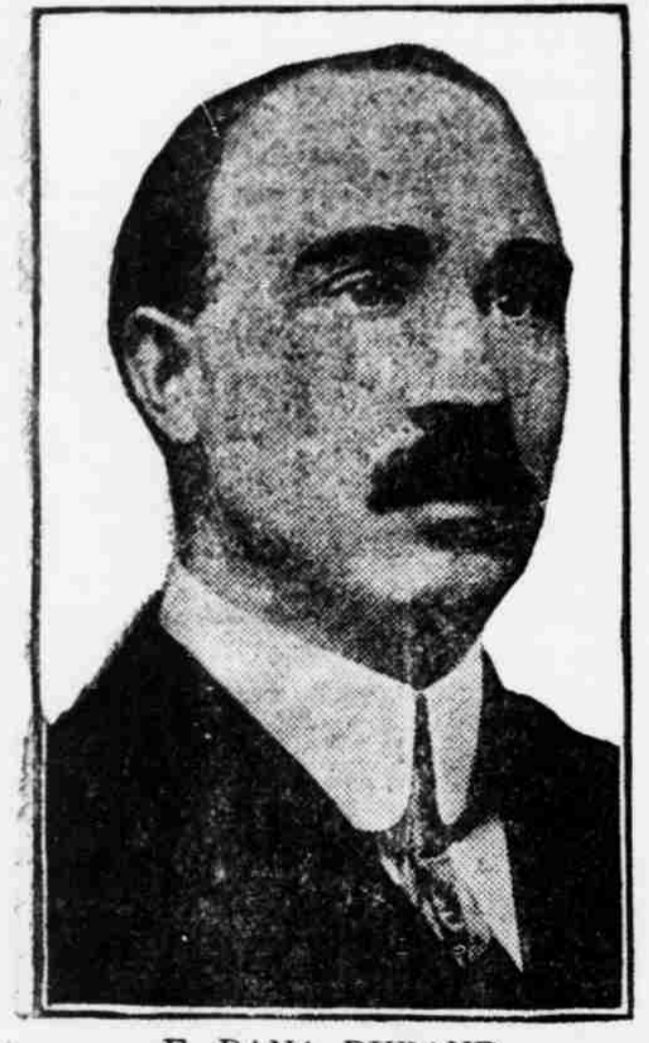
Raleigh Savings Bank AND TRUST COMPANY. Capital and Surplus, \$ 80,000. Deposits, \$ 700,000. 4% Paid on Deposits. Interest Compounded Quarterly.

Farm For Sale. A fine tobacco farm and good residence, located on public cross roads 65 acres land, large dwelling, barn stables and buggy house. Nice stone house located 3 miles from Wilson on Durham & Southern road.

SEABOARD AIR-LINE. Schedule Effective April 9, 1901. Trains Leave Raleigh. Direct line with Double Daily service to West through Atlanta, Birmingham and Memphis.

Raleigh & Southport Ry. Co. TIME TABLE. SOUTHBOUND DAILY. STATIONS. Lv Raleigh, Lv Cape Fear, Lv Lenoir, Lv Kipling, Lv Fayetteville.

NORTHBOUND DAILY. STATIONS. Lv Fayetteville, Lv Kipling, Lv Cape Fear, Lv Lenoir, Lv Raleigh. Trains will stop on signal to receive and discharge passengers at following points...



E. DANA DURAND.

with 34,014 in 1910, an increase in ten years of 5923. Wilmington had 20,976 in 1900 and now has 25,748, while Raleigh shows an increase of approximately 50 per cent, having 19,218 in 1910, as compared with 13,643 in 1900.

Asheville is another city that prospered, having a population of 18,762, as against 14,694 ten years ago.

Durham, with 6579 people in 1900, is returned with 18,241 in 1910, an increase of nearly 200 per cent.

The census returns indicate that North Carolina is forging to the front as a manufacturing and mercantile state, while it is losing little as an agricultural state.

The detailed population by counties is as follows:

Population statistics table for Alamance County, Alleghany County, Anson County, and Cabarrus County.

with 34,014 in 1910, an increase in ten years of 5923. Wilmington had 20,976 in 1900 and now has 25,748, while Raleigh shows an increase of approximately 50 per cent...

Durham, with 6579 people in 1900, is returned with 18,241 in 1910, an increase of nearly 200 per cent.

The census returns indicate that North Carolina is forging to the front as a manufacturing and mercantile state, while it is losing little as an agricultural state.

The detailed population by counties is as follows:

Population statistics table for Alamance County, Alleghany County, Anson County, and Cabarrus County.

with 34,014 in 1910, an increase in ten years of 5923. Wilmington had 20,976 in 1900 and now has 25,748, while Raleigh shows an increase of approximately 50 per cent...

Durham, with 6579 people in 1900, is returned with 18,241 in 1910, an increase of nearly 200 per cent.

The census returns indicate that North Carolina is forging to the front as a manufacturing and mercantile state, while it is losing little as an agricultural state.

The detailed population by counties is as follows:

Population statistics table for Alamance County, Alleghany County, Anson County, and Cabarrus County.

with 34,014 in 1910, an increase in ten years of 5923. Wilmington had 20,976 in 1900 and now has 25,748, while Raleigh shows an increase of approximately 50 per cent...

Durham, with 6579 people in 1900, is returned with 18,241 in 1910, an increase of nearly 200 per cent.

The census returns indicate that North Carolina is forging to the front as a manufacturing and mercantile state, while it is losing little as an agricultural state.

The detailed population by counties is as follows:

Population statistics table for Alamance County, Alleghany County, Anson County, and Cabarrus County.

with 34,014 in 1910, an increase in ten years of 5923. Wilmington had 20,976 in 1900 and now has 25,748, while Raleigh shows an increase of approximately 50 per cent...

Durham, with 6579 people in 1900, is returned with 18,241 in 1910, an increase of nearly 200 per cent.

The census returns indicate that North Carolina is forging to the front as a manufacturing and mercantile state, while it is losing little as an agricultural state.

The detailed population by counties is as follows:

Population statistics table for Alamance County, Alleghany County, Anson County, and Cabarrus County.

with 34,014 in 1910, an increase in ten years of 5923. Wilmington had 20,976 in 1900 and now has 25,748, while Raleigh shows an increase of approximately 50 per cent...

Durham, with 6579 people in 1900, is returned with 18,241 in 1910, an increase of nearly 200 per cent.

The census returns indicate that North Carolina is forging to the front as a manufacturing and mercantile state, while it is losing little as an agricultural state.

The detailed population by counties is as follows:

Population statistics table for Alamance County, Alleghany County, Anson County, and Cabarrus County.

Canada's Parliament seems shockingly ignorant of the first rudiments of practical politics. Witness that \$30,000,000 surplus.—Jackson Patriot.