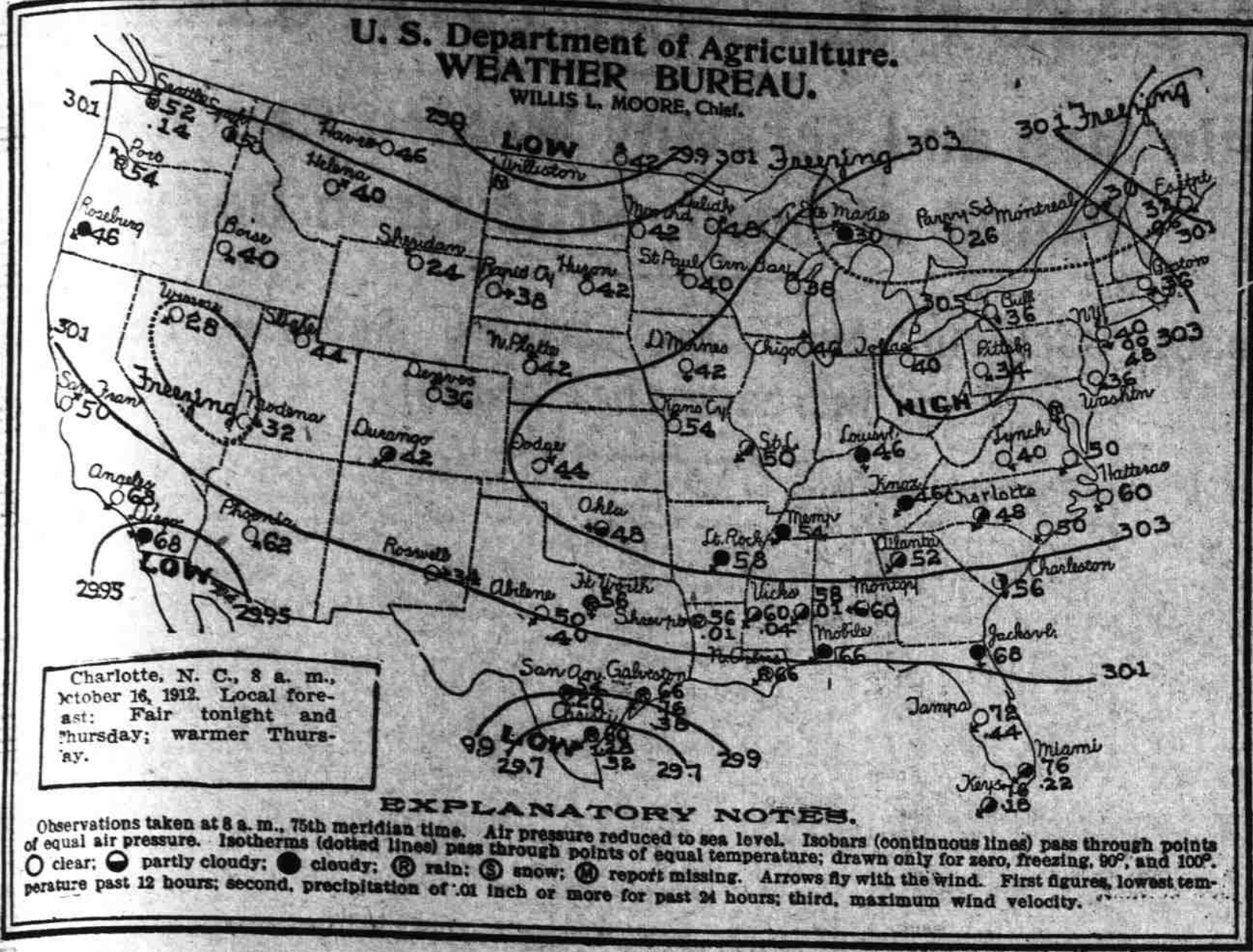


WEATHER CONDITIONS AT 8 A. M.



Charlotte, N. C., 8 a. m., October 16, 1912. Local forecast: Fair tonight and Thursday; warmer Thursday; warmer Thursday.

EXPLANATION OF TODAY'S MAP. The interior high pressure area has advanced to the Eastern part of the country, being central today over Ohio. With it is cooler weather over the Eastern States, a considerable area along the Canadian border being covered by freezing temperatures.

THE WEATHER. Forecast for North Carolina: Generally fair tonight and Thursday; warmer Thursday. Moderate northeast winds.

BULLETIN. Summary of observations made at United States weather bureau stations Wednesday, October 16. Table with columns for Stations and Weather at 8 a. m., Temperature (High, Low, Last night), and Wind (Direction, Force).

AMUSEMENTS. 'The Traveling Salesman.' The fact that the managers of 'The Traveling Salesman' company guarantee one thousand laughs during the course of the evening's entertainment may sound to some people like superlative boasting, but nobody can actually figure the separate laughs that emanate from the audience, as there is no cessation, excepting during the intermissions, and even then chucking and giggling are intermittently indulged in.

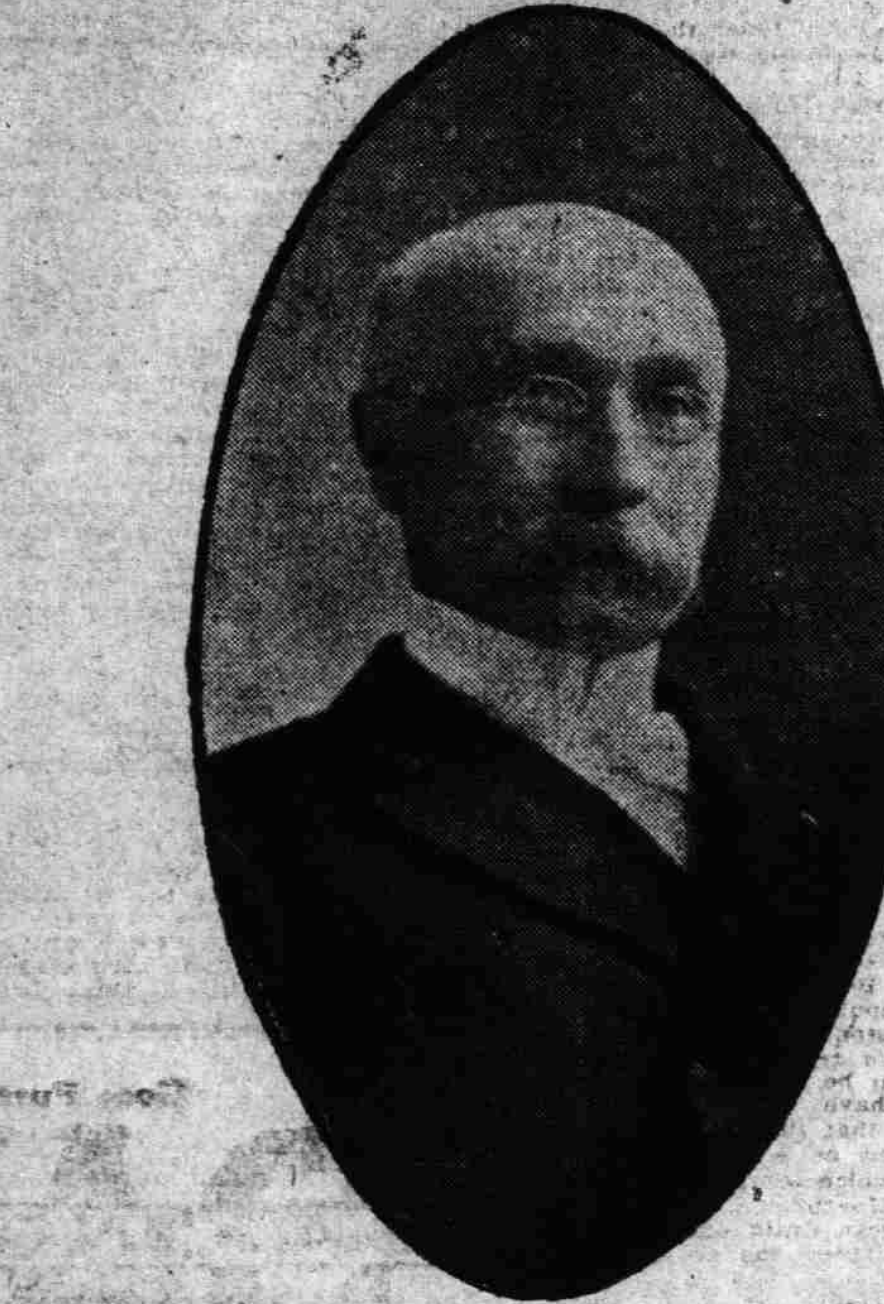
'Human Top' is Coming. Carlos Caesaro, known in Europe as 'The Human Top' because of his remarkable circumambulations in the circus ring, has been engaged by Ringling Bros. as one of their top-liners of this season.

Boys and Their Shoes

To shoe the boy for school or dress purposes, we ask that you see these brands first. Boys' Wearwell Shoes are good substantial school shoes or they are nicely finished for dress wear. Price \$2.00 the pair.

GILMER-MOORE COMPANY. Dressed shoes for the young fellows at \$2.50 and \$2.75.

DR. N. F. deCLIFFORD.



The above is a likeness of Dr. N. F. de Clifford, the celebrated Masonic traveler and lecturer, who has probably spent more time and energy in personal research work delving into the Past History of Masonic symbols and tenets.

have been adhered to and the production is mounted superbly. It employs 1,300 people, 500 horses and a trainload of special scenery and stage properties. A ballet of 300 dancing girls are seen.

Now Is The Time

to place your order for an artistic Steiff or Shaw Piano or Player Piano before the Christmas rush. We have hundreds of orders ahead at our factories and it begins to look like we will be unable to supply the demand. Better select your piano now and be sure of not being disappointed the day you want it.

Chas. M. Steiff. Manufacturer of the Piano With the Sweet Tone. SOUTHERN WAREHOUSE, 219 S. TRYON STREET, Opposite Academy of Music, Charlotte, N. C. C. H. WILMOTH, Manager.

'CORRECT DRESS FOR MEN.'



New Wrinkles In Hats

Graham's got 'em from \$1.00 to \$6.00. Some of them are like the other fellows, but some are different and more stylish. Hats to match your suit. Let us 'tape' you for a new Fall Suit.



PAY BEST DIVIDENDS CHRONICLE WANT ADS SOUTHERN RAILWAY

'Premier Carrier of the South.' N. E.—The following schedule figures published only as information and are not guaranteed. No. 22-2:10 a. m.—Daily, Birmingham special for Atlanta and Birmingham. Pullman drawing room sleeping cars, observation cars and day coaches New York and Washington to Birmingham. Pullman drawing room sleeping car Richmond to Birmingham. Dining car service.

SEABOARD AIR LINE RAILWAY. TRAINS LEAVE CHARLOTTE—EFFECTIVE APRIL 2, 1912. No. 40-5:00 a. m., through train for Wilmington with parlor car attached. Connects at Hamlet with No. 33 for Portsmouth and Norfolk. No. 66 for Raleigh, Washington, Baltimore, Philadelphia and New York. Dining car service and vestibule coaches to Washington. Pullman sleeping cars to Jersey City.

NORFOLK & WESTERN RAILWAY. Schedules in effect May 26, 1912. 7:50 am Lv Charlotte, So. Ry. Ar 8:40 pm 2:00 pm Lv Winston, N. & W. Ar 2:00 pm 4:04 pm Lv Martinsville Lv 11:56 am 6:30 pm Ar Roanoke Lv 9:56 am Connect at Roanoke with trains East and West. Pullman sleepers, dining cars. Above trains carry Pullman sleeper, Winston-Salem and New York, via Shenandoah Valley Route—Dining cars north of Roanoke.

Adler-Rochester Clothes

Are up to the standard and the standard is at the top. Come, let us clothe you.

GIBSON-WOOLLEY COMPANY FOR MEN WHO KNOW

LINED UP FOR FALL With Fine, Clean New Stocks

Of the Snappiest Clothes Made In America. Style in every inch of them, a full line of the very latest models, everything that a well-dressed man could desire. And the greatest value-giving proposition in Charlotte. You have probably decided upon a particular price you wish to pay for your Fall Suit or Overcoat.

This price may be \$18.00, \$20.00, \$25.00 or \$30.00. Any of these prices will probably command good cloth and good trimmings at almost any store. But are you content with just a nondescript sort of goodness? No! You want clothes of compelling individuality and commanding style—Tate-Brown Clothes—the achievement of the greatest tailoring institution in New York.

The Tate - Brown Co.

J. S. Elam JEWELRY OF QUALITY. The Little Store With the Big Stock Wants Your Trade.

Charlotte Transfer Company. Baggage, Passenger and Freight Service. 'ALWAYS ON THE MINUTE'—NIGHT OR DAY. JAKE MARTIN, Mgr. Phone Nos. 298-1919.

SEABOARD AIR LINE RAILWAY. TRAINS LEAVE CHARLOTTE—EFFECTIVE APRIL 2, 1912. No. 40-5:00 a. m., through train for Wilmington with parlor car attached. Connects at Hamlet with No. 33 for Portsmouth and Norfolk. No. 66 for Raleigh, Washington, Baltimore, Philadelphia and New York. Dining car service and vestibule coaches to Washington. Pullman sleeping cars to Jersey City.

NORFOLK & WESTERN RAILWAY. Schedules in effect May 26, 1912. 7:50 am Lv Charlotte, So. Ry. Ar 8:40 pm 2:00 pm Lv Winston, N. & W. Ar 2:00 pm 4:04 pm Lv Martinsville Lv 11:56 am 6:30 pm Ar Roanoke Lv 9:56 am Connect at Roanoke with trains East and West. Pullman sleepers, dining cars. Above trains carry Pullman sleeper, Winston-Salem and New York, via Shenandoah Valley Route—Dining cars north of Roanoke.

BLAKE'S DRUG SHOP. On the Square. Prescriptions Filled Day and Night. BLAKE'S ALPHABET. U Stands for Union. In union there is strength. Lets form a drug store union. We are anxious at Jno. S. Blake Drug Co. Phone 41. On the Square.

High-Class Proposition. If you are going to tackle a High-Class Proposition you must look the part.

'MELLON'S Clothes' will fit you as to appearances to tackle any kind of a proposition, whether it's to call on a Trust Magnate, to go to a Club Reunion or to attend any Social Function. It's the 'know-it-to-be-correct' feeling we all look for in clothes. Come now and let us show you our Fall Models. ED. MELLON CO. You Can Always Get it at Mellon's