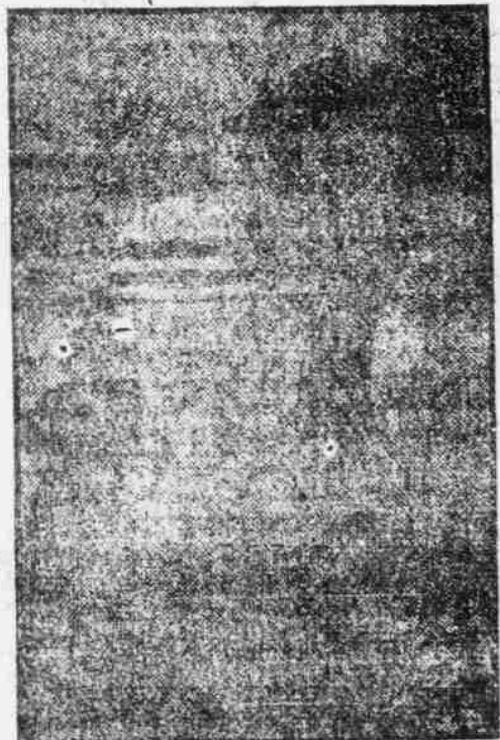


Health and Strength Regained By Splendid Tonic Influence

The Season's Difference Affects All Manner of Life and the Human Body Needs Help Most of All

So many people use S. S. S. every Spring that it is really a message of health to those who wonder why they feel so utterly worn out when the trees begin to bud. Throughout the Southern States S. S. S. has been for forty years a trusted tonic for the early days of Spring. Of purely vegetable origin it combines elements which kindly influence the overworked blood vessels or overstrained nerve tissues. Its action is medicinal just as meat or milk is nutritional.



THE GREAT QUESTION OF HEALTH ANSWERED

OUR WINTER INACTIVITY.

During the confined months of the winter season there are many of us who are less active. The liver is sluggish, the skin is dormant, the kidneys are overworked, the lungs are not called upon to breathe with sufficient depth and energy to satisfy the demands of the tissues for their needed amount of oxygen. And thus the body needs help, must have it. Experience comes to our relief, and what better guide could we select than the example of those who annually know exactly what to do—use S. S. S.

RETAINS ITS INDIVIDUALITY.

The wonderful tonic influence of this splendid blood purifier is traced to its ability to retain its individuality. It is acceptable to the weakest stomach, and yet it is not changed or converted or excreted until it has exercised its medicinal dominance throughout the blood circulation.

This is important. Some drugs have this same effect, but they remain in the system, a fruitful source of irritation and danger. S. S. S. does not remain in the system, for after having served the purpose as a medicinal action, it is excreted with the waste products, and this emunctory process goes on every second of time.

BLOOD IMPURITIES BY NAME.

We are prone to think too much of names. When the muscles ache and the sciatic nerve hurts, and there are general pains the word Rheumatism leads one to forget that it is the blood as much as the nerves that are responsible for these pains. And S. S. S. proves this by its tonic influence in the blood. When the mind and body are jaded and utterly cast down with malarial infection, it is the blood that contains this poisonous influence. Here again S. S. S. asserts its tonic influence. And if from a sluggish blood stream there are skin eruptions, blood risings, indolent abscesses and other evidences of accumulated body wastes, the medicinal action of S. S. S. gives ocular evidence of its medicinal influence.

A TRUTHFUL MEDICINE.

Not one particle of anything other than the native roots and simple preservatives are used in the preparation of S. S. S. It has survived many years of the most searching tests, and never in its forty and more years of usefulness has it ever been found otherwise than a purely beneficial medicine, helpful to the young, invigorating to those advanced in years, and containing just the amount of gentle exhilaration so much required by most women.

S. S. S. is strongly recommended in almost every community in America, and is sold in most drug, department and general stores. But by all means avoid substitutes. Do not permit anyone to palm off something they claim to be "Just as good." Ask for S. S. S., insist upon getting it, and you will thus avoid grievous disappointment. S. S. S. is prepared only in the Laboratory of the Swift Specific Co., 408 Swift Bldg., Atlanta, Ga. And for a special book on Catarrh or Rheumatism or skin diseases or blood troubles, write to our Medical Dept., who will be glad to give you special and personal directions in the use of S. S. S.

The Swift Specific Co. Medical Department 408 Swift Building Atlanta, Ga. I enclose a brief description of my case. Please send me absolute directions for use, your advice, diagnosis and all information for Private Home Treatment. I have begun the use of S. S. S. NAME: ADDRESS: CITY: STATE: P. O.:

BASEBALL YESTERDAY.

Cleveland Wallops Boston. Macon, Ga., March 26.—The Cleveland American Association team again defeated the Boston National League Club here yesterday 3 to 2. Cleveland now has won three out of the four games played with Boston. Cleveland made its three runs in the ninth inning and Boston its two in the eighth.

Score: R. H. E. Cleveland... 3 7 0 Boston... 2 3 2 Batteries: Frost, Dasher, Vogt and Casby; Rudolph, Perdue and Gowdy.

Baltimore Defeats Philadelphia. Wilmington, March 26.—The Baltimore International defeated the Philadelphia American League regular team here yesterday 6 to 2. Frank Baker had four hits in five times at bat, one a two-base hit. Two costly errors by Collins contributed to Baltimore's score.

Score: R. H. E. Baltimore... 6 3 2 Philadelphia... 2 13 2 Batteries: Ruth and Egan; Brown, Penneck and Schang, Lapp.

Buffalo Defeats Pittsburgh. Danville, Va., March 26.—The Buffalo Federals came from behind in the seventh and last innings of the game here yesterday with the Pittsburgh club of the same league and by a timely batting rally in which much power of attack was shown, scored three runs and took the game by the score of 6 to 4. Earl Moore, the first twirler for the Buffalo team, was unhittable, only one safety being garnered off his delivery in the time he occupied the rubber. Smith hit two terrific drives that netted three bases each and both Oakes and Bradley made two hits for the Stogies.

Score: R. H. E. Pittsburgh... 4 6 3 Buffalo... 6 5 1 Batteries: Leclair, Kenetzer, D. Roberts and Roberts, Berry; Moore, Houser, Schlitzer and Blair, Allen.

Atlanta Goes Newark One Better. Atlanta, Ga., March 26.—Ten innings were necessary to decide yesterday's spring exhibition game between the Atlanta Southern Association Club and the Newark International League team. Atlanta finally winning 7 to 6. Newark tied the score in the ninth inning by making three runs.

Score: R. H. E. Atlanta... 7 11 6 Newark... 6 9 3 Batteries: Perryman, Dent and Dunn, Reynolds; Donnelly, Holmquist, Britton and O'Rourke, Heckinger.

Nashville-St. Louis Tie Up. Nashville, Tenn., March 26.—Nashville played the St. Louis Americans to a tie yesterday. The score was 6 to 6, darkness ending the game after nine innings.

Score: R. H. E. Nashville... 6 10 2 St. Louis... 6 12 3 Batteries: Rogers, Stevens and Smith; Witte, James and Clemens, Agnew.

Washington Defeats Georgetown. Washington, March 26.—The Georgetown University team proved easy for the Washington Americans in the first exhibition game on the home grounds here yesterday.

Mumford and Ayers, recruits, held the collegians safe throughout the game.

Score: R. H. E. Washington... 10 12 1 Georgetown... 2 4 3 Phillis Smash Raleigh. Raleigh, March 26.—The Phillis easily took yesterday's game here defeating the local Carolina Leaguers 11 to 2.

Score: R. H. E. Philadelphia... 11 18 0 Raleigh... 2 6 4 Mayer, Tincup and Killifer, Burns; Von, Belanger, Groves and Riley, Parkins.

Lafayette Defeats South Carolina. Columbia, S. C., March 26.—The Lafayette College baseball team of Easton, Pa., yesterday won from the University of South Carolina team here 4 to 3. The Easton collegians won two of the three games in the series, which closed yesterday.

St. Louis Defeats Waycross 10 to 1. Waycross, March 26.—The St. Louis American, second team, defeated Waycross 10 to 1.

NEW YORK NATIONALS BROKE CAMP YESTERDAY. By Associated Press. Marin, Tex., March 26.—The New York Nationals broke their training camp here yesterday. The team will return home in two squads, one led by Donlin and the other the regular, by Captain Larry Doyle.

"DANNY" MAHER TO RETIRE FROM THE TURF. By Associated Press. London, March 26.—"Danny" Maher, the American jockey, who has just recovered from a long illness, has decided to retire from the turf.

PLAIN TRUTH THAT'S WORTH MONEY. Using Foley's Honey and Tar for a cough and cold is just practical common sense. It is exactly made to stop a cough and check a cold and it prevents lagrippe, bronchitis or pneumonia. F. F. Monahan, Monomonic, Wis., says: "I am exposed to all kinds of weather and I find Foley's Honey and Tar Compound always fixes me up in good shape when I catch cold or have a bad cough. I recommend it gladly." Refuse substitutes. Bowen Drug Store.



Wanted—An Extension Telephone

IT'S needed to relieve you and your clerks of the fuss, and annoyance, and delay of using a single telephone when someone has a message to send or a call to answer.

Let us install for you, an extension station—or two. We can arrange it so that there will always be a telephone handy to every one.

The cost of this service is trifling. Call the Contract Department to-day.



SOUTHERN BELL TELEPHONE AND TELEGRAPH COMPANY

FOR JOB PRINTING PHONE 1530

Another Shipment

We received today ONE HUNDRED AND FIFTY new patterns from "ACROSS THE POND". Weaves, texture and tone very desirable for immediate wear. COULD YOU GIVE THEM A LOOK TODAY?

"Let Hummel Be Your Tailor." 15 South Tryon St.



If you deal in values—you'll appreciate the Ford. Its simplicity—its economy—and its dependability give it a value that cannot be measured by its price. The Ford is the one car that has "made good" in world-wide service.

\$548 is the price of the Ford runabout the touring car is \$593 f. o. b. Charlotte complete with equipment. Get catalog and particulars. Ford Sales Co., 24 E. 6th St.

This is The "NOTASEME" Stoned-Lined Refrigerator

round corners at the back and bottom. There is no lurking place for germs in this Refrigerator. Absolutely sanitary, easily and quickly cleaned. Let us show you its many advantages.

J. N. McCausland & Co. Stove Dealers Sheet Metal Workers

Marlborough - Blenheim

Broadway, 36-37th Street NEW YORK CITY

On the site of the former Marlborough Hotel. One of the Finest Up-to-date Hotels in the City. Restaurant designed in the Adam Period; seating capacity over 600, and one of the finest on Broadway.

It has a superb location, situated in the heart of New York. Within a stone's throw of the leading theatres and shops and three minutes of the Penn., D. L. & W. and Erie stations, and five minutes to Grand Central Station.

350 Rooms with bath at \$150 Per Day and up. Excellent Cuisine at Very Moderate Prices. Wire for Reservations at our expense. MARLBOROUGH-BLENHEIM HOTEL CO.

Very pleasant last than being me; thy love to me was wonderful, passing the love of women.

CASTORIA

For Infants and Children. The Kind You Have Always Bought. Bears the Signature of J. C. Watson

S. A. L. RAILWAY

"The Progressive Railway of the South." Trains Leave Charlotte for the following points: EAST AND NORTH BOUND. No. 14-3:00 a. m.—Through train from Wilmington, with parlor, dining, and sleeping cars, connecting at Atlantic City for Portmouth, with dining and sleeping cars, reaching Portmouth at 10:00 a. m. All points north. Dining car service connecting at Atlantic City for all points north.

No. 15-10:10 a. m.—For Raleigh and all local points. No. 16-10:10 a. m.—For Wilmington, sleeping car passengers may stay all night at Wilmington. This train connects at Atlantic City for Portmouth, Jacksonville and all points north, north and connecting at Atlantic City for all points north.

No. 17-10:10 a. m.—Local for Raleigh, sleeping car passengers may stay all night at Raleigh. This train connects at Atlantic City for Portmouth, Jacksonville and all points north, north and connecting at Atlantic City for all points north.

No. 18-10:10 a. m.—Local for Raleigh, sleeping car passengers may stay all night at Raleigh. This train connects at Atlantic City for Portmouth, Jacksonville and all points north, north and connecting at Atlantic City for all points north.

No. 19-10:10 a. m.—Local for Raleigh, sleeping car passengers may stay all night at Raleigh. This train connects at Atlantic City for Portmouth, Jacksonville and all points north, north and connecting at Atlantic City for all points north.

No. 20-10:10 a. m.—Local for Raleigh, sleeping car passengers may stay all night at Raleigh. This train connects at Atlantic City for Portmouth, Jacksonville and all points north, north and connecting at Atlantic City for all points north.

No. 21-10:10 a. m.—Local for Raleigh, sleeping car passengers may stay all night at Raleigh. This train connects at Atlantic City for Portmouth, Jacksonville and all points north, north and connecting at Atlantic City for all points north.

No. 22-10:10 a. m.—Local for Raleigh, sleeping car passengers may stay all night at Raleigh. This train connects at Atlantic City for Portmouth, Jacksonville and all points north, north and connecting at Atlantic City for all points north.

No. 23-10:10 a. m.—Local for Raleigh, sleeping car passengers may stay all night at Raleigh. This train connects at Atlantic City for Portmouth, Jacksonville and all points north, north and connecting at Atlantic City for all points north.

No. 24-10:10 a. m.—Local for Raleigh, sleeping car passengers may stay all night at Raleigh. This train connects at Atlantic City for Portmouth, Jacksonville and all points north, north and connecting at Atlantic City for all points north.

No. 25-10:10 a. m.—Local for Raleigh, sleeping car passengers may stay all night at Raleigh. This train connects at Atlantic City for Portmouth, Jacksonville and all points north, north and connecting at Atlantic City for all points north.

No. 26-10:10 a. m.—Local for Raleigh, sleeping car passengers may stay all night at Raleigh. This train connects at Atlantic City for Portmouth, Jacksonville and all points north, north and connecting at Atlantic City for all points north.

No. 27-10:10 a. m.—Local for Raleigh, sleeping car passengers may stay all night at Raleigh. This train connects at Atlantic City for Portmouth, Jacksonville and all points north, north and connecting at Atlantic City for all points north.

No. 28-10:10 a. m.—Local for Raleigh, sleeping car passengers may stay all night at Raleigh. This train connects at Atlantic City for Portmouth, Jacksonville and all points north, north and connecting at Atlantic City for all points north.

SPORTS

GAMES SCHEDULED FOR THIS WEEK.

- Friday, March 27—Carolina vs. West Virginia Wesleyan at Chapel Hill. A. & M. vs. University of Vermont at Raleigh. Wake Forest vs. William and Mary at Wake Forest. Guilford vs. Eastern College at Guilford.
- Saturday, March 28—Carolina vs. University of Vermont at Chapel Hill. A. & M. vs. Amherst at Raleigh. Wake Forest vs. Trinity at Henderson.

FEDERAL LEAGUE PRESIDENT TO GET \$15,000

By Associated Press. Baltimore, Md., March 26.—That the yearly salary of President Gilmore of the Federal League is \$15,000 was authoritatively stated here yesterday.

CHAMPION WOMAN GOLFER SAILS.

By Associated Press. New York, March 26.—Refusing to state positively whether she would return to America to defend her national golf title, Miss Gladys Ravenscroft sailed today for England in company with Miss Muriel Dodd, champion woman golfer of Great Britain and Canada. Miss Ravenscroft said she disliked to allow her title to go by default and if possible to return she would like nothing better than to do so.

Miss Dodd said she would not be here again this season. "We have had the time of our lives and everywhere we have been received most graciously and welcomed most cordially," said Miss Ravenscroft.

After a Hearty Meal Is there a sense of fullness—of bloating or of nausea? Something is disturbing the entire digestive system and help is needed at once. Try HOSTETTER'S STOMACH BITTERS

MILES MAIN HAS LONGER REACH THAN WALTER JOHNSON

Gulfport, Miss., March 26.—That Walter Johnson can pitch a baseball with the wonderful speed that he is attributed to a great extent to the fact that he has long gorilla-like arms which enable him to get a powerful, extensive swing before letting the ball go. If long, powerful arms produce speed then Miles Main, the Tigers' longest hurler, ought to have smoke enough when he gets going to make Pittsburg look like a new fall of snow.

Walter Johnson is six feet and one inch tall. His entire reach from tip to tip of the middle finger of his left hand to the tip of the middle finger of his right hand is close to seventy-two inches.

Miles Main can put the tip of the middle finger of his left hand on the tip of Johnson's finger and his right hand will extend seven inches beyond Johnson's.

Main undoubtedly has the longest reach of any man in baseball. Each arm is thirty-four inches from the shoulder to the finger tip. He can separate his finger tips six feet eight inches, or eighty inches.

As a general thing a man can stretch his arms so that he will measure from finger tip to finger tip just his height. Main can exceed his height by two inches.

SIX SOUTH CAROLINA CITIES TO HAVE HORSE SHOWS

The Columbia Horse Show Association has been permanently organized. This assures Columbia a place on the circuit consisting of six cities, as follows: Columbia, Darlington, Greenville, Greenwood and Sumter. According to present plans there will be five performances in Columbia beginning the night of Tuesday, April 11, with matinee and evening performances on Wednesday and Thursday, following the opening day. More than 200 horses are expected to be entered. The state fair grounds will probably be the scene of the exhibitions where will gather superb horseflesh, beautiful women and gallant men.

Horse Show Park About Ready. Sumter, March 26.—The horse show park and grand stand, at the old baseball grounds, will be in readiness for the show which opens April 7th. The grand stand will be the largest and most comfortable this city has ever had.

KICKAPOO WORM KILLER EXPELS WORMS. The cause of your child's ill—the foul, fetid, offensive breath—The starting up with terror and grinding of teeth while asleep—The sallow complexion—The dark circles under the eyes—Are all indications of worms. Kickapoo Worm Killer is what your child needs; it expels the worms, the cause of the child's unhealthy condition. For the removal of seat, stomach and pin worms, Kickapoo Worm Killer gives sure relief. Its laxative effect adds tone to the general system. Supplied as candy confection—children like it. Safe and sure relief. Guaranteed. Buy a box today. Price 25c. All druggists or by mail. Kickapoo Indian Med. Co., Philadelphia or St. Louis.

The nightingale sings me when summer nights are silences, and the stars tremble, listening to her tale—Butler.

SOME BIG LEAGUE BALL TOMORROW AT WEARN FIELD

There will no doubt be a number of fans out at Wearn Field tomorrow when Frank Chance and his underlings engage Manager Clymer's herd of Bisons in nine innings of sure enough baseball. Many will take this opportunity to see the big boys in action and the fact that Frank Chance will play is enough in itself to make a number of bugs journey out to Wearn Field.

Fullenwider will perhaps do the greater part of the pitching for Buffalo, and it will be a real pleasure to Charlotte fans to see their old idol in the box.

The Bisons should be in great shape tomorrow, having had several good practices, all of which have been full of pep and enthusiasm. Clymer has some real stars in his bunch, his first baseman, Houser, being about as good as ever drifted down this way.

The game tomorrow will be called at 3:30.

The Indian is Making a Great Showing

Jim Thorpe, the Indian athlete, is starting out in great fashion this year and more than likely will have a great year in the big league. The following clipping from The Houston Post in regard to the game between New York and Houston in Houston Monday, will be of interest, wherein the Giants won:

"To Jim Thorpe largely belong the credit for the victory. He made half of the six hits credited to the Giants and his third bingle in the ninth, a wicked smash to right, was the starter of the run gathering. He went to second on Doyle's out at first, and scored on the first run of the game on Merkle's two-bagger inside of third base."