

**ANNUAL COUNTY EXHIBIT.**

(CONTINUED FROM PAGE 3.)

Total promiscuous claims allowed,	\$12801 31
Total outside pauper claims allowed,	532 00
Insolvent witness claims allowed Spring Term Court, 1910,	59 71
Insolvent witness claims allowed fall term court, 1910,	104 39
Official court claims allowed spring term court, 1910,	102 06
Official court claims allowed fall term court, 1910,	94 46
Total jury claims paid spring term court, 1910,	474 15
Total jury claims paid fall term court, 1910,	537 85
<b>Total current expense,</b>	<b>\$14705 93</b>
Total amount paid on the outstanding court house and jail bonds, principal and interest,	\$6400 00
<b>Total amount paid out for fiscal year,</b>	<b>\$21105 93</b>
<b>SHERIFF'S SETTLEMENT.</b>	
C M Jones', Sheriff's, settlement of general county funds for the year 1909 :	
To amount due from property taxes,	\$8221 82
To amount due from poll taxes,	1106 18
To amount due from schedules, b & c	133 00
To amount due from insolvent and uncharged taxes,	30 29
To amount due from double taxes property and poll,	210 27
To amount collected from fines for spitting on c h floor,	1 75
<b>Total</b>	<b>\$9753 31</b>
<b>Credits :</b>	
By releases allowed,	\$224 75
By insolvents allowed,	110 85
By amt. allowed on account of sold for taxes and bid in for county,	4 26
By amt. paid State Treasurer for indigent pupils,	27 80
	<b>\$ 377 66</b>
By amt. of commissions allowed on	\$9375 65
	468 83
	<b>\$8906 82</b>
By vouchers examined and approved	\$17312 59
By amt. overpaid and due Sheriff	8405 77 (the same is credited on special court house and jail building bonds funds. See settlement of same following.)
This makes the Sheriff's settlement of general county funds for the year 1909 complete.	
<b>SPECIAL COUNTY FUNDS.</b>	
C M Jones', Sheriff's settlement of special court house and jail building bonds funds for the year 1909 :	
To amount due from property taxes,	\$8685 02
To amount due from insolvent and uncharged taxes,	45 43
To amount due from double taxes,	315 40
<b>Total,</b>	<b>\$9045 85</b>
<b>Credits :</b>	
By releases allowed,	\$ 352 10
By amt. allowed on account of land sold for taxes and bid in for county,	6 98
By insolvents allowed,	166 27
	<b>\$524 75</b>
By commissions allowed on \$8521 10	\$8521 10
	426 05
	<b>\$8095 05</b>
By amt. overpaid from settlement of general county funds and due Sh'ff. (See above settlement.)	\$8405 77
By amt. overpaid by Sh'ff and due him from this settlement, \$310 72, for which amt. an order is issued on the county Treas'r.	
This makes Sheriff's settlement of special court house and jail building bonds funds complete.	
Sheriff C M Jones' settlement of general and special county school funds for the year 1909 :	
To amt. of revenue for school funds received from all sources after deducting releases, insolvents and Sh'ff's commissions allowed,	\$11899 24
By Treas. A F Christian's vouchers examined and approved,	\$11899 24
This makes Sh'ff's settlement of general and special county school funds for the year 1909 complete.	
Sheriff C M Jones' settlement of Walnut Cove special school district funds for the year 1909 :	
To amt. received from all sources, after deducting insolvents, releases and Sh'ff's coms. allowed,	\$646 49
By Treas. A F Christian's vouchers examined and approved,	646 49
This makes Sh'ff's settlement of Walnut Cove special school dist. funds for year 1909 complete.	
Sheriff C M Jones' settlement of King special school district funds for the year 1909 :	
To amt. rec'd from all sources after deducting releases, insolvents and Sh'ff's coms. allowed,	\$415 59
By Treas. A F Christian's vouchers exam. and app'vd,	415 59
This makes Sheriff's settlement of King spec. school dist. funds for year 1909 complete.	
Sheriff C M Jones' settlement of Pinnacle graded school dist. funds for the year 1909 :	
To amt. rec'd from all sources, after deducting releases, insolvents and Sh'ff's coms. allowed,	\$257 57
By Treas. A F Christian's vouchers exam. and app'vd,	257 57
This makes Sheriff's settlement of Pinnacle graded school dist. funds for the year 1909 complete.	
Treas. A F Christian's settlement of county funds for year 1909 :	
To amt. rec'd from C M Jones, Sh'ff, general and special county funds,	\$17242 34
To amt. rec'd from R J Petree, ex-Sheriff, taxes,	856 00
To amt. rec'd from R J Petree, ex-Sheriff, taxes,	21 99
To amt. rec'd from R J Petree, ex-Sheriff, taxes,	50 08
To amt. rec'd from M T Chilton, c s c,	163 65
To amt. rec'd from C M Jones, sh'ff, in Cook case,	8 45
To amt. rec'd from Y S Smith, rent for county home farm,	70 00
To amt. rec'd from W C Slate, R D, in bridge matter,	148 51
To amt. rec'd from W C Slate, R D, from sale of old still,	1 00
<b>Total receipts,</b>	<b>\$18557 02</b>
By coms. on receipts \$18557 02, less on \$310 72, an overpayment by Sh'ff of county funds, \$18246 30 at one half of 1 per cent.,	91 23
	<b>\$18465 79</b>
Balance on hand at Sept. settlement 1909,	6768 36
	<b>\$25234 15</b>
By vouchers examined and approved,	\$19037 96
By coms. on vouchers at 2 1-2 per cent.	475 95
By amt. refunded to Sh'ff for overpayment on county funds,	310 72
	<b>\$19824 63</b>
Balance in hands of Treasurer Sept. 7, 1909,	\$5409 52
Treasurer A F Christian's settlement of general and special county school funds for the year 1909 :	
To amt. rec'd from C M Jones, Sh'ff, general and special county school funds for the year 1909,	\$13218 89
To amt. rec'd from M T Chilton, C S C., fines, etc.	822 40

**LOCAL ITEMS.**

Mr. R. F. Fulk, of Pinnacle, was a Danbury visitor Tuesday.

Messrs. J. Spot Taylor, C. M. Jones, N. O. Petree and Dr. W. C. Slate are attending the lot sale at Walnut Cove today.

Mr. J. S. D. Pulliam, a prominent citizen of King, was here yesterday, and qualified as executor of the will of the late Rev. Solomon Helsabeck.

Supt. Public Schools J. T. Smith left today for Winston to attend an educational rally. The County Superintendents and high school teachers of twenty-one counties meet in the Twin-City today.

Every family has need of a good, reliable liniment. For sprains, bruises, soreness of the muscles and rheumatic pains there is none better than Chamberlain's. Sold by all dealers.

**LAND SALE :**

By virtue of the power of sale contained in a certain deed in trust executed on the 28th day of October, 1909, by Moses P. Bullin and his wife Frances Bullin to secure the payment of a certain bond due to Mrs. A. J. Jewell which bond has been transferred and assigned to the Bank of Stokes County, and which deed in trust appears on record in the office of the Register of Deeds of Stokes County in Book No. 51 page 558, and request being made by the owner of the bond and debt, in accordance with the terms, stipulations and conditions contained in said deed in trust I will sell at public auction to the highest bidder for cash at Court House door in the town of Danbury, N. C. on Monday the second day of January, 1911, the lands conveyed in said deed in trust which are described as follows: A certain tract of land lying and being in Stokes county aforesaid and more particularly described as follows: Beginning at a poplar James R. Mabe's former corner, runs south on his former line 18 chains to a stake in Heck's former line, thence East on that line 12 chs. to pointers in said line corner of Lot No. 3, thence north on that line 18 chains to a small hickory, thence W. on the Martin line 12 chains to the beginning, containing 21 1/2 acres, more or less, it being the same land that conveyed by deed this day from A. J. Jewell to Moses P. Bullin and Frances Bullin his wife and also the same land that was conveyed to A. J. Jewell by W. C. Mabe and others, see Book 26, page 55, in Register's office, Stokes county. This land adjoining the land of M. V. Mabe, Jim Stephens, John Mabe and others, lying on Seven Island creek.

This Nov. 22, 1910.

JOHN D. HUMPHREYS, Trustee.

**NOTICE :**

Having this day duly qualified as executor of the last will and testament of Solomon H. Helsebeck, deceased, all persons owing said estate are requested to come forward and make immediate settlement of same and all persons holding claims against said estate are hereby notified to present the same duly authenticated to me for payment on or before the 24th day of December, 1911, or this notice will be pleaded in bar of their recovery.

King, N. C., Dec. 14, 1910.

J. S. D. PULLIAM, Ex. of Solomon H. Helsebeck, dec'd.  
J. D. Humphreys, Atty. for Ex.

To amt. rec'd from State Treas. on first \$100000.	1187 12
To amt. rec'd from State Treas. on 2nd \$100000,	1913 45
To amt. rec'd from County Supt., examination fees,	27 00
To amt. rec'd from private donations for libraries,	45 00
To amt. rec'd from State Treas. for libraries,	45 00
To amt. rec'd from sale of old school property,	60 00
To amt. rec'd from paid tuition,	20 00
To amt. rec'd from private donations for desks,	60 00
To amt. received from J. P. fines,	56 02
To amt. rec'd from State Treas., loan fund,	625 00
To amt. rec'd from private donations for Pinnacle H. School,	250 00
To amt. rec'd from State Treas. for Pinnacle H. School,	250 00
To amt. rec'd from State Treas. for King High School,	250 00
To amt. rec'd from State Treas. for Walnut Cove H. S.	250 00
<b>Total receipts from all sources,</b>	<b>\$19079 88</b>
Bal. on hand at Sept. settlement, 1909,	2765 93
<b>Total,</b>	<b>\$21845 81</b>
By vouchers examined and approved,	\$17564 99
By commissions on vouchers \$17564 99 at 2 per cent.	351 29
	<b>\$17916 28</b>
Bal. in hands of Treas. Sept. 7, 1910,	\$3929 53
The above balance belongs to school fund as follows :	
General school fund,	\$3472 43
Pinnacle High School,	156 96
King High School,	117 60
Walnut Cove High School,	89 22
Walnut Cove Special School,	113 43
Pinnacle Graded School,	29 99
	<b>\$3929 53</b>
<b>North Carolina.</b>	
Stokes county.	
I, W. C. Slate, Clerk of the Board of County Commissioners for Stokes county, N. C., do certify that the foregoing is a true statement of county claims audited and allowed by said Board of County Commissioners from Dec. 6, 1909, to Dec. 6, 1910. Also the amount of revenue received from all sources for county, school and special purposes, and the amount of county, school and special funds disbursed for the fiscal year ending Dec. 5, 1910, as appears from Sheriff's and Treasurer's settlements of taxes, etc.	
Witness my hand at office in Danbury, N. C., Dec. 5, 1910.	
W. C. SLATE,	
Register of Deeds and Ex-Officio Clerk of Board of Co. Com'rs.	

R. W. GORRELL

P. A. GORRELL

**Farmers' Warehouse**

WINSTON-SALEM, N. C.

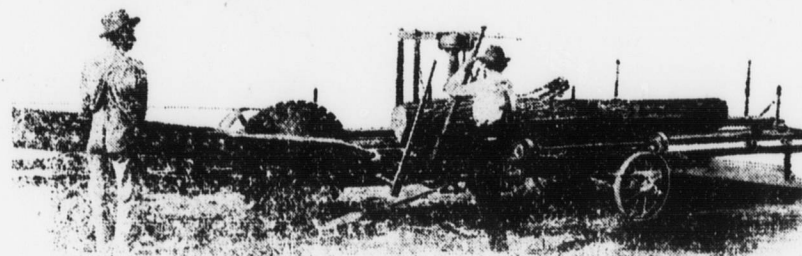
The Home of BIG PRICES and HIGH AVERAGES

We want to sell your Tobacco, and claim, with our knowledge of Tobacco and a life time in the warehouse business, that we can safely guarantee you the highest possible price. Our house is splendidly lighted and easily the best located house in Winston, being nearest all of the reordering houses. Good prices are what you are after and you may count on getting the best at

**Farmers' Warehouse**

FIRST SALE DAYS :

DECEMBER, 1910, Mondays, Wednesdays, Fridays.



**THE GRABS SAW MILL**

PATENTED AND MANUFACTURED BY

V. T. GRABS, KING, N. C.

All iron and steel, the best and completest mill on earth. Turns its own logs. Made in four sizes--10 feet, 15 feet, 20 feet and 30 feet long. Write for further information and prices.

Post your land against hunters. Land posters 10 cents per dozen postage paid. Send us your orders.

DANBURY REPORTER, Danbury, N. C.

**Big Holiday Opening This Week !**

**TOYS! TOYS! TOYS!**

FOR THE BOYS AND GIRLS

Holiday presents to suit grandma and grandpa, holiday presents to suit the best girl or boy. So come here and make our store your headquarters while in Winston. You are always welcome whether you buy or not.

**The J. W. Hester Co.**

DEPARTMENT STORE  
441-443 Trade St., WINSTON, SALEM, N. C.