

Will Pay
\$2.00 PER BUSHEL
 -For-
**GOOD CLEANED
 WHEAT**

Danbury Roller Mill
 Danbury, N. C.

**Fall Plowing
 The Orchard**

Raleigh, Dec. 21.—In orchards, where a winter cover crop is not grown," says W. A. Radsomier, Pomologist for the State College Department of Horticulture, "the ground should be broken with a plow any time from fall to spring. The middles should be broken deep, but care should be taken not to disturb the roots of the trees.

"There are several advantages of plowing early, the most important of which are: it increases the aeration of the soil, allows organic matter to decay before spring, kills insects that are hibernating in the soil over winter, and clears the surface of rubbish. Cover crops turned under in the fall will decay in time to furnish fertility for spring growth of trees.

"In the mountains, the plowing should not be done during cold winters, as frosts sometimes freeze more quickly on freshly plowed ground.

"Many orchards are plowed in the fall and not harrowed until spring. This method of fall plowing keeps the land from washing and also reduces the spring labor question there by checking the rush at that time of year. There is no added expense in fall plowing, as no extra harrowings or plowings are made. The work simply being transferred from spring to fall."

**American Cars More
 Popular In Europe**

European automobile manufacturers are following the lead of American engineers and body designers according to W. S. Knudsen, president of the Chevrolet Motor company, who recently spent six weeks abroad. Mr. Knudsen's tour of Europe included visits to several automobile shows.

"It is very evident that the English, French and Italian automobile manufacturers are intensely alive to American progress in modification and simplification of chassis lines," he said. "It also is evident that during the last few years they have followed American initiative in the improvement of automobile bodies both as to comfort and appearance. In fact, one of the largest automobile makers procured from the United States all of the tools and machinery used in building the bodies for his cars.

"The very small 'hot' type of car apparently is being favored in Europe. A great majority of the light automobiles made in Europe today are modeled as closely as possible to match the seating capacity of American light cars. Many of the European car builders, however, still use a relatively small motor with a low gear ratio and four speed transmission. This results in a gasoline economy which is important in Europe because of high cost of motor fuel. It also results in low taxes in England, because taxes there are based on horse power."—Ex.

Winter Health

Don't limit your winter activities to those popular indoor sports of fuming over a bulky furnace or a smoking stove and complaining about cold weather, but get a bit of open air exercise every day.

This is the advice of an authority on health, given with the idea that it will be timely because the weather forecasters are predicting that old King Winter will have in his royal train more than the usual assortment of ice, snow and wind.

According to the health experts, the white-whiskered, temperamental old codger will prove to be a harsh, disease-bearing tyrant or a big-hearted, health-giving benevolent monarch according to the way each person prepares to deal with his wares.

Exercise has long been recognized as a fundamental health requirement because to keep up the tone of the muscles and organs of the body with exercise is essential. Exercise, however, that involves the use of some mechanical device will not serve as a substitute for fresh air, proper diet, sufficient sleep and outdoor exercise.

There is no real substitute for muscular activity. Every person knows this to be a fact, but a comparatively small number follow a living code they know to be best for their health. Pills, drugs, stimulants and like treatments are not substitutes.

People who do not use their muscles more or less every day lose power and decrease their general efficiency.

The best form of exercise is recreation in the open air. The most important thing is for people to realize this is the very foundation of health and that it must be practiced.

**Banks of County Will
 Close For Holidays**

The banks of the county will be closed for the Christmas holidays Friday and Saturday, Dec. 22 and 23. The public will kindly arrange business transactions accordingly.

Respectfully,
 W. D. TOMPS, Cashier,
 N. E. PEMBER, Cashier,
 H. B. M'PHERSON, Cashier,
 H. H. DRAKE, Cashier,
 C. C. MADGE, Cashier,
 C. E. DAVIS, Cashier.

There are indications that Senators are getting ready for Dawe's attack when Congress convenes. Senator Harris of Georgia has had his tonsils removed.—Memphis Commercial-Appeal.

**NOTICE OF SALE OF REAL
 ESTATE.**

Under and by virtue of the power and authority conferred upon me by that certain deed of trust executed on the 1st day of May, 1925, by Manuel L. Hunter and wife, Bertha Hunter, said deed of trust recorded in the office of the Register of Deeds for Stokes county in Book 74 of mortgages, on Page 101, default having been made in the payment of the note therein secured, and demand having been made upon me to foreclose, I will, on the

**22nd DAY OF JANUARY,
 1926, at TWO O'CLOCK P. M.** sell to the highest bidder, for cash, on the premises, in Quaker Gap township, Stokes County, N. C., the following described real estate:

"Beginning at a black jack corner of Lot No. 3, in Morefield's line; thence West 16 chs. and 25 links to a small chestnut oak in Morefield's line; thence South 60 chains to corner in A. M. Stack's line; thence East with said line 16 chains and 25 links to corner of Lot No. 3 in said line; thence North 60 chs. to the beginning, containing 100 acres, More or less. Being the land conveyed by Quincey McKinney and wife to Joe Nelson, by deed recorded in office of the Register of Deeds in Stokes County, Book 61, on Page 314. Also a public cartway 14 feet wide to be open to the public travel of all persons."

This 14th day of Dec., 1925.
 CHAS. R. HELSABECK,
 Trustee.

NOTICE.

Having duly qualified as Executors of the last will and testament of E. M. Berry, deceased, notice is hereby given to all persons holding claims against the estate of the said deceased, to present them to the undersigned for payment, duly authenticated, on or by the 29th day of November, 1925, or this notice will be placed in bar of their recovery.

All persons indebted to said estate are respectfully notified to make immediate payment to us.
 This 18th day of November, 1925.

L. A. BERRY, Executor,
 R. O. Madison, N. C.
 J. H. BERRY, Executor,
 P. O. Walnut Cove, N. C. Route 3,
 N. O. Petree, Atty.

**SALE OF LAND FOR
 DIVISION.**

Pursuant to an order and judgment in the Special Proceedings action of Jobie A. Smith et al. Ex parte, of the Superior court of Stokes County, N. C., I will offer for sale for cash, at the court house in Danbury, N. C., on—

**MONDAY, 4TH DAY OF JAN.,
 1926.**

the following described tract of land adjoining the lands of C. F. Mills, Alfred Cook, Geo. W. Collins and others described as follows, to-wit:

Beginning on a dogwood corner, runs East on C. F. Mills' line 12 1/2 chains to a rock; thence South on new line 21 chains to a rock in Gibson's line; thence West on his line 1 1/4 chains to a black gum his corner; thence South 1 1/2 chs. to pointers Matthews' corner; thence West on his line 11 chs. and 32 links to a dogwood his corner; thence North 22 1/2 chs. to the beginning, containing 28 1/2 acres, more or less, and known as the Rebecca Jackson lands, and being the lands described in a deed from Joseph Smith and wife Barbara Smith to Thomas E. Smith and Jobie Smith, registered in book 70 at page 173 Register of Deeds Office, Stokes County, N. C.
 This 30th day of Nov., 1925.
 C. M. BERNARD,
 Commissioner.

Catarrhal Deafness

is often caused by an inflamed condition of the mucous lining of the Eustachian Tube. When this tube is inflamed you have a rumbling sound or imperfect hearing. Unless the inflammation can be reduced, your hearing may be destroyed forever.
HALL'S CATARRH MEDICINE will do what we claim for it—stop your system of Catarrh or Deafness caused by Catarrh.
 Sold by all druggists for over 40 Years.
 F. J. Cheney & Co., Toledo, Ohio.

Thirty-nine railroads run out of Chicago. We don't blame them.—The Thomas E. Pickerill Service.



NOTICE OF SALE OF VALUABLE REAL ESTATE.

State of North Carolina, Stokes County.

In the Superior Court.
 J. G. Bradshaw, Admr.,
 of J. E. Simmons, dec'd
 Against

Mary Simmons, Emmett Simmons, Edward Simmons, Samuel Simmons, Alpha Lawson and husband, Dillard Lawson, Robert Simmons and Elwood Simmons, heirs at law and devisees of the said J. E. Simmons.

Under and by virtue of an order of the Superior court of Stokes County, made in the Special Proceedings entitled "J. G. Bradshaw, Admr. of J. E. Simmons, deceased, vs. Mary Simmons, Emmett Simmons, et al the same being No. 875 upon the Special Proceedings docket of said court, the undersigned will on

**SATURDAY, THE 2ND DAY
 OF JANUARY, 1926.**

at the hour of two o'clock p. m., on the premises in Stokes County, North Carolina, offer for sale to the highest bidder for cash certain lots of land lying and being Quaker Gap township, Stokes County, N. C., adjoining the lands of W. L. Hall, J. G. Bradshaw and others and more particularly described as follows, to-wit:

LOT NO. 1.—Beginning at Hall's corner in Moore's Springs property line runs south 84 degrees 22 minutes east 23.25 chains to a stone J. G. Bradshaw and Pattle Bradshaw's corner in Moore's Springs property line; thence with Bradshaw's line south 16 degrees 39 minutes west 5.21 chains to a stone corner of lot No. 2 in Bradshaw's line; thence north 82 degrees 20 minutes west 19.17 chains to a stone at the branch; thence northwardly with branch to the beginning containing 10.25 acres.

LOT NO. 2.—Beginning at a stone in the branch corner of lot No. 1 runs south 82 degrees 20 minutes east 19.17 chains to a stone corner of lot No. 1 in Bradshaw's line; thence south 16 degrees 39 minutes west with Bradshaw's line 5.19 chs. to a stone corner of lot No. 3 in Bradshaw's line; thence north 81 degrees west with line of lot No. 3, 17 chains to a stone at the branch; thence with the meanders of the branch northwardly to the beginning, containing 9.65 acres.

LOT NO. 3.—Beginning at a stone in the branch corner of lot No. 2, runs south 81 degrees east with line of lot No. 2, 17 chains to a stone corner of lot No. 2 in Bradshaw's line; thence south 16 degs. 30 minutes W. with Bradshaw's line 2.75 chs. to a stone corner of lot No. 4; thence north 82 degrees west 17 chains to a stone at the branch, corner of lot No. 4, thence with the meanders of the branch northwardly to the beginning, containing 4.90 acres.

LOT NO. 4.—Beginning at a stone corner of lot No. 3, runs south 82 degrees east with line of lot No. 3, 17 chains to a stone corner of lot No. 3 in Bradshaw's line; thence south 16 degrees 30 minutes west 7 1/2 links with Bradshaw's line to a cherry tree, Bradshaw's corner; thence south 19 degrees 45 minutes west 3.90 chains to a stone in Bradshaw's line; thence north 79 degrees 30 minutes west 11.50 chains to a stone at the branch; thence with the meanders of the branch to the beginning, containing 6.37 acres.

Each lot will first be sold separately and then as a whole to ascertain in which way they will bring the most money.
 Sale subject to confirmation of court.

This 28th day of Nov., 1925.
 J. G. BRADSHAW,
 Administrator of J. E. Simmons, dec'd.
 J. W. Hall, Atty. for Admr.

Truth crushed to earth will rise again, but that signifies little.—Albany (Ore.) Herald.

The sun never sets on the British lag or the American tourist.—Atlantic City Press-Union.

Europe won't pay the installments on that war and we can't take it back.—Arkansas Gazette.

NOTICE.

Having duly qualified as executor of Joseph F. Meadows, deceased, late of Stokes County, N. C., all persons owing said estate are requested to make immediate settlement, and all persons holding claims against said estate are hereby notified to present the same duly authenticated to the undersigned for payment on or before the 15th day of Nov., 1925, or this notice will be placed in bar of their recovery.

Mizzpah, N. C., Nov. 14, 1925.
 GASTON W. MEADOWS, RURAL
 HALL BANK & TRUST CO.
 Executors of Joseph F. Meadows, deceased.

C. R. HELSABECK,
 J. D. HUMPHREYS,
 Attorneys for Executors.

**NOTICE OF SALE OF REAL
 ESTATE UNDER DEED
 IN TRUST.**

By virtue of the power of sale contained in a deed in trust executed to me on the 22nd day of May, 1913, by J. C. Wall and wife, recorded in the office of the Register of Deeds of Stokes county, N. C., in Book No. 55, at page 550, to secure the payment of a note therein recited in the sum of \$800.00, due to L. M. Gordon, to which reference is hereunto made, default having been made in the payment of said note at maturity, and the holder thereof having applied to me to foreclose the trust for the satisfaction of the same, I will sell at public auction, to the highest bidder for cash, at the court house door in Danbury, N. C., on—

MONDAY, JAN. 4, 1926.

at the hour of one o'clock p. m., the land conveyed in the trust deed, to-wit:

"A tract containing 217 acres, more or less, and being what is known as lot No. 2 in the partition of the lands of Wm. and J. C. Wall, which lot No. 2 was assigned to J. C. Wall as his half of the tract, called the "Allen Place." For boundary and description, reference is hereunto made to the plat and report of partition, recorded in the office of the Register of Deeds for Stokes county, N. C., in Book No. 57, pages 365 to 377, inclusive. See specially page 370 of said book No. 57." This 25th day of Nov., 1925.
 N. O. PETREE,
 Trustee.

**NOTICE OF SALE OF REAL
 ESTATE UNDER DEED
 IN TRUST.**

By virtue of the power of sale contained in a deed in trust executed to me on the 16th day of Sept., 1921, by R. L. Wilkes and wife, which is recorded in the office of the Register of Deeds of Stokes county, N. C., in Book No. 60, at page 269, to secure the payment of a note for \$2024, recited therein, default having been made in the payment of said debt at maturity, and the holder of said note having applied to me to foreclose the trust for the satisfaction of the debt, I will sell at public auction, to the highest bidder for cash, upon the premises in Stokes county, on—

WEDNESDAY, DEC. 30, 1925.

at the hour of 11 o'clock, a. m., the land conveyed in the trust deed, to-wit:

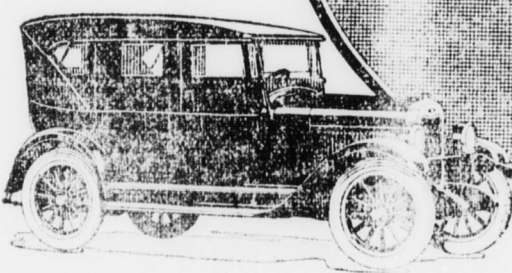
"Adjoining the lands of R. R. Boyles, P. R. Boyles and others, beginning in the center of the creek, Pink Boyles' corner, running South 83 1-4 degrees East, 20.60 chains to a stone in R. R. Boyles' line, then South, 4 1-2 degrees West, on Boyles' line, 21 chains to a post oak, (This line has one elbow in it.) Then North 81 1-2 degrees W. 20 1-2 chains to the center of the creek, thence up the creek as it meanders, 33.42 chains to the beginning, containing 43.90 acres, more or less."

This 25th day of Nov., 1925.
 N. O. PETREE,
 Trustee.

for Economical Transportation



Quality
All Season Comfort
 and **Low Cost**



The Touring Car

\$525

- Roadster - \$525
- Coupe - 675
- Coach - 695
- Sedan - 775
- Commercial Chassis - 425
- Express Truck - 550

ALL PRICES F. O. B. FLINT, MICHIGAN

STOKES MOTOR CAR CO.,

QUALITY AT LOW COST

Stormy weather holds no terrors for the owner of a Chevrolet touring.

This sturdy all-season car provides real comfort and snug protection against rain, wind, snow and sleet.

Its tightly fitting, carefully tailored curtains keep the outside cold from blowing in. Its big, wide doors are fitted with overlapping, weathertight door curtains that are rigidly supported on rods and swing with the doors.

No other car of equal price offers equal quality and equipment. None other combines Chevrolet's famous all-year-round economy with such all-year-round convenience and comfort. In summer it's a speedy, cool, open car; in winter, it keeps you warm and gets you there and back!

If you want all-weather protection plus quality construction at low cost—here is the car to own! Come in—see it today!
 WALNUT COVE, N. C.