

**New Auto Tags
To Go On Sale Jan. 1**

Winston-Salem, Oct. 24.—Automobile license plates for 1928 will be distributed by the Winston-Salem Automobile Club in practically the same territory as was controlled last year, W. T. Ritter and G. Wallace Hill announced Saturday morning, following their return from Raleigh, where they conferred with R. A. Doughton, commissioner of revenue. The main office will be at Winston-Salem and the club will have supervision of distribution at Mount Airy, Elkin and North Wilkesboro.

Commissioner Doughton has made no decision as to when new plates will go on sale, but it is believed that the sale period will be much shorter than heretofore. In the past, the new plates have gone on sale about a month before they were required to be displayed but the commissioner has intimated that the time may be reduced this year.

NO EXTENSION.

It has been announced, however, that there will be no extension of time in which to obtain licenses. For the first time in its history, North Carolina is requiring the display of new licenses on January 1, instead of July 1. The commissioner has emphasized that no car will be permitted to operate after January 1 unless it carries the 1928 plate.

Since June 1, this year, the local office has distributed 26,500 plates, and this number will be increased somewhat before the end of the year.

The new license plates, to be used during 1928, have white letters and numbers, on a green background.

NOTICE—I will offer for sale on **NOVEMBER 5, 1927**, at 10 o'clock, a. m., my corn, fodder, shucks and farming tools. Wagon, hogs, one milk cow and some house and kitchen furniture. **F. M. CLARK,** Lawsonville, N. C. 2ws

FOUND—Female hound dog black with white legs. Owner can get same by paying for advertising and feeding. **OTIS ESTERS,** Danbury, N. C.

NOTICE OF RE-SALE OF REAL ESTATE.

Under and by virtue of an order, made by his Honor T. J. Shaw, Judge of the 12th Judicial District, in the case of W. P. Bondurant, et al, vs. Addie Moser, et al, appointing the undersigned commissioner, to re-sell the lands hereinafter described I will on—

SATURDAY, NOV. 12, 1927,

at the hour of 2 o'clock, p. m., on the premises offer for sale to the highest bidder, for cash, that certain tract of land, lying and being in Stokes county, N. C., and more particularly described and defined as follows, viz: Beginning at a black oak stump a few steps below the mouth of the big branch, running N. on Mabe's line 43 chains to a post oak stump, his corner on the side of the road leading to Mabe's plantation, thence north 30 degrees west with said road, leaving road at 7 chains, crossing the mountain road, 10 1-2 chains to a stake in Smith's line, thence south 51 degrees west on said line 20 1-2 chains to a post oak near the head of a hollow, thence north 40 degs. west on said line 21 1-2 chains to a rock, 1-2 chain east of Peter Moore's corner, thence north 20 degs. west, on a new line 12 chains to a holly bush on the bank of the branch near a still place, J. H. Covington's corner, thence down said branch and with said Covington's line 26 chains to a stake, his corner, thence south 60 degrees west 3 1-2 chains to a chestnut stump his corner, south on his line 15 1-2 chains to a stake at the big branch, corner, of J. H. Covington's home tract of land, thence down said branch 29 1-2 chains to the beginning, containing 150 acres, be the same, more or less. Save and except from the above boundary 58 acres conveyed by Joel Bondurant and wife to R. G. Bondurant for boundary of same see book 66, page 239, in the office of Register of Deeds of Stokes County, N. C., and 7 3-4 acres conveyed by Joel Bondurant and wife to Edward Mabe, for boundary of same, see book 48, page 598, office of Register of Deeds of Stokes

county, N. C., leaving now 84 1-4 acres of the original tract of 150 acres.

There is a good dwelling house and other buildings on the said 84 1-4 acres. There has recently been built a public road leading from the State highway near Clemmon's Ford bridge, which intersects with a road leading to this tract of land.

Fifteen percent of the price bid on this land by the last and highest bidder is to be paid to the undersigned on the day of sale. If the sale is not confirmed or if a decreased bid is put on the price bid this money will be paid back.

This October 5th, 1927.

J. W. HALL, Commissioner

NOTICE.

State of North Carolina, Stokes County.

In the Superior Court, Before the Clerk.

E. W. Carroll, et al vs.

W. T. Carroll, E. F. Carroll, G. F. Hicks, Martha Lewis Crowther, et al.

NOTICE.

The defendants, E. F. Carroll, W. T. Carroll, G. F. Hicks, Martha Lewis Crowther, will take notice that a special proceeding entitled as above has been commenced in the Superior Court of Stokes County, North Carolina, for the purpose of selling for partition a tract of land situate, lying and being in Danbury, Meadows, Yadkin and Quaker Gap townships, Stokes county, State of North Carolina, on the waters of Indian Spring, adjoining the lands granted to Shober and others, containing 552 1-2 acres, more or less, and it being the lands granted by the State of North Carolina to D. V. Carroll, Abram Lewis and Minnie J. Carroll, which grant is recorded in the office of the Register of Deeds of Stokes County, State of North Carolina, in Book No. 31, pages 65 to 67 inclusive, and the said defendants, W. T. Carroll, E. F. Carroll, G. F. Hicks, Martha Lewis Crowther, will further take notice that they and each one of them is required to appear at the office of the Clerk of the Superior Court of Stokes County, North Carolina, on the third day of November, 1927, and answer or demur to the petition on file in said special proceeding, or the petitioners will apply to the court for the relief demanded in said petition.

This Oct. 3rd, 1927.

A. J. FAGG, Clerk of the Superior Court of Stokes County, N. C. **J. D. HUMPHREYS,** Attorney for Plaintiffs.

NOTICE TO CONTRACTORS.

Sealed bids will be received by the undersigned up to Oct. 31st, 1927, at the hour of one o'clock P. M., for the construction of public school building to be erected at Sandy Ridge, Stokes county, North Carolina, the plans and specifications for which are on file in my office, and can be seen by prospective bidders, to be returned to J. C. Carson, Germantown, N. C. upon completion of building. The plumbing and heating installation will be let under separate contract. The electrical work will be included in the general contract. Deep well, pump and tank or water system will be let under separate contract. Certified check of \$2,500.00 must accompany each bid.

The right is reserved to reject any and all bids.

Germantown, N. C., Oct. 14, 1927.

J. C. CARSON, Supt. Public Instruction, Stokes County.

TIRES AT WHOLESALE
Save the Middleman's Profit on Guaranteed Tires

30x3 1-2 Cords	\$5.75
30x3 1-2 Cooper Cords ..	\$7.00
30x3 1-2 Cooper OS Cords ..	\$8.00
29x4.40 Balloon Cords	\$7.00
29x4.40 Cooper Balloons	\$9.50

Four Stores in Winston-Salem
ROBERTS HARDWARE COMPANY

Corn in Alexander county planted on a lespedeza sod is returning much higher acre yields than where no lespedeza was planted.

NOTICE OF SALE UNDER EXECUTION.

State of North Carolina, Stokes County.

In the Superior Court, The Bank of Stokes County, plaintiff,

against

John A. Young, defendant.

By virtue of an execution directed to the undersigned from the Superior Court of Stokes county, in the above entitled action, I will on—

MONDAY, NOV. 7TH, 1927, at one o'clock, p. m., at the court house door of said county, sell to the highest bidder for cash, to satisfy said execution, the equitable and legal rights of redemption which the said John A. Young, the defendant, has in the following described real estate, to-wit:

First Tract:—Beginning at a ridge, Robertson's corner, runs north 86 degs. w. 103 poles to a stone, Joyce's corner, thence S. 7 1-2 degs. west 32 poles to a stone, thence S. 5 degs. west 162 poles to a spring, thence north 57 degs. east 14 poles and 17 links to a small hickory, Brown's corner, thence N. 5 degs. N. 81 poles to a white oak, Robertson's corner, thence N. 86 degs. w. 40 poles to a stone, thence N. 6 degs. west 17 poles to a poplar on west side of road, thence, N. 76 degs. 10 poles and 5 links to a black gum, thence S. 47 degs. N. 8 poles to a stone, thence N. 5 degs. 55 1-2 poles to a stone, thence N. 35 degs. west 11 poles to a stone, thence N. 15 degs. west 19 poles to the beginning, containing 146 9-10 acres, more or less. See book 67, page 63, office of Register of Deeds of Stokes county, N. C., for a full description of said land.

Second Tract:—Being that part of the following boundary of land known as the W. M. Flynt division of the lands of W. M. Flynt and W. J. Flynt, and being that part lying on the east side of Buck Davis' Ford road, bounded as follows: Beginning at a southwest corner of lot of D. O. Dick's heirs, also east corner of W. J. Flynt pointers, thence w. 87 1-2 deg. w. 34 chains and 75 links to pointers, thence N. 4 degs. 18 1-2 chains to a white oak, thence 86 degs. w. crossing two branches 16.20 chains to a white oak on a hill side, thence N. crossing two branches 23 chains and 17 links to pointers, southwest corner of W. J. Flynt, Lot No. 4, 48 chains and 15 links to a stone on the west edge of Davis' Mill road, thence N. E. along said road, to the beginning, containing 184 acres, more or less. Will sell only that part of the above boundary, lying on the east side of Davis' Mill road, consisting of about 80 acres. For full description of said land see book 56, page, 366, office of Register of Deeds of Stokes county, N. C.

This Sept. 23rd, 1927.

J. FRANK DUNLAP, Sheriff of Stokes County.

NOTICE OF SALE OF VALUABLE FARM LANDS.

By virtue of a decree of the Superior court of Stokes county, rendered by A. J. Fagg, C. S. C., in the Special Proceedings entitled "Everett Martin, et al, vs. Annie Riererson, et al," appointing the undersigned a commissioner, to sell the hereinafter described lands, I will offer the same for sale on the premises of the first named tract, on—

SATURDAY, OCT. 29th, 1927,

at the hour of 2 o'clock, P. M., at public auction to the highest bidder for cash, which lands lie in Peters Creek township, Stokes county, N. C., adjoining the lands of Grover Shelton, T. W. Tilley, Eugene Ray and others, and being particularly described by metes and bounds as follows:

TRACT NO. 1:—Beginning at a stone on the south side of the Mt. Airy road, runs N. 55 degs. west 2 poles to the center of old road, thence with old road the following courses: South 84 1-2 degs. west 12 poles, thence south 86 degs. west 18 poles, thence south 56 1-2 degs. west 9 3-5 poles to an iron stake Ray's corner, thence north 17 degs. west, crossing new road, 9 1-5 poles to a dogwood, Ray's corner, thence north 86 3-4 degs. west 57 poles to an old poplar stump, thence north 5 1-2 degs. east 62 and 3-5 poles to a white oak, blown down, thence south 83 1-2 degs. east on line of lot No. 2, 65 1-2 poles to a stone in Ray's line, thence with his line S. 5 degs. W. 7 poles, thence south 53 degs. east 12 poles to a poplar, thence south 1 deg. west 24 poles to stone, Ray's corner, at ridge road, thence with said road the following courses: South 73 1-2 degs. east 4 1-2 poles, thence south 54 degs. east 8 poles, thence south 34 degs. east 8 poles, thence south 40 degs. east 9 poles, thence south 21 degs. west, crossing new Mt. Airy road 3 1-5 poles to the beginning, containing 30 acres, more less, which tract is subject to the life right of Mrs. Fannie Martin, widow of Gideon Martin, deceased, who is 73 or 74 years of age, and will be sold subject to her said life right in said lands.

TRACT NO. 2:—Beginning at center of creek, corner of Lot Number 3, in Shelton's line, runs up the middle fork of Peters Creek, the following courses: South 65 degs. east 31 poles, thence south 83 1-2 deg. e. 19 1/2 poles, thence south 45 1-2 degs. east 9 poles, thence south 16 degs. E. 28 2-5 poles to the center of the creek, Ray's corner, near an old mill, thence south 5 degs. N. W. on Ray's line 60 poles to a stone, northeast corner of lot No. 1, thence N. 83 1-2 degs. west 90 poles to center of Peters Creek, corner of lot No. 3, thence up said creek, the following courses, north 30 degs. east 6 4-5 poles thence north 24 degs. east, 12 poles, thence north 37 1-2 degs. east 22 poles, thence north 61 degs. east, 10 poles, thence N. 6 1-2 west 19 poles, thence N. 35 degs. 4 poles, thence north 5 1-2 degs. east, 20 poles, thence north 44 1-2 degs. east 6 poles, thence 14 degs. east 9 poles to the beginning, containing 41 2-5 acres, more or less.

TRACT NO. 3:—Beginning at center of Peters Creek in Tilley's line corner of lot No. 2, runs north 83 1-2 degs. w. 14 poles to a stake, thence north 6 1-2 degs. east 10 poles to a stake, Tilley's corner, thence north 83 1-2 degs. west 56 degs. west 17 poles, thence N. 86 degrees East, 9 poles, thence up an old ridge road the following courses: North 4 1-2 poles to a stone, Hall's corner,

36 degs. east 13 poles, thence north 22 degs. east 7 poles, thence north 34 1-2 degs. east 32 poles, thence 43 1-2 degs. east 10 poles, thence north 30 degs. east 8 poles, thence N. 21 degs. east 8 poles, thence north 30 degs. east 7 1-2 poles to a maple, thence south 84 1-2 degs. east 26 poles to a stone, thence north 70 degs. east 8 poles to a stake at head of a dreaan, thence down the dreaan, the following courses, south south 86 degs. east 9 poles, thence south 49 degs. east 12 poles, thence south 65 3-4 degs. east 11 poles to the center of Peters Creek, thence down said creek the following courses: South 14 degs. west 9 poles, thence south 44 1-2 degs. west 6 poles, thence south 5 1-2 degs. west 20 poles, thence south 36 degs. west 4 poles, thence south 6 1-2 degs. east 19 poles, thence S. 61 degs. west 10 poles, thence south 37 1-2 degrees West 22 poles, thence south 24 degs. west 12 poles, thence south 39 degs. west 6 4-5 poles to the beginning, containing 45 and 3-8th acres, more or less.

TRACT NO. 4:—Beginning at a stone in old road corner of school house lot and runs S. 6 degs. west 13 4-5 poles to a stone, thence north 68 degs. west 6 poles to a stake corner of school house lot, thence S. 5 degs. west 44 3-5 poles to a poplar, thence south 4 1-4 degs. west 65 1-5 poles to a stone, thence south 85 degs. on Dodson's line 52 4-5 poles to center of branch, thence on said branch the following courses: North 37 1-2 degs. east 17 3-5 poles, thence north 69 degs. east 16 poles, thence north 72 degs. 8 poles, thence 25 degs. east, 13 poles, thence north 61 degs. east 2 4-5 poles to Merritt's corner, thence N. 5 degs. east 75 poles to a post oak on north side of road, thence with old road, north 74 1-2 degs. west 20 1-2 poles, thence east 76 1-2 degs. 24 poles, thence north 76 degs. west 43 3-5 poles to the beginning, containing 61 acres, more or less.

Sale subject to confirmation of the court.
This Sept. 26th, 1927.
J. D. HUMPHREYS, Commissioner

NOTICE.

North Carolina, Stokes County.

In the Superior Court.

Sam Wilson, Lindo Wilson, et al, vs.

Ellis Wilson and Oscar Wilson.

Notice Service by Publication.

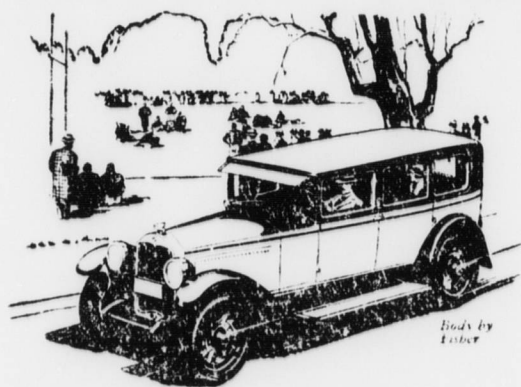
The defendant, Ellis Wilson, above named will take notice that an action entitled as above has been commenced in the Superior court of Stokes county for partition of the lands described in the petition by a sale thereof, for division among the tenants in common, the defendant being entitled on an undivided one seventh interest therein, the defendant will further take notice that he is required to appear before the Clerk of said court at his office in Danbury, North Carolina, on or before the 16th day of November, 1927, and answer or demur to the complaint in said action, or the plaintiffs will apply to the court for the relief demanded in the complaint.

This Sept. 26th, 1927.

A. J. FAGG, Clerk Superior Court.

Tom Tarheel says it is no use to spread lime and expensive fertilizer over a field and then let the rains wash it away during the winter. He has begun terracing and planting winter crops.

WHEN BETTER AUTOMOBILES ARE BUILT, BUICK WILL BUILD THEM



There's no "time out" for Buick

The referee's whistle shrills . . . "time out!" . . . The game halts, pending a player's return to the "line-up".

When you attend the big football games this year, notice the predominance of Buicks—for men and women who like action, like Buick. And hundreds of thousands of Buick owners can testify that there is no "time out" for Buick.

Sedans \$1195 to \$1995 Coupes \$1195 to \$1850 Sport Models \$1195 to \$1525

All prices f. o. b. Flint, Mich., government tax to be added. The G. M. A. C. financing plan, the most desirable, is available.

BUICK for 1928

LINDSAY FISHEL BUICK COMPANY
Winston-Salem, N. C.