

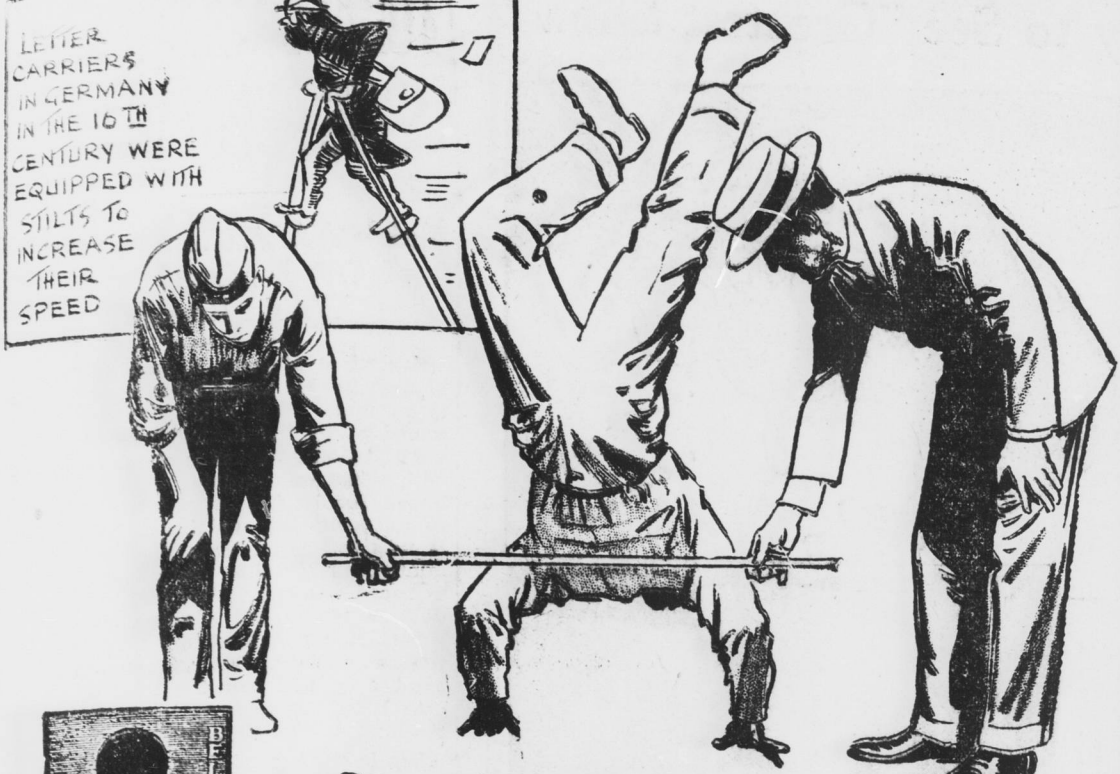
SCOTT'S SCRAPBOOK

by R. J. SCOTT

THE OLD HOME TOWN

Registered U. S. Patent Office

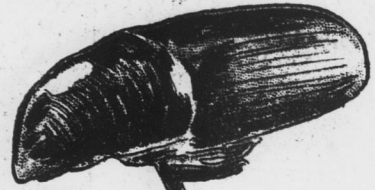
by STANLEY



OSCAR BRADLEY, AN EQUILIBRIST, WHILE DOING A HAND STAND BALANCE PERFORMS A HAND STAND JUMP OVER A BAR HELD 17 INCHES FROM THE GROUND



BELGIAN STAMP FOR 1932 STRATOSPHERE FLIGHT



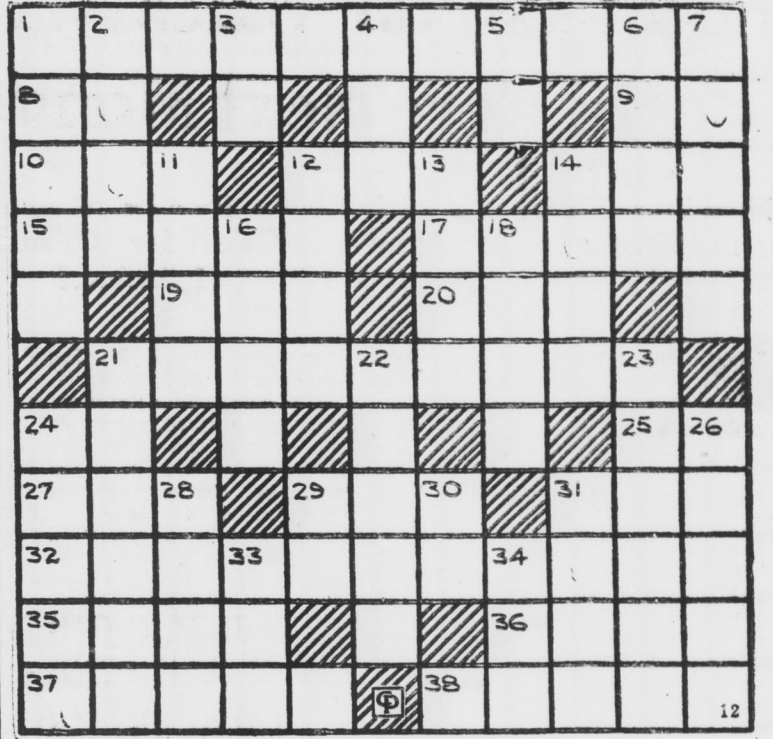
THE ELM BARK BEETLE (DUTCH ELM DISEASE CARRIER) IS FAST BRINGING THE ELM TO EXTINCTION IN THE UNITED STATES

Copyright, 1935, by Central Press Association, Inc. 7-14



Copyright, 1935, by Central Press Association, Inc. 7-13-35

CROSS WORD PUZZLE



**ACROSS**

1-Pertaining to earliest human culture  
2-In the year of the reign (abbr.)  
3-Separation (prefix)  
10-Very small  
12-Extra  
14-Lair  
15-Dirty  
17-Pertaining to Goddess Isis  
19-Author of "The Raven"  
20-Greek letter  
21-Interbreed

24-Note of the scale  
25-A state of the U. S. (abbr.)  
27-Resort town in Hesse-Prussia  
29-One of receptacles for a pair of scales  
31-Grain box  
32-Excluding  
35-Castor's mother  
36-Any scent  
37-Stairs  
38-Suspicious

16-Kind of small mug  
18-Provoke  
21-One of Shake-speare's plays (symbol)  
22-Silly  
23-Girl's name  
24-Touches

26-Enraged  
28-The slope of a hill  
29-Greek letter  
30-Sodium (symbol)  
31-To wait for  
33-Chart  
34-A part of the foot

**DOWN**

1-Chess men  
2-A region  
3-In (prefix)  
4-A boy  
6-Forward  
7-Strong girth for a saddle

11-Catch sight of  
12-Hearing in open court (law)  
13-Expired  
14-President of Mexico (1854-1911)

**Answer to previous puzzle**

E	A	R	T	H	C	H	I	N	K
D	E	B	O	O	T	E	D	E	N
I	N	P	U	R	E	A	R	E	
F	O	R	R	O	O	F	O	L	
Y	O	U	R	Y	O	R	K	L	
K	E	E	N	M	A	R	S		
F	S	E	E	S	Y	A	M	S	
A	H	K	I	N	D	N	U	N	
W	O	E	L	A	R	D	G	O	
N	O	E	L	G	O	A	P	U	
S	T	R	A	Y	P	L	A	N	T

THIMBLE THEATRE

Starring

POPEYE

Wimpy's Moral Support

By E. C. Segar



BIG SISTER

by LES FORGRAVE



ETTA KETT

by PAUL ROBINSON



THE GUMPS—JUST LIKE OLD TIMES



Contract Bridge

**GAME HANDS PASSED OUT**

THE GREAT danger in making opening bids either third or fourth hand is that opponents may have passed holdings which may go game, just as was the case with the deal shown. On the other hand bidders should avoid passing out holdings capable of going game, making part game score or collecting a penalty from strongly bidding opponents. Individual thought, as well as the best general rules of procedure, should govern bidding or passing out holdings.

♠ 10 6  
♥ 8 6  
♦ 8 2  
♣ A K Q 7 8 8 2

None ♠ Q 9 7 4  
J 10 9 5 ♠ A K Q 7  
3 2 ♠ 4  
A K 7 4 ♠ S. ♠ 10 9  
J 9 4 ♠ 8

♠ A K J 8 5 3 2  
None ♠  
J 6 6 8 ♠  
10 5 ♠

The best general rules for making opening bids either third or fourth hand are: Open on two and one-half quick tricks, if strong in two major suits; open upon three quick tricks if strong in only one major suit; open upon three and one-half quick tricks if weak in both major suits. Unless partner is trickless the foregoing strength should prevent an opposing secondary bid from going game.

South, West and North passed showing their single powerful suits, as they should have done. East also passed as fourth hand, on the ground that he did not have three and one-

Half quick tricks. Unless things were going badly for me I would have made an opening bid of 1-Heart, although only two quick tricks are held. The powerful spade and diamond suits would have decided me to bid. West hardly could be trickless, without a bid from either opponent.

Had East opened the auction with 1-Heart, South's best plan would have been an overcall of 4-Spades, hoping to shut-out West, but the latter certainly would have bid 5-Hearts, possibly 6-Hearts, which East really could have made.

Had East made an opening bid of 1-Heart, any attempt to overcall his legitimate small slam contract would have been properly punished, whether South bid spades or North bid clubs. Quite probably there would have been lively bidding of both black suits by opponents. Of course an opening bid by East might not have resulted so happily, but any small score, whether part game or penalty of opposing overcalls would have been better than a blank for passing out his hand.

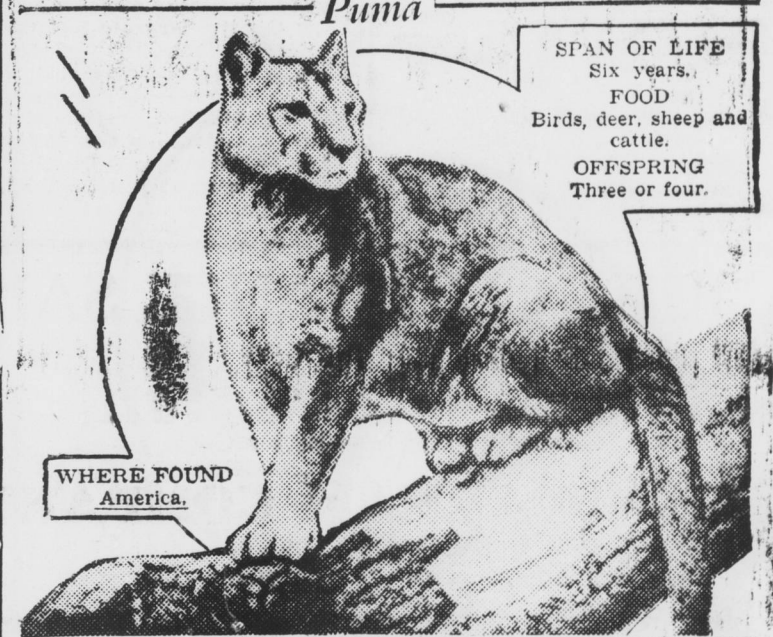
♠ A Q J 10 8  
7  
♥ A K 9 8 7 4 3  
None ♠  
♦ 6  
4 3 ♠  
Q J 10 ♠  
J 10 9 8 ♠  
7 3 2 ♠

♠ 9 8 7 6  
4 2 ♠  
Q 9 8 5 ♠  
None ♠  
K Q ♠

♠ K  
♥ A K J 10 6 2  
♦ 6 5 2 ♠  
A 5 4 ♠

Before Monday see what South can make at hearts against any defense.

NATURE PRESENTS



**Puma**

SPAN OF LIFE Six years.  
FOOD Birds, deer, sheep and cattle.  
OFFSPRING Three or four.

WHERE FOUND America.

PHYSICAL FEATURES Five feet long, two feet six inches high; thin body, deep and flat; broad head with small mouth and prominent ears; thick legs and claws overgrown with hair; fur thin in warm climate, thick in cold. Color—red, dish or gray brown with under parts lighter.

TODAY'S DRAWING LESSON

Because he never attacks a human being except by mistake, the puma, or mountain lion, is called "the friend of man". In the torrid heat of South America or the bitter cold of North America the puma is equally at home. He is intelligent and extremely agile, and there is no game except a full-grown bear or buffalo that he will not attack and kill. An excellent climber, he chases monkeys from tree to tree. In spite of poison, traps and shooting and a premium of \$15 on his head because he commits such havoc among horses, cattle and sheep, the puma continues to increase.