

1823—Ernest Renan, French scholar-philosopher, born. Died Oct. 12, 1892.

PHOTOPLAYS

**STEVENSON**

THEATRE—HENDERSON, N. C.

TOMORROW  
ZANE GREY'S  
"DRIFT FENCE"  
—with—  
Tom Keene

—Extra—  
"THE FIGHTING  
MARINES"

Sponsored by Boy Scout Troop 30

FREE

A Shirley Temple Cut-Out Doll  
To all children attending the  
Matinee.

LAST TIMES TODAY

"ROSE MARIE"  
—with—  
JEANETTE MacDONALD—  
NELSON EDDY

**STEVENSON**

Saturday Night—11 P. M.  
Sunday Night—9 P. M.

ASK YOUR DOCTOR! TELL

YOUR FRIENDS!



All you need is a darn good laugh!  
**TO BEAT  
the BAND**



With copies of  
song hits!  
With  
**HUGH HERBERT  
HELEN BRODERICK**  
Oh yes! "Top Hat"  
Roger Pryor, Fred  
Keating, Eric Blone,  
Phyllis Brooks.

**OUTLOOK HOPEFUL  
ON MOUNTAIN ROAD**

**Highway Commission Will  
Not Submit to Exhorbi-  
tant Prices**

Daily Dispatch Bureau,  
In The Six Walter Hotel,  
By J. C. BASKERVILLE,  
Raleigh, Feb. 28.—The milk in the  
coconut with regard to the difficul-  
ties being experienced by the State  
Highway and Public Works Commis-  
sion and the Department of Conserva-  
tion and Development in getting a  
right-of-way for the toll-free road to  
the top of Mt. Mitchell is that the cor-  
poration owning the two present toll  
roads know they are going to be  
ruined and their roads made worth-  
less as soon as the new park-to-park  
highway is completed, with the result  
that they are trying to unload these  
roads on the highway commission at  
exorbitant prices before the parkway  
is completed. At least, this is the op-  
inion of several who attended the  
conference in Marion this week be-  
tween the special committee of mem-  
bers of the highway commission and  
representatives of the owners of the  
toll roads. Chairman Capus M. Way-  
nick, of the commission, who is also  
chairman of the special committee  
with full power to act, declines to  
say anything about the meeting, oth-  
er than that he is hopeful that some  
way may be found to acquire part of  
one of the roads to the top of Mt.  
Mitchell.

Lease Is Obsolete.  
The brick in the machinery that is  
blocking the speedy acquisition of on-  
ly a few miles of road from Balsam  
Gap to the summit of Mt. Mitchell, is  
the lease which the corporation own-  
ing the Wilson road holds on a right-  
of-way only 1 1/2 miles long running  
through State-owned property, and  
granted to this corporation some ten  
years ago by the Department of Con-  
servation and Development, accord-  
ing to those who have analyzed the  
situation. This is regarded as creat-  
ing a rather paradoxical situation  
now, since at the present time it is  
the Department of Conservation  
which is urging the highway depart-  
ment to take immediate action in  
opening a free road to the summit of  
Mt. Mitchell so it will not lose a Civilian  
Conservation Corps camp, which the  
War Department and National  
Park Service have agreed to locate  
there to develop the 1,200 acres own-  
ed by the State into a State park.  
For if the owners of the Wilson road  
did not hold this lease through the  
State land from the conservation de-  
partment, the highway department

**Moon Theatre**

TODAY — TOMORROW  
"THE NEW ADVENTURES OF  
TARZAN"  
Buck Jones—in  
"DESERT VENGEANCE"  
Comedy  
Admission ..... 11 and 21c

**13 Cars Derailed—No One Hurt**



Although described as the worst wreck in its history in this section, no one was hurt when 13 cars of a southern freight were derailed at Haw River, N. C. As the caboose remained on the tracks, trainmen were only slightly shaken. One car jumped the rails and took the others with it. Tracks were torn up for a mile.

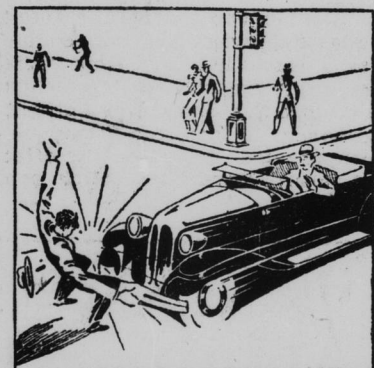
**DON'T 'JUMP' BELL**

The track man who tries to beat the gun usually loses the race. The same is true of the horse who breaks the barrier. And likewise of the fellow who tries to beat the red light.

It is a poor practice, jumping the light signal before the red has turned to green. It is also a risky business to speed up across an intersection to get across before the green light has turned red.

Red lights mean stop and green lights mean go. The amber light means to get ready to stop or to get ready to go. It is excellent judgment to do just what the signal light instructs one to do.

Many collisions are caused by the fellow who approaches an intersection as the green light is fading out. Instead of stopping, he speeds up, with the hope that he will be across before the red light is on. Often he speeds into a first-rate smash up with the man who is obeying the light signals. Or he may meet another injudicious driver—the fellow who is unwilling to wait until the green light is actually on—and the two may meet in the intersection, smash their cars, their legs and necks, and even worse, some innocent person or persons who may be riding with them.



The motorist should realize that red lights and green lights were invented not to restrict his freedom but to save his life and his property. The light signals should be obeyed. If they are not obeyed, they may work more harm than good. Jumping lights is a dangerous practice. It is better to wait a few seconds and get there than to be piled up in the middle of an intersection. And the few seconds saved by jumping the bell mean nothing anyway. The fellow who crosses town jumping bells will not get there more than a few minutes ahead of the fellow who obeys the rules—and he may not get there at all!  
Drive Carefully—Save a Life.

could proceed with opening the present road as a free road and the entire matter would be settled.

But under this lease, the owners of the Wilson toll road still have control of this 1 1/2 miles of road leading to the summit for five more years. And at the meeting in Marion this week, they intimated since this 1 1/2 miles of road was essential to preserve the value of the entire road, which they agreed to turn over to the State for \$50,000, that they could not agree to give up their lease on this 1 1/2 miles for less than \$50,000, according to some of those who were at the meeting.

Won't Submit to Hold-Up.  
The highway department has absolutely no intention of paying any one \$50,000 for a 1 1/2 mile long toll road when it only wants two or three miles of this road, nor does it intend to pay \$50,000 for a lease on 1 1/2 miles of the road, it was indicated in no uncertain terms by highway officials today, although none of them was willing to be quoted directly. It was further pointed out that the highway department can build an entirely new road for much less than \$50,000 which will serve its purposes just as well, if not better, and that by so doing the entire Wilson toll road will be rendered absolutely useless to its owners. The one objection to build-

ing a new road is that it would make an additional scar on the mountain and thus reduce its scenic value.

Quick Action Necessary.  
But for the fact that quick action is necessary in order to insure the location of the CCC camp on Mt. Mitchell, the situation would not be so serious and all the time necessary could be had for the poker game which would have to be played between the highway department and the owners of the Wilson road. There are indications however that the Wilson interests are now trying to capitalize on this need for quick action in order to get a fat price for their lease and right-of-way.

**Spring Upturn May Halt  
Current Business Lulls**

(Continued from Page One.)

motor factories, steel operations increased from 46 per cent of capacity in early January to 52 per cent at the present time. I am very much encouraged by this gain even though it is less than seasonal. It means that the loss of business from motor makers is being offset by demand from other sources—notably railroad equipment and construction concerns. Is this evidence that recovery is broadening out into the capital goods industries?

3. BUILDING: Construction should be the strongest influence on Spring business. Building permit figures are continuing the sharp upward trend which began last May. Present vol-

ume is more than double a year ago. Costs are stable, rents are up five per cent, and government financing is doing its bit. The real question about 1936 building is: Can people afford to buy both new homes and new automobiles?

4. RAILROADS: Carloadings have been giving an excellent account of themselves. The total for the past week for instance is well above a year ago and is the best figure for this season in several years. Exceptionally cold weather with heavier shipments of coal has had a good effect. Although merchandise loadings have fallen off, railroad net income is showing signs of strength for the first time in several years. Will this increase continue?

5. UTILITIES: Figures covering the consumption of electric power are becoming one of the nation's standard barometers of business activity. Weekly reports show that consumers are using more electricity today than ever before in the history of the industry. This is due to two factors: (1) sharp improvement in industrial activity since 1933 and (2) tremendous gains in the sale of household appliances. Does the record-breaking sale of electric power mean a new expansion program for the utility industry in the near future?

6. LABOR: Employment totals have slipped backward recently, but are still well above the 1935 level. Payroll totals, as has been the case throughout the recovery period, have been increasing faster than employment. Unemployment is still our most serious problem. Strikes are abnormally low. Are labor troubles now due for a pick-up with the rising cost of living the main bone of contention?

7. RETAIL TRADE: 1935 Christmas business was the best since 1930. January clearance sales were also brisk. Since then, however, retail trade has been sagging. The combination of the AAA decision, storms, and cold weather have taken their toll. So retail trade has declined roughly five per cent and is now only slightly above a year ago. However, orders are piling up. Can merchants count upon an earlier Easter this year to make up for the February quietness?

8. BANKING: Commercial loans, after a brief pick-up last Fall, have declined ever since, and are again at their depression low. Deposits, on the other hand, have maintained the steady upward climb which started after the bank holiday. As a result, credit reserves are at the highest level in our history. Does not this moderate volume of loans mean less danger from a sharp curtailment of credit?

9. TEXTILES: There has been some recession in cotton and silk mill activity since Christmas, the uproar over processing tax refunds being one of the big factors. Within the past fortnight some improvement in cotton shipments has been noticeable and the industry is ready for a sharp seasonal pick-up. Meanwhile, woolen mills have been operating at peak capacity and they still have a big block of orders on hand to be filled this Spring. In spite of this spotty situation, will the bonus payments lead to general prosperity in the textile field?

10. STOCKS AND COMMODITIES: Commodity prices reached a new recovery high early in January but have been sliding off since then due to the AAA decision and receding business activity. Stock prices, however, have been moving ahead vigorously. Volume of stock trading is the highest in several years and prices are at a

new peak since the Spring of 1931. In gauging intermediate business swings, the stock market is seldom wrong. Therefore, will business soon pick up, or must the market soon recede?

CONCLUSION: The above thumbnail sketches cover most of the important business indicators and many of the critical questions of the hour. The Barometer is made up of 57 different barometers and the sum total shows a net loss of five per cent since the recovery high of late December. The current volume of business, however, is 52 per cent above the

depression depths. I advise all business men and investors who are bearish on business today to turn back to a few years ago and study conditions as they existed then. The improvement in fundamentals which has taken place in the last five years can only mean: Better business lies ahead, even though there may be intermediate periods of hesitancy, particularly during a presidential election year. In spite of the current recession, I still believe that 1936 should be a better business year than 1935.

**HERE ARE THE THREE ESSENTIALS  
MEN LOOK FOR IN A WHISKEY**

**TASTE QUALITY and LOW PRICE**  
Get all three in  
**WINDSOR**  
STRAIGHT BOURBON WHISKEY  
75¢ PINT \$1.25 for 4/5 Quart

Windsor Straight Bourbon Whiskey  
Fenn-Maryland Division, National Distillers Products Corp. • Executive Offices: New York City

**Insurance to Fit  
Your Needs**

is the only kind worth having. Your policies should be drawn by experts to give adequate coverage.

Policies issued through the Citizens Bank reflect not only the successful experience of 41 years in the insurance business, but also the experience of some of the largest and strongest companies in this field.

Every form of insurance  
—except Life.

**Citizens Bank & Trust  
Company**

Insurance Department  
Henderson, North Carolina.

**Monday, March 2, 1936**

Will Be Pay Day for  
Shareholders in Our  
18th Series

Holders of shares in this series are invited to call at this office on or after the above date and receive

**\$25,900.00**

In Checks and Cancelled  
Mortgages

Here We Wish To Call Attention to Our  
**New 31st Series**

Payments to Begin the First  
Saturday in April.

Make application now for shares in this new series and you, too, can have a nice cash reserve or a cancelled mortgage when the series matures.

**Henderson Building &  
Loan Association**

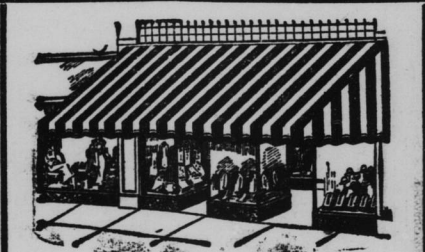
Irvine B. Watkins, Pres. Al. B. Wester, Secy.

The Ice Box  
That's A  
"Life Box"

To a certain ice box in our prescription department come doctors, their assistants, and nurses. Theirs is a serious mission, for in its frigid depths are no meats and puddings, but priceless serums and vaccines.

When a vicious disease threatens, or a hospital cot holds a feverish stricken being, from this box come little vials that bring new life and hope. Many a person in Henderson owes his life to this guardian of health. Surely it deserves to be called "the ice box that's a life box."

**PARKER'S  
DRUG  
STORE**  
The Rexall  
Store



**Awnings**  
New Samples Just  
Arrived  
Now on Display at  
Hughes Furniture Co.  
Sold By  
**T. J. Harrington**

**County Taxpayers**

Can save money by paying their taxes now before extra penalty is added.

**2% — PENALTY — 2%**

Will be added to all unpaid tax accounts after

**Monday, March 2**

I urge you not to miss this opportunity to pay-up before additional penalty is added.

Call this office for any information concerning your taxes.

**J. E. HAMLETT,**  
Sheriff of Vance County