

SAMPLE BALLOT
Official Ballot for State Officers,
U. S. Senator and Congressman

INSTRUCTIONS

- 1. To vote a straight ticket mark a cross (X) mark in the circle of the party you desire to vote for.
2. To vote for some but not all the candidates of one party, make a cross (X) mark in the square at the left of the name of every candidate printed on the ballot for whom you wish to vote.
3. If you tear or deface or wrongly mark this ballot, return it and get another.

DEMOCRATIC
FOR A STRAIGHT TICKET

MARK WITHIN THIS CIRCLE

State Officers
For Associate Justice of Supreme Court:

M. V. BARNHILL

J. WALLACE WINBORNE

A. A. F. SEAWELL

HARRY McMULLAN

FORREST H. SHUFORD

STANLEY WINBORNE

C. EVERETT THOMPSON

WALTER J. BONE

J. PAUL FRIZZELLE

HENRY L. STEVENS, JR.

JOHN J. BURNEY

Q. K. NIMOCKS, JR.

LEO CARR

H. HOYLE SINK

WILLIAM H. BOBBITT

WILSON WARLICK

ZEB V. NETTLES

ALLEN H. GWYN

ROBERT R. REYNOLDS

HAROLD D. COOLEY

Election November 8, 1938

REPUBLICAN
FOR A STRAIGHT TICKET

MARK WITHIN THIS CIRCLE

State Officers
For Associate Justice of Supreme Court:

Herbert F. Seawell, Sr.

IRVIN B. TUCKER

For Associate Justice of Supreme Court:

For Attorney General:

For Commissioner of Labor:

For Utilities Commissioner:

For Judge Superior Court, 1st District:

For Judge Superior Court, 2nd District:

For Judge Superior Court, 5th District:

For Judge Superior Court, 6th District:

For Judge Superior Court, 8th District:

For Judge Superior Court, 9th District:

For Judge Superior Court, 10th District:

For Judge Superior Court, 12th District:

For Judge Superior Court, 14th District:

For Judge Superior Court, 16th District:

For Judge Superior Court, 19th District:

For Judge Superior Court, 21st District:

For United States Senator

For Member of Congress

Election November 8, 1938

W. A. LUCAS, Chairman of State Board of Elections.

SAMPLE BALLOT
OFFICIAL BALLOT ON
CONSTITUTIONAL AMENDMENTS

INSTRUCTIONS

- 1. To vote "Yes" on any question, make a cross (X) mark in the square to the right of the word "Yes."
2. To vote "No" on any question, make a cross (X) mark in the square to the right of the word "No."
3. If you tear or deface or wrongly mark this ballot, return it and get another.

YES For Amendment Making Term of Office of Sheriff and Coroner Four Years.
NO Against Amendment Making Term of Office of Sheriff and Coroner Four Years.

YES For a Department of Justice.
NO Against a Department of Justice.

Election November 8, 1938

W. A. LUCAS, Chairman of State Board of Elections.

Official Ballot for Solicitor, State Senate
State House of Representatives and
County Officers

INSTRUCTIONS

- 1. To vote a straight ticket make a cross (X) mark in the circle of the party you desire to vote for.
2. To vote for some but not all the candidates of one party, make a cross (X) mark in the square at the left of the name of every candidate printed on the ballot for whom you wish to vote.
3. If you tear or deface or wrongly mark this ballot, return it and get another.

DEMOCRATIC
FOR A STRAIGHT TICKET

MARK WITHIN THIS CIRCLE

For Solicitor Third Judicial District
E. R. TYLER

For State Senator 14th Senatorial District
FRANK H. GIBBS

For State House of Representatives
WILLIAM A. HUNT

For Judge Recorder's Court
R. E. CLEMENTS

For Clerk Superior Court
E. O. FALKNER

For Sheriff
LENNIE L. SWANSON

For Register of Deeds
HORACE ROBINSON

For County Commissioner—4 Year Term (Vote for two)
S. B. ROGERS
E. L. FLEMING

For County Commissioner—2 Year Term
HENRY W. HIGHT

For Coroner
ASA P. PASCHALL

REPUBLICAN
FOR A STRAIGHT TICKET

MARK WITHIN THIS CIRCLE

For Solicitor Third Judicial District

For State Senator 14th Senatorial District

For State House of Representatives

For Judge Recorder's Court

For Clerk Superior Court

For Sheriff

For Register of Deeds

For County Commissioner—4 Year Term (Vote for two)

For County Commissioner—2 Year Term

For Coroner

SAMPLE BALLOT
Official Ballot for Henderson
Township Officers

DEMOCRATIC
FOR A STRAIGHT TICKET

MARK WITHIN THIS CIRCLE

For Constable
JOHN L. MUNDY

For Henderson Graded School Board 4 Year Term (Vote for three)
H. A. NEWELL
MRS. WILLIE P. PEACE
MRS. HENRY PERRY

For Henderson Graded School Board 2 Year Term
ROBERT D. BUNN

REPUBLICAN
FOR A STRAIGHT TICKET

MARK WITHIN THIS CIRCLE

For Constable

For Henderson Graded School Board 4 Year Term (Vote for three)

For Henderson Graded School Board 2 Year Term

SAMPLE BALLOT
Official Ballot for Kittrell
Township Officers

DEMOCRATIC
FOR A STRAIGHT TICKET

MARK WITHIN THIS CIRCLE

For Constable
P. L. ELLIS

REPUBLICAN
FOR A STRAIGHT TICKET

MARK WITHIN THIS CIRCLE

For Constable

SAMPLE BALLOT
Official Ballot for Watkins
Township Officers

DEMOCRATIC
FOR A STRAIGHT TICKET

MARK WITHIN THIS CIRCLE

For Constable
D. M. GLOVER

REPUBLICAN
FOR A STRAIGHT TICKET

MARK WITHIN THIS CIRCLE

For Constable

Election November 8, 1938

A. W. GHOLSON, JR., Chairman Vance County Board of Elections.

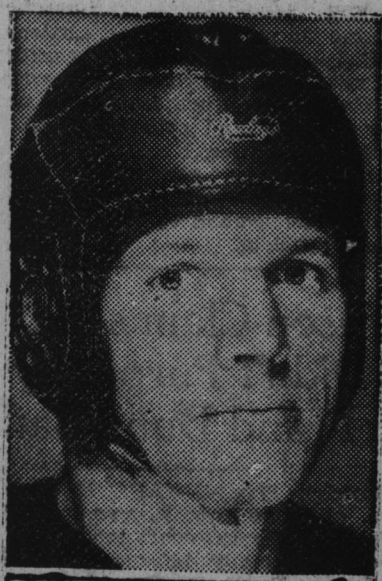
UNC To Show Several New Faces Against Gobblers

Chapel Hill, Nov. 4.—When North Carolina and Virginia Tech football teams clash here Saturday at 2 o'clock the Tar Heels will show several new faces in their starting lineup. Coach Ray Wolf plans to start four sophomores: Paul Severin and Jim Mallory, ends; Gates Kimball, tackle; and Bob Smith, center. The Tar Heel mentor also indicated he would use Tony Cernugel at fullback instead of the veteran Jack Kraynick. Cernugel, hampered by injuries for two years, has played only a few minutes this season. He showed so much improvement this week, however, that he earned a position in the starting lineup.

The Tar Heels were not in top condition as they took their final polishing drills this afternoon. George Strubbe, triple-threat quarterback;

Chuck Kline, senior end, and Chuck Slagle, guard, are both bothered by injuries which undoubtedly will slow them up for the Gobbler game. Indications point to a near capacity crowd. Carolina and Virginia Tech will have as their guests more than 12,000 high school seniors who will come here for the first North Carolina High School Day. Governor Clyde Hoey and other prominent state notables will attend the game and will be presented to the visitors between the halves. While the advance dope points to a Carolina victory, general consensus is that Saturday's game will be close and packed with thrills. Probably the most improved team in the Southern Conference, the Gobblers turned in the best performance of the season last week by upsetting N. C. State's fine team 7-0.

Two Va. Tech Stalwarts



CAPTAIN FRANK PIERCE, Virginia Tech End.



GEORGE WORTHINGTON, Virginia Tech Guard.

Captain Frank Pierce, end, and George Worthington, guard, are two of the kingpins of Virginia Tech's light but hard hitting line which meets Carolina at Chapel Hill Saturday afternoon at 2 o'clock. Pierce, a fast, aggressive pass-snatching wingman, and Worthington, an agile and durable good, played a prominent part in the Gobblers' surprising 7 to 0 victory over N. C. State Saturday. They frequently broke through to throw the Wolfpack backs for losses.

Indications point to a capacity crowd Saturday. The University will be host to over 12,000 high school seniors and they will attend the game. Governor Hoey and prominent state officials will be presented to the visitors between the halves.

Quartet Confesses Trio Of Kidnapings And One Cremation

(Continued from Page One.)

with several teeth still intact, had been found by police digging in the basement of Ukrainian hall, an East Side social establishment, where one of the kidnapers said Fried's body was cremated in the furnace. A quantity of bones uncovered yesterday were found to be those of animals. Today's discovery started the police on an investigation of the possibility that an additional victim may have fallen prey to the gang.

SATURDAY GRID SCHEDULE

NOVEMBER 5, 1938

Table with columns for EAST, WEST, and SOUTH conferences, listing teams and 1937 scores. Includes teams like Am. Int'l-Northeastern, Minnesota-Iowa, Alabama-Tulane, etc.