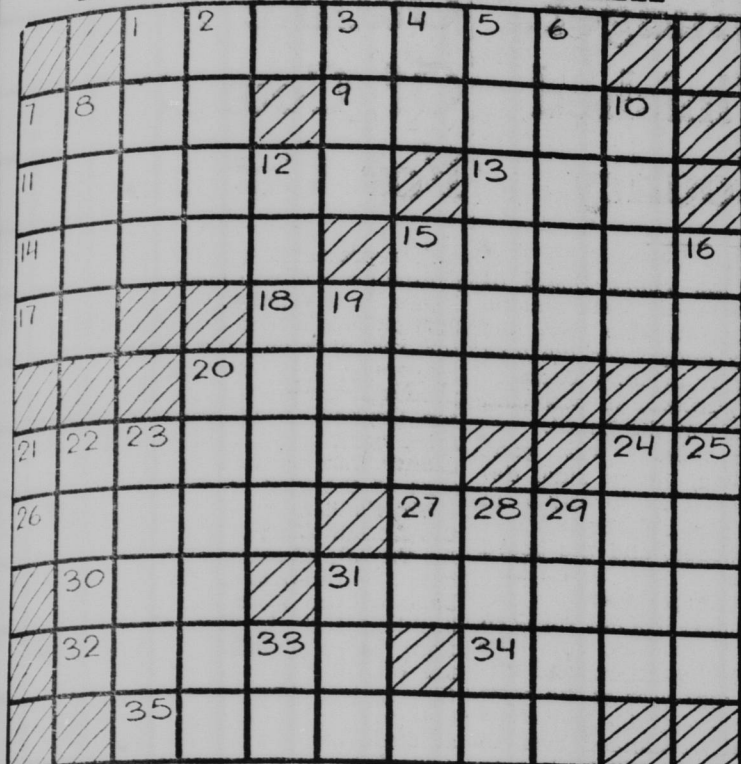


DAILY CROSS WORD PUZZLE



7-12

- ACROSS**
- 1. Indian baby
 - 7. An equal
 - 9. Burrs in wood
 - 11. Tincture used as a counter-irritant
 - 13. Letter V
 - 15. Tempestuous
 - 16. Mother-of-pearl
 - 17. Symbol for neon
 - 18. Accorded
 - 20. Long, pro-
- DOWN**
- 1. Who founded Pennsylvania?
 - 2. Dry
 - 3. Turkish weight
 - 4. Forward
 - 5. A man of learning
 - 6. Build
 - 7. The chessman of least value
 - 8. One of the Great Lakes
 - 10. Withered
 - 12. Young swan
 - 15. A dancing

Answer to previous puzzle

STEAM PLUCK
EARLY OUPHE
ACRE GRAY
TI EPOS ORE
STY APT ODD
EXCERPT
CAL ERA SUN
HEL SAYS NO
IDOL OMIT
NEWEL PLATE
ASSAI ADDED

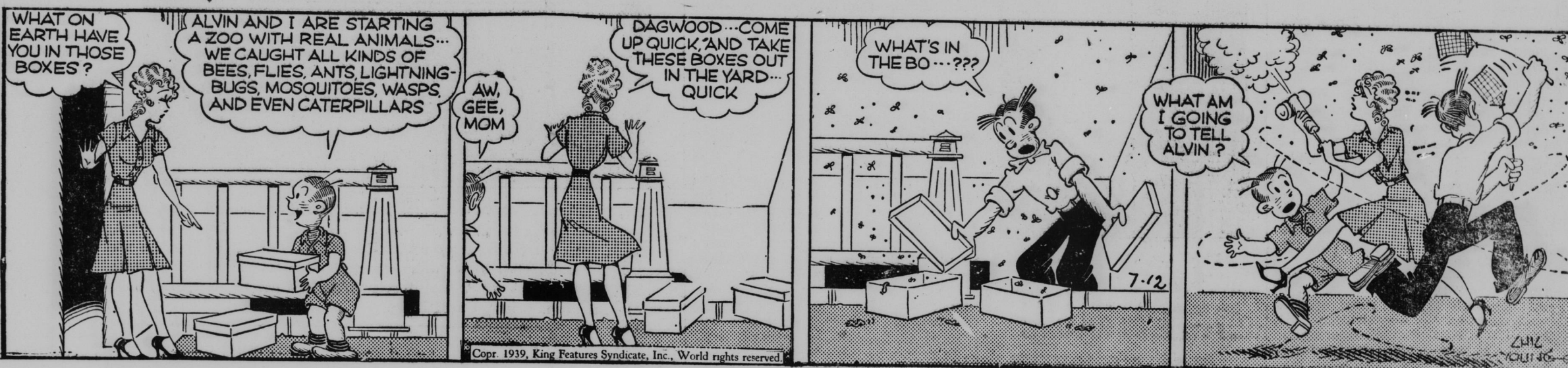
THIMBLE THEATRE Starring POPEYE



BLONDIE Registered U. S. Patent Office

Bring 'Em Back Alive, Dumpling!

By Chic Young



THE OLD HOME TOWN Registered U. S. Patent Office By STANLEY



SCOTT'S SCRAP BOOK Registered U. S. Patent Office

By R. J. SCOTT



Barclay On Bridge

LITTLE MARGINS DECIDE
HAI-TRIGGER decisions frequently constitute the difference between winning and losing bridge. Many a hand depends upon which course is taken at one crucial point, and there is very little evidence to guide the player in his selection. One of the marks of the fine cardman is his ability to assess a pretty fair average in his judgments which are so close that they are barely removed from a guess.

None
A K J 9 6 4
9 7 5 3
Q 10 6

W. N. E.
S. A. J 6
A 9 8 5

Q 10 6 3
5 2
Q 10 4
K 7 3 2

(Dealer: South. East-West vulnerable.)

North made a third-hand shut-out bid of 4-Hearts on this deal in spite of the fact that he did not have the number of playing tricks usually considered essential. He justified it later by the fact that he was totally void in spades and therefore felt that a game would be certain for the opponents in that suit, a surmise in which he was definitely wrong, as an inspection of the holdings will disclose.

Copyright, 1939, King Features Syndicate, Inc.

East promptly doubled and led the diamond A, followed by the J to the Q and K, the spade A being returned for a ruff. North saw no way to avoid a loser in clubs, and therefore had to prevent any trump loser. His big question was the location of the heart Q, which he finally dropped by playing his two high ones.

North's line of reasoning was that West, who had not doubled, had already shown the diamond K and the spade A; if he held any more cards of defensive value, East probably would not have doubled. Consequently, East probably had the heart Q. If so, it could not be shut out except by finding it to be a doubleton and dropping it.

Tomorrow's Problem

8 6
K Q 6 4
A 10 5 4
10 9 8

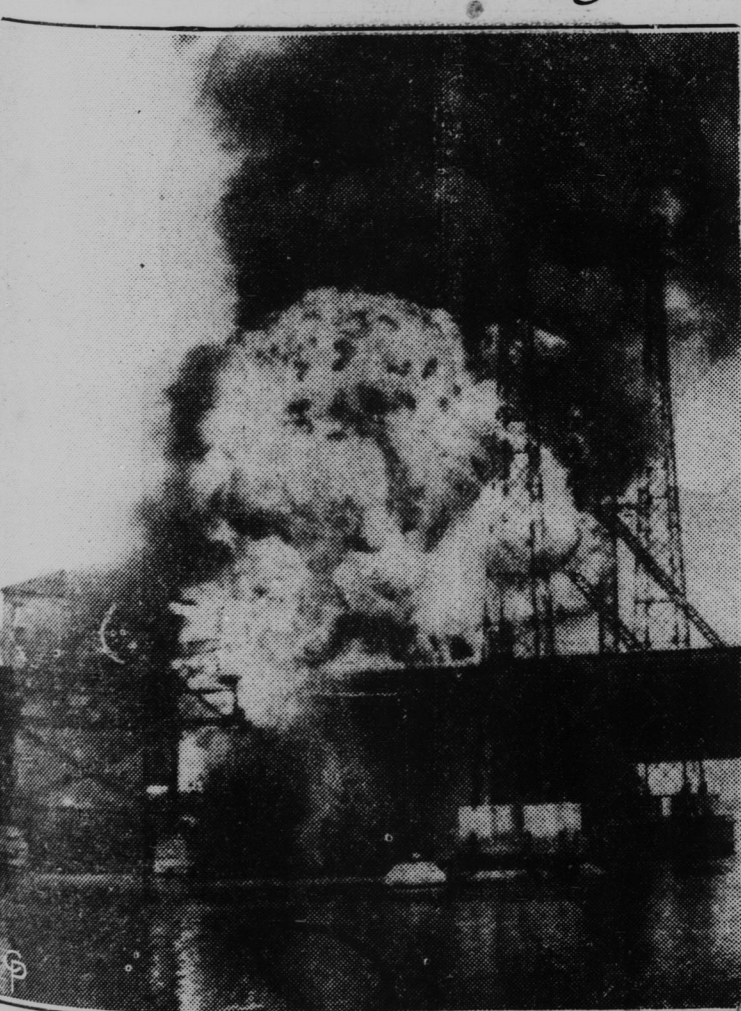
K 7 5 4
3
9 7 5 3
K
A Q 4

W. N. E.
S. A J 10 2
Q J 7
K J 7 6 5 3

(Dealer: North. Both sides vulnerable.)

If East makes an absurd original bid of 4-Spades on this deal, what should be the ensuing course of the auction?

Inferno on Drawbridge



Clouds of smoke and flame rise from the blazing drawbridge over the Mianus River, near Cos Cob, Conn. Fire started in a drawbridge cabin, reached gas tanks which exploded, and spread to ties. Traffic between New York and Stamford, Conn., was delayed several hours.

ETTA KETT



THE GUMPS—A GRIM OUTLOOK!

