

# Methodists Of Vance To Celebrate Their Union

**Bishop W. W. Peele Will Speak in First Methodist Church Sunday Evening; Total Membership in County Over 4,000 Now.**

Twenty-one local churches in seven pastoral charges of the denomination in Vance county will meet next Sunday to celebrate their union, consummated a few months ago at the United Conference in Kansas City. All-day services in one locality and other types of exercises elsewhere will be climaxed with a sermon by Bishop W. W. Peele, in charge of the North Carolina Conference, at the First Methodist church in the evening.

Two of the oldest churches in the county will meet for the first time as one Methodist church when Plank Chapel, formerly Methodist Episcopal, and Union Chapel, formerly of the Methodist Protestant denomination, gather at 11 o'clock for union services at Plank Chapel. The pastor of that church, Rev. J. A. Martin, will speak on the subject, "The Apostolic Church," and Rev. J. P. Pegg, of Union Chapel, will speak on "The New Unity in Methodism." No afternoon services will be held.

All-day services have been arranged at the Middleburg Community House for the five churches of the old Methodist Protestant group in the Vance charge, and the five in the Middleburg charge of the old Methodist Episcopal. A joint Sunday school will be held at 10 o'clock. There will be classes for all ages, and workers from the several groups will be in charge of the several groups. The 11 o'clock service will be devoted to the interests of Methodist laymen, with J. A. Turner speaking for the Middleburg charge and C. B. Basket for the Vance charge.

At Middleburg, Dr. W. K. Green, of Duke University, assistant conference lay leader, will speak on "The Layman as an Evangelist," and a picnic dinner will be served on the grounds. In the afternoon the program will be given over to the United Conference and its work. Jasper B. Hicks, Henderson attorney, who was a lay delegate from the North

Carolina Methodist Protestant Conference at Kansas City, will speak, along with Mrs. T. P. Hester, discussing woman's work, and Dr. Fred W. Paschall, of Burlington.

All of the churches are to come together in the service in the First Methodist church in Henderson in the evening to hear the sermon by Bishop Peele. He was elected to the episcopacy at the United Conference and was assigned to the Richmond area, which includes the North Carolina Conference. Bishop Peele is a native of North Carolina. As a pastor, he served some of the outstanding churches in both the North Carolina and Western North Carolina Conferences, and was presiding elder of the Greensboro district at the time of his election as a Bishop. At that time he was also president of the North Carolina Council of Churches.

The twenty-one churches of the seven charges of Methodism in Vance county report a combined membership of 4,065, with 3,150 enrolled in their Sunday schools. Their property is valued at \$317,600, including church buildings and parsonages. In 1938 they raised a total of \$27,935 and contributed \$1,737 to their orphanages.

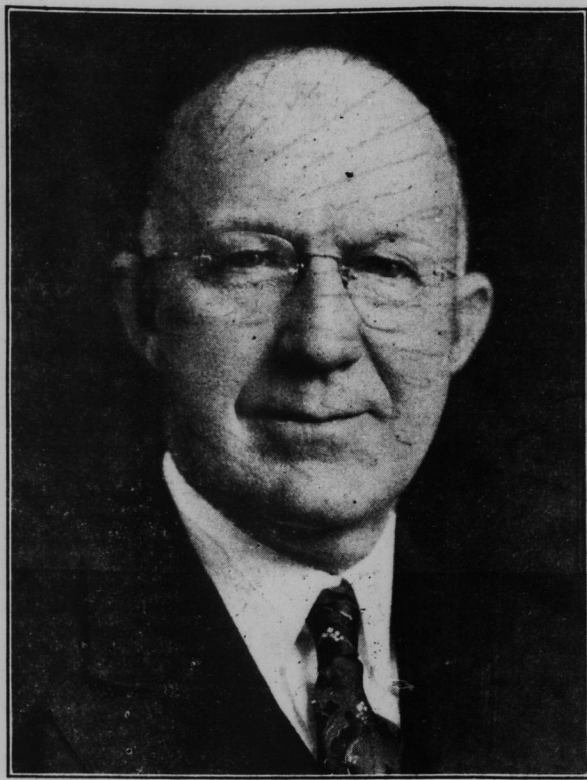
The various units of the united church in Vance county are:

- Granville charge, Rev. J. P. Pegg, pastor, membership, 608; churches, Mt. Carmel, Rehoboth, Union Chapel.
- Middleburg charge, Rev. D. A. Petty, pastor, membership, 732; churches, Cokesbury, Drewry, Middleburg, Shocco Tabernacle.
- Tar River charge, Rev. J. A. Martin, pastor, membership, 716; churches, Ebenezer, Kittrell, Plank Chapel, Trinity.
- Vance charge, Rev. J. D. Cranford, pastor, membership, 548; churches, Flat Rock, Gillburg, Harris Chapel, New Hope, Spring Valley.
- First Methodist church, Henderson, Rev. R. E. Brown, pastor; membership, 800.
- City Road and White Memorial churches, Rev. J. K. Worthington, pastor; membership, 301.
- Christ Methodist church, Rev. T. J. Whitehead, pastor; membership, 360.

### Have Fine Luck Fishing.

Mr. and Mrs. C. C. Loughlin, Jr., have returned from Ocean View, Va., where they have been fishing. They reported fine luck, and brought back plenty of fish to show for their efforts. They estimate about 150 pounds of croakers and spots were landed by them, some of the croakers being of top size.

## Methodist Leader Here Sunday



BISHOP W. W. PEELE

## Company C To Convict Camp Go To Camp Will Soon Be On Saturday Ready Here

Company C, 120th Infantry, National Guard unit in Henderson, is to leave tomorrow afternoon for Fort McClellan, Anniston, Ala., for its annual two weeks summer encampment. The unit was to have trained at Camp Jackson, Columbia, S. C. but the change was made because of the prevalence of infantile paralysis in South Carolina this season.

The company is commanded by Captain C. B. Sturges, First Lieutenant G. M. O'Neil, and Second Lieutenant W. D. Williams. Its personnel is virtually at full peace-time strength of three officers and 64 men.

The company will leave here on two special cars attached to the Seaboard Air Line passenger train No. 3 at 3:30 Saturday afternoon, and will be due at Anniston sometime Sunday. It is understood infantry units at Warrenton and Oxford will also join Company C here. At Hamlet a special National Guard train is to be made up for the remainder of the trip to Anniston, with other infantry companies over the State attached in special cars there.

A full two weeks training period is to be had at Fort McClellan, a camp said to be one of the best in the South. The soldiers will return August 12 or 13.

Other military units in Henderson, all of the 405th Medical Regiment, were at a Jacksonville, Fla., camp early in July, having been transferred there from Camp Jackson at Columbia. That contingent included the service company, the regimental band, and the regimental headquarters staff, Colonel Hodge A. Newell, of Henderson, is commander of the 105th Medical Regiment.

## Standings

SOFTBALL STANDINGS (City League)			
Club	W.	L.	Pct.
Gro-Swift	8	1	.889
Christians	4	3	.571
Rose	4	4	.500
Puro Pep	4	5	.445
Kiwanis	4	6	.400
Bankers	2	5	.286

PIEDMONT LEAGUE			
Team	W.	L.	Pct.
Asheville	61	38	.616
Portsmouth	53	46	.535
Durham	47	45	.511
Norfolk	47	45	.511
Rocky Mount	49	47	.510
Charlotte	49	48	.505
Richmond	43	49	.467
Winston-Salem	33	64	.340

AMERICAN LEAGUE			
Team	W.	L.	Pct.
New York	64	25	.719
Boston	5	32	.632
Chicago	51	40	.560
Cleveland	47	40	.540
Cincinnati	45	45	.500
Detroit	37	56	.398
Washington	33	54	.379
St. Louis	24	64	.273

NATIONAL LEAGUE			
Team	W.	L.	Pct.
Cincinnati	56	30	.651
St. Louis	46	40	.535
Pittsburgh	45	40	.529
Chicago	48	43	.527
Brooklyn	42	43	.496
New York	42	45	.483
Boston	40	47	.460
Philadelphia	36	57	.313

## Results

- CITY SOFTBALL LEAGUE.** First Half Play-off. Gro-Swift 9, Bankers 2.
- PIEDMONT LEAGUE.** Durham 7, Rocky Mount 5. Portsmouth 10, Norfolk 1. Asheville 7, Richmond 2. Charlotte 10, Winston-Salem 1.
- AMERICAN LEAGUE.** Chicago 12, Boston 7. Detroit 8, Washington 1. Only games played.
- NATIONAL LEAGUE.** Cincinnati 6-9, Boston 1-8 (2nd game 11 innings). Chicago 3, Brooklyn 1. Philadelphia 9, Pittsburgh 8. St. Louis 9, New York 4.

## Campers For Crabtree Area Are Invited

Adults or young people desiring to arrange an outing at Camp Sherwood Forest in the Crabtree Creek Recreation Area between Durham and Raleigh were today invited by Mrs. W. D. Payne, WPA recreational director for Vance county, to apply to her at once. While the camp is directly serving the Durham and Raleigh section, it is intended to serve also an area of 50 miles radius from the site.

Mrs. Payne has been advised that the cost of the camp is \$3.50 per camper per week, or \$1 per camper per week-end. Only 48 campers can be accommodated at one time as yet.

The adult camp period extends from 1 p. m. Saturdays to 5.30 p. m. Sundays, and all must leave not later than the latter hour.

Each camper is required to furnish bed linens and toilet needs; also a bathing suit, sweater, raincoat, shoes, flashlight and any musical instrument played.

The adult week-end camping schedule is as follows: July 30, business girls; August 5-6, Industrial girls; August 12-13, mothers; August 19-20, dads; August 28-September 8, open; September 2, 3, 4, family camp; September 5-10, open.

Application blanks and full information may be had from Mrs. Payne by adults or young people interested in an outing at the camp.

## Gro-Swifts Top Bankers, 9-2

Gro-Swifts proved too powerful at bat and too good with pitching for the Bankers yesterday afternoon in the first half City League softball play-off, and the Bankers fell by a 9 to 2 score.

The big bats of the winners rapped Jacoby Williams for a total of thirteen hits, with Williams contributing two base on balls.

Abbott limited the Bankers to six hits, walked one, and received top support from his mates afield.

Manager Ed Branch led the Gro-Swifts at bat, with three for three, two of his licks being most timely.

Gro-Swifts meet the winners of the second half for the league title. At present, the Gro-Swifts are far ahead in the second half race, and appear to be certain winners of the bunting.

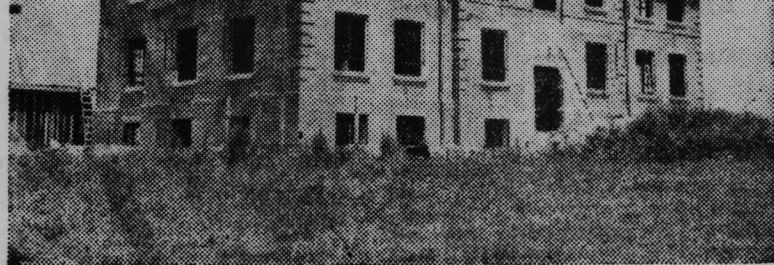
## Gus Zollicoffer Wins Camp Medal

Gus Zollicoffer, Jr., son of Mr. and Mrs. A. A. Zollicoffer, won the medal presented at the Junior Water Regatta Sunday at Chimney Rock Camp for Boys, at Lake Lure, where he is spending two months this summer.

Sam Biller, father of J. R. Biller, of Burlington, and until recently a merchant of Henderson, died a few days ago in Milwaukee, Wis., his home, according to word today from Mrs. Biller in Burlington. No details were given, other than Mr. Biller was in Milwaukee for the funeral and burial.

## SAM BILLER DIES AT MILWAUKEE HOME

## Oxford Tobacco Research Building



Five times more space for tobacco insect and disease control work will be provided for research men with the completion of the new laboratory building (shown above) at the Tobacco Experiment Station at Oxford, Commissioner of Agriculture W. Kerr Scott announced today. The three-story brick structure will contain 37 rooms and laboratories, housing both state and federal employees and is scheduled to be completed by October 1. "Funds for the erection of the building were furnished by the federal government, largely through the efforts of former Congressman William B. Umstead, of Durham," Scott said.

## HIGHEST QUALITY

Groceries, Fresh Fruits and Vegetables

The best of everything for your table.

**M. G. EVANS**

Phones 162 and 163

## Rockies Meet Louisburg

Greystone Rockies will clash with Louisburg in a Tri-County league game at Greystone Saturday afternoon at 3:30 o'clock.

I. J. Byrd is slated to do the hurrying for the Rockies. Several weeks ago, Byrd turned in a three hit performance as the Rockies turned back Pilot.

Charlie "Dunk" Poole, dependable receiver, will be behind the plate for the Rockies.

An appeal has been voiced by the management of the Greystone team to fans to attend the game, and to bring along their friends. Yes, they say, even bring along the mother-in-law, she'll enjoy the contest.

Sunday, at the same hour, 3:30 p. m., the Rockies will meet Ca-Vel.

## Today's Games

**CITY SOFTBALL LEAGUE**  
Bankers vs Christians.  
Rose vs Parol.

**PIEDMONT LEAGUE**  
Durham at Rocky Mount.  
Norfolk at Portsmouth.  
Richmond at Asheville.  
Charlotte at Winston-Salem.

**AMERICAN LEAGUE**  
Cleveland at Washington.  
Detroit at Philadelphia.  
Chicago at New York.  
St. Louis at Boston.

**NATIONAL LEAGUE**  
Philadelphia at Cincinnati.  
Boston at Pittsburgh.  
New York at Chicago.  
Boston at St. Louis.

# DICKSON'S

"HENDERSON'S FOOD CENTER"

- 1 lb. pkg. FFV VANILLA WAFERS .13c
- ESSKAY SALAD OIL, qt. . . . .26c
- Quarter Pound Can McCormick's TEA . . . . .19c
- 4 oz. OH BOY POPPED WHEAT, 2 for 9c
- Pure Apple Cider VINEGAR, gallon .17 1-2c "Bring Your Containers"
- JEFFERSON ISLAND SALT, pkg. . . . .3c
- JEWEL, 4 lb. ctn. . . . .35c
- or VEGETOLE, 8 lb. ctn. . . . .70c

## MARKET VALUES

- Skinless Franks, lb. 17 1-2c
- Tender ROUND STEAK, lb. . . .25c
- Meaty PORK ROAST, lb. . . . .17c
- Select SLICED BACON, lb. . . .21c
- Quality CHUCK ROAST, lb. . . .17c
- VEAL CUTLETS, lb. . . .25c
- Process BUTTER, in prints, lb. 30c
- SIRLOIN STEAK, lb. . . .29c
- PORK BRAINS, lb. . . .10c
- VARIETY or COLD CUTS
- IRISH POTATOES, 10 lb. . . .21c
- Fresh Local BUTTER BEANS, lb. . . .4c
- Local Red TOMATOES, lb. . . . .4c
- RIDGWAY CANTALOUPEs, each . .2c
- 17% PROTEIN SILK FLOSS SHORTS 100 Pound Bag . . . . \$1.60
- 16% PROTEIN DAIRY FEED . . . . \$1.45
- Hen SCRATCH FEED . . . \$1.65

## TRIUMPH FLOUR

- PLAIN or SELF-RISING 12 Pound Bag . . . . .32c
- 24 Pound Bag . . . . .58c
- 48 Pound Bag . . . . \$1.15
- 98 Pound Bag . . . . \$2.25

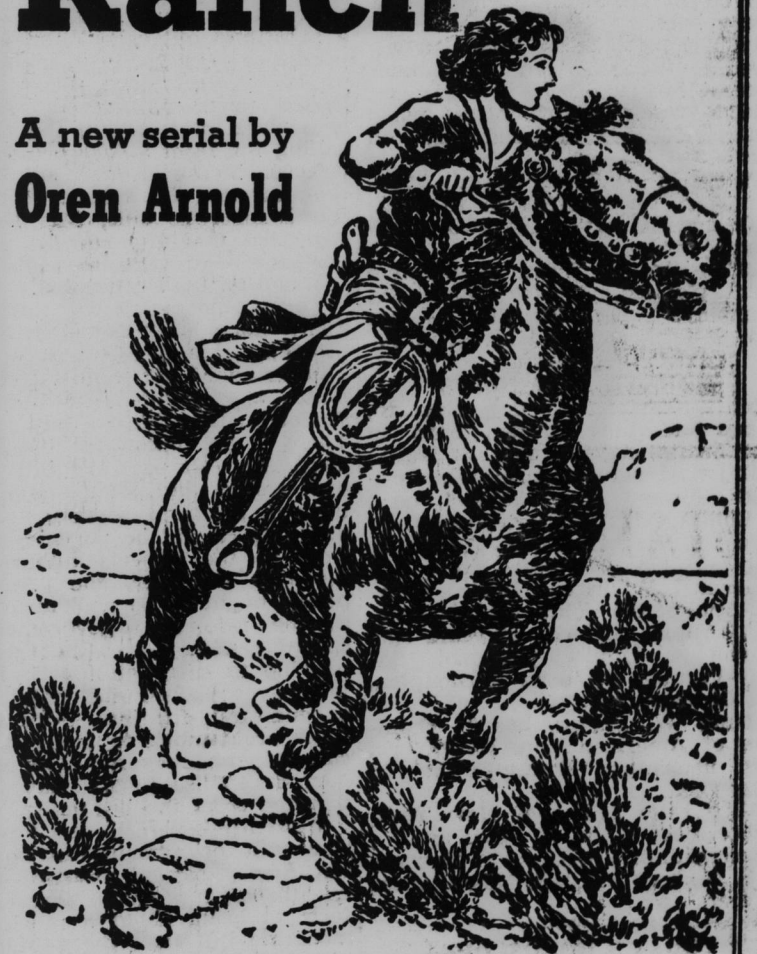
Try Our Quality Coffee  
RICH FLAVOR, lb. . . . .15c  
MASTER BLEND, lb. . . .18c  
ROYAL GUEST, lb. . . .21c

# DICKSON'S

123 HORNER STREET PHONE 659  
C. PALMER DICKSON, JR., OWNER

# Phantom Ranch

A new serial by Oren Arnold



ONCE in a blue moon a serial like this! A Western modern—hard-riding, fast-action drama in which a pretty tenderfoot gallops headlong into dangerous adventure on a remote Arizona cattle-ranch.

Begin this gripping romance TODAY IN THE Henderson Daily Dispatch

## Your Complete Food Store

Fresh Meats Fancy Groceries Fresh Produce

Everything For Your Table.

Turner's Market Phones 304 and 305

THIS WHISKEY IS 3 YEARS OLD  
**OLD LOG CABIN BRAND**  
STRAIGHT BOURBON WHISKEY  
NATIONAL DISTILLERS PRODUCTS CORP.  
PEORIA, ILL.  
80¢ Pint  
\$1.45 Quart