

FSA Committeemen Named For County

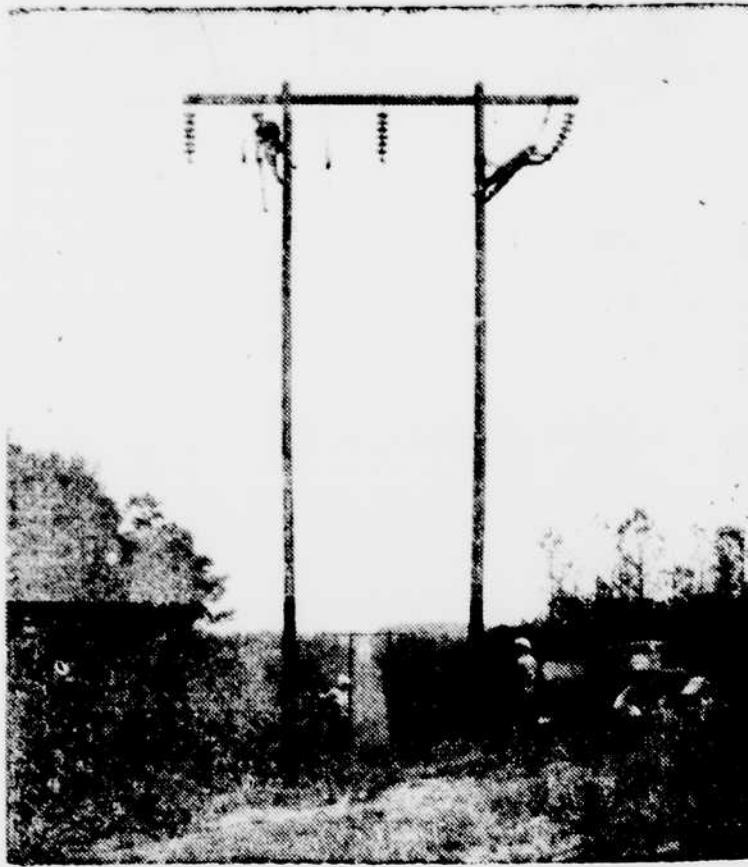
Group Will Advise and Assist in Operation of Rehabilitation and Tenant Purchase Programs; FSA Active in Vance.

Eight Vance County committeemen have been named by the Federal Soil Conservation Service, Agricultural Administration, for the county. The group will advise and assist in the operation of the rehabilitation and tenant purchase programs. The Federal Soil Conservation Service, Agricultural Administration, announced the names of the committeemen at a meeting in Vance county.

Members of the committee include: Mr. M. T. Green, Mr. M. T. Green, Mr. M. T. Green, Mr. M. T. Green, Mr. M. T. Green, Mr. M. T. Green, Mr. M. T. Green, Mr. M. T. Green.

The rehabilitation program is designed to help farmers who have lost their farms due to drought or other causes. The tenant purchase program is designed to help tenants who wish to buy their own farms.

Power Line Nears Completion



The new 110,000 volt line from the Carolina Power and Light Company is nearly complete. The line will run from the Cape Fear river to the Yadkin river. The line is being built by the Carolina Power and Light Company.

The line will provide power to the area between the Cape Fear and Yadkin rivers. The line is being built by the Carolina Power and Light Company.

Stock Buyers More Active

New York, July 2.—(AP)—The buying side of the stock market had a better following today and such groups as steels, rails, farm implements and industrial specialists pushed ahead fractions to a point or more.

Volume was around 400,000 shares.

DuPont	154
General Electric	32 1/4
General Motors	37 3/4
Loggett & Myers B	36 1/4
Montgomery Ward & Co	34
Reynolds Tob B	32 5/8
Southern Railway	13 5/8
Standard Oil N J	42 1/2
U S Steel	35 7/8

N. C. Author Ends His Life in Mexico

(Continued From Page One)

Cash's death extended personal condolences to the widow and offered her the hospitality of the embassy residence until she returns by airplane to Charlotte.

Born in Cleveland county, N. C., Cash was educated at Wake Forest college and at Wofford college, Spartanburg, S. C.

Mrs. Cash said her husband had suffered from a nervous disorder as the result of strain from writing.

Russians Retreat On Wide Front

The German high command used the fighting "massively" and said the Russians were being driven back in many places.

The German high command used the fighting "massively" and said the Russians were being driven back in many places.

Abernathy And Ward Start New Agencies; Yelton And Fletcher Take State Posts

In the Sir Walter Hotel, Daily Dispatch Bureau, BY HENRY AVERILL.

Ward and Abernathy have started new agencies. Yelton and Fletcher have taken state posts.

Easy-To-Prepare Picnic Foods

We're helping you to celebrate the long week-end by offering dozens of holiday and picnic foods at prices that fairly sizzle! Check your order with our list of suggestions—come to Big Star and SAVE!

407-409 Garnett St.	
Strictly Fresh Eggs, carton, doz.	33c
James River Smithfield Spread, 2 2 1-2 oz. jars	25c
Heinz Fresh Cucumber Pickles, Jumbo Jar	20c
Lyonhaven Mustard, qt. jar	10c
Red Mill Peanut Butter, 16-oz. jar	15c
Cut-Rite Waxed Paper, 40-ft roll, 5c Southern Manor Asparagus, 2 picnic cans	29c
Assortment N. B. C. Pride, 1-lb. box For Salads or Frying Wesson Oil, pt. can	21c
Libby's Snowdrift 1-lb. can	19c
3-lb. can	55c
Vim Pep Dog Food, 6 cans	25c
Paper Napkins, 80 to pkg.	5c
Libby's Stuffed Olives, 3-oz. bottle	19c
Libby's Tomato Juice, 3 No. 1 cans	20c
Armour's Star Canned Meats	
Corned Beef, No. 1 can	20c
Corned Hash, 11-oz. can	11c
Lunch Tongue, 6-oz. can	17c
Vienna Sausage, No. 1 can	21c
Potted Meat, 4 5-oz. cans	25c
TRFET, Ready to Eat, 11-oz. can	25c

Triple Fresh Sandwich BREAD 2 Large Loaves 15c

Double Fresh Golden Blend **COFFEE, 2 lbs.** 29c

Guaranteed Meats

Fresh Dressed **FRYERS, lb.** 20c

Wafer Sliced Kingham's Reliable **BOILED HAM, lb.** 43c

GEORGIA HAMS Small, 5 to 9 lb.—lb. 24c

Stock Up For Picnics—Tender, Skinless **FRANKFURTERS, lb** 19c

4 to 6 lb. Cello Wrapped **Smoked Picnics, lb.** 21c

Round Steak Cut from govt. graded western steers, lb. 24c

Chuck Roast Govt. graded western steer—tender, lb. 17c

Baked Picnics Swift's Ready-to-Serve, lb. 29c

Sliced Bacon 1-pound Package 21c

Between jobs at home ... pause and



After any exertion, a pause is always welcome. Doubly so if you enjoy ice-cold Coca-Cola with it. Ice-cold Coca-Cola is pure and wholesome. You taste its quality ... feel its refreshment. So when you pause throughout the day, make it the pause that refreshes with ice-cold Coca-Cola.

BOTTLED UNDER AUTHORITY OF THE COCA-COLA COMPANY BY COCA-COLA BOTTLING COMPANY OF HENDERSON

... every photograph, but just the same they are a good thing. They are a good thing.

Ward and Abernathy have started new agencies. Yelton and Fletcher have taken state posts.

Ward and Abernathy have started new agencies. Yelton and Fletcher have taken state posts.

Garden Fresh Produce

LEMONS, Dozen 19c

Garden Fresh **WATERMELONS,** 20c and 25c

FRESH PEACHES, 4 lbs. 19c

Nice Size **CORN, Dozen** 23c

Salad Dressing Or Relish, Mother's, qt. jar	25c
SWEET PEAS Southern 2 No. 2 cans	23c
Pineapple Juice Dole 2 No. 2 cans	25c
WHOLE BEETS Southern 2 No. 2 cans	25c
PRESERVES Old Virginia Popular Varieties—2lb. jar	27c

Land o' Lakes Butter and Cheese Sale Sweet Cream Butter, lb. cubes	42c
Best American Cheese, lb.	23c
Loaf Cheese Pimento Loaf Cheese, 2-lb. Loaf	51c
White American and American, 2-lb. loaf	49c