

First Lady at Scout Rally



Mrs. Franklin D. Roosevelt is shown (center) as she attended the second Western Hemisphere Encampment of Girl Scouts and Girl Guides at Camp Bonnie Brae, East Otis, Mass. Behind the First Lady and the scout leaders are some of the girls, holding the flags of their various nations. (Central Press)

'The Beaver' Meets OPM Chief



Lord Beaverbrook (left), British Minister of Supply, gets together in Washington with William S. Knudsen, co-director of the Office of Production Management, after a luncheon meeting with President Roosevelt. "The Beaver" says he asked Knudsen for "many favors" in supplying British orders for war materials.

\$1,000,000 Dream Army Morale Chief



Philip Wallach

Examining documents bequeathed to him by his grandmother, Philip Wallach, of Irvington, N. J., discovered a 1777 Revolutionary War bond issued by the State of Massachusetts Bay. With six per cent compound interest, he figured it was now worth more than \$1,000,000. But the Massachusetts Treasury has informed him it will not honor the bond and that he will have to take up the matter with the Federal Government, which assumed debts of the colonies when they became the United States.



Frederick H. Osborn

Made a brigadier general overnight, Frederick H. Osborn, 52, 6-foot-8 New York banker, is shown in Washington as he started work directing the Army's morale branch. Appointed to the post by President Roosevelt, he previously had served as chairman of a special War Department committee handling Army recreation and welfare problems.

"Banjo Eyes" Back on Broadway



After an absence of 14 years from the legitimate stage, Eddie Cantor breezed into New York from Hollywood to rehearse for the Broadway production tagged "Banjo Eyes." The comedian takes time out from breakfast to pose with a couple of boiled eggs. You guess what they represent. (Central Press)

Nazi Closing on Leningrad



With southeastern Ukraine in Nazi hands, Odessa under continued siege, and Leningrad in range of German guns, Berlin claimed a tremendous victory in the Gomel sector of the central front. Russia is reported to have blown up the great Dnieper Dam at Dnepropetrovsk to flood the lower river and block the Nazis. Berlin warned that if Leningrad is defended it will suffer the fate of Warsaw. St. Peter area on map remains in Soviet hands. (Central Press)

Screen Actress Marries



Film actress Ellen Drew is pictured with Cal Neva Lodge, Hollywood writer, to whom she was married at Cal Neva Lodge, Nevada, famous haunt of movie folk. A Cinderella of the films, Miss Drew, 26, rose to stardom after being "discovered" working in a Chicago department store three years ago. (Central Press)

His Prison Plot Unmasked



Officials at Eastern Penitentiary in Philadelphia watched surreptitiously when William (Slick Willie) Sutton (left), 35-year-old machine gun bandit, went in for art, and when he had finished the plaster mask and hand being examined by a guard, at right, they cracked down. They said he intended to place the mask on his pillow one night to give the impression he was safely tucked in bed, then seek to end his 25-to-50 year confinement prematurely.

Girl and Grandma Wed Together



Christine Thompson, 26, and her grandmother, Mrs. Mary Sharpe, 77, exchange congratulations outside the church after their joint wedding in Yorkshire, England. The grandmother had arrived with a friend, Dan Aran, to attend Christine's wedding, and they decided to make it a double ceremony. (Central Press)

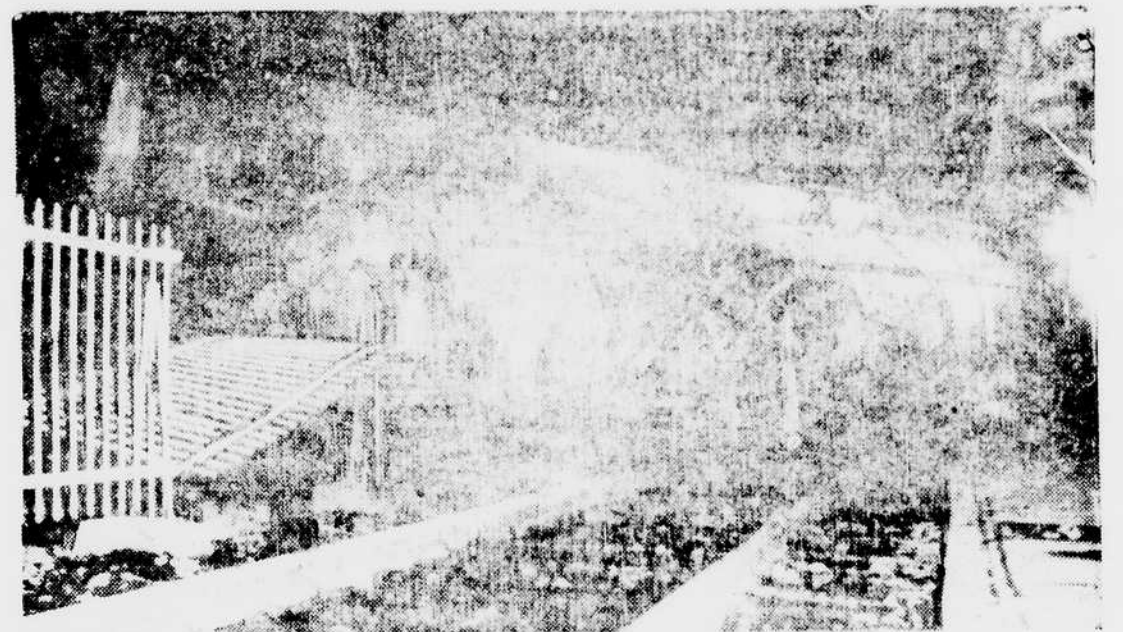
President's Son on Duty in London



C. P. Cablephoto

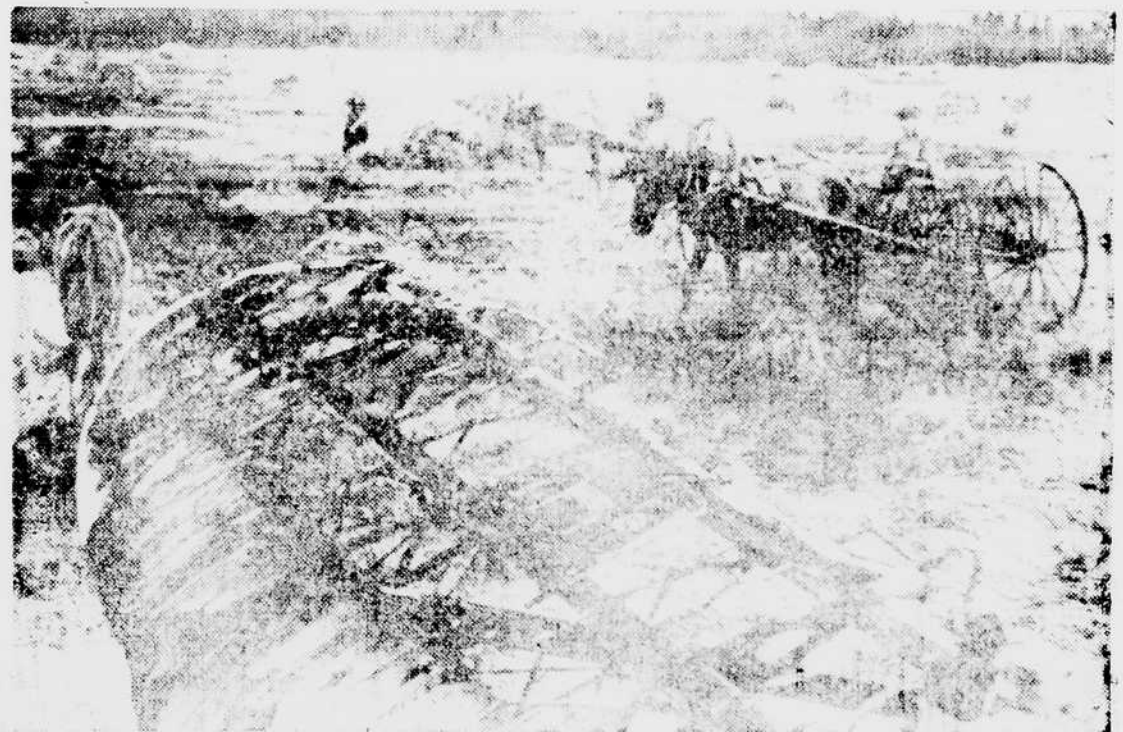
Franklin D. Roosevelt is shown with another U. S. Army Air Corps observer in London, Maj. D. W. Hitchcock, as they stand in front of the White House. The President's son, Franklin D. Roosevelt, Jr., is seen in the background. (Central Press)

Death Takes the Throttle of Jersey Train



The fireman was killed and the engine blown to bits when the locomotive and five milk train cars were derailed at Millburn, N. J., on a curve. The engine and one car swung around a sharp curve leading into the station where a passenger train was stopped. Officials did not say whether the engine was derailed by a landslide or by a rock fall.

Red Peasants Continue Work Despite War



C. P. Radiophoto

According to the official Russian caption with this photo, which was flashed by radio from Moscow to New York, the peasants of the Soviet are not allowing the war to interfere with their necessary work, and some of them are shown working in the field where a German plane has been shot down.

Sees U. S. in War



Sen. Hiram W. Johnson

President Roosevelt committed the United States to war by his eight-point pact with British Prime Minister Winston Churchill. It was charged in the Senate by Sen. Hiram W. Johnson, of California, ranking Republican on the Foreign Relations Committee. He cited the plan for a new world order "after the destruction of the Nazi tyranny."

King's Cousin Visits N. Y.



Lord Louis Mountbatten, a cousin of King George VI of England, is shown with his wife as they talked to reporters after arrival in New York by clipper plane. A captain in the British Navy, he is going to take command of an English warship being repaired in this country. He was commander of two destroyers sunk in action.