

# Nelson Gets Hard Job

## Apply Priorities and Allocations Board Weeks to Control Flow of All Goods.

**CHARLES P. STEWART**  
Central Press Columnist

Sept. 4.—It is seven months ago that the essential ingredients to mix the ingredients will be mixed together, with the addition of an eighth ingredient to what's still to remain a seven-ingredient concoction?

We'll learn as our new emergency Supply Priorities and Allocations Board begins to get really busy. As every body has known, our national offices, created to produce production of defense and democratic supplies, while giving our civilian population a share in haven't pulled together very effectively.

They have not exactly quarreled, but the results of the whole joint program's badly started and interfered with.

William S. Knudsen, representing government, and Sidney Hillman, representing labor, have been twin stars in those Secretaries Henry Stimson and Frank Knox have had for the requirements of the war and navy departments respectively. Leon Henderson has spoken in plain, direct, and reasonable language has been expected, but his words haven't turned the velocity that the situation.

Judge Rosenman's Idea  
President Roosevelt called on Judge Rosenman, to come to Washington from New York and see the situation.

Members include Bill Knudsen, Sidney Hillman, Henry Stimson, Frank Knox and Leon Henderson. Now, if those chaps couldn't get along, can they agree as members of one committee? That remains to be demonstrated.

Bill Knudsen, Henry, Frank, and Harry are Vice President of the A. Wallace and Donald M. Hetherington OPM's director of the board.

It makes eight, according to my count, not seven. Henry Wallace is chairman, and Leon Henderson is a member of it, unless he is excluded.

It appears to leave Don Nelson out in the cold. Yet he's the executive director, the guy who has more to do with its activities than all the other members put together.

Just how an executive director works alongside a chairman I'm uncertain, but the general surprise is that the board's real boss will be Don Henderson. He's argued all for central control of production and distribution of supplies for the emergency. Apparently he can't get "Sammy the Rose" to his idea, it sounds not unlikely that

"Sammy" recommended him to F. D. R. as the best real head of SPAB's operations.

**Nelson Over Knudsen**  
Nelson, a former Sears Roebuck & Co. official, is a mild individual, who undoubtedly will do his utmost to avoid friction with SPAB's membership. In effect he's been boosted over Bill Knudsen's head, which might be expected to antagonize Bill. Bill's mild, too, though; so perhaps he won't be resentful.

But Leon Henderson isn't mild. He disagrees with Nelson there'll be fireworks on Leon's part.

A mitigating circumstance in connection with the Nelson-Henderson situation is that Nelson's a civilian supplies specialist and that Nelson's quite pro-civilian. However, it's to be remembered that Secretaries Stimson and Knox are as pro-military as they make 'em. Sidney Hillman's pro-labor and Nelson isn't particularly so. He's pro-employer.

As such, he's an extreme New Dealer but Henry Wallace is ultra. Henry Wallace might class as a neutral.

Whether or not those ingredients, forcibly shaken up together, will mix any better than previously, is a matter of guesswork.

As every body has known, our national offices, created to produce production of defense and democratic supplies, while giving our civilian population a share in haven't pulled together very effectively.

They have not exactly quarreled, but the results of the whole joint program's badly started and interfered with.

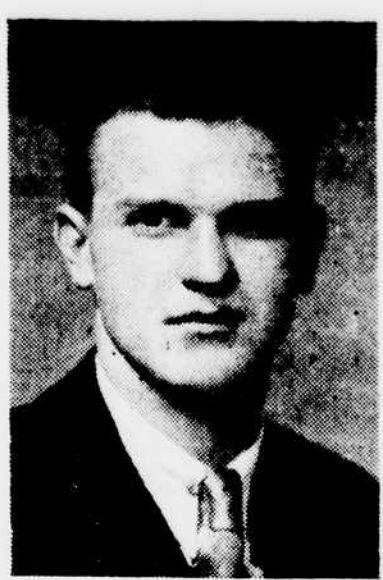
William S. Knudsen, representing government, and Sidney Hillman, representing labor, have been twin stars in those Secretaries Henry Stimson and Frank Knox have had for the requirements of the war and navy departments respectively. Leon Henderson has spoken in plain, direct, and reasonable language has been expected, but his words haven't turned the velocity that the situation.

Judge Rosenman's Idea  
President Roosevelt called on Judge Rosenman, to come to Washington from New York and see the situation.

# Hughes Furniture Co. Operators



JOHN M. HUGHES



J. M. HUGHES, JR.

His anti-labor attitude assumed by Madam Curran. Having served the nation as director general of industrial relations during World War I, I know the great importance of an impartial secretary of labor at a time like this.

Labor vs. Investors  
Labor leaders seem to forget that the value of their insurance policies, savings bank accounts, and even college pensions depends 100 per cent upon the corporations (for which they are working) making profits. Working conditions have been bad in certain localities and I honor those labor leaders who have rectified them; but these labor leaders should know when to stop.

Right or Left?  
We hear too much about personal "rights" and the "right" to strike rather than to arbitrate; but arbitration is right. Both employees and employers should think for themselves and to little to the government in this country. Only as more is produced, is there more to divide. Wage workers need more employers and hence should encourage them.

Two Facts to Remember  
1. A pendulum must swing as long as the clock runs. This applies to labor's attitude, wages and hours, as

# Hughes Shows Complete Line Of Furniture

The Hughes Furniture Store, corner of Garnett and Montgomerystreets, is one of the old and established firms of the Henderson business section, carrying a full line of furniture for all rooms of the home, electrical appliances for the home, radios, stoves and similar necessities.

John M. Hughes, head of the firm, is perhaps the oldest furniture merchant in this part of the state, having been in this business for approximately a third of a century at Henderson. Recently, he has been joined in the store by his son, John M. Hughes, Jr., who came into the business following his graduation from The Citadel. The younger member of the firm is establishing himself as valuable aide to his father, and is showing himself to be an important addition to the group of rising young business men in the city.

Mr. Hughes announces that the store this fall is showing one of the most complete and attractive lines of furniture displayed at any time during its long history and that it is well prepared to care for the needs of its customers in any department of the store.

The store joins other Henderson business houses in inviting farmers of the territory to market their tobacco and cotton in Henderson and to ship for their needs in any line in this city. A personal welcome awaits each visitor at the store.

Members include Bill Knudsen, Sidney Hillman, Henry Stimson, Frank Knox and Leon Henderson. Now, if those chaps couldn't get along, can they agree as members of one committee? That remains to be demonstrated.

Bill Knudsen, Henry, Frank, and Harry are Vice President of the A. Wallace and Donald M. Hetherington OPM's director of the board.

It makes eight, according to my count, not seven. Henry Wallace is chairman, and Leon Henderson is a member of it, unless he is excluded.



As chief of Army General Headquarters, Lieut. Gen. Lesley J. McNair will direct the blitzkrieg in the Louisiana war games, directing the armored divisions, tank battalions, bombardment and pursuit groups and the parachute battalion. Some 472,000 troops will engage in the mock battle between the Second and Third Armies.

# 'SALE OF LEFT OVERS'

## From Our Great Removal Sale—Friday and Saturday

We have just completed the most successful sale in the history of our store. Hundreds—yes—hundreds of smart shoppers grasped the opportunity to save almost unbelievable amounts on Home Furnishings and all are more than satisfied with their purchases—but after every sale there are "left overs"—and the bigger the sale the more left overs. And the more left overs, the better values. So for the odd piece or that extra chair—or to furnish the extra room—be here, and see these values. You will be amazed and wonder how we can give such values. The answer—We don't want to clutter up our new store with one of a kind—odd pieces and floor samples. Simple enough, isn't it. W. O. LANGLEY, Mgr.

Group Of  
**TABLE LAMPS**  
Values to \$8.00

**\$1**

Group Of  
**PICTURES**  
Values to \$4.00

**\$1**

Group Of  
**PICTURES**  
Values to \$2.50

**69c**

Group Of  
**CABINET SMOKERS**  
In Walnut and Mahogany  
VALUES TO \$15.00  
—HALF PRICE!—

ANY PICTURE OR MIRROR  
—HALF PRICE!—

ANY HASSOCK OR OTTOMAN  
—HALF PRICE!—

- 1—Left Over \$ 19.50—26-PC. PRINCESS ROYAL SILVER SET \$12.95
- 6—Left Over \$ 3.95—CARPET SWEEPERS—Now \$ 2.95
- 1—Left Over \$ 12.50—TEA WAGON—Now \$ 5.95
- 6—Left Over \$ 1.95—PADDED TOP IRONING BOARDS \$ 1.19
- 4—Left Over \$ 17.50—FLOOR LAMPS—with ELECTRIC CLOCK \$11.95
- 1—Left Over \$ 25.00—SOLID MAPLE BED—Now \$12.50
- 1—Left Over \$ 65.00—BARREL BACK CHAIR—Now \$29.50
- 1—Left Over \$ 65.00—CHANNEL BACK CHAIR—Now \$29.50
- 3—Left Over \$ 8.00—Automatic DOUBLE ELECTRIC TOASTERS \$ 5.95
- 2—Left Over \$ 19.50—HAMILTON ROSS FOOD MIXERS \$ 9.95
- 1—Left Over \$ 19.50—MAPLE KNEE-HOLE DESK SET \$12.95
- 1—Left Over \$ 59.00—R. C. A. BATTERY RADIO \$22.50
- 1—Left Over —R. C. A. ELECTRIC CONSOLE RADIO \$22.50
- 3—Left Over \$ 5.95—GRASS RUGS—Now \$ 3.95
- 1—Left Over \$169.00—KROEHLER LIVING ROOM SUITE \$119.50
- 1—Left Over \$119.00—DUNCAN PHYFE SOFA \$89.50
- 1—Left Over \$ 49.50—MODERN SECRETARY \$29.50
- 2—Left Over \$ 14.50—CHILD'S DESK AND CHAIRS \$ 7.95
- 3—Left Over \$ 59.00—9 x 12 WOOL RUGS \$37.50
- 4—Left Over \$ 24.50—6 x 9 RUGS—Now \$17.50
- 3—Left Over \$ 59.50—BEDROOM SUITES \$49.50
- 1—Left Over \$ 29.50—WALNUT DRESSERS \$19.50
- 1—Left Over \$ 89.50—MODERN BEDROOM SUITE \$69.50
- 1—Left Over —Washmaster ELECTRIC WASHER \$29.50  
(SLIGHTLY USED—SOLD NEW FOR \$59.75)
- 1—Left Over \$ 49.50—5-BURNER OIL RANGE \$29.50
- 1—Left Over —USED BEDROOM SUITE—No w \$19.50
- Left Over —ASSORTMENT OF TABLES—Choice 79c  
(VALUES TO \$3.00)

Any Purchase on Convenient—Dignified—Payment Plan!

# CHRISTIAN HARWARD

## FURNITURE COMPANY, INC., HENDERSON, N. C.

**RUGGED WEARERS for BOYS**

HERE THEY ARE... Real boys' shoes that are sturdily built to see them through the active school days ahead. Big selection of styles!

**\$1.98**

100% LEATHER!  
Sturdy!  
Good-Looking!  
**\$1.59**

SIZES TO BIG 5 1/2

**KINNEY'S**

**EMBASSY**  
Friendly Service at All Times  
—TODAY—

**Three SONS O'GUNS**  
FRIDAY—SATURDAY

**TIME OUT FOR ANYTIME**  
An MILLER • Rudy VALLEE • Rosemary LANE

—COMFORT—  
**STEVENSON**  
BARGAIN DAY — 10c - 15c

—SHOWING—  
**Richard Arlen**  
**Andy Devine**  
Musical and News

FRIDAY - SATURDAY  
**3 MESQUITEERS**