

Victory At Midway Island Balked Jap Invasion Drive

With the Pacific Fleet, June 22—(AP)—There is no doubt now that the Japanese thrust at Midway Island early this month may be termed the battle for the invasion of America's West Coast.

(Official but reliable tabulation today indicates Japan's abortive bid for new power utilized a force which could have regarded Midway Island itself as the smallest of pawns.

This force included four battleships, five aircraft carriers, eight cruisers plus destroyers, submarines, transports, tankers and seaplane tenders.

The Japanese armada was strung out for hundreds of miles, creeping toward its first tiny goal when carrier planes of the United States Fleet and land-based aircraft of the Army launched their most amazing counter-attack.

Within three days this unprecedentedly large long-range invasion force had been scattered over a large area of the Pacific.

U. S. Claims Conservative

Exactly how much of it ever got home may never be determined. It can be said, however, that from the standpoint of an observer at the scene of action, the American communications on losses to the enemy have been most conservative.

(The Navy communicates indicated at least two Japanese aircraft carriers and a destroyer were sunk, two other aircraft carriers possibly sunk, and 10 craft, including three battleships, damaged. Some of the damaged ships were regarded as probably destroyed.)

Midway, the immediate objective of this invading force, is only a Naval hop, skip and jump from Hawaii, and from Hawaii to the United States West Coast is not far compared to the reach of modern war.

Modern war in dramatic phases characterized the battle of Midway. Torpedo planes, dive bombers, heavy bombers and fighters—it was these which told the story.

Had air superiority been lost, surface ships of course could have gone into close-up action in a last-ditch stand against the invaders. But that never became necessary.

Ships, which fought off repeated aerial attacks in their necessary supporting role to the carriers, kept up a merry pursuit of the harried enemy, but each time they caught up with the last scene of action there was nothing left for them to fight.

On Separate Patrol The sinking of a destroyer, the only American vessel announced as lost in the engagement, did not come in the prime phase of the battle. The destroyer was torpedoed while on separate patrol.

The damaging of an American aircraft carrier was the finale of Japan's bid for power in the Midway area. The carrier weathered two attacks and within three hours after the last one there were no enemy carrier planes reported in the whole area.

The full import of the far-flung engagement, extending over hundreds of thousands of square miles of the Pacific, was hard to grasp at the time of the action.

FSA Clients Show Increase In Earnings

Raleigh, June 22.—Thousands of farm families, in the low income group who did not produce enough food for their own livelihood before coming on the Farm Security Administration program, are now able to produce a surplus for market and thus contribute substantially to the food-for-victory program, said Vance E. Swift, FSA state director.

Swift pointed to figures which show that FSA borrowers in North Carolina made a 62 per cent increase in net earnings last year and have almost doubled their food production. The average FSA borrower in North Carolina increased his milk production for home use from 251 gallons before acceptance on the program to 323 gallons in 1941, or 78 per cent; fruits and vegetables canned increased from 135 to 294 quarts, or 118 per cent; and meat and poultry increased from 333 pounds to 655, or 97 per cent. The figures are average for the state and are taken from the annual, nationwide survey made at the end of each year, based on reports from county offices.

Last year the average North Carolina family also stored an additional 37 bushels of fruits and vegetables and produced and used 143 dozen eggs and 13 gallons of lard. Families represented are low-income and financially handicapped farmers unable to secure adequate credit elsewhere to carry on effectively. Loans are made through county FSA supervisors who assist the borrowers in making out their farm plans and help them to improve their farms and their farming methods. More than 29,700 families are now being reached by FSA loans in North Carolina, including some 1,900 former tenants who are buying farms through the Farm Security tenant purchase program.

Cotton Prices Fluctuate

Cotton prices fluctuated within a wide range this week and advanced 1.10 a bale. Activity in spot markets decreased. Domestic mills during the first half of June apparently continued to operate at or close to record high levels. Prices of other commodities strengthened and securities declined slightly. The weather was reported most favorable to the cotton crop, although wet weather and low temperatures favored weevil activity in some areas. The ten market average price of 18.84 cents for middling 15-16 on Friday, June 19, was 22 points higher than a week ago and compared with 14.09 a year ago.

NEW INSTRUCTORS

Greensboro, June 22.—Recently appointed members of the Greensboro College faculty are Mrs. Oliver Perry, as associate professor of speech and dramatic art and acting head of that department, and Dr. Mary E. Humphreys, assistant professor of biology, according to announcement by Dr. Luther L. Gobel, president.

KILLED BY LIGHTNING

Warrenton, June 22.—Robert Davis, colored man of near Warrenton, was killed outright by lightning late Friday afternoon during a severe storm. It was stated he had just put his baby down on a bed and walked across the floor to the bedroom when he was struck.

NORTH CAROLINA STOCKS

Table with columns: Description, Bid, Asked. Lists various stocks like Majestic Mtg Co. Com, May, McEwen Kaiser Co., etc.

BARCLAY ON BRIDGE By Shepard Barclay

SHOWING GREAT LENGTH MORE AND more fine players are refraining from using an informative double when they have appreciable length in two suits, but show one of the two suits at once. If the hand is strong enough, they do it with a jump of one more than necessary to overcall the opponent's bid. By thus showing an unbalanced hand to their partners, they encourage suit showing in response, instead of No Trumps when possible stoppers of the hostile suit are held.

Bridge hand diagram showing cards in North, South, West, and East hands. Includes a 'Your Week-End Lesson' section.

Feed Markets Much Higher

Raleigh, June 22.—Feed markets were unsettled but advanced sharply during the week ending June 16, according to the U. S. and North Carolina Departments of Agriculture in the weekly market news service review.

A scarcity of wheat feeds and a very active inquiry from feeders and mixed feed manufacturers for spot deliveries caused milled feeds to advance to the highest level in recent weeks. Oiled corn and meals were also higher with the sharpest advance in soybean meal pending further government action in respect to price ceilings. The index number of wholesale feedstuff prices advanced nearly 5 points to 164.6 compared with 161.8 for the previous week and 117.8 for the corresponding week last year.

Prices of farmers stock peanuts in North Carolina and Virginia continued to sag although millers and warehousemen are buying very little, pending a settling of market levels. Spanish farmers stock is nominally \$1.75 per 30-pound bushel and best Virginia farmers stock is around 5-1-2 to 6 cents per pound. Meanwhile, rainfall during the past week was helpful to the growing crop of peanuts, especially the late planted stand.

Showing the first seasonal decline in 3 months, creamery butter production for the week ending June 11 was 2 percent lower than in the previous week for the corresponding week of 1941 only a fractional seasonal decline occurred. Wholesale values of 92 score in New York closed at 36 3-4 cents per pound, unchanged from a week ago.

Strictly good and choice medium weighty steers closed 15 to 25 cents lower and spring and shorn lambs dropped 25 to 40 cents in Chicago. Hog values, however, finished 10 to 25 cents higher. A similar swine upturn developed on the Carolina and Virginia outlets. Tops for good and choice offerings closed at \$13.25 in Rocky Mount and at \$13.50 at Richmond, up a quarter while the Clinton and Lumberton outlets picked up 20 cents and the Fayetteville and Florence markets a dime to \$13.50.

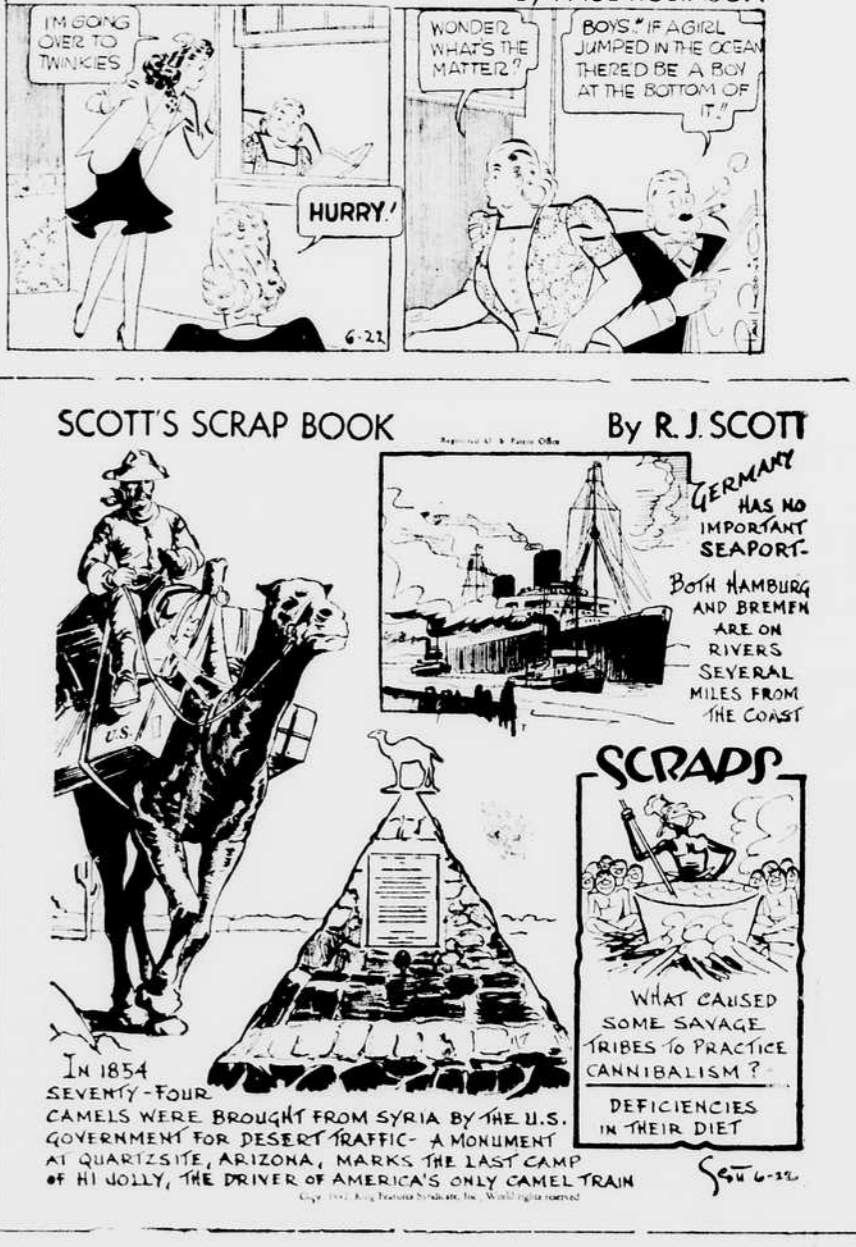
THIMBLE THEATRE—Starring Popeye



ETTA KETT



SCOTT'S SCRAP BOOK By R.J. SCOTT



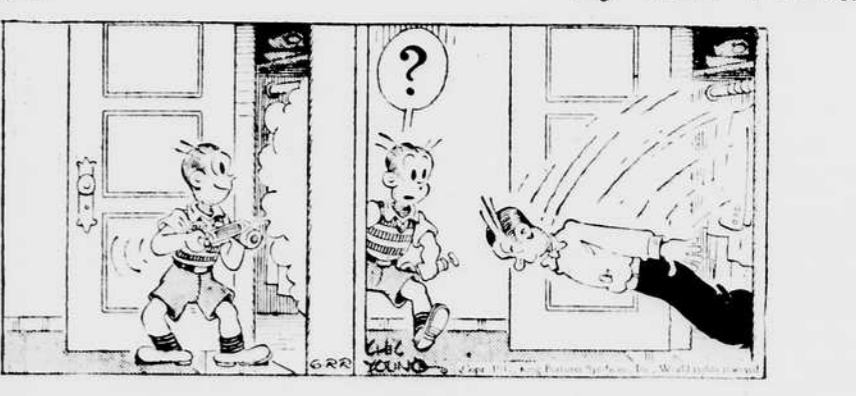
THE OLD HOME TOWN By STANLEY



BLONDIE—(Registered U. S. Patent Office)



Bull's Eye! By Chic Young



DAILY CROSSWORD

- ACROSS: 1. Cabbage salad, 5. An astrigent, 9. Part of church, 10. White frost, 11. Whipped, 12. Fossil resin, 14. Chests, 15. Greek letter, 16. Foxy, 17. Male swan, 20. Free, 21. Masculine pronoun, 22. Wheel on a spur, 24. Nickel (sym.), 25. Stick together, 27. Shakespearean character, 29. Tree, 30. Away, 31. Prophet, 33. Marked with scars, 36. Farm animal, 37. Arms of windmills, 39. Father, 40. Polish, 42. Grass cured for fodder, 43. Clamor, 44. Wicked, 46. Mark, 47. Begat, 49. Harass, 50. Jewish month, 51. Seaweed, 52. Catch sight of, 53. Suppose. DOWN: 1. Growled angrily.

Crossword puzzle grid with numbers indicating starting positions for across and down words.

CRYPTOQUOTE—A cryptogram quotation

AKZWPVDVDM STM QDDV BDZZ YD-XWVDY TM QDQDKZDVJD WV MGTZZ PSWVEV—GTJTHZTL

Saturday's Cryptoquote: KNOW THAT TO REALLY ENJOY PLEASURES YOU MUST KNOW HOW TO LEAVE THEM—VOLTAIRE.

THE GUMPS—SOUR GRAPES

