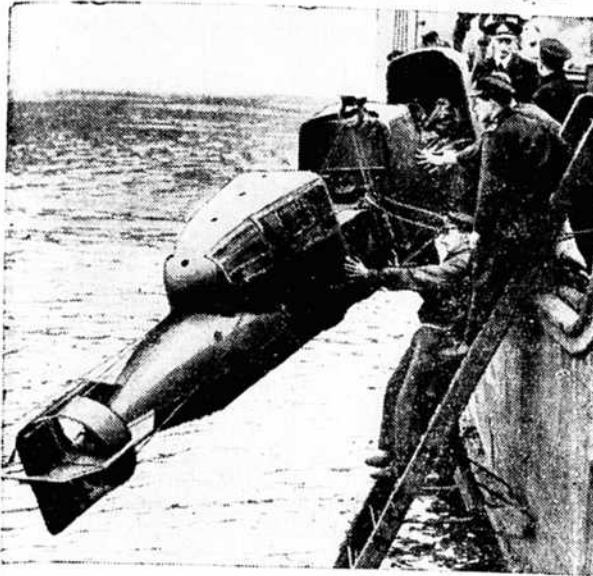


Nazi Lines Crumbling In Italy

LAUNCHING A 'HUMAN TORPEDO'



HERE'S A CLOSEUP of one of the "human torpedoes" used by the British Navy as it is lowered over the side of a vessel to the water.

U.S. Pouring Materials Into Britain

Supplies Are Sent For Three-Way Blow To Defeat Germans

Washington, May 22.—(AP)—Lend-lease arms and equipment to power a three-way invasion attack at Europe are moving out of this country at a steadily growing speed, President Roosevelt told Congress today.

United Nations forces are now about to strike west and northward from North-western Europe from offensive bases in the west, the south and the east, the President said as he submitted the fifteenth report on lend-lease operations.

The report shows \$21,255,000,000 worth of equipment, services and supplies have gone from this country's lend-lease arsenal, nearly three-fourths to Britain and Russia.

China is being helped by the gift of our ability, Mr. Roosevelt said, but the report itself shows the supplies being thrown into that country are only a trickle compared with the flood of equipment being sent before the Nazi front.

More than one billion dollars in planes and parts, a like amount of guns and ammunition and almost that value in tanks and other vehicles have gone to the United Kingdom—three-fourths of them in the past year. British bombers are dumping American-made charges on Germany and American fighters roar up from the decks of British carriers.

The report showed a mounting total of reverse lend-lease.

NAZI GENERAL BAGGED IN RAID



GEN. HEINRICH KREIPE, commander of the Nazi 22nd Panzer Division in Crete, is questioned by British officers in Cairo after he was kidnapped from Crete on April 26 in one of the most daring exploits of the war.

Americans Occupy Terracina, Anchor Point Of Germans

Germans Offering Slight Resistance In Many Localities

United States troops established a line 1,000 to 5,000 yards from 5.5 to 3 miles northeast of Terracina as the Germans threw in fresh troops, headquarters declared, and the Germans were reported fiercely resisting a renewed American thrust southwest of Pico in the center of the front.

To the northwest, one battery guarding the Liri valley approach to

AMERICANS DRIVEN BACK

Allied Headquarters, Naples, May 22.—(AP)—American troops who entered Terracina, German coastal anchor on the Italian west coast, have been driven back, it was announced today.

United States troops established a line 1,000 to 5,000 yards from 5.5 to 3 miles northeast of Terracina as the Germans threw in fresh troops, headquarters declared, and the Germans were reported fiercely resisting a renewed American thrust southwest of Pico in the center of the front.

Headquarters declared the Germans now have seventeen divisions committed against the main offensive and have "nothing left in reserve south of Rome."

French troops toward the center took, lost and then recaptured today Monte Lencio, west of Pico, and on the road from Pontecorvo, Canadians penetrated the Hitler line northeast of Pontecorvo on the lower edge of the Liri valley, piercing barbed wire entanglements, headquarters said.

Rome was bombed and another port under siege, while fifth army men hammered toward the pivot town of Tico.

Only light German rear guards, including non-combat units, defended Terracina, coastal end of the Nazis' third southern defense wall—and beyond lay the Pontine marshes and the fifth army troops, massed on the Anzio beachhead. The fleeing Nazis hid their movements around the eastern bank of that beachhead with smoke screens.

Part of the eighth army burst into Piedmonte on the north side of the Liri valley, west of Cassino, and were mopping up trapped Germans.

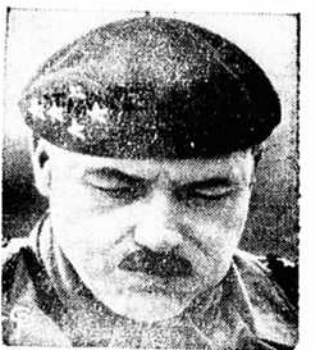
At the lower end of the valley, the Allies cut into the outskirts of Pontecorvo, and in the center of the Italian front cut the Pontecorvo-Teramo road, seizing Monte Lencio and driving toward Tico itself.

The German command, suggesting Tico might already have fallen, broadcast that Allied troops have broken into the town repeatedly, but had been thrown back. It acknowledged heavy pressure at Pontecorvo, and said the Allies had been repelled northwest of that city, with Allied bridgeheads set up across

the river.

(Continued on Page Five)

Battering the Nazis



Gen. Alphonse Juin

THE SPEED and daring now being displayed by French troops in pushing the Germans back in Italy has been compared by their commander, Gen. Alphonse Juin, to the enthusiasm of the untrained French soldiers who drove the enemy from France in the days of the Revolution at the battle of Valmy in September, 1792. That encounter led to the decisive French offensive in Belgium. (International)

Vital Roads Seized In Burma Fight

Great Jap Base Of Myitkya Already Largely Occupied

Southeast Asia Headquarters, Kuala Lumpur, May 22.—(AP)—Allied forces, advancing through deep mud and monsoon rains, hammering the battle for Myitkya, great Japanese base in northern Burma, already one-third in Allied hands, have won control of the junction of roads fanning west and north to Mong Hsat and Fort Bertz, it was announced today.

A route has been established through the mud and rain to Myitkya, great Japanese base in northern Burma, already one-third in Allied hands, have won control of the junction of roads fanning west and north to Mong Hsat and Fort Bertz, it was announced today.

A route has been established through the mud and rain to Myitkya, great Japanese base in northern Burma, already one-third in Allied hands, have won control of the junction of roads fanning west and north to Mong Hsat and Fort Bertz, it was announced today.

A route has been established through the mud and rain to Myitkya, great Japanese base in northern Burma, already one-third in Allied hands, have won control of the junction of roads fanning west and north to Mong Hsat and Fort Bertz, it was announced today.

A route has been established through the mud and rain to Myitkya, great Japanese base in northern Burma, already one-third in Allied hands, have won control of the junction of roads fanning west and north to Mong Hsat and Fort Bertz, it was announced today.

(Continued on Page Five)

North Carolina Joins Parade Of States That Do Voting This Week

(By The Associated Press.) Selection of convention delegates starts rolling down the home stretch this week, with Governor Thomas L. Dewey of New York setting a fast pace for the Republican nomination and President Roosevelt coasting along with the Democratic nomination assured him if he wants it.

Six states will select delegates, beginning with Texas, Democratic and Republican conventions tomorrow. Florida will settle its gubernatorial contest with a run-off Democratic primary and North Carolina will pick a Democratic senatorial nominee to succeed Senator Reynolds, Democrat, who did not choose to run.

The Texas Democratic meeting, bringing fourth-term and anti-progressives into a collision over the state's fire works, the Republicans will pick 33 delegates, with Dewey and

Governor John W. Hatcher of Ohio showing strength. Maryland and Georgia Republicans also will select delegates tomorrow. The odds were that most, if not all, the 16 Maryland delegates will be for Dewey. Georgia will pick a slate of 11, with one district representative already having been sewed up for the New Yorker.

Wednesday will find North Dakota Republicans picking eleven delegates, who may be unopposed.

Connecticut Democrats will start a two-day meeting Friday, picking a delegation that will cast 18 votes.

Utah Democrats will name ten Saturday. The same day North Carolina members of the party nominate a successor for Reynolds, pick their candidates for governor and name choices for thirteen seats in the House of Representatives in a primary that will leave the November election only a formality, unless it is preceded by a political earthquake.

Home Stretch This Week May Be Rough Road For State's Political Wars

Daily Dispatch Bureau By LYNN NISBET

Raleigh, May 22.—Sometimes political campaigns are covered as if they were a race. The home stretch the last few days, but this one is different. Developments over the week-end indicate that the last few days may be the roughest of the whole period. A new law for North Carolina seems to have been reached in political advertising.

Louisiana, Illinois, Georgia, maybe South Carolina, have long observed the custom of political candidates engaging not their opponents, rather than giving any constructive reason why they themselves should be chosen for office.

The idea has been suggested in other campaigns. Your correspondent has personal knowledge of two incidents in 1940. In one case a county manager for Maxwell thought he had something very derogatory of the reputation of Broughton, Maxwell positively forbade its use. In another, Broughton county manager thought he had some hot stuff on Horton. Broughton stopped it before it got started. It is generally conceded that the 1940 campaign was conducted on perhaps the highest level of any in recent years.

This time it is different. A major part of the McDonald strategy has been to attack Cherry, and within the past few days the attack has spread to include his campaign manager, former Congressman Bill Unstead. It is understood that more of the same—and worse—is on the program for this week. Opinion around Capitol Square is that this method of campaigning is not productive of votes, unless perchance

it makes vote for the persons attacked. On the other hand it is regarded as wasted effort and wasted money.

And pouring of money, there has been a lot of whispered talk about McDonald, admitting from large expenditures by the CIO political action committee, and of Cherry having access to big money from industrial sources. There has been an unusually extensive newspaper advertising campaign by both candidates, and that too is money. Experienced political workers and observers, however, report that there is less evidence of money used for poll workers, or more carefully stated for "buying votes," in this campaign than had been expected.

Undoubtedly the reason for this condition is that more folks have good jobs now than in any previous election year, and they have no time to devote to political activity. On the upside were Southern Railway, United States Steel, Chrysler, General Motors and United States Rubber.

Bonds and commodities were narrow.

Stocks Show Mild Advance

New York, May 22.—(AP)—Stocks generally exhibited mild upward movements in today's market, although, as in the past week or so, many leaders failed to do much in the way of progress.

On the upside were Southern Railway, United States Steel, Chrysler, General Motors and United States Rubber.

Bonds and commodities were narrow.

Swede Firms May Be Put On Blacklist

Washington, May 22.—(AP)—The State Department made known today that a considerable number of Swedish firms is being investigated for blacklisting and action against them probably will be taken within the next few days.

This information came out in connection with a statement by the Department that no firm "has been or will be included in the proscribed list merely because reasons of pressure may exist by reason of American necessities."

Today's announcement was the latest in a series of developments stemming from the efforts of the United States, Britain and Russia to persuade Sweden to stop sending ball-bearing to Germany. The famed Swedish ball-bearing manufacturer is the SKF firm which has American affiliates at Philadelphia and New York.

SKF has been under investigation and its name was not on other list of companies which the State Department said are not now being investigated.

Poultry Output May Be Ordered Cut by the WFA

Washington, May 22.—(AP)—Faced with possibly an acute feed shortage, the War Food Administration may act soon to curtail the hatching of chicks and the starting of commercial broilers during June, July and August.

It also may ask farmers to produce fewer pigs this fall than previously recommended under a 1941 food production program, and to inaugurate immediately a dairy cattle culling program.

Walter C. Berger, chief of the livestock and feed branch of the WFA's office of production, described the feed supply situation as "acute" in an interview. Reserves of livestock feed held at the beginning of the war have been used up, and now it is necessary, he said, to make drastic adjustments to lower feed supply levels.

Berger suggested that chicken hatcheries close down during June, July and August, that producers of commercial broilers start no new broilers during those months and that laying flocks be reduced 27 percent between now and August.

It may be necessary, he said, for the WFA to issue orders requiring such curtailment.

American Bombers Continue Pounding Of The Continent

Marcus Island, Nearer Japan, Is Attacked

London, May 22.—(AP)—A Japanese communiqué broadcast by Tokyo radio today said that "enemy naval units," approaching from the east, launched aerial attacks Saturday and Sunday against the central Pacific Atoll group, 1,200 miles southeast of Tokyo.

Damage to Japanese installations was acknowledged in the broadcast picked up by the Associated Press and 32 raiding planes were shot down.

Minamitoro, or Marcus Island, is about midway between the Marshall Islands and the Japanese mainland, and 600 miles east of the main islands of the Bonin group. It has been attacked before by United States fleet units.

Believe FDR Has Settled On Wallace

Washington, May 22.—(AP)—Vice President Wallace's trip to Siberia and China took on new political aspects today with a growing feeling among some of his possible opponents that the incumbent already has been chosen by President Roosevelt for second place on the 1944 Democratic ticket.

One of several members of Congress who have been mentioned frequently for the vice presidential nomination today reported he now convinced that Mr. Roosevelt intends to be a candidate again and will say the word in time which will place Wallace on the ticket with him.

This legislator, who has been making heart-to-heart speeches for several months, said that nowhere in his travels had he found any great political support for Wallace.

Wallace left Saturday for Siberia and China to get what President Roosevelt said was likely to be a valuable first-hand report on conditions in Asia. He called Wallace well qualified for such a mission because of his present position as well as his training in economics and agriculture.

The announcement said specifically that Wallace would be back by the middle of July which would be a few days before the Democratic convention opens in Chicago July 19.

By Day and Night Invasion District Is Being Strafed

London, May 22.—(AP)—Flying Fortresses bombed the German submarine center of Kiel, and U. S. Liberators pounded German fortifications in the Pas-de-Calais area of France today after a night in which 750 heavy British bombers saturated the major inland Nazi port of Duisburg with 2,500 tons of explosives.

The south-ward daylight blow covered the newest Allied aerial raid by the western invasion fleet 20 hours of continuous day-night attacks.

The 2nd Flying Fortresses and the same number of Liberators, each group protected by swarms of American fighters, led the dawn assault.

Heavy incendiary and rubber center and a German air field in Belgium were other British targets of the night.

In all, some 2,000 Allied planes, most of them fighters, sprayed nearly every moving piece of Nazi transport sighted in western Europe yesterday with cannon and machine gun fire. These fighters swept and the RAF knife blows dove tailed into the Allied strategy aimed at crippling Germany's movement of troops and supplies to combat

(Continued on Page Five)

Fresh Instructions To French By Eisenhower

London, May 22.—(AP)—General Dwight D. Eisenhower's supreme headquarters told the people of occupied countries today how they should help the invasion armies by providing accurate knowledge about roads, bridges, rivers, woods and possible landing fields.

The broadcast came after a German threat of "terrible and bloody reprisals" against any French subjects who help Eisenhower's press-visits call to take up arms and help the invasion forces.

A member of Eisenhower's staff told the radio listeners: "Listen carefully. For some time you have been receiving from voices already well known to you advice and instruction on how to prepare yourselves for the final phase of the struggle for liberation."

"The supreme commander wishes you to know that what you have heard is in accord with his plans and wishes. In due course, you will receive advice and instructions from the supreme commander himself. In the meantime, he directs you to

continue to note well and to act on advice and instructions by agencies whom I introduce in my broadcast.

"Now, here is a speaker to give you the general operational instructions."

"The speaker says: The importance of every one having the fullest knowledge of his or her own surroundings. This applies to towns and country. Allied forces will repeatedly want information. Some of them will want guides. It is very important that this information shall be accurate and that guides shall be quite certain of the way by day or night."

"Anyone might be wanted to question about roads, woods, bridges and possible spaces for landing aircraft."

"Lastly, giving full instructions late being dropped from aircraft. The Germans may scatter fake leaflets. You can recognize the Allied leaflets because they duplicate the instructions just given you."

"The threat of reprisals against those who help the Allies came from the Vichy radio."

Cotton Tilts Forward Some

New York, May 22.—(AP)—Cotton futures contracts showed a bale higher in most grades today. Noon values were 10 to 15 cents a bale higher, July 2000, October 1904, December 1904.

Table with columns: Month, Price, Change. Rows for July, October, December, March, May.

WEATHER FOR NORTH CAROLINA Partly cloudy and continued warm tonight and Tuesday.