

# HENDERSON DAILY DISPATCH

FIFTY-FIRST YEAR

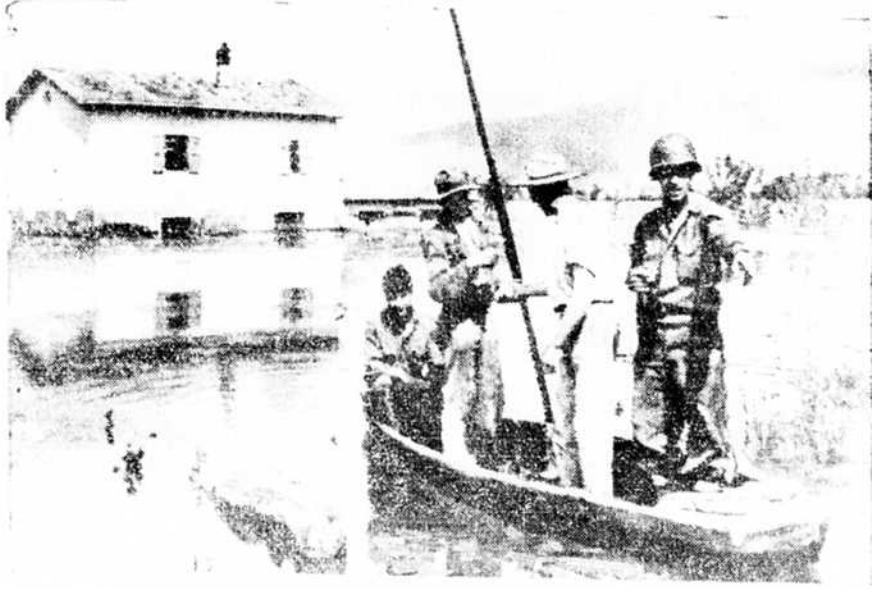
LARGEST WIDE SERVICE OF THE ASSOCIATED PRESS

HENDERSON, N. C., FRIDAY AFTERNOON, JUNE 2, 1944

PHONE 100, 101, 102, 103, 104, 105, 106, 107, 108, 109, 110, 111, 112, 113, 114, 115, 116, 117, 118, 119, 120, 121, 122, 123, 124, 125, 126, 127, 128, 129, 130, 131, 132, 133, 134, 135, 136, 137, 138, 139, 140, 141, 142, 143, 144, 145, 146, 147, 148, 149, 150, 151, 152, 153, 154, 155, 156, 157, 158, 159, 160, 161, 162, 163, 164, 165, 166, 167, 168, 169, 170, 171, 172, 173, 174, 175, 176, 177, 178, 179, 180, 181, 182, 183, 184, 185, 186, 187, 188, 189, 190, 191, 192, 193, 194, 195, 196, 197, 198, 199, 200

LIVE CENTS A COPY

## AFTER NAZIS FLOODED PONTINE MARSHES IN ITALY



A COUPLE OF ITALIANS help an Allied soldier's boat afloat in the Pontine Marshes after they had been flooded by the Germans in an effort to stem the advance upon Rome. An report of the Italian Army from the front, Gen. Mark Clark recalled "before many days have passed, we shall have freed the rest of the European capital from Nazi tyranny." Official U. S. Army Signal Corps Radiophoto. (Internationally)

# German Escape Route Cut Invasion Coast Badly Hit

## Bombing Of Calais Area Worst Yet

Bombers Strike on Line From Norway Southeast to Crete

London, June 2 (AP)—The United States and British bombers made the heaviest single-day attack against the German coast wall in full force on the French coast, bombing southeast of 700 Paris and liberating and several hundred miles again, the Far de Calais department.

The Far de Calais region, including the most intensely bombed area in the world to date, is a coastal strip only seven miles wide, the channel from England, where General Eisenhower's invasion army is massed and camped. The department extends 50 miles into the French interior and about 25 miles of the coast and contains such familiar points as Calais, the World War I battlefront port of Boulogne, the French port of Dunkirk, and Capriary, the terminal for channel steamers.

The Far de Calais region, including the most intensely bombed area in the world to date, is a coastal strip only seven miles wide, the channel from England, where General Eisenhower's invasion army is massed and camped. The department extends 50 miles into the French interior and about 25 miles of the coast and contains such familiar points as Calais, the World War I battlefront port of Boulogne, the French port of Dunkirk, and Capriary, the terminal for channel steamers.

The Far de Calais region, including the most intensely bombed area in the world to date, is a coastal strip only seven miles wide, the channel from England, where General Eisenhower's invasion army is massed and camped. The department extends 50 miles into the French interior and about 25 miles of the coast and contains such familiar points as Calais, the World War I battlefront port of Boulogne, the French port of Dunkirk, and Capriary, the terminal for channel steamers.

The Far de Calais region, including the most intensely bombed area in the world to date, is a coastal strip only seven miles wide, the channel from England, where General Eisenhower's invasion army is massed and camped. The department extends 50 miles into the French interior and about 25 miles of the coast and contains such familiar points as Calais, the World War I battlefront port of Boulogne, the French port of Dunkirk, and Capriary, the terminal for channel steamers.

The Far de Calais region, including the most intensely bombed area in the world to date, is a coastal strip only seven miles wide, the channel from England, where General Eisenhower's invasion army is massed and camped. The department extends 50 miles into the French interior and about 25 miles of the coast and contains such familiar points as Calais, the World War I battlefront port of Boulogne, the French port of Dunkirk, and Capriary, the terminal for channel steamers.

The Far de Calais region, including the most intensely bombed area in the world to date, is a coastal strip only seven miles wide, the channel from England, where General Eisenhower's invasion army is massed and camped. The department extends 50 miles into the French interior and about 25 miles of the coast and contains such familiar points as Calais, the World War I battlefront port of Boulogne, the French port of Dunkirk, and Capriary, the terminal for channel steamers.

The Far de Calais region, including the most intensely bombed area in the world to date, is a coastal strip only seven miles wide, the channel from England, where General Eisenhower's invasion army is massed and camped. The department extends 50 miles into the French interior and about 25 miles of the coast and contains such familiar points as Calais, the World War I battlefront port of Boulogne, the French port of Dunkirk, and Capriary, the terminal for channel steamers.

The Far de Calais region, including the most intensely bombed area in the world to date, is a coastal strip only seven miles wide, the channel from England, where General Eisenhower's invasion army is massed and camped. The department extends 50 miles into the French interior and about 25 miles of the coast and contains such familiar points as Calais, the World War I battlefront port of Boulogne, the French port of Dunkirk, and Capriary, the terminal for channel steamers.

## ARMY RATIONS FOR D-DAY SOLDIER



FIFTY AMERICAN SOLDIER RATIONS FOR D-DAY, showing the variety of food items that a soldier would receive during the invasion.

## Velletri Is Entered By U. S. Troops

Other Velletri Area Also Taken Into Nazis' Rome Lines

AP—Velletri, 30 miles from Rome, was captured by U. S. troops today, the first town in the area to fall to the Americans. The town was entered by the 34th Infantry Division, which had been ordered to move on from the beachhead.

The capture of Velletri is a significant blow to the German defenses in the Rome area. It opens up a new route for the American advance and forces the Germans to divert resources to the defense of the city.

The capture of Velletri is a significant blow to the German defenses in the Rome area. It opens up a new route for the American advance and forces the Germans to divert resources to the defense of the city.

The capture of Velletri is a significant blow to the German defenses in the Rome area. It opens up a new route for the American advance and forces the Germans to divert resources to the defense of the city.

The capture of Velletri is a significant blow to the German defenses in the Rome area. It opens up a new route for the American advance and forces the Germans to divert resources to the defense of the city.

The capture of Velletri is a significant blow to the German defenses in the Rome area. It opens up a new route for the American advance and forces the Germans to divert resources to the defense of the city.

The capture of Velletri is a significant blow to the German defenses in the Rome area. It opens up a new route for the American advance and forces the Germans to divert resources to the defense of the city.

The capture of Velletri is a significant blow to the German defenses in the Rome area. It opens up a new route for the American advance and forces the Germans to divert resources to the defense of the city.

The capture of Velletri is a significant blow to the German defenses in the Rome area. It opens up a new route for the American advance and forces the Germans to divert resources to the defense of the city.

The capture of Velletri is a significant blow to the German defenses in the Rome area. It opens up a new route for the American advance and forces the Germans to divert resources to the defense of the city.

The capture of Velletri is a significant blow to the German defenses in the Rome area. It opens up a new route for the American advance and forces the Germans to divert resources to the defense of the city.

## Sweeping Controls Over U.S. Manpower Ordered By McNutt

Washington, June 2 (AP)—Sweeping controls over the nation's manpower resources were ordered today by the War Relocation Authority. The new regulations, which will be in effect by June 15, are designed to prevent the loss of essential workers to the war effort.

The new regulations, which will be in effect by June 15, are designed to prevent the loss of essential workers to the war effort. They will require employers to report the names and addresses of all workers in their plants and to provide information on their work schedules.

The new regulations, which will be in effect by June 15, are designed to prevent the loss of essential workers to the war effort. They will require employers to report the names and addresses of all workers in their plants and to provide information on their work schedules.

The new regulations, which will be in effect by June 15, are designed to prevent the loss of essential workers to the war effort. They will require employers to report the names and addresses of all workers in their plants and to provide information on their work schedules.

The new regulations, which will be in effect by June 15, are designed to prevent the loss of essential workers to the war effort. They will require employers to report the names and addresses of all workers in their plants and to provide information on their work schedules.

The new regulations, which will be in effect by June 15, are designed to prevent the loss of essential workers to the war effort. They will require employers to report the names and addresses of all workers in their plants and to provide information on their work schedules.

The new regulations, which will be in effect by June 15, are designed to prevent the loss of essential workers to the war effort. They will require employers to report the names and addresses of all workers in their plants and to provide information on their work schedules.

## A Good Outlaw



PREPARING to take off from a South Pacific Island, Lt. Col. G. C. Outlaw, R.C. Outlaw, Goldsboro, N.C., who recently led a flight of eight carrier-based U. S. planes that caused a 21-0 air victory over the Japs at Puka. He is pictured here with his family, Navy photo. (Internationally)

## Idle Drivers In St. Louis Facing Draft

St. Louis, Mo., June 2 (AP)—Some of the 2,000 street car operators and bus drivers on a two-day strike, which has affected 100,000 St. Louisans, will be classified as "idle" and their draft boards have decided.

The draft boards have decided that some of the 2,000 street car operators and bus drivers on a two-day strike, which has affected 100,000 St. Louisans, will be classified as "idle" and their draft boards have decided.

## Pepe Against Total Victory As Dangerous

London, June 2 (AP)—Pope Pius XII, in a speech to the college of cardinals, expressed the hope today that peace soon would appear on Rome's hills, but added that a demand for total victory might produce the war.

Pope Pius XII, in a speech to the college of cardinals, expressed the hope today that peace soon would appear on Rome's hills, but added that a demand for total victory might produce the war.

Pope Pius XII, in a speech to the college of cardinals, expressed the hope today that peace soon would appear on Rome's hills, but added that a demand for total victory might produce the war.

## Carbon Monoxide Overcomes Other Brooklyn People

New York, June 2 (AP)—A gas leak from a boiler in a Brooklyn apartment house today overcame other people in the building.

A gas leak from a boiler in a Brooklyn apartment house today overcame other people in the building. The incident occurred in the early morning hours of the day.

## Plane Output Is 175,000, FDR States

Washington, June 2 (AP)—The United States today produced 175,000 aircraft, President Franklin D. Roosevelt said today.

The United States today produced 175,000 aircraft, President Franklin D. Roosevelt said today. This represents a significant increase in production since the start of the war.

The United States today produced 175,000 aircraft, President Franklin D. Roosevelt said today. This represents a significant increase in production since the start of the war.

## Americans Massing For All-Out Drive Upon Jap Positions

### Far Fl. of Pilots Lead Attack Upon Jap Biak Island

Headquarters, Far Eastern Air Force, Submarine Force, June 2 (AP)—A "detached" A-24 Liberator bomber force, the 4th Composite Group of the 11th Air Force, was the first to lead the attack upon Biak Island in the American Borneo May 2. It pointed with other 120 A-24 Liberator bombers on a mission to destroy the island's air base.

The 4th Composite Group of the 11th Air Force was the first to lead the attack upon Biak Island in the American Borneo May 2. It pointed with other 120 A-24 Liberator bombers on a mission to destroy the island's air base.

The 4th Composite Group of the 11th Air Force was the first to lead the attack upon Biak Island in the American Borneo May 2. It pointed with other 120 A-24 Liberator bombers on a mission to destroy the island's air base.

The 4th Composite Group of the 11th Air Force was the first to lead the attack upon Biak Island in the American Borneo May 2. It pointed with other 120 A-24 Liberator bombers on a mission to destroy the island's air base.

The 4th Composite Group of the 11th Air Force was the first to lead the attack upon Biak Island in the American Borneo May 2. It pointed with other 120 A-24 Liberator bombers on a mission to destroy the island's air base.

The 4th Composite Group of the 11th Air Force was the first to lead the attack upon Biak Island in the American Borneo May 2. It pointed with other 120 A-24 Liberator bombers on a mission to destroy the island's air base.

The 4th Composite Group of the 11th Air Force was the first to lead the attack upon Biak Island in the American Borneo May 2. It pointed with other 120 A-24 Liberator bombers on a mission to destroy the island's air base.

### Aim Planes Massed Against Landing in West Pacific Area

Headquarters, Far Eastern Air Force, June 2 (AP)—The 11th Air Force today massed its A-24 Liberator bombers for an all-out attack upon the Japanese landing area in the West Pacific area.

The 11th Air Force today massed its A-24 Liberator bombers for an all-out attack upon the Japanese landing area in the West Pacific area. The planes were positioned for a rapid response to any Japanese landing.

The 11th Air Force today massed its A-24 Liberator bombers for an all-out attack upon the Japanese landing area in the West Pacific area. The planes were positioned for a rapid response to any Japanese landing.

The 11th Air Force today massed its A-24 Liberator bombers for an all-out attack upon the Japanese landing area in the West Pacific area. The planes were positioned for a rapid response to any Japanese landing.

The 11th Air Force today massed its A-24 Liberator bombers for an all-out attack upon the Japanese landing area in the West Pacific area. The planes were positioned for a rapid response to any Japanese landing.

The 11th Air Force today massed its A-24 Liberator bombers for an all-out attack upon the Japanese landing area in the West Pacific area. The planes were positioned for a rapid response to any Japanese landing.

The 11th Air Force today massed its A-24 Liberator bombers for an all-out attack upon the Japanese landing area in the West Pacific area. The planes were positioned for a rapid response to any Japanese landing.

## Over 1,400 Heavy Bombers Produced In Month of May

Washington, June 2 (AP)—Over 1,400 heavy bombers were produced in the month of May, the War Relocation Authority today announced.

Over 1,400 heavy bombers were produced in the month of May, the War Relocation Authority today announced. This is a record for the month and shows the progress of the war effort.

Over 1,400 heavy bombers were produced in the month of May, the War Relocation Authority today announced. This is a record for the month and shows the progress of the war effort.

Over 1,400 heavy bombers were produced in the month of May, the War Relocation Authority today announced. This is a record for the month and shows the progress of the war effort.

Over 1,400 heavy bombers were produced in the month of May, the War Relocation Authority today announced. This is a record for the month and shows the progress of the war effort.

**WEATHER**  
FOR NORTH CAROLINA

Partly cloudy and continued warm tonight and Saturday with widely scattered thunder showers.