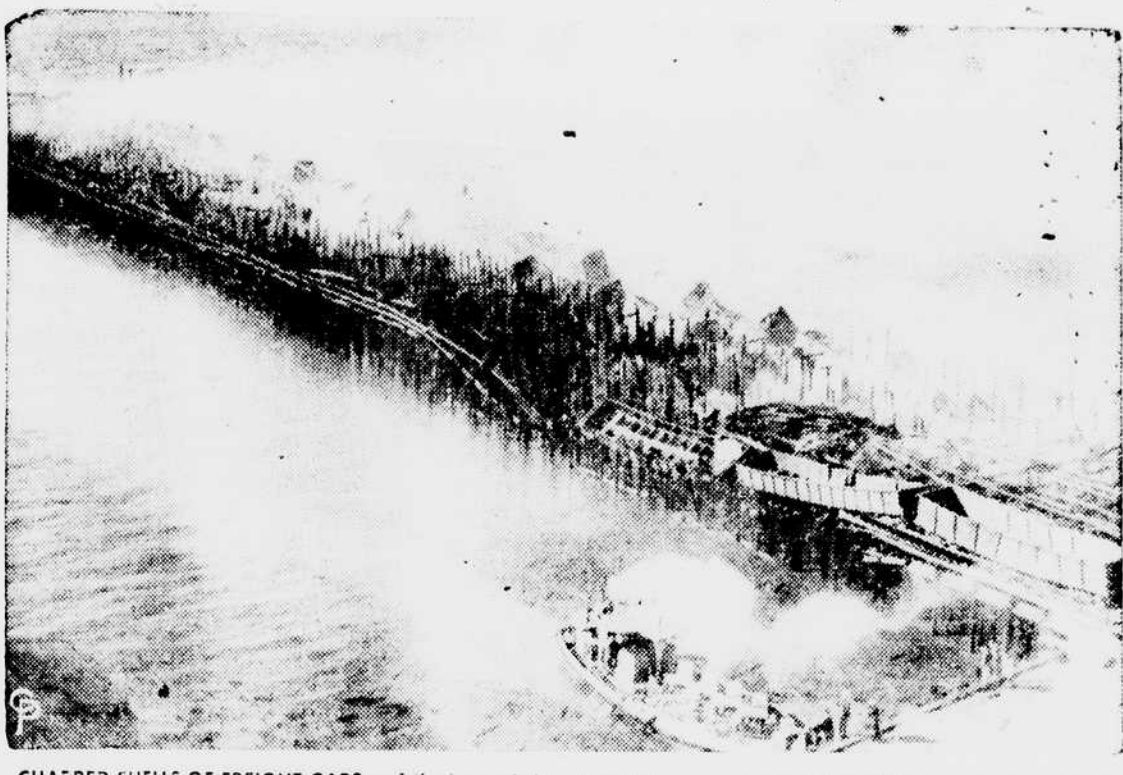


Nazis Dig Deeper Into Belgium
Churchill Hints Allied Accord Is Not 100 Percent



CHARRED SHELLS OF FREIGHT CARS and the burned tips of piling are about all that's left in this picture of the smoking ruin of Pier No. 8 at the Hampton, Va., port of embarkation.

Cooperation To Continue, Briton Says

Won't Comment On Query of Spheres Of Influence Set

London, Dec. 20—(AP)—Prime Minister Churchill told the House of Commons today that the three great powers were in "entire agreement about the general aims which bind our alliance."

SCENE OF NAZI COUNTERATTACK



HITTING THEIR HARDEST BLOW against American troops in Europe, Nazi forces have selected a relatively inactive front between Trier and the Monschau Forest for a furious drive against Gen. Hodges' 1st Army.

Infantry Is Following Tank Gains

First Army Plight Definitely Better, Front News States

Paris, Dec. 20—(AP)—United States infantry in Germany and checked the initial impetus of the powerful German counter offensive, which bit more than twenty miles deep into Belgium.

Stettinius Aides Are Sworn In

Bailey Kills Senate Postal Pay Measure

Washington, Dec. 20—(AP)—An objection by Senator Bailey killed until next year a House-passed bill authorizing postal service pay raises.

Further Changes In Department Are To Be Made Soon

Washington, Dec. 20—(AP)—Secretary Stettinius unveiled his modernized State Department set-up today as his hard-won team of new assistants was sworn in.

B-29s Bomb Tokyo Again; China Raided

Twenty-First Bomber Command, Japan, Dec. 20—(AP)—Three Superfortresses bombed Tokyo before dawn today.

Minister Is Accused As Nazi Spy Aid

Washington, Dec. 20—(AP)—The Justice Department today announced the indictment of a former minister, who the department said, had been recruited to establish himself in this country as a contact for German spies.

Yanks Capture Jap Town And Tighten Noose Around Foe

General MacArthur's Headquarters, Philippines, Dec. 20—(AP)—Following Yanks after seizing the Japanese headquarters town of Valencia, together with an air field, intact, drove forward north and south today in an effort to tighten a noose about the largest organized enemy force still fighting on west Leyte island.

Four Red Columns Move On German Anchor Town In Czechoslovakia Area

Moscow, Dec. 20—(AP)—Four Red army columns were converging in heavy attacks today on the city of Kassa, anchor of the entire German defense system in the mountains of eastern Czechoslovakia.

Weavers Idle In Cone Mill

Greensboro, Dec. 20—(AP)—Weaving room operators at the Proximity Manufacturing Company's large plant here continued idle today in their second day of manifest protest against introduction of a new work plan.

WEATHER FOR NORTH CAROLINA. Fair and warmer tonight; Thursday fair and mild, becoming partly cloudy and colder west portion in afternoon, with showers in mountains.

JAP LOSS HEAVILY FROM U. S. ATTACK ON HONG KONG. Chungking, Dec. 20—(AP)—A large Japanese tanker was sunk and an enemy destroyer and two large freighters were probably sunk in a bombing attack by P-51s yesterday at Hong Kong.

YOU CAN GET 'EM—IN GERMANY



HERE ARE SOME of those cigarettes you've been trying to get. They're at the front, in Germany. And they're being handed out by a pretty girl, Pic. Leroy Zeln (left), of Lebanon, Pa., is getting a hand-out.

Minister Is Accused As Nazi Spy Aid. The indictments returned at Newark, N. J., charged Carl Emil Ludwig Krepper, of Newark, with violating the sabotage, censorship and foreign agents statute.

Bigger Fight Coming, Nazi Radio States

London, Dec. 20—(AP)—The Berlin radio declared today that the German counter offensive in Belgium and Luxembourg already had paid dividends by compelling the Allies to halt attacks on other sectors.

Snavelly Released From His Work At Cornell at Once

Ithaca, N. Y., Dec. 20—(AP)—Cornell University's board of physical education and athletics granted Carl Snavelly, coach of the big red football team since 1936 a release from his contract, due to expire next spring.

BUY WAR BONDS 4 DAYS TILL CHRISTMAS