

Advertising Brings Success.
 The ways to advertise in the GOLD LEAF are shown by its well illustrated advertising columns.

SENSIBLE BUSINESS MEN
 Do not continue to spend good money where no profitable returns are seen.

That is Proof that it Pays Them

GOLD LEAF

As an Advertising Medium
 The GOLD LEAF stands at the head of newspapers in this section of the famous

BRIGHT TOBACCO DISTRICT
 The most wide-awake and successful business men use its columns with the highest

Satisfaction and Profit to Themselves

THAD R. JANNING, Publisher. | "CAROLINA, CAROLINA, HEAVEN'S BLESSINGS ATTEND HER." | HENDERSON, N. C., THURSDAY, MAY 9, 1901. | NO. 22. | SUBSCRIPTION \$1.00 Cash.



GREAT GUNS AT PAN-AMERICAN

Uncle Sam Will Show Mammoth Coast Defenders at the Buffalo Exposition.

It has sometimes been said by unthinking people that the sea-coast cities of the United States are not well defended. A flood of new light will be let into such gloomy minds by the Ordnance exhibit at the War Department at the Pan-American Exposition. When the Exposition opens for its six months' season at Buffalo on May 1 of this year, the early visitor will find the largest and most powerful guardians of our sea-coasts ever exhibited by the United States Government. Even the smaller of the two great new guns in the Government exhibit at the Exposition will be larger than any ever displayed by our Uncle Sam.

Captain Peter C. Harris, who represents the War Department, in charge of the entire war exhibit, has been engaged for six weeks past in the great work of collecting the new display of the land ever made in this country. It was an arduous question perhaps that I asked when I inquired if his exhibits would be ready on May 1, as though there were any other alternative for a soldier. The Captain smiled reproachfully at me.

But of the guns—great guns, indeed, big almost as a locomotive boiler, thirty odd feet long, with a more savage muzzle than ever caught destruction upon any hostile bow, built with the security of a watch-dog, delicate in adjustment that a little finger may traverse the gun, thus moving a weight of nearly half a million pounds, yet a muzzle to point a volcano blast and to create an earthquake at the will of man.

The big gun of which I speak is a United States Army twelve-inch breech-loading rifle, model of 1865, mounted upon a disappearing carriage. Its weight, stripped of everything, even the breech block, is 415,000 pounds. Its total length is 235 feet. The maximum diameter at the breech is 45 inches. It throws an armor piercing shot weighing 1,000 pounds, the length of which is three and one-half feet. It also throws a projectile in armor piercing shell weighing 1,000 pounds, four feet long, carrying a bursting charge of 343 pounds of gun cotton. The charge of powder is 240 pounds of smokeless or 430 pounds of brown powder. The muzzle velocity of the projectile under the above conditions is 2,200 feet per second, with a maximum pressure per square inch of 37,000 pounds. The muzzle energy is 36,671 foot tons. The power of penetration in steel at the muzzle is 23.0 inches, at 1,000 yards 28.5 inches, at 2,500 yards 25.5 inches and at 3,500 yards 23.5 inches. The total weight of the gun and carriage is 477,250 pounds. The carriage is twenty-five feet in diameter at the base, and the gun when in firing position is seventeen feet above the base of the carriage. When the shot is fired, the recoil causes the mechanism to lower the gun seven and one-half feet, behind the parapet. The gun has an accuracy of aim for about eight miles, and the extreme range is about double that distance.

As I have said, guns of this type have never before been exhibited by the United States Government, and

GOVERNMENT CURIOS

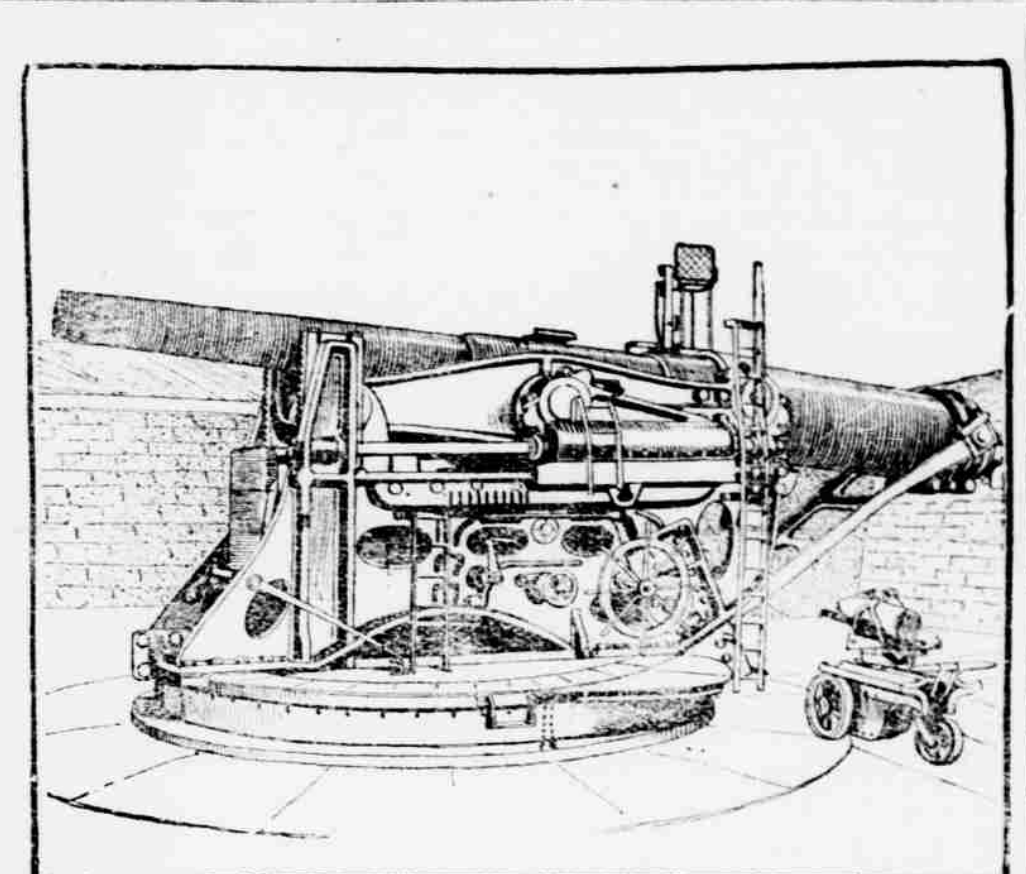
SOME INTERESTING DEPARTMENTS AT THE PAN-AMERICAN EXPOSITION.

Rare Collections From the Smithsonian Institution, Living Exhibit of Indians, an Agricultural Museum and Models of Warships.

As an appropriation of half a million dollars was made by the Government for the buildings to contain the Government exhibits, as well as for the exhibits themselves, the display at the Pan-American Exposition will be of no ordinary standard.

The collection from the Smithsonian Institution will be very large and of great interest, as it will demonstrate the scientific progress of the country and the results of its recent explorations, accompanied by portraits and models of various kinds. The groups under the Department of Anthropology in the Museum will be of particular value both from scientific and artistic points of view. Some already completed are groups of the Patagonians, the Eskimos and the Sioux, done by skilled artists and scientists. The sculptor El. Hart has had several of them in hand, and they present the most interesting and realistic exhibition of the various peoples that portray. The Natural History exhibit, also under the National Museum, will be excellent, while all objects illustrative of the natural resources of the country and their utilization will be covered by other departments or exhibitions.

The Living exhibit of the Six Nations, now in preparation by the Bureau of Ethnology, will be especially unique. Representatives of all the tribes now in the country will be brought to the Exposition. The historic oil council house of the Iroquois will be reproduced in bark by the Indians, who have gathered and prepared the material themselves. At the Exposition they will be the nucleus of their own government, with their own laws, customs, and dress, and their own language. The exhibit will be a museum of the past, and a model of the future. The exhibit will be a museum of the past, and a model of the future.



TWELVE-INCH BREECH-LOADING SEACOAST DEFENSE RIFLE ON DISAPPEARING CARRIAGE—IN POSITION FOR LOADING.

will be sent by the Department of Justice, together with photographs of other famous lawyers and judges. Documents showing important periods in the history of the United States, departmental publications and a number of old lawbooks will also be sent. One special feature of interest under this department will be the photos and views of state prisons and prisoners under the modes of employment and discipline of prisoners.

The Forestry Department will have a larger space at this Exposition than it has ever occupied at any previous exposition in this country—5,000 square feet. Models of all the various methods of mail transportation employed in all countries, as well as great large models of the various types of mail carriers, will be exhibited, and these will take up the main part of the exhibit. They will include models of domestic and international mail steamships, railway postal cars, mail wagons, pneumatic mail carriers, a model of the express mail, a figure of the "Pony Express" and large models of rural collection and distributing wagons. In themselves postoffices on wheels. In addition, there will be an array of stamps, envelopes and cards, domestic and foreign, with models of Cuban, Porto Rican and Filipino mail carriers as they were under Spanish rule; paintings, photographs and pictures illustrative of mail transportation in all countries, as well as great large models of the various types of mail carriers, will be exhibited, and these will take up the main part of the exhibit.

Nothing Tastes Good

And eating is simply perfunctory—done because it must be. This is the common complaint of the dyspeptic.

If eating sparingly would cure dyspepsia, few would suffer from it long. The only way to cure dyspepsia, which is difficult digestion, is to give vigor and tone to the stomach and the whole digestive system.

Hood's Sarsaparilla cured the niece of Frank Fay, 20 N. St., South Boston, Mass., who writes that she had been a great sufferer from dyspepsia for six years; had been with out appetite and had been troubled with sour stomach and headache. She had tried many other medicines in vain. Two bottles of Hood's Sarsaparilla made her well.

Hood's Sarsaparilla
 Promises to cure and keeps the promise. Don't wait till you are worse, but by a bottle today.

HAWKINS & CO.

TINNERS AND STEAM FITTERS.

We do everything in our line from Steam Fitting to Coffee Pot Mending on short notice at moderate prices.

ROOFING AND GUTTERING
 A specialty. Best quality galvanized iron and tin used in our work. Stove pipes, elbows and repairing of all kinds. Sole agents for

"Perfection" Roof and Iron Paint
 Your patronage solicited. Satisfaction as to work and price or no pay.

Montgomery St., Op. Cooper's Warehouse

"DAVE'S PLACE,"

(opposite S. A. Station.)
European Hotel, Restaurant and Lunch Counter.
 Meals served at all hours Day or Night
 Flushed Rooms. Comfortable Beds.
 Everything strictly first-class. An orderly, well kept place.

SALOON
 Equal to any in the State, stocked with nothing but the very best and purest liquors. Good music constantly playing. This being the only place on the coast where all kinds of liquors are served in strict accordance with the law.

FINE CIGARS AND TOBACCO.
POOL ROOMS IN CONNECTION.

HENRY T. POWELL,

ATTORNEY AT LAW.
 HENDERSON, N. C.

G. A. Coggeshall, M. D.,

Physician and Surgeon,
 HENDERSON, N. C.

H. H. BASS,

Physician and Surgeon,
 HENDERSON, N. C.

DR. F. S. HARRIS,

DENTIST,
 HENDERSON, N. C.

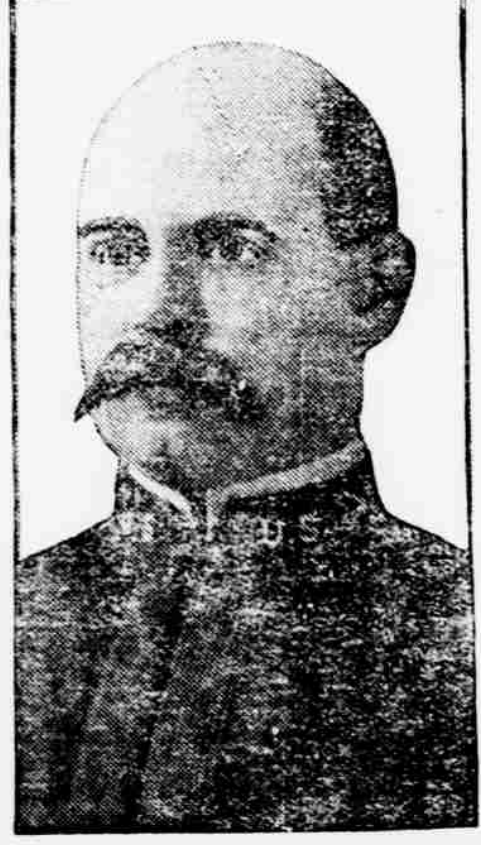
Henry Perry,

Insurance.

Dr. Humphreys'

Specifies cure by acting directly upon the disease, without exciting disorder in any other part of the system.

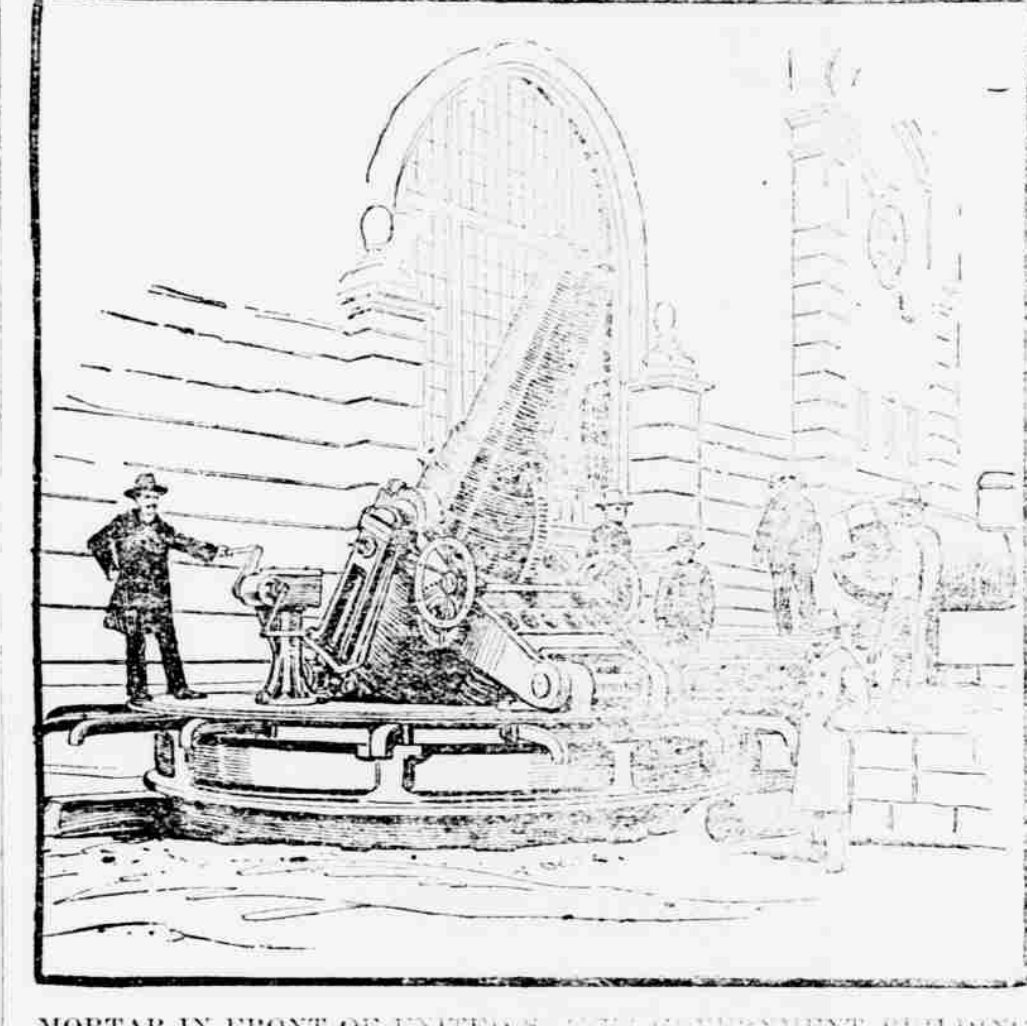
VERMIFUGES.
 1. Fever, Congestion, Inflammation, 25¢
 2. Worms, Worm Fever, Worm Cough, 25¢
 3. Cholera, Cholera Infantum, Cholera Morbus, 25¢
 4. Diarrhoea, Biliousness, Flatulency, 25¢
 5. Stomachic, Colic, Trichinosis, 25¢
 6. Nausea, Vomiting, Eructation, 25¢
 7. Headache, Sick Headache, Vertigo, 25¢
 8. Dyspepsia, Indigestion, Weak Stomach, 25¢
 9. Constipation, Painful Periods, 25¢
 10. Whites, Two Frolic Periods, 25¢
 11. Dropsy, Laryngitis, Hoarseness, 25¢
 12. Salt Rheum, Erysipelas, Eruptions, 25¢
 13. Rheumatism, Rheumatic Pains, 25¢
 14. Malaria, Chills, Fever and Ague, 25¢
 15. Catarrh, Influenza, Cold in the Head, 25¢
 16. Whooping Cough, 25¢
 17. Asthma, 25¢
 18. Nervous Debility, 1.00
 19. Urinary Weakness, Wetting Bed, 50¢
 20. Grip, Hay Fever, 25¢
 21. Dr. Humphreys' Manual of All Diseases at 50¢
 Sent free by Mail Postage Paid.
 Sold by all Druggists, or on receipt of price.
 Dr. J. C. Felt, 100 N. 3rd St., Philadelphia, Pa.



CAPTAIN PETER C. HARRIS, U. S. A.
 Superintendent of Ordnance Exhibit at Pan-American Exposition.

they are designed for use in secret fortifications, to which no visitors are admitted under any circumstances. The gun was manufactured at Watervliet Arsenal, near Troy, N. Y. The carriage was made at the Watervliet Arsenal, near Boston. The disappearing carriage was designed several years ago by Captain Buffington, now Brigadier General and Chief of Ordnance, and improved and adapted to modern steel rifles by Captain William Crozier, Ordnance Corps, United States Army. It is known as the Buffington Crozier carriage. The mounting of these mammoth pieces of ordnance has been in the immediate charge of Lieutenant R. H. C. Ketchum and a small detail of artillerymen.

To enable the observer readily to make an intelligent comparison of the mounts of our sea-coast guns Captain Harris has caused to be placed by the side of the great twelve-inch gun a ten-inch rifle on a barbette carriage. In a barbette carriage the rifle is at all times exposed above the parapet. The reader may remember the discussion on the subject between General Miles and



MORTAR IN FRONT OF UNITED STATES GOVERNMENT BUILDING, PAN-AMERICAN EXPOSITION.

shell carries a bursting charge of 22 1/2 pounds of gun cotton and weighs 750 pounds, having a length of four feet. The solid shot is three and one-half feet long. The powder charge is 140 pounds of smokeless powder, and the muzzle velocity of the projectile is 2,200 feet in a second. The maximum pressure per square inch is 37,000 pounds. The muzzle energy with the charge of smokeless powder is 21,086 foot tons. The gun has a penetrating power of twenty inches in steel at 2,500 yards.

To the right of the ten-inch gun a twelve-inch mortar has been mounted, and it is no small affair. Farther to the right is a five-inch rapid fire gun. All are mounted behind sections of a parapet, and the four pieces represent one of each type used in sea-coast fortifications.

To the left of the great twelve-inch disappearing gun will be exhibited the old sea-coast ordnance of the United States, arranged in a historical series. The twelve-inch gun itself representing the climax. Near the small building specially constructed for this purpose will be displayed the mountain, field and siege guns of the present day, together with types of old guns used in the different wars in which the United States have been engaged.

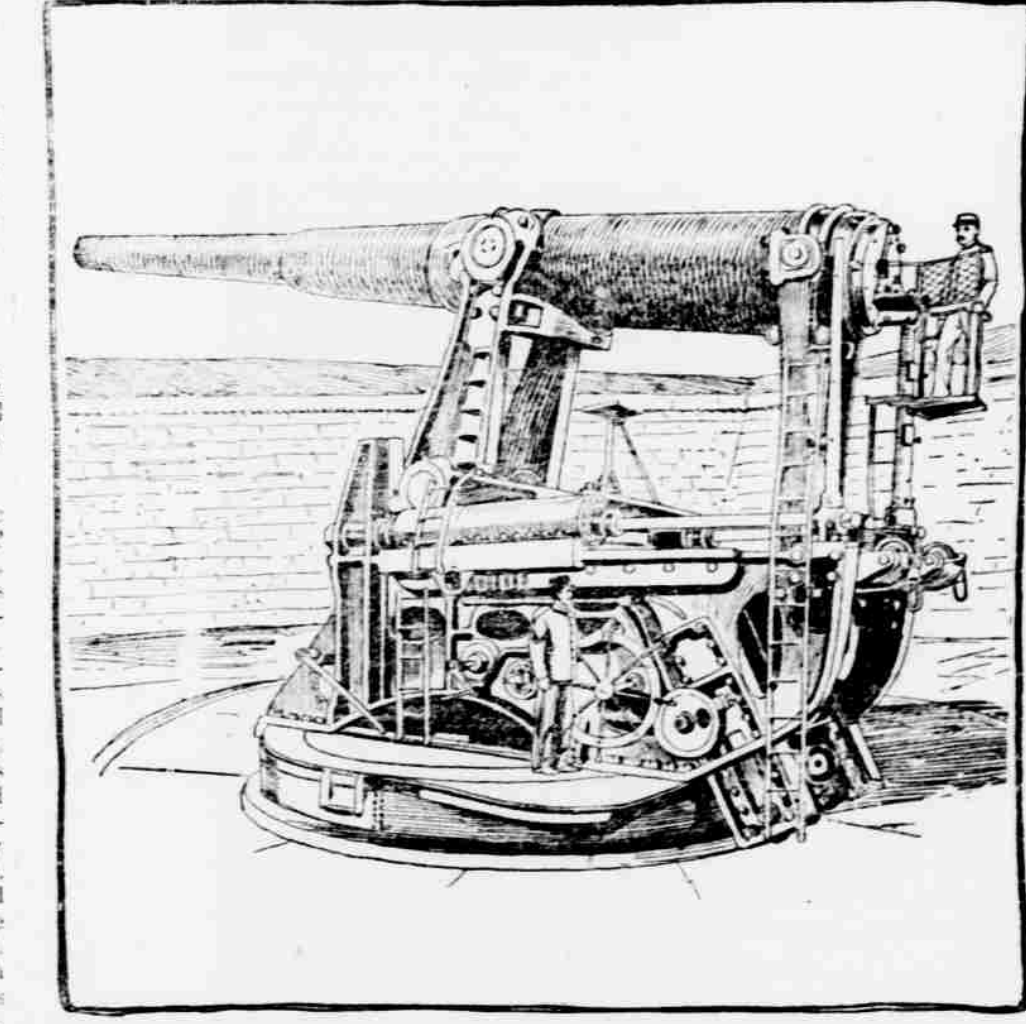
The Ordnance exhibit will show the historical development of ordnance in the United States, a gun representing every type adopted by the United States and showing the evolution of guns, mortars and howitzers. Among the howitzers will be one made in 1793. There will also be thirty or forty trophy guns, displayed according to period of capture. A novel feature will be a trophy fountain, representing a bursting shell, with water spouting from its crevices. This will be mounted on a pile of projectiles, surrounded by trophy guns.

The largest guns mounted in any of our sea-coast batteries during the war of 1812 were twenty-four pounders, the diameter of bore being less than six inches and the weight of guns 5,500 pounds. They were a little over ten feet long, and the powder charge was six and eight pounds of black powder. They were mounted upon wooden carriages. In 1829 the thirty-two pounder, with a caliber of 6 1/4 inches, using a charge of eight to ten pounds of black powder, was adopted, and in 1831 the forty-two pounder, with a caliber of seven inches and using ten to fourteen pounds of black powder, came into use. In 1841 the eight and ten inch Columbiads fired a shot weighing sixty-five pounds and used a charge of ten to fifteen pounds of black powder. The ten-inch shot weighed 120 pounds, and the powder charge was eighteen and twenty pounds.

In 1861 the first fifteen-inch Rodman gun was cast. These guns were smoothbores of cast iron. The process of manufacture was evolved by General Rodman, who, to prevent injury to the guns strains produced by cooling cast-

CURES RHEUMATISM OR CATARRH THROUGH THE BLOOD—COSTS NOTHING TO TRY.

Would you like to get rid of that chronic rheumatism, or other chronic ailment? Then take a bottle of Botanic Blood Balm, which has cured thousands of hopeless cases that had resisted doctors and patent medicine treatments. Botanic Blood Balm (B. B.) cures through the blood by destroying the poison which causes the awful aches in the bones, joints, shoulder blades and back, swollen glands, hawking, spitting, bad breath, impaired hearing, etc., thus making a perfect cure. Botanic Blood Balm thoroughly tested for 30 years. Composed of certain and chosen of the best herbs to take by food and young. Druggists, \$1. Trial treatment free by writing to Botanic Blood Co., Atlanta, Ga. Describe trouble and free medical advice given and cured. Don't give up hope but try B. B., which makes the blood pure and rich and builds up the "all run down" tired body. B. B. makes the blood rich, giving the skin the rich glow of perfect health.



TWELVE-INCH BREECH-LOADING SEACOAST DEFENSE RIFLE ON DISAPPEARING CARRIAGE—IN FIRING POSITION.

KIDNEY DISEASES

are the most fatal of all diseases.

FOLEY'S KIDNEY CURE is a Guaranteed Remedy

or money refunded. Contains remedies recognized by eminent physicians as the best for Kidney and Bladder troubles.

PRICE 50c. and \$1.00.

Sole sale by Melville Dorsey, druggist.

Foley's Honey and Tar heals lungs and stops the cough.

THE FORESTRY EXHIBIT.

Government Will Make a Splendid Display at Pan-American.

The United States Government Forestry exhibit at the Pan-American Exposition will for a division of the Department of Agriculture. It will consist mainly of a photographic display illustrating the relation of agriculture to forestry, supplemented by maps and sections of commercial timber trees from the Appalachian Mountain region.

The photographic display will embody sixty framed bromide prints enlarged from photographs, together with twenty colored and uncolored transparencies.

The bromide pictures range in size from sixteen by twenty-four to twenty-four by thirty inches, and the transparencies are from three by four to six by ten feet.

The subjects to be illustrated by bromides and transparencies comprise briefly the various methods of lumbering, their effects on forest production and on the adjacent agricultural lands. The special protective agencies of forest land and the relation of such denudation to the flow of water in streams and the supply of water for irrigation will be fully shown. The principal types of trees and forests will be illustrated by the size and number production of forests occupying agricultural and nonagricultural lands. The value of preserving certain types of protective forests on watersheds for the conservation of water important to adjacent large areas of agricultural lands will also be illustrated. A special feature of the photographic display will be the illustration of individual trees of the mammoth Bigtree, the Giant Red Fir, the White Fir and the Sugar Pine of the California Sierra forests by colored transparencies six by ten feet. It is interesting to state in this connection that these transparencies are the largest ever made. Typical agricultural valley lands in the East and West will be illustrated on the same scale, showing the special protective agencies of natural adjacent mountain forests as planted shelter belts of forest trees. The region and the subject from which these illustrations were taken are representative of the principal agricultural and forest sections of the United States.

Fourteen colored maps of the United States will show the distribution of the principal forest types and species, the distribution of rainfall in relation to that of forest areas and in connection the location of State Experiment Stations.

Nineteen large slabs, four feet high and six inches thick, with bark attached and one surface polished, show the size, quality and character of the commercial timber trees of the Appalachian forest region.

The Government Forestry exhibit will be under the immediate supervision of Mr. Clifford Pineholt, the Chief of the Division. He is a graduate of Yale and has traveled extensively and is prepared for Buffalo an exhibit that has never been shown in this country before. CHARLES EDWARD LLOYD.

Reduced Rates via Southern Railway.

Meeting Board Medical Examiners of State and North Carolina Medical Society, Durham, N. C., May 15-21, 1901. On account of above the Southern Railway will sell round trip tickets to Durham. Fare from Henderson was \$2.25. Tickets to be sold May 15 and 16th, 20th and 21st. Final limit May 25th, 1901.

Meeting North Carolina State Bar Association, Wrightsville, N. C., June 26-29, 1901. On account of above the Southern Railway will sell round trip tickets to Wrightsville, N. C. Fare from Henderson will be \$8.80. Tickets to be sold June 24, 25 and 26. Final limit June 30, 1901.

Triennial Conclave Knights Templar, Louisville, Ky., August 27th to 30th, 1901. On account of above the Southern Railway will sell round trip tickets to Louisville, Ky. For individuals the rate will be one first-class fare for round trip. For brass bands in uniform, ten or more on one ticket, plus one cent per mile in each direction, plus arbitrary per capita. Tickets to be sold August 24th to 28th, inclusive, final limit September 3rd, 1901.

CHICKENPOX ENGLISH PENNYROYAL PILLS

Every Mother can have Peace, for the special protective agencies of natural adjacent mountain forests as planted shelter belts of forest trees. The region and the subject from which these illustrations were taken are representative of the principal agricultural and forest sections of the United States.

PARKER'S HAIR BALM

Every Woman should know that her hair is the most beautiful part of her face. It is the crown of her glory. It is the key to her success. It is the key to her happiness. It is the key to her health. It is the key to her life.

Executrix's Notice.

HAVING QUALIFIED BEFORE THE Clerk of the Superior Court of Vance County, as executrix with will annexed of the estate of William H. Cheek, deceased, this is to notify all persons holding claims against the said estate to present them to me, duly authenticated, on or before the 17th day of April, 1902, or this notice will be pleaded in bar of the recovery of the same. Persons indebted to the said estate must make immediate settlement. This 17th day of April, 1901.

ALICE M. CHEEK, Executrix of the estate of Wm. H. Cheek, deceased.