

You Can Always Tell a Cheap Piano By The Method Used in Selling It.

Pianos sold by agents begging to place them in your home on trial or to save storage or forcing them in your home without your consent.

"Coupon Schemes," "Guessing Schemes," "Club Schemes," "Special Sale Schemes," "Special Introductory Sale Schemes," etc., are fake methods pure and simple, for unloading pianos on people who don't realize the difference between a fine piano and a cheap one, and don't know that high grade pianos are not sold through fake schemes. You had better call on the old reliable firm of Chas. M. Stieff before buying.

Chas. M. Stieff
Southern Wareroom
219 South Tryon St.,
CHARLOTTE, N. C.



Drink **Hires**
The Genuine Rootbeer
Absolutely pure. Refreshes you when thirsty, invigorates you when tired, delights you at any time. Order a case from the exclusive bottlers
Pepsi-Cola Bottling Co.

WE OFFER

at a reduced price, two number five, one number ten and one number twelve De Laval Separators. These have been slightly used but are practically as good as new. If interested, call and see us.

We buy all kinds of country produce and pay the highest market prices.

Hickory Seed Co.
HICKORY, N. C.

WANTED

To buy five acres wooded land not over three miles from depot. Would accept as part payment in exchange for desirable city property; balance on easy terms.

Call at the Democrat office or phone 37.

FOR SALE

At a Bargain

Two desirable building lots, in good community, near graded school. Size 167 feet front by 200 feet back. Will sell outright or exchange for out-of-town land. Call at the Democrat office or 'phone 37.

KILL THE COUGH AND CURE THE LUNGS WITH DR. KING'S NEW DISCOVERY FOR COUGHS PRICE 50¢ & \$1.00 TRIAL BOTTLE FREE AND ALL THROAT AND LUNG TROUBLES GUARANTEED SATISFACTORY OR MONEY REFUNDED.

Midway at the Panama-Pacific Exposition Will Be the Most Striking and Original of All

By HAMILTON M. WRIGHT.

FOLLOWING the battleship parade into San Francisco harbor—the opening event of the Panama-Pacific International exposition in 1915—there will be a program of events of world interest and importance in a succession of two months apart, interspersed with lesser events: Yacht and motorboat races of an international character for great trophies and cash prizes; aviation meets with the famous bird men of the world; Olympic games, in which the athletes of the world will take part; intercollegiate contests; automobile races, in which the holders of the world's records will participate in the automobiles of every nation; military maneuvers, in which the crack cavalry and infantry of this and other nations will participate upon an extended scale. The location of the exposition gives widest scope for the greatest international sports program in history. The auto races will pass into Golden Gate park before the huge concrete Coliseum seating 75,000 people. The military maneuvers and Olympic games will also be held in the stadium. On San Francisco bay motorboats will vie for the world's records before the Harbor View site of the exposition. Noted yachtsmen will sail from Europe across the Atlantic to New York and then through the Panama canal to San Francisco. Personal invitations will be extended to the foreign rulers to attend the exposition if possible or to be represented by their diplomatic representatives in the royal yachts.

The concession and amusement features at the exposition will be among the most striking and original ever displayed. The "Midway" will be located at the Harbor View site of the exposition, the location of the night life of the exposition, and every possible feature that can be conceived as appropriate to an exposition will be shown. The Chinese residents of San Francisco have under way a project for a great Chinese concession which will be surrounded by a replica of the great wall of China, inclosing within its environs a series of Chinese communities and embracing every possible feature of interest in Chinese life from the manufacture of silks and ivory and woodcarving to sampans and junks floating on miniature waterways and

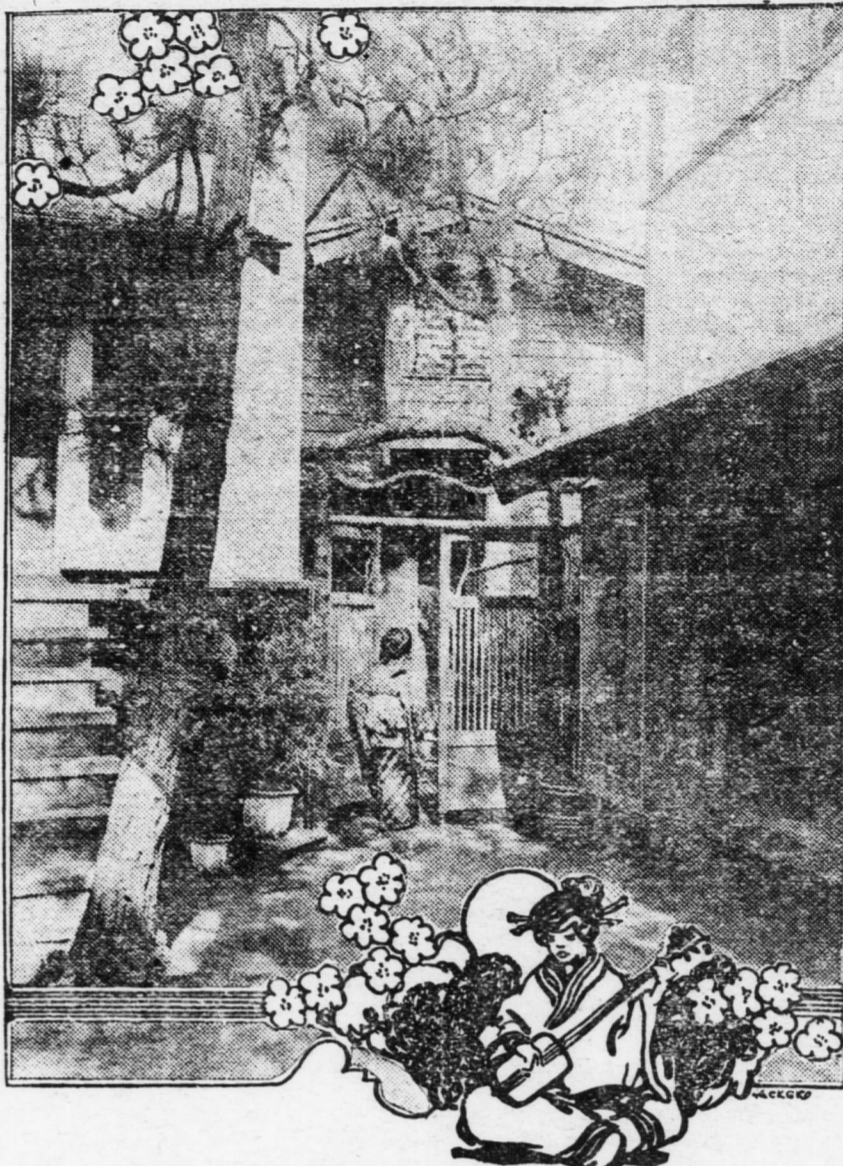
portraying the life of the river dwellers around Canton. The concession will cost \$1,000,000, and influential Chinese with American attorneys and engineers will shortly leave for the orient. From Nevada concessionaires will establish a riproaring mining camp, picturing the days of '49 and the bonanza era of the Comstock lode. Bret Harte's heroes, old Wells Fargo stage drivers, gamblers and rambling, bad men, prospectors, shootings and holdups will lead a realistic touch to the camp.

But the chief charm of Harbor View for most people will lie in its setting on San Francisco bay. As the crowd files the site extends along the water front for about a mile, but following the irregular contours of the shore the distance is more than that. Along the entire water's edge at Harbor View will be built an esplanade, or land, along which visitors may walk, and an existing lagoon will be made the basis of a superb yacht harbor. Classic columns will rise from the water's edge, and near by will be the great exposition structures, the Palace of Liberal Arts, the educational building, the manufactures building and other edifices that house the more serious phases of the exposition, as distinguished from the amusement features. Harbor View lies as an amphitheater, with its sides the wooded slopes of the Presidio and the tenanted hills of San Francisco. It is near the most populous part of the city and is not more than twenty minutes' walk from Nob Hill, where lived the multimillionaires of California's early mining days. Looking down from the hills one can see all over the Harbor View site, while from Harbor View

itself one may look out over the bay through the Golden Gate to the Pacific ocean. At night Harbor View will be brilliantly illuminated with incandescents, Finzen lights and waterfall illuminations. A chain of lights will stretch across the Golden Gate, the international fleet of battleships in the harbor will be illuminated, a huge

commemorative structure towering 1,200 feet above the Golden Gate will be surmounted by a searchlight, and its outlines will be limned with incandescents. In fact, the contours of the exposition site will be visible for miles away.

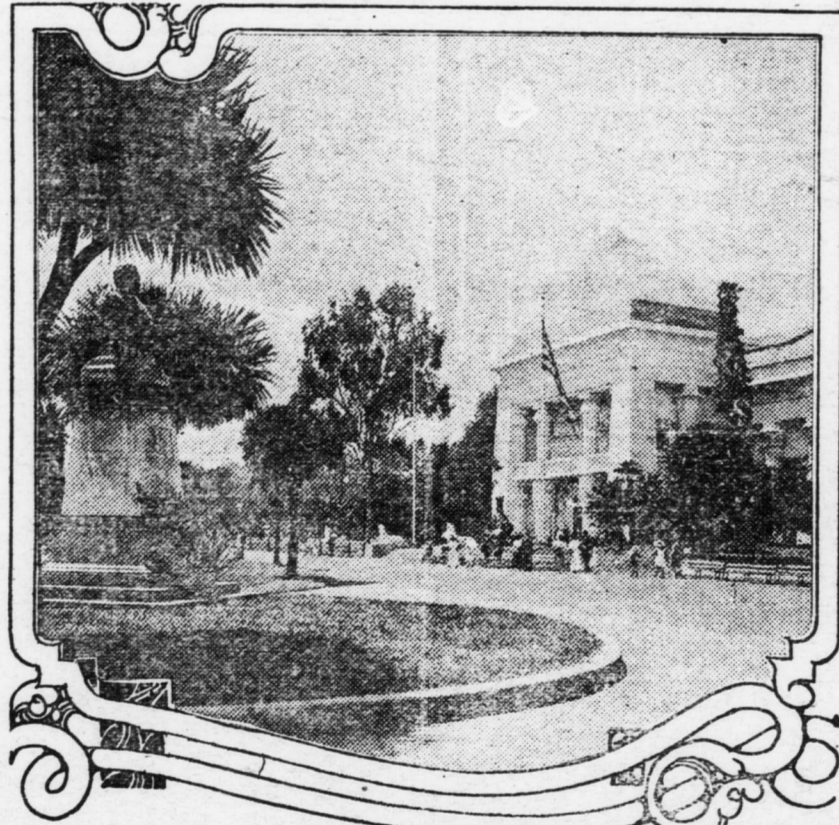
The west will be on exhibition to those who view the Panama-Pacific In



JAPANESE TEA GARDEN IN GOLDEN GATE PARK, SAN FRANCISCO
Japan will make the greatest exhibit ever shown from the Flowery Kingdom at the Panama-Pacific International exposition at San Francisco in 1915.



A GLIMPSE OF CHINATOWN, SAN FRANCISCO.
China will display a wonderful exhibit at the Panama-Pacific International exposition at San Francisco in 1915.



THE MUSEUM IN GOLDEN GATE PARK, SAN FRANCISCO.
Amid semitropical settings will be located the permanent features of the Panama-Pacific International exposition to be held in San Francisco in 1915.

More About Woman.
Quoth the Cynic: "Women are saints in church, angels in the street, devils in the house, and magpies in the drawing room."

Bite That Broke Bulldog's Tooth.
At Garrettsford a bulldog pounced at the leg of James Martin, of this place. Being an artificial limb, the joint under the knee, largely of steel, closed on the dog's jaw, held him fast for a minute and broke off one of his teeth. —Philadelphia Record.

Had an Object.
"An Irishman was sleeping with a companion. In the middle of the night he was discovered out on the floor. Asked by his bedfellow what he was doing there, he calmly replied: 'I got out to tuck myself in.'"—Bulls, Ancient and Modern, by J. C. Percy.

Live Each Day.
Foresight is very wise, but foresorrow is very foolish; and castles are, at any rate, better than dungeons in the air.—Sir John Lubbock.

international exposition in 1915. Under the stimulus of cheap railroad rates and convenient traffic arrangements thousands will have an opportunity that they could have in no other way to know their own country better. Side excursions to the Yosemite, the Grand Canyon of the Colorado, the Yellowstone National park, the Redwoods of the north coast of California, the big trees of the Sierras on the approach to the Yosemite, the side trip to Alaska by the inland channel, will be parts of the delightful and educative features of a visit to the exposition.

Routing over any of the eight trans continental roads that terminate upon the Pacific coast will enable the traveler to come by one route and return by another. Visits to the slopes of Puget sound and the great fast growing cities there, the Great Salt lake, the Santa Clara valley, with its prairies of flowers; the orange orchards stretching from the northern portion of the state to Los Angeles; Redlands, Riverside and San Diego and the journey through the Panama canal, either coming or returning, perhaps most wonderful of all, will be among the unusual opportunities of 1915, to see much of the world at a moderate expenditure and under conditions never before obtained. When the Panama canal is in operation ships will negotiate the journey between Atlantic and Pacific coast ports in less than three weeks' time.

Each in His Own Sphere.
The man who sweeps the streets is doing as much service to the state as the man who fills the pulpit or sits in the senator's chair.

Canny Mr. Man.
A man is not necessarily insane because he wears an outrageous tie. It might be a present from a rich aunt—in which case he is very much the reverse of insane.

Bank Your Money

and pay your bills with checks on our bank. Then you will have a correct account of what you spend and what you spend it for. You won't spend so much money FOOLISHLY then.

It is not so much what a man makes as what he saves that counts. Our bank is the place to save your money. We pay 4 per cent. on time deposits.

Soundness, Reliability, Honesty

are the pillars upon which our institution is built. Do your banking with us

Hickory Banking & Trust Co.

25% REDUCTION

IN
Clothing, Shoes and Dress Goods
At **Setzer & Russell's.**

Men's Clothing.

| | |
|--------------------------|---------|
| \$17.50 Suits at | \$11.95 |
| 15.00 Suits at | 9.85 |
| 12.00 Suits at | 8.45 |
| 10.00 Suits at | 6.95 |
| 8.00 and \$7.50 Suits at | 5.85 |
| 5.00 Suits at | 3.75 |

| | |
|-----------------------------------|--------|
| \$5.00 Crossett Shoes and Oxfords | \$3.25 |
| 4.00 Crossett Shoes and Oxfords | 2.95 |
| 3.50 Crossett Shoes and Oxfords | 2.65 |
| 3.00 Crossett Shoes and Oxfords | 2.45 |

Ladies' Wool Dress Goods.

| | |
|---------------------------------------|--------|
| \$1.00 Goods for | 80c |
| 75c " " | 55c |
| 60c " " | 40c |
| 50c " " | 35c |
| \$3.50 Ladies' Fine Shoes and Oxfords | \$2.45 |
| 3.25 Ladies' Fine Shoes and Oxfords | 2.15 |
| 3.00 Ladies' Fine Shoes and Oxfords | 1.75 |
| 2.50 Ladies' Fine Shoes and Oxfords | 1.60 |
| 2.25 Ladies' Fine Shoes and Oxfords | 1.45 |
| \$1.00 Mesline Silks at | 80c |
| 25c Susine Silks at | 20c |
| 12 1-2c Lawns at | 8c |
| 12 1-2c Gingham at | 10c |
| 10c Gingham at | 8c |

The above are only a few of the great bargains which will be found at our store during "TRADE WEEK" from Saturday, Aug. 10 to Saturday Aug. 17.

Make our Store Headquarters while You are in Town.

SETZER & RUSSELL.