

Delicious Refreshing **Coca-Cola** Exhilarating Invigorating

"AN OASIS IN THE DESERT OF THIRST."

"THE DRINK THAT TAKES THE 'WRY' OUT OF DRY."

"TRANSFORMS BEADS OF PERSPIRATION INTO BEADS OF DELIGHT."

"THE BOTTLE THAT THROTTLES YOUR GROUCH."

"UP TO THE NECK IN COLDSOME, WHOLESOME TASTINESS."

The Monroe Coca-Cola Bottling Co.  
Phone 340. F. W. PINKSTON, Proprietor.

### And Don't Forget the Brakes



That is very important, especially if you are "a speed king" and want to be sure and stop your car on the instant—when you must. Let us look over your brakes at regular intervals and make sure they can always be depended upon. Your clutch, steering gear and much used parts also need careful looking after.

HENDERSON GARAGE & MACHINE CO.  
Monroe, N. C.  
FORD CARS — FORD SERVICE — GENUINE FORD PARTS.

## The Successful Man

rarely has had unusual opportunities, but he has been prepared to meet what comes and get the most out of it.

### TO BE PREPARED

requires a reserve fund in the Bank working for you.

### WE WELCOME

the small or large account and aid our depositors in every practical way to succeed in their financial efforts.

## The First National Bank of Monroe

Resources Over Half Million.

J. H. Lee, President. Dr. J. E. Ashcraft, Vice-Pres.

J. W. Laney, Cashier

C. W. Baucom, Assistant Cashier.

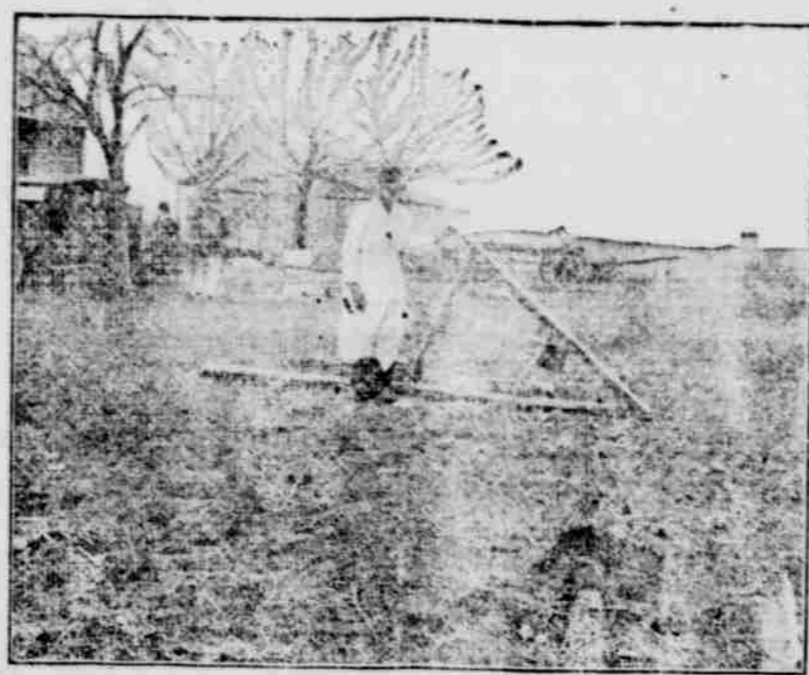
## Victor Service

JUNE VICTOR RECORDS ON SALE

Come in and Let us Play Them for You.

—The—  
W. J. RUDGE CO.

## BEST RESULTS OBTAINED IN TERRACING BY EMPLOYING PLOW AND V-SHAPED DRAG



View of Home-made Wooden V Drag Used for Throwing Up Terraces.

(Prepared by the United States Department of Agriculture.)

In terracing a field, the upper terrace should always be built first. If a lower terrace is built first and there is not time to build the upper before a rain comes, then the lower will be badly washed and broken by the large volume of water drained from all the land above. In building the terrace a back-furrow strip about four furrows wide is first thrown up. The steel terracer or V drag drawn by four horses is then used to move the dirt toward the center of the strip and as high as possible. The plowing is then continued and the best results are obtained where each round with the plow is followed with the V drag. The short wing of the V drag is sometimes hinged so that the distance the dirt is moved can be varied as the terrace grows wider. For the best results the weight of two men is required on the drag. They can shift their weight so as to raise or lower the end of the short wing as desired. The process of plowing and dragging is continued until the terrace is 15 to 20 feet wide. If the terrace is not high enough after it has settled, as found by testing the height in a number of places with a level, the plowing and dragging should be repeated.

### Use of Plow Alone.

Terraces are sometimes built with a plow alone. Several plowings are required to throw up the terrace to the desired height. A large bench plow with an extra large wing attached to the moldboard is used very successful-



The First Step in Building a Terrace is to Back Furrow a Strip About Four Furrows Wide.

ly for throwing up high terrace embankments. The disk plow and the ordinary road grader are very effective implements for use in building terraces. Graded terraces on steep slopes are often built with a plow and slip scraper. A strip is backfurrowed with the plow and the loose earth on the upper half of the strip is scraped up and dumped on the lower half. By this method the terrace is built up mostly from soil moved down from the upper side.

In order to finish up terraces properly, some work with the slip scraper is generally required. The top of the terrace should be tested with the level and so that it conforms to the proper grade. Any low places detected should be filled with a shovel or scraper. All large embankments across draws and gullies should be built with the slip scraper, and it is necessary to build such embankments considerably higher than the rest of the terrace to allow for settling of the loose earth. Most breaks in terrace systems occur at crossings of gullies or draws, and it is therefore very important that a high, broad, substantial embankment be built across these places. In order to remove any water that collects above the terrace embankment across draws or gullies, a pole drain can be laid under the terrace down the middle of the gully. Such a drain is made by simply laying three poles together in the shape of a triangle. It will serve the purpose until the depression above the terrace is filled with silt and a drain is no longer required. This drain is particularly adapted for use with systems of graded terraces.

### Remove All Obstructions.

Obstructions, such as rocks, stumps, and stones, that lie along the line of the terrace should be removed, since their presence might permit seepage and result in the failure of the terrace. In some parts of Texas the fields contain numerous large earth mounds, generally known as gas mounds. These mounds cause considerable difficulty in terracing fields.

Where they lie along the lines of graded terraces, it becomes necessary to provide a passage-way through them by means of the plow and scraper.

Where terraces are continued from one field to another across a fence row, it is necessary to build that portion of the terrace near the fence by hand labor, using the spade and shovel. It is very important that this portion of the terrace and channel be built the same size as the rest of the terrace, and considerable attention should be given later to see that the waterway is always kept open, so that the free flow of the water shall in no way be obstructed.

Narrow and bench terraces are built in the same manner as the broad-bench terraces, but not so wide. The bench terrace is gradually developed by always plowing the soil down the hill with a reversible plow.

The old maxim, "What is worth doing at all is worth doing well," is especially applicable to terracing work. If one has not time to terrace all of a field properly, it is far better to terrace the upper part well than to attempt to terrace the whole field and to a poor job.

## SELECTION OF HENS FOR WINTER LAYERS

Fowls Should Be Banded or Punched in Web of Foot.

Poultryman Is Enabled to Cull Out Older Stock Whenever Desirable, and Keep Pullets for Further Production of Eggs.

(Prepared by the United States Department of Agriculture.)

Before the pullets are mixed with the older fowls be sure that the hens are banded or that the web of the foot is punched in some way so that you can distinguish between the pullets and the hens. In this way the older stock may be culled out whenever it appears desirable and the young hens kept for further laying. Do not keep hens of the heavier breeds for egg production over two years, but some of the best hens may be kept for breeders until three or four years old. Leghorns can be kept profitably for egg production for three years. The pullets that mature early in the fall and that molt late as hens are usually the best layers and should be saved for breeding stock. Cull the chickens which are brought into the laying house carefully, and fatten and market all chickens which are small, poorly developed, or in poor condition. These small, poorly developed chickens are apt to catch cold if put in with the other poultry and develop diseases which quickly spread through the flock.

In order to get the greatest egg production in the early fall and winter, it is essential to have well-matured pullets which were hatched in March or April, or even earlier in the Southern States. By early hatching and by supplying good conditions for egg production more eggs will be produced in the fall and winter, while a larger proportion of hens will go broody early in the spring, thus completing the necessary circle for early egg production.

### TRY SOME FLAX THIS YEAR

Good Guaranty Against Spring Loss in Sections Where Spring Wheat is Principal Crop.

(Prepared by the United States Department of Agriculture.)

Flax is a good guaranty against crop loss in the sections where spring wheat is grown. It is not attacked by rust and can be sown after it is too late to sow wheat with safety; consequently its production need not be confined to newly broken land or land that is too wet for wheat. In purchasing flaxseed farmers should not pay exorbitant prices for highly advertised varieties. The seed offered for sale by most seed dealers is merely seed grown by farmers that has been purchased and cleaned. There are two advantages, however, in purchasing seed from reliable seed houses—namely, such firms can arrange to get their seed from districts where especially good seed was grown the year before and they are also able to clean it better than the individual farmer or small seed dealer.

## A Word to the Wheat Farmer

Harvest time is now here and we want to urge the wheat farmer to be sure that he is harvesting his wheat. Don't harvest your wheat until it is thoroughly matured. Immature wheat makes a tough, sticky biscuit.

Shocking should be done carefully. Frequently great damage is done by wind and rain on account of the improper method of shocking, whereas if the shocks had been well built and properly capped little or no damage would have occurred.

When thoroughly cured house your wheat if possible. Thrash your wheat only when it is dry and do not allow your threshman to break it.

IF YOUR GRAIN SHOULD GET WET do not allow it to remain so, but immediately bring it to us and we will dry it for you at a minimum cost.

## New Machinery Installed

We have installed some new machinery and have thoroughly gone over our plant in preparation for the new crop. Our drying machine is a dandy, so is our new Mixing Machine for making Self-Rising Flour. We invite you to come in and see them. Tell your friends about us, or better still, bring them along with you.

After the movement of the new crop our mill will be open day and night. There will be no war grade flour this year, so bring your wheat along and get good white flour on our guarantee that it will give you satisfaction.

## Henderson Roller Mills Company

MONROE, NORTH CAROLINA.



## FURNITURE — FURNITURE — FURNITURE

Not the cheapest, but as good as the best. We do not desire to be known as the cheapest store on earth. Our goods are what we claim them to be—worth the price—and our prices are extremely moderate when quality is considered. You can get goods cheaper than we care to sell, for we do not care to handle the ordinary cheap glue pot variety of furniture; but no reliable store in any other city can offer you better values than we do, and our service is good—ask your next door neighbor about it, and about us. Come and see us. Remember it is our business to please you.

## T. P. Dillon & Sons

### Union Plunges in Lumberton Robesonian.

The Charlotte Observer comments approvingly on the determination of the citizenship of Union to issue \$500,000 in bonds for good roads in that county. At the last session of that Legislature the issuance of this amount of bonds was authorized with the provision that if one-fourth of the voters should so petition the bonds could not be issued without an election to authorize them. The bill also provided that the county commissioners should give notice for 30 days previous to the issuance of the bonds so that every citizen would have ample opportunity to take action. The 30 days expired a week ago yesterday without a single petition against the issuance of the bonds making its appearance, so the bonds will be issued without an election. The \$500,000 bonds will be issued as needed and the The Observer understands that portion of the money will be used in building Union county's link in the Wilmington-Charlotte-Asheville highway. "Announcement of this big bond issue," The Observer concludes, "looks as if the

Union county folk do not intend to be one minute behind any other county on the proposed route of the W.-C.-A. highway) in getting their road down, and they deserve the highest praise and commendation for their enterprise in this matter."

### Piles Cured in 6 to 14 Days

Druggists—Save money if PAIN OINTMENT falls in case of hemorrhoids, piles, itching or protruding piles, "swampy" rectum, itching, etc., and you can get relief after the first application. Price 60c.

Do not look for wrong evil—You will find them if you do. As your measure for your neighbor, He will measure back to you. —Alice Carey.

### Grove's Tasteless Chill Tonic

restores vitality and energy by purifying and enriching the blood. You can soon feel its strength-involving effect. Price 60c.

## LESS MEAT IF BACK AND KIDNEYS HURT

Take a glass of Salts to flush Kidneys if Bladder bothers you—Drink lots of water

Eating meat regularly eventually produces kidney trouble in some form or other, says a well-known authority, because the uric acid in meat excites the kidneys, they become overworked, get sluggish, clog up and cause all sorts of distress, particularly backache and misery in the kidney region; rheumatic twinges, severe headaches, acid stomach, constipation, torpid liver, sleeplessness, bladder and urinary irritation.

The moment your back hurts or kidneys annoy, acting right, on it bladder bothers you, get about four ounces of Groves Salts from any good pharmacy; take a tablespoonful in a glass of water before breakfast for a few days and your kidneys will then act fine. This famous salt is made from the seed of grapes and lemon juice, combined with litmus, and has been used for generations to flush clogged kidneys and stimulate them to normal activity; also to neutralize the acids in the urine so it no longer irritates, thus ending bladder disorders.

Just Salts cannot injure anyone; makes a delightful toilet requisite for those who desire dark hair and a youthful appearance. It is not intended for the cure, mitigation or prevention of disease.

## SAGE AND SULPHUR DARKENS GRAY HAIR

It's Grandmother's Recipe to Restore Color, Gloss and Attractiveness.

Almost everyone knows that Sage Tea and Sulphur, properly compounded, brings back the natural color and lustre to the hair when faded, streaked or gray. Years ago the only way to get this mixture was to make it at home, which is messy and troublesome. Nowadays, by asking at any drug store for "Wyeth's Sage and Sulphur Compound," you will get a large bottle of this famous old recipe, improved by the addition of other ingredients, at a small cost.

Don't stay gray! Try it! No one can possibly tell that you darkened your hair, as it does it so naturally and evenly. As you dampen a sponge or wet brush with it and draw this through your hair, taking one small strand at a time; by morning the gray hair disappears, and after another application or two, your hair becomes beautifully dark, glossy and attractive.

Wyeth's Sage and Sulphur Compound is a delightful toilet requisite for those who desire dark hair and a youthful appearance. It is not intended for the cure, mitigation or prevention of disease.