

BEFORE PLANTING  
**Fall Seed**  
READ THIS

In buying our Seed we pay more attention to PURITY  
and GERMINATION than we do to price. Our Motto is  
"RELIABLE SEED AT REASONABLE PRICES."

STILL MAKING FRIENDS  
**F. B. ASHCRAFT**  
AT THE OLD STAND



**Pleasure, Comfort and Satisfaction**

COME FROM AN ATTRACTIVE INTERIOR  
BEAUTY IN FURNITURE DOES NOT NECESSARILY IMPLY THE  
MOST COSTLY MATERIALS, BUT RATHER GOOD JUDGMENT IN SE-  
LECTION.

WE SATISFY THE MOST DISCRIMINATING TASTE HERE AT A  
VERY REASONABLE COST.

RESULTS ARE FOOTRULES AND YARDSTICKS THAT MEASURE  
VALUES. THEY ARE SCALES THAT WEIGH MERIT. A PLEASSED  
CUSTOMER IS A PROFITABLE CUSTOMER.

WE ARE HERE TO PLEASE YOU.

**T. P. Dillon & Sons**

**Bargains Every Day**

AT

**JOSEPH'S**

SHOE DEPARTMENT—WORK AND DRESS SHOES

Children's Shoes ..... \$1.25, \$1.48, \$1.98, \$2.48, \$2.98, \$3.25  
Women's Shoes ..... \$2.98, \$3.25, \$4.50, \$4.98, \$6.98, \$7.50  
Men's Shoes ..... \$2.98, \$3.98, \$4.98, \$6.98, \$7.98, \$9.00

Come and look for a Special Men's Work Shoe at \$4.98. Regular  
\$7.00 Shoes.

SUITS FOR MEN AND BOYS—Very stylish, prices from \$5.98 to  
\$7.50.

MEN'S AND BOYS PANTS—From ..... 65c to \$7.98.

We still handle a good variety of LADIES' COATS, COAT SUITS  
AND SKIRTS.

Our UNDERWEAR Department is complete.

Our DRESS GOODS Counter is full of bargains.

**AB JOSEPH COMPANY**

The Green Front Store.

Laurinburg

Monroe

**ECLIPSE SUN NOT VISIBLE HERE**

Thick, Overhanging Clouds Obscured  
View That Was Expected.

Persons who expected to get a  
glimpse of the sun's annual eclipse  
scheduled for Saturday morning be-  
tween the hours of 8 and 10 o'clock  
were disappointed when they found  
that they were to be deprived of the  
opportunity by reason of a very  
cloudy day. Low overhanging clouds  
hid the solar phenomenon from view.  
It was not doubted that the eclipse  
occurred, but it could not be observ-  
ed because of the bad weather that  
prevailed.

It was the first annular eclipse  
since 1902, and said by the astron-  
omers to be the last of that kind due  
before 1920, so that many persons  
now living will never have the chance  
to see another. An annular eclipse  
is one in the form of a ring. Like all  
solar eclipses, it is produced by the  
moon coming between the earth and  
the sun.

**St. Paul's Episcopal Church.**

The Rev. E. A. Penick, Jr., rector of  
St. Peter's, Charlotte, and Mr. L.  
C. Burwell, also of Charlotte, will ad-  
dress the congregation of St. Paul's  
church here tomorrow (Wednesday)  
night at half past seven o'clock in  
the interest of the Nation-Wide Cam-  
paign for the Church's Mission. This  
effort of the Episcopal church in the  
United States for more vital activity  
in its missionary work, both at home  
and abroad, is drawing toward its  
final stages. The public is cordially in-  
vited.

On Thursday, Thanksgiving Day,  
there will be the special Thanksgiv-  
ing Day service, with sermon by the  
rector at eleven o'clock. The annual  
offering for the Thompson Orphanage  
at Charlotte will be received at this  
service.

**Mrs. Charlie Chaplin Starred in West-  
ern Drama.**

Beautiful Mildred Harris—now  
Mrs. Charlie Chaplin—the beautiful  
star of Lois Weber's Jewel Produc-  
tion, is appearing in the first six-  
reel Western drama of her screen career  
and, with the support of such motion  
picture favorites as William Stowell,  
Wharton Jones and Alfred Pagant, is  
scoring a new triumph in a different  
role than any she previously has at-  
tempted.

The title of the charming young  
star's newest feature is "When a Girl  
Loves," a thrilling story of the re-  
generation of an outlaw leader, an  
atheist, through the influence of a  
girl's love. The story was written  
and adapted for the screen by Miss  
Weber and produced by her and Phil-  
lips Smalley. It is a smashing pre-  
sentation of life in a mining town, full  
of thrills and heart interest, and  
alive with scenes of picturesque beau-  
ty.

The play deals chiefly with "Eagle"  
Ryan, leader of a band of outlaws  
and an atheist who openly voices his  
defiance of God, and Bess, the beau-  
tiful daughter of an Eastern minis-  
ter.

"When a Girl Loves" will be shown  
at the Pastime Theatre on Thanksgiv-  
ing day.

STATEMENT OF

**The Bank of Union**

MONROE, N. C.

NOVEMBER 17th, 1919

(Condensed from Report to the North Carolina Corporation  
Commission)

RESOURCES

Loans and Discounts	\$ 744,499.12
Furniture and Fixtures	6,041.25
Insurance Premiums	3,857.50
United States Liberty Bonds	17,600.00
Stocks	2,500.00
Cash on Hand and Due from Banks	386,650.52

\$1,161,148.39

LIABILITIES

Capital Stock	\$ 50,000.00
Surplus and Undivided Profits	94,352.93
Notes Re-discounted	10,000.00
Dividends Unpaid	807.50
Deposits	1,005,987.96

\$1,161,148.39

We beg to call your attention to the above statement showing  
**Total Deposit of \$1,005, 987.96, a gain of \$476,782.61 in deposits in  
one year,** evidencing the confidence and support accorded us by  
the people of this section. This increase is not the result of any  
unusual transaction—every dollar of the above deposits belongs  
to the people of this community, and we wish to express our ap-  
preciation to our friends in assisting us to make this showing pos-  
sible. Our facilities justify confidence and patronage. We invite  
both large and small depositors to join and grow with us.

**The Bank of Union**

**Christmas Suggestions**

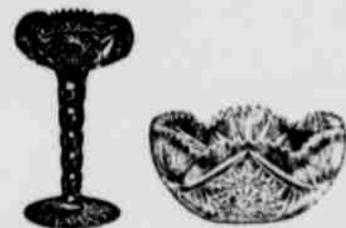
Considering the shortage of suitable Christmas gifts on the mar-  
ket today, this company considers itself fortunate in being able to  
buy a \$5,000.00 stock of samples from a reliable jewelry house that  
will enable us to sell them at wholesale prices. The samples are  
now on display at our store-room. Included in this large stock are:

IN FRENCH IVORY—Combs, Mirrors, Brushes, Jewel Cases,  
Manicure Pieces, Puff Boxes, Hair Receivers.

IN SILVER—Dorines, Picture Frames, Toilet Sets, Manicure  
Sets, Combs and Mirror Sets, Vanity Cases, Shaving Sets.

IN LEATHER—Hand Bags, Purses, Music Rolls, Belts, Victory  
Bags, Writing Pads, Traveling Cases.

HUNDREDS OF OTHER ARTICLES—including Jewelry in  
Solid Gold, Brooch Pins, Scarf Pins, Rings, Watches, and Vest  
Chains.



**The W. J. Rudge Co.**  
Jewelers and Stationers.

