

# General Description of the New HERCULES Throttling Governed Kerosene Engine

**CYLINDER**—Semi-steel, accurately machined and reamed to perfect "gun-barrel" finish, fitted with ground piston and rings, insuring perfect compression, and reducing friction to the lowest possible minimum. Cylinder is attached to main frame by means of machine tongue and grove method.

**MAIN FRAME**—Accurately machined and reinforced across top under crank, contains heavy galvanized fuel tank.

**BEARINGS**—Main bearings, as well as crank pin bearing, are of the white bronze REMOVABLE type, making it possible to replace them at any time.

**CAM**—Hardened steel attached to cam-gear by being pressed over machined hub and riveted, can be replaced.

**GOVERNOR**—High speed, fly-ball type, pronounced by the most eminent authority in mechanical engineering as the most accurate, as well as the most economical governor ever used on an internal combustion engine.

**FUEL SUPPLY**—The fuel is drawn from the supply tank by means of a pump, which is built into the carburetor holding fuel supply at a constant level, insuring a perfect mixture at all speeds.

**SPEED**—The HERCULES KEROSENE ENGINE is equipped with an effective speed changing device which enables the operator to change ten, twenty, fifty or a hundred revolutions per minute while engine is in operation.

The superior quality of the HERCULES, the extremely attractive prices and the BIG saving in fuel cost, makes the HERCULES the most desirable and the most profitable engine agency obtainable.

Full details costs you but one cent—mail card today.

## Monroe Hardware Co.

RETAIL DEPARTMENT.

### CAPITAL OF MEXICO AN ANCIENT AND UNUSUAL CITY

Situated a Mile and a Half Above the Sea — Has Remarkable Theaters, Cathedrals and Strange Customs.

"In all the world one cannot find a more remarkable capital than Mexico City," says William Joseph Shonwiler, in a communication to the National Geographic Society, concerning an interest center of the present Mexican revolution.

"Situated in a valley whose floor is a mile and a half above the level of the sea, and whose borders are surrounded by towering mountains; located where the beautiful volcanoes, Popocatepetl and Ixtaccihuatl, rear their snow-capped heads above the plain and stand eternal guard over it, its situation is one of rare beauty and grandeur. Its climate is mild, the temperature ranging from thirty-five to seventy degrees, with a mean of sixty-five degrees. No man sleeps without a blanket in Mexico City, nor needs an overcoat at midday.

"Prior to the conquest the lakes of the Mexican Valley were extensive and the barges of the Aztecs sailed uninterruptedly from the gates of Chapultepec to Ixtapalapa. A large number of canals intersected the ancient metropolis of Tenochtitlan and connected with the lakes in the suburbs, making it a sort of new world Venice.

"In 1697 the celebrated Portuguese engineer Martinez undertook to drain the Valley of Mexico by cutting a canal through the mountains. The work, however, was largely a failure, since it drained only one small lake and an unimportant river, leaving Lakes Texcoco and Chalco still perpetual menaces to the city.

In 1897 a huge drainage canal thirty miles long was begun, which was completed in 1909, at a cost of about eight million dollars, American gold. Its completion removed the danger of inundations from Mexico City and solved the problem which occupied the thoughts and engendered the fears of the Aztecs as far back as 1449.

"Mexico City is the most complete mixture of the ancient and the modern to be found in the New World. The old city might date anywhere from the tenth century, from its appearance. The new city is ultra modern, and you step from the sixteenth to the twentieth century by walking across the street.

"The parade ground of Mexico City is the Avenida de San Francisco. This short street extends from the Mexican White House to the Alameda, and is only about twenty-four feet from curb to curb. Here, at the approach of twilight, every smart equipage in the capital comes. Down the one side of the street and up the other side moves the procession at a slow walk, while everybody looks at everybody else.

"As Avenida de San Francisco unites the old and the new cities, so does the Cinco de Mayo (Fifth of May) unite the cathedral, statelyst of all the religious edifices on the continent, with the theater, most beautiful of all the amusement places in America. The Cinco de Mayo is the Wall Street of Mexico, and the buildings which line it are modern in every respect.

"The Paseo de la Reforma, extending from Chapultepec to the Avenida de Jaurez, a short avenue connecting the Paseo with Avenida de San Francisco, is one of the finest driveways of the world.

"The city is full of interesting places. Whether it be the cathedral, which rears its majestic towers to heaven on the very spot where the sacred temple of the Aztecs stood, and where tens of thousands of human beings were sacrificed to the sun; whether it be the Hospital de Jesus, built on the site where Cortes and Montezuma first met, and supported to this day from the revenues of the estate of Cortes; whether it be the Jockey Club, housed in the beautiful House of Tiles; whether it be the bronze equestrian statue of Charles IV of Spain, declared by Humboldt to be the second only to the statue of Marcus Aurelius at Rome, or whether it be Chapultepec, with its memories of the American triumph in Mexico, there is no place with more attractions from a historic standpoint than Mexico City.

"The national pawn shop is one of the unique institutions of the capital. It was founded by Pedro Jose Romero de Terreros, the owner of the fabulously rich mines at Real del Monte. Here money may be borrowed on chattels at very low rates of interest and every thing is pledged, from a pair of cock's spurs to an automobile and from a silver ring to an iron safe. The smallest loan made is twelve cents the largest four thousand dollars.

"From the American standpoint burial customs in Mexico are very strange. A grave may be rented in perpetuity or for a term of years. If the latter option is taken and the rent is not paid promptly at each recurring period, the bones of the occupant are ejected and thrown upon a great bone pile. These bones from time to time are cremated.

"At Mexico City's great city of the dead, where one hundred and sixty thousand people have been buried, there is a cave which contains hundreds of tons of human ashes. The Mexican law forbids services at the grave since the separation of church and state under Benito Juarez."

A village girl Eloped in her father's clothing. And the next day the local paper came out with the account of the elopement headed: Flees in Father's Pants.

**Dr. Kemp Funderburk**  
DENTIST  
Office over Waller's Old Store.  
Modern Methods  
Employed

**DR. B. C. REDFEARN.**  
DENTIST.  
Office over Heath-Morrow  
Company.  
Phone 232. Monroe, N. C.

### Braswell For Legislature.

The voters of Union county will determine by their ballots next Saturday who will represent them in the next legislature of North Carolina. Having known C. J. Braswell for many years we wish to say that he is one of the best qualified men we know to represent this county at this critical period. He knows the needs and conditions of the county as few men know them. As a poor boy he began farming during the panic of the 90's and by hard work and economy has become one of the most successful farmers of the county. With splendid education, well informed on current events, a good debater, he could render a good account of himself on the floor of the House, something not every farmer could do. He takes a lively interest in public affairs and has been identified with every movement looking to the upbuilding of our county and state. He is not the candidate of any man, clique or ring. With C. J. Braswell in the legislature every class and every section of our county will not a square deal. We are glad to say that his nomination is conceded on every hand. Let every voter come to the polls on next Saturday and vote for C. J. Braswell and have this county represented in the next legislature by one large, energetic and progressive farmer. He will see that the farmer gets a square deal.

FARMERS.

### To the Democratic Voters of Union County

Owing to the fact that I am a farmer and have been giving all of my time and attention to my farm this spring, it has been absolutely impossible for me to see the majority of you in person, but since I am a candidate for Sheriff of Union county I would like to state that I will appreciate the support of every man who sees fit to give me the same on June 5th. I have been brought up on the farm and have given all of my time to farming except that time given to performing my duties as constable of my township, which position I have held for a number of years. I have the kindest feelings for the other candidates for the office of Sheriff of this county, but I feel that my experience and my general qualifications eminently fit me for the position and I pledge you that every effort will be made by me if elected to give to every man a fair and square deal in every matter which comes before me. If elected I shall have no preferences, but will endeavor to do my sole duty. I regret that I cannot see you personally but I will greatly appreciate any and all support given me at the polls on June 5th. Very respectfully,  
WILL H. PRESLEY.

"While your grit lasts, you will."

### ADMINISTRATOR'S NOTICE.

Having this day qualified as administrator of A. E. Godwin, deceased, late of Union county, N. C., this to notify all persons having claims against the estate of said deceased to exhibit them to the undersigned on or before the 15th day of April, 1920, or this notice will be plead in bar of their recovery. All persons indebted to said estate will please make immediate payment.

This 15th of April, 1920.  
T. P. DILLON, Administrator.  
T. F. Limerick, Atty.

## JUNK Wanted

We are always in the market for iron, metal of all kinds, bones, paper, etc. Open every day.  
Monroe Iron & Metal Co.  
Near Freight Depot.

## SEABOARD Air Line Railroad

Trains	Arrive	Leave
No. 14 from Charlotte	5:50 a. m.	5:55 a. m. for Wilmington.
No. 12 from Atlanta	6:45 a. m.	6:50 a. m. for Richmond.
No. 24 from Rutherfordton	10:55 a. m.	11:00 a. m. for Raleigh.
No. 5 from Richmond	7:55 a. m.	8:00 a. m. for Atlanta.
No. 19 from Wilmington	11:45 a. m.	11:50 a. m. for Charlotte.
No. 15 from Monroe	8:10 a. m.	8:10 a. m. for Rutherfordton.
No. 29 from Monroe	11:55 a. m.	11:55 a. m. for Atlanta.
No. 31 from Raleigh	2:40 p. m.	2:45 p. m. for Rutherfordton
No. 20 from Charlotte	5:50 p. m.	6:00 p. m. for Wilmington.
No. 20 from Atlanta	5:50 p. m.	Monroe.
No. 16 from Rutherfordton	9:10 p. m.	Monroe.
No. 6 from Atlanta	9:35 p. m.	9:45 for Richmond.
No. 13 from Wilmington	10:35 p. m.	10:45 p. m. for Charlotte.
No. 11 from Portsmouth	11:35 p. m.	11:45 p. m. for Atlanta.

C. T. HARRILL,  
Ticket Agent.

JOHN T. WEST,  
Division Passenger Agent.

### CHOOSE CAREFULLY.

The selection of a bank should be a matter for careful consideration.

Look into its personnel, its directorship, its financial strength, its methods and its principles.

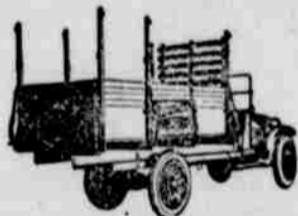
## THE Farmer's & Merchants Bank

The Bank That Backs the Farmer.

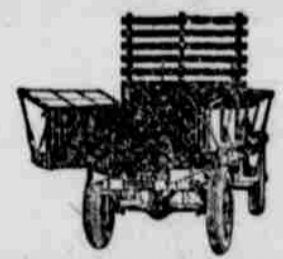
M. K. Lee, Pres. C. B. Adams, Vice-Pres.  
H. E. Lee, Cashier.

# Commerce TRUCKS

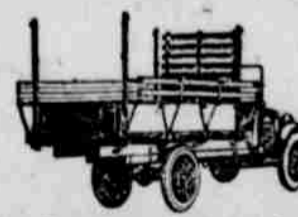
## Five Bodies in One on the Pneumatic Cord Tire Equipped Commerce Chassis



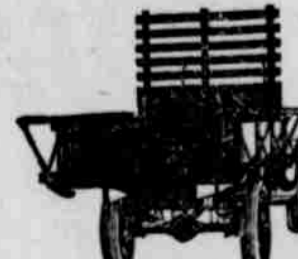
Body Grain, Tight and Loose Materials



Body Loose, Packed or Boxed Materials



Body Country Produce and Passengers



Body Handling Hay—Diversified City Loads

The Commerce Every way Body meets the rapidly increasing demand for a motor truck body that enables the farmer to use his truck to economically haul a load every way.

This body has its usefulness in city transportation problems, for it will handle diversified loads and is available to meet problems that one special type of body does not provide for.

### For the City Transports

Raw Materials  
Finished Products  
Passengers  
Pick up Service  
Bottles  
Baggage  
Express  
Feed and Grain  
Coal, Wood, Ice  
Furniture  
Hardware  
Transfer and Storage  
Fruits  
Packing House Products  
Highway Repair Materials  
Gardener's Truck  
Dairy Products, etc., etc.

### For the Farm Hauls

Grain in Bags or Bulk  
Bulky Produce  
Farm Produce in Crates  
Cement in Bag or Bulk  
Barnyard Fertilizer  
Poultry in Crates  
Farm Machinery  
Dressed Meats  
Fence Posts  
Boxes or Crates  
Fruit and Vegetables in Baskets,  
Baled Hay, Wheat, Oats or Corn  
Stalks  
Coal, Dirt, Gravel  
Hogs, Cattle, Sheep  
Cotton, Sugar Cane  
Apples, Potatoes, Melons, Cabbages, etc.

A Commerce Truck Will Measure Up in Your Service

MUNGO BROS., Dealers  
Pageland, S. C.

THE COMMERCE MOTOR CAR CO., DETROIT, MICH.  
Largest Exclusive Mfgs. of One to Two Ton Trucks in America



Stock Rack with Watertight under Body