

In a recent test of hundreds of people who smoked only Camels for 30 days, noted throat specialists, making weekly examinations, reported

Not one single case of throat irritation due to smoking Camels!



FARM LAND PRICES DROP IN AMERICA

Washington, April 21—The Government reported today that the war-inspired boom in farm land prices apparently has passed its peak.

For the first time in 10 years, the general level of farm real estate values has declined. A 15 per cent drop in farm product prices from the post-war record was said to be a major cause of the decline in land prices.

The Bureau of Agriculture Economics said the index of land values on March 1 this year was one per cent below that of last Nov. 1. This is the first time since 1939 that the index has shown a decrease.

The level of land values still was 3 per cent above March 1, 1948.

The bureau foresaw further declines, but it said they are likely to lag behind decreases in farm product prices.

"Since land values in the country as a whole have increased about two-fifths as much as has net farm income since 1940, however, the decline in land values probably will lag behind price declines," the bureau said.

The bureau also reported a slowing up of a demand for farms. It said substantially fewer farms were sold last year than in the previous year. It said almost a third fewer sales were made during the past year than during the peak year 1946.

Sarah Ann's Cooking Class

Liver Loaf

- 1 1-2 lbs. liver
- 1 cup bread crumbs
- 1 cup milk
- 1 onion
- 1 egg
- 1 teaspoon salt

Pour boiling water over liver, remove outside skin and veins. Put liver and onion through food chopper. Add salt bread crumbs, beaten eggs and milk. Mix well and place in a greased loaf pan. Cover loaf with a greased paper. Uncover last 15 minutes of baking. Bake in an oven 325 degrees for 1 to 1 1/4 hours.

Ham and Eggs in Ramekins

- 1 cup finely chopped cooked ham
- 1-2 cup fine bread crumbs
- 1 teaspoon minced parsley
- 2 tablespoons butter, or margarine
- 1-2 teaspoon dry mustard and enough thick cream to blend eggs

Mix ham, bread crumbs, parsley, butter and mustard. Place a layer of mixture into individual ramekin dishes. Break an egg into each dish. Sprinkle with buttered bread crumbs. Bake in an oven 350 degrees until the white of the egg is firm.

Can Black-Draught Help Physical Fatigue?

Yes, Black-Draught may help physical fatigue if the only reason you have that listless feeling is because of constipation. Black-Draught, the friendly laxative, is usually prompt and thorough when taken as directed. It costs only a penny or less a dose. That's why it has been a best-seller with four generations. If you are troubled with such symptoms as loss of appetite, headache, upset stomach, flatulence, physical fatigue, sleeplessness, mental haziness, bad breath — and if these symptoms are due only to constipation — then see what Black-Draught may do for you. Get a package today.

NOTICE

NORTH CAROLINA
MCDOWELL COUNTY

Under and by virtue of the power of sale contained in a certain Deed of Trust executed by Carl Surratt and wife, Mary Surratt dated the 14th day of August, 1945, and recorded in Book 59, Page 214, in the office of Register of Deeds of McDowell County, North Carolina, default having been made in the indebtedness thereby secured and said Deed of Trust being by the terms thereof subject to foreclosure, the undersigned trustee will offer for sale at public auction to the highest bidder for cash at the courthouse door in Marion, North Carolina, at noon, on the 14th day of May, 1949, the property conveyed in said Deed of Trust the same lying and being in McDowell County, State of North Carolina, and more particularly described as follows:

Being all of Lots No. 103 and 104, as shown on a certain map of Finley Heights Annex, surveyed July 1943 by Weldon Willis, surveyor, sub-division plat by Clyde C. Sorrels September 1944 and recorded in the office of Register of Deeds for McDowell County, North Carolina, in Map Book 1, page 207, to

YOUR HOME LOOKS BETTER LONGER

PAINTED WITH DU PONT PAINTS

And remember — it always costs more NOT to paint!



Makes white houses stay white!

DUPONT HOUSE PAINT

Cleans itself!

You can have the whitest house in your neighborhood! Let us tell you how Du Pont No. 40 White House Paint keeps itself clean — keeps your house gleaming white, always bright.

- ★ Starts white, stays white
- ★ Resists rust, rot, and decay
- ★ Excellent coverage and hiding



★ Also available in popular "self-cleaning" tints
\$5.66 gal.

Here's paint made to walk on!

DU PONT EXTERIOR PORCH PAINT

Gives new beauty—longer life—to wood or concrete porch floors. Dries quickly to a hard, glossy finish.

- ★ A tough, hard finish
- ★ Made in six popular colors

★ Takes hard knocks in its stride
\$5.66 gal.

Trim colors that hold their gloss and color! **DU PONT DULUX**

TRIM & TRELIS FINISHES



Resist Fading!

Want shutters and trim to stay bright, new looking? Then use Du Pont DULUX Trim and Trellis Finishes. Made on an exclusive scientific formula, they give you these outstanding advantages:

- ★ Resist fading—retain gloss and color
- ★ Spread easily—cover solidly
- ★ Dry quickly to a hard film
- ★ Resist mildew and fungus

\$2.54 qt.

Keeps metal surfaces from rusting!

DULUX METAL PROTECTIVE FINISH

Gives long-lasting protection, enduring good looks to all metal surfaces, indoors and out.

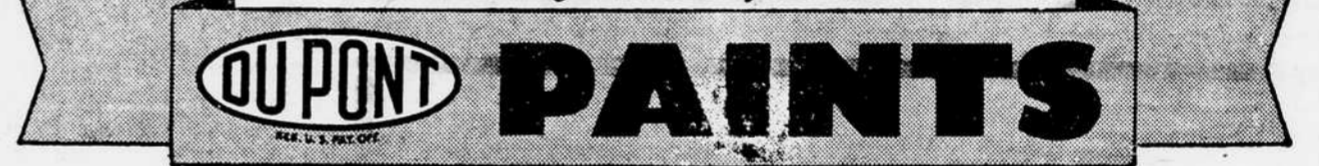
- ★ One of the famous "Dulux" family of finishes
- ★ Exceptionally resistant to fading and cracking

★ Made in five glossy colors and black
\$1.91 qt.

Marion Appliance and Paint Store

17 State St. Phone 308

Save the surface and you save all!



HERE'S AN Idea

WORTH TALKING OVER

... can farming be made more profitable?



We're not promising the moon, but we'd like to see if we can help you make more money, or save work. We do know that on a good many farms we've been able to make recommendations that worked out profitably.

At least, it's an idea worth talking over. We are making farm visits all the time and hope to reach you soon. However, we invite you not to wait but drop in anytime. You'll find that we are really interested in discussing your problems and helping all we can.

We do know that the future of the farmer depends greatly on the efficiency of all farm operations. We know something about this subject. That's why we think it will pay you, as well as us, to "get better acquainted."



We are headquarters for Ford Tractors, Dearborn Farm Equipment and genuine Ford Tractor and Dearborn Implement parts. Call on us any time for prompt, efficient tractor and implement service.

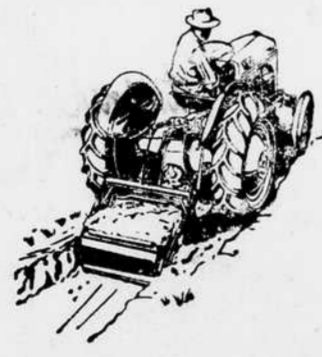


Don't miss out on this one!

DEARBORN LIFT TYPE SCOOP

You can't beat it for making roads, ditches or terraces, building dams and ponds, excavating basements or cleaning out manure. Useful for carrying things, too.

Attaches quickly to Ford Tractor, lifts and lowers by Hydraulic Touch Control, trips easily. Built strong. See it!



Sain Tractor & Implement Co.

117 East Court St. Marion, N. C.

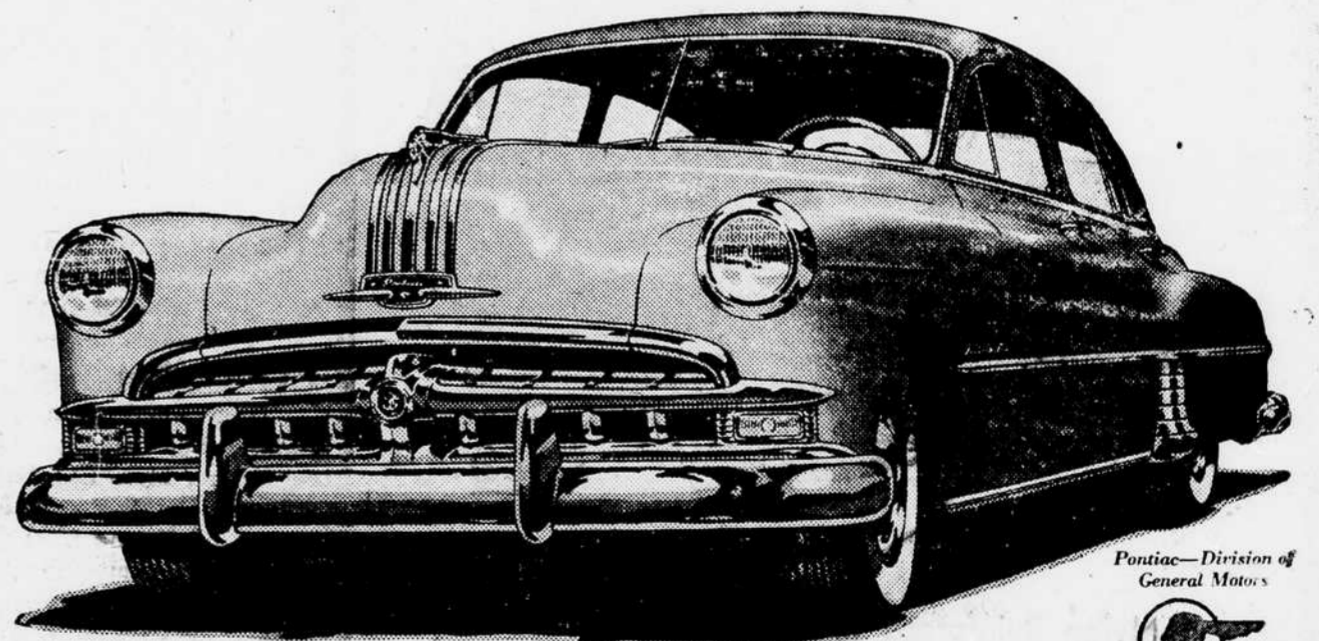
FIRST NATIONAL BANK of MARION, N.C.

W. R. CHAMBERS, President
W. L. MORRIS, Vice-President
W. F. GRANT, Cashier
MILTON L. CAMPBELL, Executive Vice-President



See it! Drive it!

The New '49 PONTIAC



Even Better than it Looks!

When you observe its fresh and fleet new beauty, it might seem unbelievable when we say that the 1949 Pontiac is even better than it looks. But after you've experienced its really exciting performance, we're sure you, too, will agree that in basic goodness, it surpasses its own good looks!

It's hard to believe a car so low-priced could combine the flashing sleekness of Pontiac's new styling . . . the gracious comfort of Pontiac's new

Vision-Aire interiors . . . and the almost incredible smoothness of Pontiac's exclusive "Travelux" Ride. Add to those unique attractions, the "zing" . . . the economy and proved dependability of Pontiac's famous improved straight eight and six cylinder engines . . . and the matchless driving enjoyment of GM Hydra-Matic (optional at extra cost) and you've got something almost irresistible! There's no better time than now to see it and place your order.

EAST COURT MOTOR CO.

EAST COURT ST.

PHONE 39

which reference is hereby made for a full and complete description of the lands herein conveyed.

This deed is made subject to right-of-way heretofore granted to Duke Power Company for transmission

and distribution of electricity. This the 14th day of April, 1949. HUGH BEAM, Trustee.