

AMENDMENT PERMITS HUNTERS TO USE PARKWAY

Under an amendment to the National Park Service rules and regulations hunters are permitted to make limited use of the Blue Ridge Parkway in conjunction with hunts for bear and deer on adjacent land it was announced today by Superintendent Sam F. Weems. In making the announcement Mr. Weems emphasized, however, that the Blue Ridge Parkway like all areas within the National Park Service is a sanctuary for all types of wildlife and that hunting of any kind is prohibited within the boundaries of the Parkway.

For the information of all hunters the special amendment reads as follows:

"During the hunting season, hunters may, under permits issued by the Superintendent of the Blue Ridge Parkway, park vehicles in designated parking areas and cross the parkway lands from and to their vehicles with dogs on leash, firearms with breech or chamber open, and game lawfully killed on lands adjacent to the Blue Ridge Parkway."

Two parking areas along the North Carolina portion of the Parkway have been designated for this use. These are Singe Cat and Ridge Junction. For the convenience of the hunters, the Superintendent has arranged for District Ranger C. C. Gaynard, Box 146, RFD 1, Spruce Pine, North Carolina, to issue permits.

Each hunter using a parking area must have a permit.

In each of the designated parking areas a sign indicating its name is erected so that there will be no difficulty in identifying the area in which the hunters cars may be parked.

In making application for a permit, the hunter, in addition to listing his name and address, should include the make, model, year, and license number of the vehicle to be driven and the particular parking area or areas desired to be used.

State College Answers Farm Questions

Question: Is consumption of poultry meat increasing or decreasing in the United States?

Answer: W. G. Andrews, extension poultry specialist at State College, says consumption is increasing. During 1949, he says, the average American will eat about 25.2 pounds of poultry meat as compared with an average of 17.9 pounds during the years 1935-39. Poultrymen believe that consumption may rise as high as 40 pounds by 1960. Turkey meat is also appearing on the family menu more often. For the 1935-39 period 2½ pounds was the average amount of turkey meat eaten per person. In 1949 the average will be 4.5 pounds, with a 1960 goal of eight pounds per person. Mr. Andrews also points out that about 55,000 births occur in the world every day, and there is an ever-increasing need for more food. He expects the demand for poultry products to remain good for many years to come.

Question: What is multiple crop insurance?

Answer: It is a plan whereby a farmer may obtain protection of his investment in more than one crop on the same farm. Like the single-crop plan, it covers only the growers actual investment in his crop, and coverage and rates are based on areas of similar productivity and risk, not on individual farms. County committees screen out poor risks—irresponsible farmers or those who follow poor practices. Except for tobacco, where

the value of the product cannot be determined accurately until the crop is cured, crop insurance is limited to the period when the insured commodity is in the field. Tobacco is covered also while in the barn being prepared for market.

The multiple-crop plan is being tried this year in Perquimans county, North Carolina. Congress has authorized the Federal Crop Insurance Corporation to expand the program to 50 counties (at least one in each State) in 1950, and to add 25 counties each year through 1953.

Coleman Hoppes In "Operation Miki"

Coleman Junior Hoppes, seaman, USN, son of Mr. and Mrs. Coleman Hoppes of route 1, Marion, is serving as a crew member aboard the heavy cruiser USS Toledo, which is participating in "Operation Miki," a large-scale amphibious exercise in the Pacific.

The maneuvers, scheduled to continue through October and November, involve nearly 40,000 soldiers, sailors, and marines, and are designed to dislodge an imaginary aggressor force from the Hawaiian Island. General Mark W. Clark, Commanding General of the Sixth Army, is overall commander.

"Miki," a Hawaiian word meaning, "readiness" or "diligent", is one of a number of joint exercises planned by the Joint Chiefs of Staff for the Army, Navy and Air Force, each designed to accomplish a specific mission for maintaining the armed forces at a high degree of efficiency.

N. C. Crop Income Up For First Nine Months Of 1949

Washington, Nov. 5—North Carolina farmers received approximately one per cent more for their crops and livestock products during the first nine months of this year than during the same period last year, the agriculture department has reported.

Cash receipts for farm products in North Carolina during the first nine months of this year amounted to \$469,059,000 as compared to \$466,677,000 during the same period last year.

Of this year's farm income in the state, \$358,564,000 came from sale of crops and \$110,495,000 came from sale of livestock and livestock products.

In Andorra, Europe's fifth smallest country (191 square miles), the sheep outnumber the people almost three to one. The latest official count, notes the National Geographic Society, puts the sheep population at 17,000, the human at 5,900.

MOTHER
I looked at an old faded photo
The curls were clustered tight
The features were young and beautiful
The eyes beamed with youthful light.

I looked at another picture
A madonna one might say
A little girl was kneeling by it
Kneeling there to pray.

And still another picture
With features that once were fair
With faded cheeks and eyes grown dim
And glistening snow-white hair.

I saw beyond that picture
I saw a mother's love
Born of the glory of Heaven
Born of the Angels above.
—Annie Burgin Hemphill.

COST OF FARM SUPPORT
The Government is predicting that it will cost about \$820,000,000 to support farm prices during a two-year period ending June 30, 1951. By cost is meant the amount of money the Government will lose on surplus products which it will buy at support price levels and sell or dispose of at lower prices. The period covers largely the 1949 and 1950 farm crops.

CONSERVATION NEWS

By L. B. HAIRR

Guy Little of Providence community reports that his pasture that was seeded this fall is looking fine. "I have learned this fall how to prepare a seedbed for grass and clover on sloping land," Mr. Little pointed out recently. He said to rip the area on the contour with a soil ripper then finish the seedbed preparation with the disc. This breaks up the sub-soil and at the same time it leaves the top soil on the surface with the organic material. A seedbed prepared in this manner will absorb rain like a sponge and reduce the run off and erosion, according to Mr. Little.
B. E. Allison of Crooked Creek

RELIEF AT LAST For Your COUGH

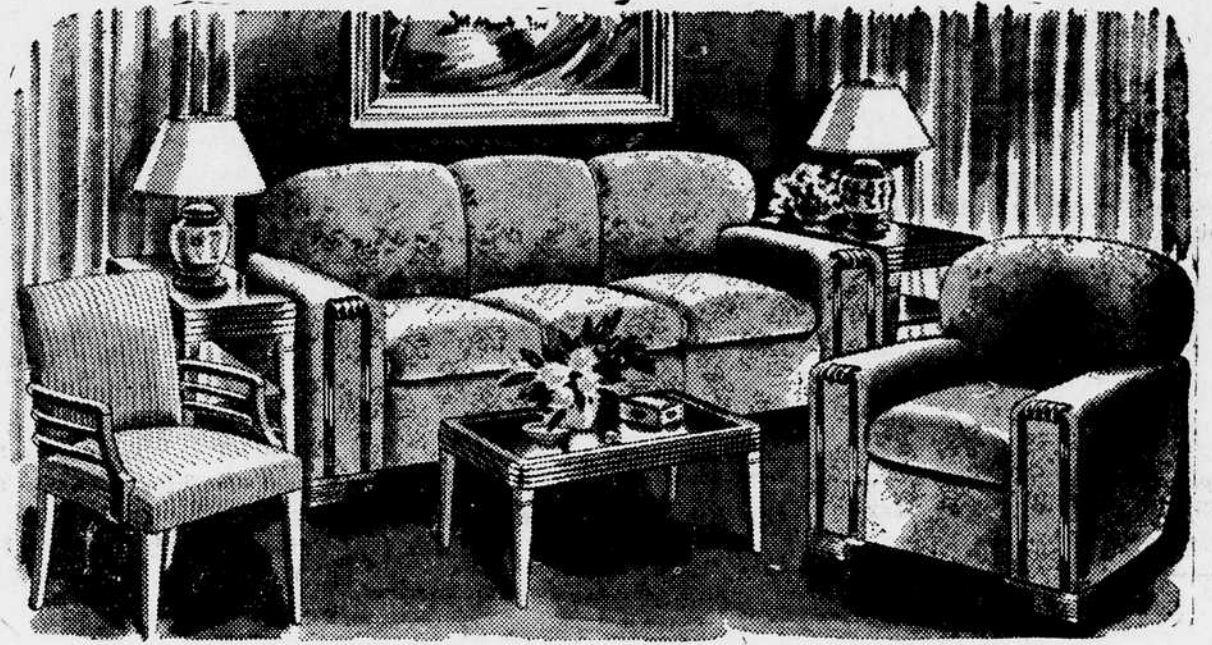
Creomulsion relieves promptly because it goes right to the seat of the trouble to help loosen and expel germ laden phlegm and aid nature to soothe and heal raw, tender, inflamed bronchial mucous membranes. Tell your druggist to sell you a bottle of Creomulsion with the understanding you must like the way it quickly allays the cough or you are to have your money back.
CREOMULSION
for Coughs, Chest Colds, Bronchitis

has found that it pays to keep his This prevented the soil from wash- apple orchard sowed in cover crops. ing, Mr. Allison pointed out. Even though we had heavy rains. Treating the area is only a part this summer and fall, there was lit- of a complete soil and water con- tle soil erosion in Mr. Allison's or- servation plan Mr. Allison is fol- chard. The thick sod of grass and lowing on his farm in co-operation lespezea held the water back and with the Catawba Soil Conservation allowed it to soak into the ground. District.

GRATIFYING!

Nothing is more gratifying than Liquid Capudine to quickly relieve headache or neuralgia. You see, Capudine's pain-relieving ingredients are already dissolved—all ready to start bringing relief. Capudine is a prescription type formula, containing four carefully selected ingredients which work together to relieve simple pains. So get Liquid Capudine, for quick relief. Follow label directions.

Beauty For Your Living Room



Settings For The Best Of Life

Your family life is the richest portion of your existence. Tend it carefully . . . Nourish it to full bloom with rich surroundings. The original cost of your beautiful rooms is nothing compared to the years of pleasurable service you get from them and the quality of the happiness they breed, among yourselves every day and among the cherished friends you entertain.

BEDROOM SUITES
COUCHES
ODD CHAIRS
RADIOs and LAMPS
PLASTIC DINNETTES

KITCHEN CABINETS
CEDAR CHESTS
OIL HEATERS
RUGS
JOHN

We are headquarters for furniture of all kinds. Drop in and see our line.

CONVENIENT PAYMENT PLAN

LAUGHRIDGE FURNITURE CO.
"QUALITY FURNITURE --- ALWAYS"
MARION, N. C.

West Henderson St. Phone 254-J

GIVE IT A TRY BEFORE YOU BUY!



Try a team that's a driver's dream! Try the "Rocket" Engine plus Hydra-Matic Drive—and you'll know it's Oldsmobile for you! Right from the start, the "Rocket" whispers the smoothest song of power you've ever heard! As you touch your toe to the gas pedal—Oldsmobile's Hydra-Matic transforms the "Rocket's" response into a velvet tide of flowing motion! And after that moment, each smooth, silent mile is a new adventure—an exciting experience you'll never forget! Best of all, the "Rocket" works with Hydra-Matic to give you really impressive gasoline savings! But thousands of words can't match one minute driving the Futuramic "88"—lowest-priced "Rocket" Hydra-Matic car. So phone your Oldsmobile dealer. Try the most famous engine-transmission team ever built. Then put your new car money on **OLDSMOBILE!**

Make a Date "88" with the **FUTURAMIC**
OLDSMOBILE
A GENERAL MOTORS VALUE

PHONE YOUR NEAREST OLDSMOBILE DEALER
Phone 126, C. C. BOLCH MOTOR CO., or visit 615 East Court St.

NOTICE
North Carolina
McDowell County
In The Superior Court.
OPAL C. STEVENS
vs.
WILBUR STEVENS
The defendant, Wilbur Stevens, will take notice that an action entitled as above has been instituted against him in the Superior Court of McDowell County, North Carolina, for the purpose of obtaining a divorce absolute from him on the grounds of two years separation, and also for the purpose of obtaining an order of the court granting to plaintiff custody of the children born to said marriage;
And said defendant will further take notice that he is required to appear before the undersigned Clerk of Superior Court of McDowell County, North Carolina, within twenty days after the 3rd day of December, 1949, and answer, demur or otherwise plead to said complaint, or the plaintiff will apply to the court for the relief demanded therein.
This the 3rd day of November, 1949.
S. D. MARTIN,
Clerk Superior Court.