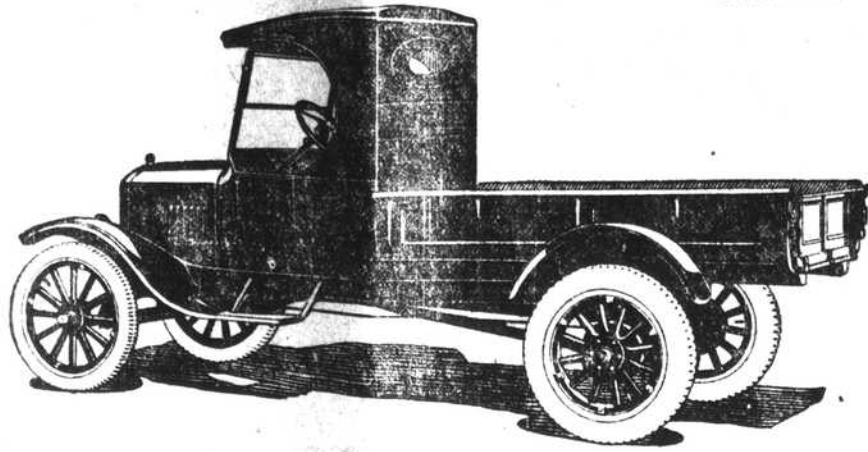


Ford Steel Body Truck \$490
L. o. b. Detroit



An All-Purpose Truck At A Remarkable Price

The new Ford all-steel body and cab mounted on the famous Ford One-Ton Truck chassis provide a complete all-purpose haulage unit at the remarkably low price of \$490. Built of heavy sheet steel, strongly re-inforced, this staunch truck is designed to withstand severe usage in a wide range of industries. Generous loading space, four feet by seven feet two inches, permits easy handling of capacity loads and provision is also made for mounting of canopy top or screen sides. Experienced drivers appreciate the weather-proof features of the steel cab, which is fitted with removable door-opening curtains.

Ford Motor Company
Detroit, Michigan

See the Nearest Authorized Ford Dealer

Ford

FM4-C

CARS · TRUCKS · TRACTORS

New Jewellery

NOVELTY BRACELETS
BRACELET WATCHES
VANITIES
COMPACT
Etc. Etc.

Let us show you — Yours to serve

Barnes Bros. Drug Co
Druggists & Jewelers

THE J. W. CARTER CO., THE BIG — 3 — ON THE CORNER
— SPECIALS FOR THIS WEEK —

CLOTHING

WE HAVE JUST RECEIVED A FULL LINE OF "CLOTHES CRAFT" AND "FIT RIGHT", BLUE SERGES, AND WE GUARANTEE EACH SUIT TO GIVE ENTIRE SATISFACTION OR A NEW SUIT IN EXCHANGE FOR THE OLD ONE. WHAT MORE CAN WE DO? IF YOU NEED A SUIT, COME AND SEE US.

MEN'S SHOES AND OXFORDS

W. L. Douglas in Dress Shoes and Oxfords. If you want a nifty pair of Shoes or Oxfords, SEE US. WORK SHOES. The very best that money can buy. Red Wings, Godman. A full line, just a little bit cheaper and a Big bit better than the other fellows.

SILKS

We have just received a full line of Silk in fancy and plain. Crepe de Chine, Crepe de Indes, COME and see our SILK and you will be convinced.

DRESS GOODS

Ginghams, Percales, Romper Cloth, Pajama Checks, Indian Head in plain white and all colors, with all colors guaranteed.

LADIES' SHOES

Oxfords and Pumps. We have all the leading colors, such as Browns, Bobolink, Beige, Grays, White and Patent Leather. We only ask you to COME and look and if we don't see you, we will take the blame.

HARDWARE

Our line of Hardware and Builders Materials are always full-up and running-over. If you expect to do any building SEE US for your Hardware. We will make the Prices light.

GROCERIES

We always have a full line of Groceries such as Flour, Meat, Lard, Sugar, Coffee, Tea, and Snuff, at prices that will please You.

GARDEN TIME IS HERE AND WE HAVE A FULL LINE OF IRISH POTATOES, ONION SETS, AND ANYTHING YOU WANT IN GARDEN SEED.

THE AIM OF FARMING IS TO PRODUCE SALABLE PRODUCTS

Raleigh, N. C., March 17.—Where does marketing begin? The aim of a man seeking profits on the farm is to produce a salable product. If that is the case he must employ balanced farming methods. In this way does Gorrel Shumaker, specialist for the State College of Agriculture, state the case for better attention of growing crops for market.

He says, "There was a time when all good farmers prided themselves upon the fatness of their family cows. If Bossy's bony structure was not completely concealed with a heavy layer of fat it was thought that she had not been properly treated. Owners of cattle in poor condition were looked upon as being guilty of careless and inhumane treatment. Present-day testing methods prove the fallacy of this old belief. We find that some fat cows may be very poor milk producers. Cows capable of heavy production may become poor producers if not fed a properly balanced ration. One sort of ration may be conducive to the production of flesh, another to the production of milk and butter-fat.

"In like manner a farm, although having every appearance of being fat, may not be profitable. It may be capable of producing fine profits if carefully managed, and yet even bounteous yields of poor quality crops or light yields of very high quality products may leave the owner with a loss at the end of the season. A farm, then, like the cow needs balanced rations. The rations of the farm are the methods employed. Poor seed may be planted in good soil and yield poor results. You may sow good seed in good soil and get an inferior crop if you fail to combat diseases and insect pests. Heavy yields may bring only a small income if the product is not salable.

"Every phase of the farm work has its bearing upon marketing. Seed selection, seed treatment, time and manner of planting, cultural practices, pest control, time and manner of harvesting, and the method of preparing the harvested product for the market—all are essential in the production of a commodity acceptable in the market."

PEPPERS NOW POPULAR IN HOME GARDEN

Raleigh, N. C., March 17.—Every gardener should plant some peppers this year, as they are not only excellent for table use but also furnish a good crop for the market and are becoming more popular as a garden crop each season, says R. F. Payne, Extension Horticulturist for the State College of Agriculture.

Mr. Payne gives the following suggestions as to growing the crop. He says, "Peppers grow best on a deep, well-drained, fertile, sandy loam soil. Applications of barnyard manure give good results. Commercial fertilizer, analyzing 8-4-5 to 8, applied at the rate of 600 to 1200 pounds per acre is recommended.

"The crop is tender to frost, so should be sown in the hot bed about 60 days before time to transplant to the field. These plants need to be transplanted to the cold frame to harden-off and to get a stockier plant.

"After all danger of frost is over, they should be set in the field in rows two to three feet apart and 18 to 20 inches apart in the row. The soil should be thoroughly prepared before setting out the plants. Cultivation should be given frequently to conserve soil moisture and destroy weeds. The first cultivation should be deep and later ones shallow.

The following mild fruited varieties are good: Bill's Nose, Ruby King, Pimiento, Chinese Giant. Of the pungent fruited varieties the Long Red Cayenne and True Red Chili are the best."

N. C. COTTON GROWERS CO-OPERATIVE ASSOCIATION

Raleigh, March 18.—Recently a representative of the Japan Trading Company visited the classing department of the Association at Raleigh. He made some comments concerning the grading and said that the association classing department was giving the farmers everything due them on classification. He was generous enough to say that the staple was good, very good. The cotton examined by this representative at that time was grown in the Goldsboro territory.

It took 54,118 acres of land to produce 27,000 bales of cotton in Union County last year. This year the slogan is "40,000 bales on 40,000 acres" and the people are responding, reports T. J. W. Broom, County Agent.

NOW - OPEN

Maple Shade Meat

Market And Grocery

--- Co., ---

Quality Plus Service

HAPPY STARTING MASH
HAPPY GROWING MASH
HAPPY LAYING MASH

W. J. PACE

"The Happy Feed Store."

**THE HAMLET HOSPITAL
HAMLET N. C.**

DR. WILL D. JAMES
DR. ALBERT W. JAMES

Surgery, X-Ray and Radium

COME HERE FOR PLEATING



ANY STYLE
HEMSTITCHING
BUTTONS
PINKING
CLEANING
PRESSING
DYEING
24 HOURS SERVICE
PERFECT WORK
MODERATE PRICES
NO JOB TOO SMALL
NO WORK TOO LARGE

Hinson - Chisholm

Eat Purity Bread
MADE BY
Purity Bakery, Laurinburg, N. C.