

**CHANGES OF THE YEAR.**

The past year has brought many changes in Pinehurst, which still continues its phenomenal growth. During the summer extensive building operations have been going on, numerous improvements of various kinds have been made, and now, at the commencement of the season, our beautiful little village is in better condition than ever before to provide for the constantly increasing number of Northern guests.

The principal building erected this season is the mammoth Carolina—the largest hotel in the state. This magnificent new hostelry is second to none in its appointments and management, and its popularity is assured. A detailed description of this superb winter home will be found on another page.

The Holly Inn has been thoroughly renovated and improved in many ways since last season, and is now ready for opening in December. This hostelry has every modern convenience, including steam heat, open fires, electric lights, baths, call bell in each room, and is supplied with high pressure water from the Pinehurst Springs. The cuisine is first class, and the waitresses are all white girls from the North. A notable innovation this season is a cold storage room connected with the ice making plant recently installed in the village. Mr. Allen T. Treadway whose management of the Inn last winter was so pleasing to the guests, will remain in charge the coming season. He is expected to return from his summer hotel, the Red Lion Inn at Stockbridge, Mass., the latter part of this month. A large number of rooms have been engaged at the Inn, and the outlook is bright for a most prosperous season.

The Berkshire, which proved so popular last winter under the management of that genial host, Mr. W. B. Peck of the Mt. Everett House, South Egremont, Mass., has been enlarged by an addition of forty-two rooms, which doubles the former capacity of the house. The building at the west end of the house, formerly known as the "Oaks," has been moved back and raised one story higher, and in its place has been erected the large two-story addition. Mr. J. R. Shaw of Carthage was the master builder in charge of the work. The walls and ceilings of all the public rooms have been beautifully decorated, a new cold storage room has been constructed, and numer-

ous other improvements have been made. The house has been thoroughly renovated and refurnished, and will remain under the same management as last season. It is up-to-date in every respect, with steam heat, open fires, electric lights, baths, call bells, and water from the Pinehurst Springs. Many of the rooms have already been engaged, and a prosperous season is assured.

The Casino opened last Wednesday with twenty-six guests. This building has been thoroughly renovated since last season, the steam heating apparatus has been improved, a new cold storage room has been added, and everything has been put in first class condition. It is in charge of Mr. and Mrs. F. H. McAlpine, who are well known to our winter visitors. The new managers have had many years' experience in the hotel business, and their summer hotel, the Lake Winnepeaukee House at Alton Bay, N. H., is a delightful summer home. Under their management the Casino will undoubtedly become more popular than ever. Mr. G. A. Champlin, an experienced hotel clerk,



THE VILLAGE HALL.

part of this space has been used for a cold storage room 12x19 feet with three compartments, connected with the ice making plant. The meat and fish market has been moved up here from the basement and it is intended that this refrigerator shall contain only one day's supply

will manage the store this winter. He has made an enviable reputation for integrity and energy in his home town, and will undoubtedly be successful in his efforts to supply the wants of our villagers.

The Mystic, a fine large cottage containing nineteen rooms, has been erected on the north corner of Magnolia and Chinquapin roads, between Dr. Bradbury's and the Magnolia House. This building is of very attractive design, and has hot and cold water throughout, and baths. It is heated by a system of steam and hot air, and also has open fireplaces. It is a charming winter residence.

The Bowling Alley has a large addition on the north side, which will be used for billiard and pool tables. This innovation will undoubtedly prove popular with our villagers. The bowling alleys have been thoroughly overhauled and everything put in first class condition. William Benson, who was in charge here last season, still remains.

The Golf Links has been enlarged to eighteen holes and more than double its original size. A detailed description of the links will be found on page five.

A fine large livery stable has been erected near the power house. This building has accommodations for twenty-five horses. There are paddocks, a large carriage shed, water and toilets, and an excellent place for washing carriages. Overhead are sleeping quarters for the men, and the whole building is well ventilated. Mr. Frank H. Carpenter of Alton, N. H., who has had many years' experience in the livery business, will have charge of the stables this year, and will undoubtedly conduct them to the satisfaction of our villagers.

The new iron car barn is situated between the power house and machine shop. It contains two tracks and the same number of pits, and will easily shelter all the cars belonging to the electric railroad. Back of the car barn is the coal yard, with a trestle track on which coal cars can be run to dump their loads.

A fifty-foot two-story addition has been erected on the east side of the Pinehurst Steam Laundry. The first floor will be used for laundry work, and contains machinery of the latest pattern. The second story has eight large and conveniently arranged rooms for the use of the employees. The laundry is in charge of competent workmen and our villagers will receive first class service in this line.

Subscribe for THE OUTLOOK now. Six months for 50 cents.



THE DEPARTMENT STORE.

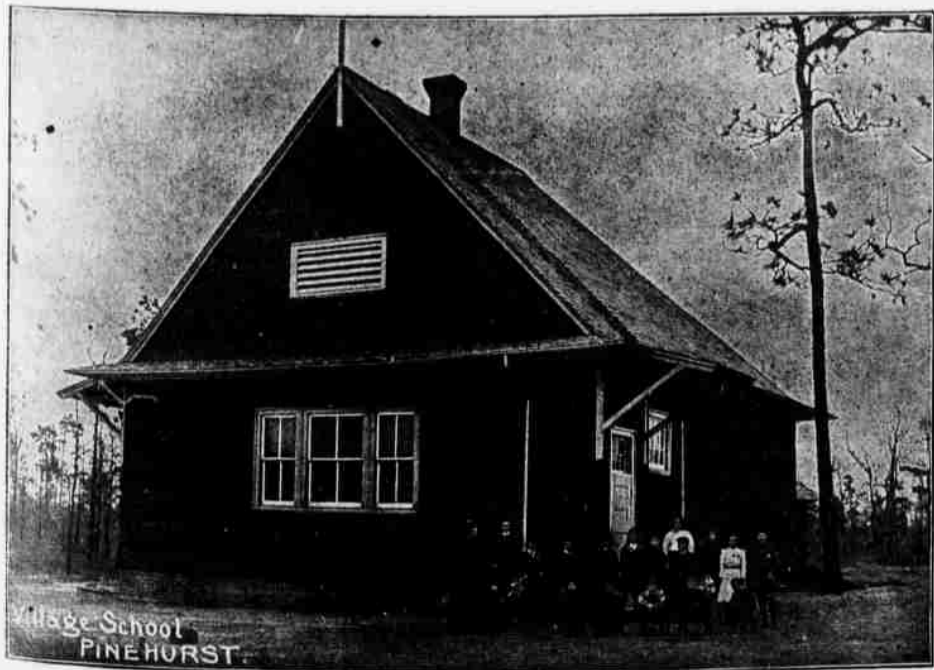
will act as head waiter and see that the guests receive attentive service.

Of the many improvements made in the village during the summer the Department Store has had its share. The grocery department has been enlarged by removing the partition separating it from the store-room in the rear, and a

of perishable articles. In the basement of this building is located the large new cold storage room and ice making plant. In this large room meats, fish and other perishable articles can be kept indefinitely, and a big stock will be kept constantly on hand. This room with the machinery for making ice will occupy about one-half of the basement. Mr. F. H. McAlpine, who managed the meat and fish department last year will continue in charge.

The new post office in the drug store will be a pleasant surprise to our winter guests. The enclosure is made of oak and contains a large number of new boxes. It is being put in place as we go to press, and as it deserves a larger space than we can spare in this issue, we shall defer a description of it until next week. It is undoubtedly the finest post office in the state, and will be in charge of Mrs. H. S. Davis, who will also have charge of the Pinehurst Library and drug store, a position for which she is well fitted.

The store has received a large stock of new goods in all departments, and our villagers will be able to obtain a greater variety and better quality of goods than ever before. Mr. Henry S. Davis of Farmington, N. H., a gentleman of large experience in the general store business,



THE VILLAGE SCHOOLHOUSE.