



To produce the best results in fruit, vegetable or grain, the fertilizer used must contain enough Potash. For particulars see our pamphlets. We send them free.

GERMAN KALI WORKS,  
93 Nassau St., New York.

## The Jefferson

RICHMOND, VA.

In every detail and all its environments an ideal tourist resort.

Finest Golf Links in the South.

### ABERDEEN & ROCKFISH TIME-TABLE.

IN EFFECT NOV. 26, 1900.

No. 8.		No. 9.
Lv 9 15 am	Aberdeen	Ar 4 25 pm
9 30	Leavitts	4 10
9 45	Junction	3 50
9 55	Montrose	3 45
10 25	Timberland	3 30
11 00	Rae ford	3 00
11 25	Dundarrach	2 15
11 30	Arabia	1 50
Ar 12 00 Noon.	Rockfish	Lv 1 30

Endon Branch.—Between Aberdeen and Juniper.

No. 22.		No. 23.
Lv 7 00 am	Aberdeen	Ar 10 00 am
7 15	Leavitts	Lv 9 50
7 25	Junction	Ar 9 10
7 50	Britton	Lv 8 40
Ar 8 00	Juniper	Lv 8 30

Train No. 23 will wait at Junction for No. 8. All trains coming over Bethesda Hill must be under perfect control.

Approved: JOHN BLUE, Pres. C. N. BLUE, Gen. Supt.

### Your Druggist

It is always a convenience to you and often a necessity. Naturally, you wonder if you can get the same prompt, careful and satisfactory drug store service here that you have been used to at home.

### It Is Our Business

To supply such service to just such an exacting demand as yours. We are obliged to carry a larger variety of drug store goods than can be found in many a large city store, because our customers come from every section and represent varied tastes. If we should not have in stock just what you want we shall be glad to order it for you, and we won't keep you waiting, either. We make use of telegraph and express service in every case where it is desirable. Come to see us or write us about your wants. Let us be your druggists.

## Johnson's Pharmacy

Southern Pines, N. C.  
Near the Depot.

### Pinehurst's Easter Services.

Last Sunday being Easter Sunday there were special services in the Village Hall. At 9 a. m. there was a celebration of the holy communion in the small chapel. A large number partook in this service which was conducted by the Rev. Gregory of Southern Pines. The altar was most tastefully decorated with pot plants, pansies, etc., etc.

At 11 o'clock the usual Christian union services took place. The Rev. D. W. Fox of Pinebluff conducted and preached a most thorough Easter sermon to the enjoyment of all present. A very fine musical programme had been prepared and was very well carried out by the large choir and part of the Carolina orchestra under Director Sharp. Mrs. G. F. Freeman sang for the offertory solo, "Repentance," the last composition of Gounod, accompanied by Mr. Gotsch, the cellist of the orchestra. In this her sweet sympathetic voice was heard to great advantage, the quality and character of the piece being specially suited to her. She deserved all the praise that was bestowed on her. She also sang the soprano solo part in "The Day is Past and Over," by V. Roberts, much to the pleasure of all present. The following is the order of service:

Anthem—"The Day of Resurrection" F. H. Brackett

Hymn  
Lord's Prayer  
Hymn  
Responsive Reading  
Hymn  
Scripture Reading  
Anthem—"God Hath Sent His Angels" Wm. A. Fisher

Prayer  
Offertory Solo—"Repentance" with cello obligato Gounod  
MRS. G. F. FREEMAN.

Sermon  
Anthem—"The Day is Past and Over" V. Roberts  
MRS. G. F. FREEMAN.

Hymn  
Benediction

The hall was most beautifully decorated with flowers, plants, Easter lillies, etc., etc, no pains or expense having been spared to make this day memorable in our Pinehurst history. The choral work was fully up to the standard of our modern choirs, all being bound to do their best. Mrs. H. B. Stowe and Mrs. McGregor had charge of the decoration.

As this was Mrs. Freeman's last Sunday here. It is the heartfelt wish of her hosts of friends that the thanks of all our church-going people be tendered to her for her uniform kindness and willingness to assist, often under great disadvantages in the work of the church. Her assistance has been most valuable. She has won the gratitude and good will of all and carries with her the best possible feelings for her success and prosperity in the future.

## Pinehurst Steam Laundry,

Under new management.  
Send us your work.  
Satisfaction guaranteed.

J. P. Sanderson, Manager



## THE Pine Grove House

PINEHURST, N. C.

Will be open November 1st for its third season, under the same management as the two preceeding years.

The effort to make it a home for those who appreciate New England household comforts, it is hoped, will be as successful in securing patronage as in former winters.

I. A. FLINT,

Of the Stone House Farm, North Reading, Mass., (a favorite summer home for city people) will be present at the above date to welcome guests.

TERMS, \$8.00 TO \$12.00 PER WEEK.

## DEPARTMENT STORE, PINEHURST, N. C.

DEPT.  
A Drugs and Proprietary Medicines.  
B Dry Goods and Notions.  
C Gents' Furnishings, Hats and Caps.  
D Boots, Shoes and Rubber Goods.  
E Fancy and Heavy Groceries.  
F Fresh Meats in Cold Storage.  
G Hardware, Stoves and Tin-ware.

DEPT.  
H Crockery and Glass-ware.  
J Furniture.  
K Electric Supplies.  
L Plumbing Supplies.  
M Grain, Hay and Feed Stuffs.  
N Paints, Oils and Varnishes.  
O Silverware, Souvenirs and Toys.

### GROCERIES.

We carry full lines of Fancy and Heavy Groceries.— such brands and assortments as are handled by New England grocers.

### Dry Goods and Shoes.

The Dry Goods and Shoe Departments are complete. Stock bought in Northern Markets. Quality our standard for selection.

### Meat and Fish Market.

Poultry, Game, Fish, Oysters and Meats of all kinds constantly in stock Western Meats handled in cold storage.

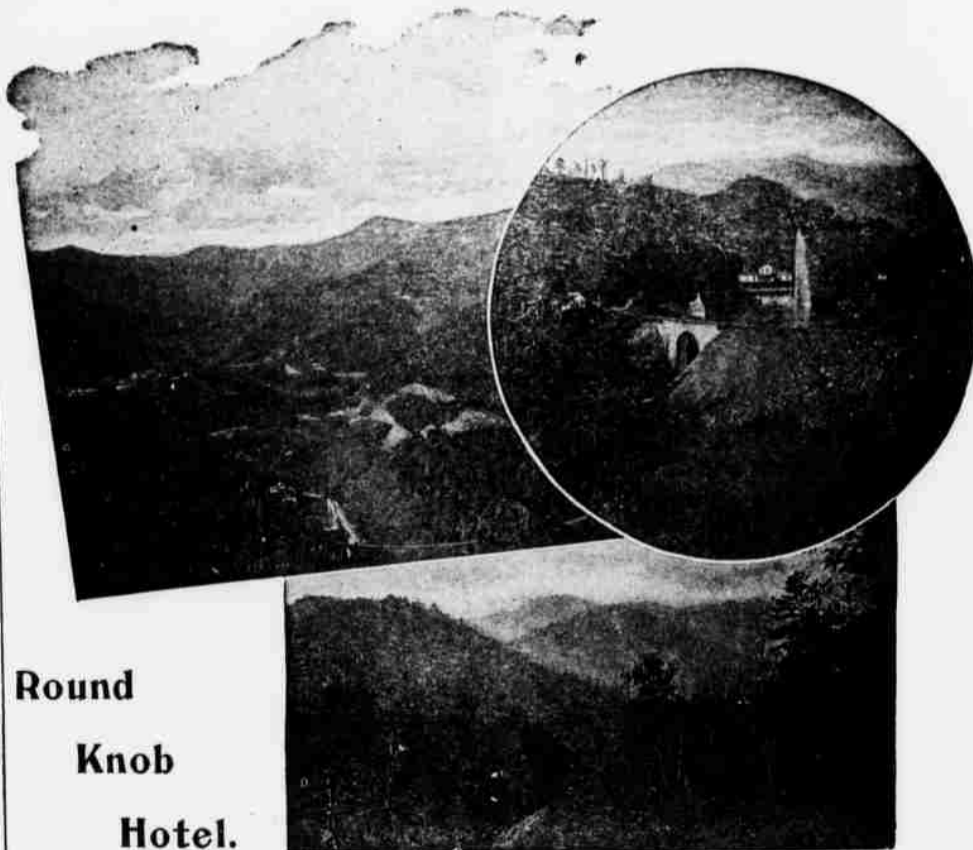
### Hats, Caps and Gents' Furnishings.

The latest styles of Hats, Caps and Gents' Furnishings carried in stock

### Stationery.

A full line of Stationery, both printed and plain, will be found in this department.

HENRY S. DAVIS, Manager and Buyer.



## Round Knob Hotel.

C. D. BENBOW, Greensboro, N. C., and J. M. ROBINSON, Pinehurst, N. C., Proprietors.

OPEN JUNE 1ST TO OCTOBER 15TH.

Consumptives not admitted.