

DAIRY BUILDING COMPLETED

Important Addition to Pinehurst Dairy Farm During Summer.

Department Better Prepared than Ever Before to Meet the Important Demands.



THE completion of the new Dairy building at the Dairy Farm, is important work carried forward in connection with this department during the summer, and the plant will be complete and in use by the first of the year. Here milk and cream will be cared for and

and modern in every particular. The structure is large, light and airy, with innumerable windows to let in the sunshine and four dormer windows for ventilation. The floors and wainscoting of the interior are of concrete with hospital or rounded joints which may be easily cleaned. The platforms on which the cattle stand are graded to fit the animals, and a trough at the rear connects with a cesspool, carrying off all liquids. There are swinging iron stanchions with automatic watering arrangements, which keep an abundant supply of fresh water before the cattle at all times. There are four box stalls in each barn, and provision is made for 100 head.

The cattle and stable are looked after with scrupulous care. The animals are groomed twice a day, and the stable is washed by douching of water every morning. The cows are all tuberculin tested twice each year, and great care

POULTRY FARM POPULAR

An Important Department which Attracts Many Visitors.

Fine Food Supply Stock is First Consideration, but There are Also Prize Winners.



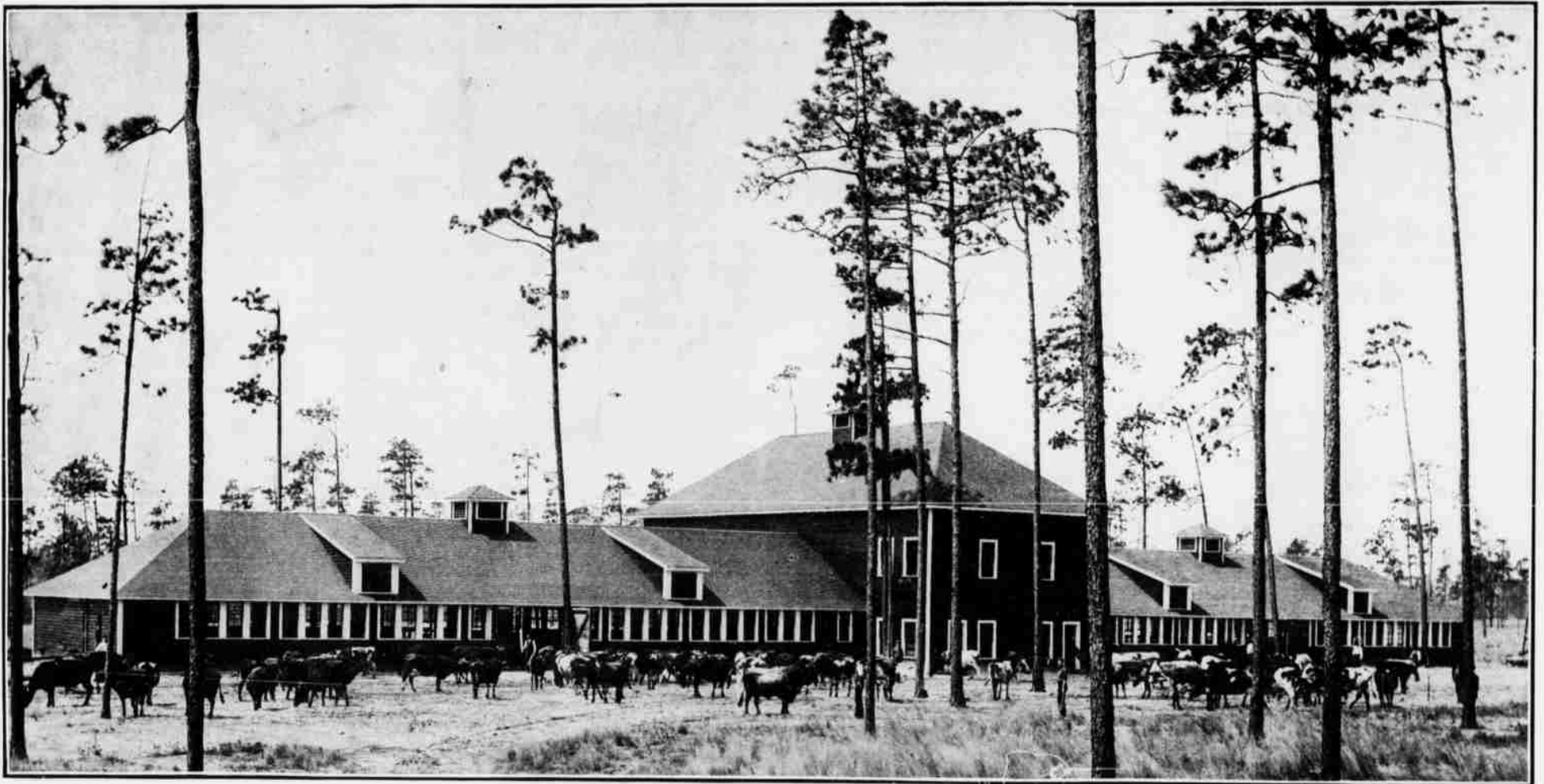
SUCCESSFUL is the word which best describes the work of the Pinehurst Poultry Farm since it was started two years ago, and constant enlargement has been necessary to keep it abreast with its growth each year. The plant now covers a large area of ground,

ribbon" at the best shows of the country.

The breeding of fancy poultry was begun last year and will be carried on in connection with the raising of fine food supply stock and some exceptionally valuable specimens of various varieties will be found here.

A special feature at the farm which at once attracts attention, is a large number of "colony houses" and yards which are spread out over a large area, and are not shown in the accompanying illustration. Here different varieties of breeding stock are kept under the best possible conditions for health and vigor. Then again, there are the yards for ducks, turkeys and geese, quail and pheasants.

The most popular thing at the farm, however, is the incubators where hundreds of eggs of many sorts may be seen in almost every state of incubation. Eggs showing the chick from its first growth toward life until its final stepping forth



THE MAIN BUILDINGS OF THE DAIRY FARM.

prepared for sending out with scrupulous care and during the summer season, butter will be made from surplus milk.

The results of the farming carried on during the past summer, show a marked advance over last year. The soil shows a decided improvement as the result of previous cultivating and some 500 tons of ensilage and 300 tons of cow pea hay have been raised and stored for use.

The Dairy Farm is without question, the most important of the various "utility plants" maintained in connection with the Village, and it appeals to all not only as an interesting place to visit, but mainly from the standpoint of health, for pure milk, cream and butter are necessities, delicacies and luxuries combined.

The department has achieved satisfactory results from the first, and the daily output is about 250 gallons of milk.

The equipment embraces, besides the dairy proper, a main or storage building, 36x80, with two wings 36x115 feet deep,

is taken as regards the care of the milk and the cleanliness of the retainers.

The present herd consists of some ninety graded, Ayshire, Durham and Holstein milch cows, headed by a registered Jersey bull "General Marigold," No. 45486, from the Biltmore Farm at Asheville. This animal represents the finest strains of Jersey milk and butter producers in the country.

In connection with the farm are 150 acres of land which are used for the raising of food for the cattle, and a piggery where blooded Berkshire hogs are raised on waste products of the dairy.

Visitors are always welcome, and one might add "numerous."



The Village Market.

The Village Market will again be under the management of Armour & Company, and prepared to meet the demands of the cottagers in every particular.

and is not only one of the most important of food supply departments of the Village but a source of never-ending attraction for the Village guests.

This farm is not only the largest in the South but it is also the only one maintained in the same way and upon the same scale, for the sole purpose of supplying the needs of a winter resort. The buildings, yards and colony houses are extensive and everything is thoroughly modern with an air of cleanliness, airiness and sunlight which is in keeping with everything else in the Village.

The first consideration is of course, the production of broilers, roasters and capons, "plump juicy and toothsome," for the various needs of the Village, but at the same time, the poultry is being bred in accordance with American standards of perfection, and the fancier will be delighted with a critical examination, and will find many birds which would easily be winners of the "blue

into the world, are also shown the guests who may examine them by aid of a powerful light.

The incubators are kept busy day and night and as fast as one set of eggs hatch another is started, and "birthday parties" at the farm are duly announced and attended by many of the Village guests, who are always welcome.

The farm is but a short distance from the Village, and may be reached either by the road which passes through the lodge gate near The Carolina, or the road which passes the Livery Stable at the right and the Kennels at the rear.



Miss Walker Will Return.

Miss Laura Agnes Walker, manicurist and masseuse at The Carolina, will return for the season; an announcement which will be welcomed by her many patrons.