

THE SCORES WERE CLOSE

Department Store and Village Teams Bowl Good Match.

First Event in Series of Matches Begun at Bowling Alley on Wednesday Evening.



THE first of a series of bowling matches between local teams, took place at the Bowling Alley Wednesday evening, when teams representing the Department Store and the Holly Inn faced each other.

The laurel wreath went to the Department Store with a score of 1,669 to 1,556, a margin of 113 points; but the end is not yet. J. Milton Robinson, of the Department Store team, made the highest individual score of the evening, three strings of 119, 150 and 159, a total of 428.

THE SCORES.

The scores in detail were as follows:

DEPARTMENT STORE.

Ward	80	75	84	239
Milham	81	81	90	252
Stillings	139	133	88	360
Ellis	137	134	119	390
Robinson	119	150	159	428
				1,669

HOLLY INN.

Turner	102	112	119	333
King	57	78	88	223
Dodd	75	68	101	244
Ruggles	120	127	105	352
Yeager	120	142	142	404
				1,556

OPPOSITION GOLF COURSE.

Masters Tufts and Ashby Establish Private Links.

Pinehurst has its third golf course, entirely private in its character and exceedingly exclusive and limited in its membership. At present the active members include Master Richard Tufts and Corydon Ashby, with little Miss Esther Tufts on the honorary list. It is not the purpose of the promoters to make an active effort to increase the membership, but they would consider applications of the right character.

"The course" says Master Ashby, starts back of Richard's house, and runs through the woods up towards The Carolina. At present we've only got 'leven holes, but there's room enough for eighteen and some dandy hazards, one of which I guess it would take as much as a hundred strokes to get out of if you ever got in.

"Then there are some pretty good bunkers, but best of all the whole thing is all our own, and we laid it out all by ourselves."

CHRISTMAS TREE PLANS.

Committee Has Arrangements Completed—The Program.

The Christmas Tree Committee has been very successful with its work and plans are all well in hand. There will be Christmas trees for the children of the Village, the children in the vicinity of the Village, and the colored children in the Village and nearby, Monday evening at 7:30, Tuesday afternoon at 2:30, and Tuesday evening at 7:30, respectively.

Appropriate programs have been arranged for each tree and Principal Taylor of the colored school, has prepared a special program in which his pupils will participate, to be given in connection with the tree for colored children.

Two hundred dollars had been raised for the fund up to Thursday noon, from which amount about \$150.00 had been expended. After all purchases have been made the balance will be devoted to tree decorations and necessary expenses. Additional contributions may be sent to Rev. J. B. Seabury as late as Tuesday noon.

The annual Christmas box containing toys, candy and clothing has been received from Rev. Mr. Dickinson, founder of the colored school.

Some three hundred and seventy-five are provided for including a few adults of advanced age, but principally the white and colored children residing in the Village and the vicinity.

A list of those who have contributed to the fund will be published in the next week's OUTLOOK.

At The Magnolia.

The number of guests at The Magnolia is steadily increasing.

Among the arrivals are Mr. Charles L. Rogers and Mr. Clarence Rogers, of Lakehurst, N. J., who come for the season.

Mrs. L. Adams and Miss Adams, of Philadelphia, will make a long sojourn.

Mrs. L. M. Lewis and the Misses Lewis, of New Bedford, Mass., are here for a few weeks.

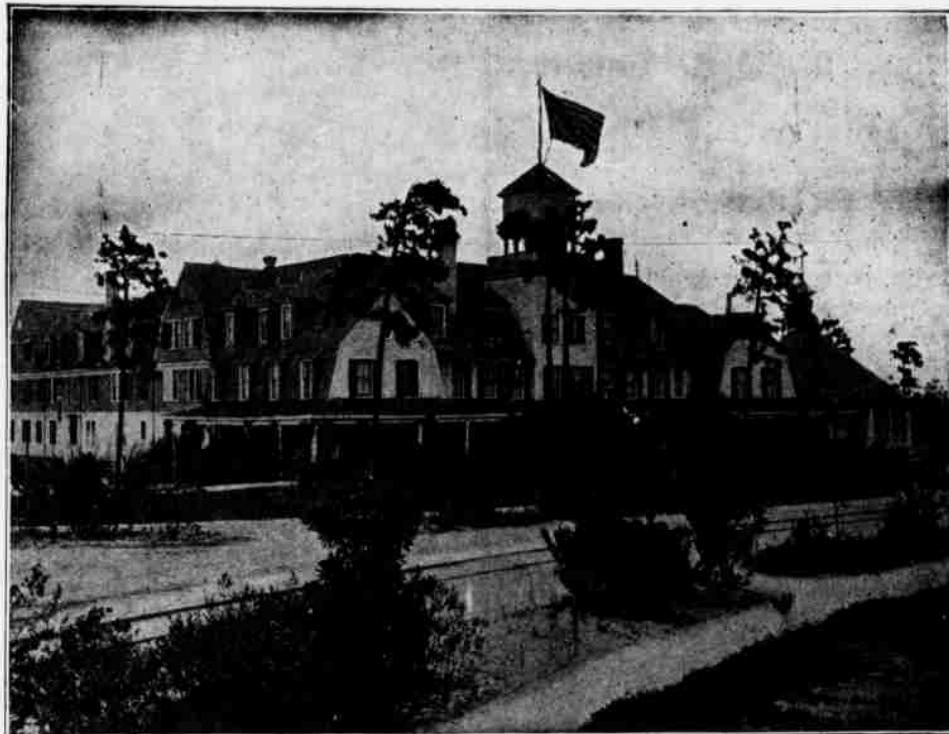


His Opportunity.

A girl under the mistletoe is worth two in the conservatory.—Smart Set.

THE HOLLY INN

PINEHURST, N. C.



The Holly Inn is one of the most attractive hotels in the South. Since it was built in 1895, it has been necessary to enlarge it several times to meet the constantly increasing demand. The interior is elegant, cheerful and tasteful. No modern convenience is lacking. There are bath rooms, electric lights, steam heat and open fireplaces. There is a call bell in every room, and all beds are furnished with best hair mattresses. An orchestra furnishes fine concerts daily, and also provides for dancing. The cuisine is unsurpassed. The waitresses are all white girls from the North. Rooms for billiards and other games are provided in the hotel.

A. I. CREAMER, Manager.



The Harvard,

PINEHURST, N. C.

This recently completed hotel is centrally located between The Carolina and The Holly Inn.

It is modern in every respect, having electric lights, steam heat and several suites with bath and with its cottage annex and large dining room accommodates seventy-five guests.

The Cuisine is in charge of a competent chef, and the table service is guaranteed satisfactory.

F. H. ABBOTT, Manager.

THE UPLANDS

BETHLEHEM, N. H.

F. H. ABBOTT, Proprietor.

Address until May 1st, PINEHURST, N. C.

THE MT. KINEO HOUSE,

KINEO, Moosehead Lake, MAINE.

Nature's Ideal Summer Wilderness, Lake and Mountain Resort for Climate, Scenery and Location.

Send for Booklets

C. A. JUDKINS, Manager.

Pinehurst Casino Cafe

Provides excellent New England cooking and table board at a moderate price.

F. H. ABBOTT, Manager.