



S. S. PIERCE CO.,

ESTABLISHED 1831. **IMPORTERS AND GROCERS** INCORPORATED 1894

Fremont and Beacon Sts. **BOSTON.** Coolidge's Corner, BROOKLINE.
Copley Square.
185 Milk St., (Wholesale)

YARBOROUGH HOUSE,

RALEIGH, N. C.

A STRICTLY HIGH CLASS HOSTELRY SITUATED ON THE SEABOARD AIR LINE RAILWAY, THOROUGHFARE BETWEEN NEW YORK AND FLORIDA, AND WITHIN ONE HOUR OF PINEHURST, N. C.

RALEIGH IS A CITY OF HOSPITABLE PEOPLE, PRETTY HOMES, DELIGHTFUL CLIMATE, FINE MACADAMIZED ROADS, INSTRUCTING MUSEUMS NUMEROUS STATE INSTITUTIONS, AND MUCH HISTORIC INTEREST.

WRITE FOR ILLUSTRATED BOOKLET.

HOWELL COBB.

Pinehurst Department Store.

We carry a full line of Fancy and Heavy

== GROCERIES ==

Such brands as are handled by New England Grocers.

The Dry Goods and Shoe Departments are complete. Stock bought in Northern Markets. Quality Standard for selection. Full line of Columbia, Saxony Floss and Germantown Yarns.

A Complete Assortment of Finest Ribbons and Embroidery Silks.

The Latest Styles of Stationery, both Printed and Plain.

GENERAL SUPPLY OF

FIELD AND TRAP SMOKLESS AMMUNITION.

Prices on par with New England Markets.

HOLLY INN TEAM WINS MATCH

Defeats Department Store in Third Contest of Winter.

Total Scores Were But Eighty-one Points Apart—J. Milton Robinson John Yaeger do Good Work.



THE Department Store Bowling Team suffered the second defeat of the season in Tuesday evening's match, losing by eighty-one points and a score of 1,703 to 1,784. J. Milton Robinson, of the Department Store team, made the highest individual score of the evening, strings of 127, 146 and 184, a total of 457, his nearest opponent being John Yaeger, of The Inn team, who scored a total of 406: 123, 141 and 142.

TOURNAMENTS THE FEATURE.

Tin Whistles Announce Full Program of Fixtures for the Winter.

The Tin Whistles are planning a busy winter in which golf tournaments of a varied nature will be a special feature, and numerous smokers, cotillions and other social events, as pleasing diversions.

The full season's tournament program is as follows:

Wednesday, January 18—Eighteen hole handicap, medal play, prizes for two best net scores.

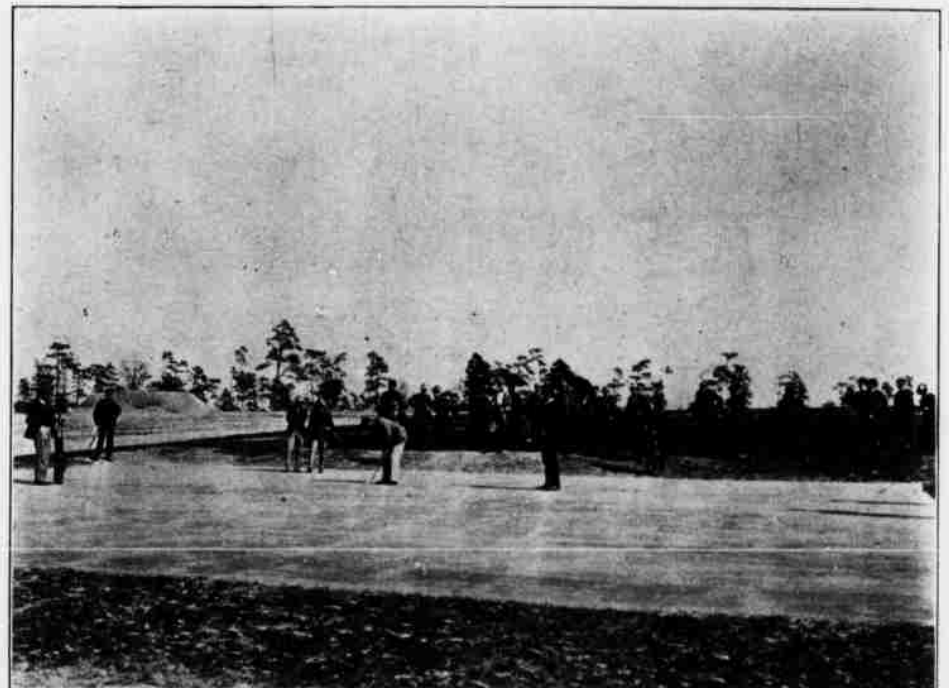
Wednesday, January 25—Eighteen hole handicap, match play, prizes for winner and runner-up.

Wednesday, February 8—Eighteen hole handicap for mixed foursomes, medal play, prizes for winning pair.

Wednesday, February 22—Club Championship, match play, scratch, Eighteen hole qualifying round in the morning, medal play, best sixteen to qualify: prizes to winner and runner-up.

Wednesday, March 8—Men's four ball four-some handicap; medal play, best ball. Prizes to winning pair.

Monday, March 20—Thirty-six hole handicap, medal play, prizes for two best net scores.



A PUTT FOR THE HOLE AND MATCH.

THE SCORES.

HOLLY INN.

Turner	130	84	115	329
Mulcahey	103	102	113	318
Dodd	118	111	112	341
Ruggles	127	151	112	390
Yaeger	123	141	142	406

1,784

DEPARTMENT STORE.

Milham	69	90	115	274
Austin	112	91	98	301
Stillings	122	115	103	340
Ellis	135	104	92	331
Robinson	127	146	184	457

1,703

Saturday's Golf Tea.

The rare beauty of the day made the usual Saturday afternoon tea at the Golf Club House particularly delightful, and the building was thronged during the entire afternoon.

Holy Communion Sunday.

Holy Communion will be celebrated by Rev. Henry T. Gregory, of Southern Pines, in the Village Hall Sunday morning at ten o'clock.

On Wednesday, February 1, February 15, March 1 and March 15—Special tournaments for cups offered by Mr. T. B. Cotter, Mr. H. W. Priest, Mr. A. I. Creamer and THE PINEHURST OUTLOOK. Ball sweepstakes, will also be held in connection with these events.

The Club will also offer two prizes for the two best average net scores among the members; the average to be taken from all scores made by members in Tin Whistle tournaments, and play in at least four such tournaments required to entitle a member to compete.

The dates of the social events will be announced later.

Mr. and Mrs. Hervey Assist.

The vocal and pianoforte solos of Mr. and Mrs. W. E. Hervey, of Far Rockaway, given in connection with the regular concert at The Holly Inn last Sunday evening, were much enjoyed. Mrs. Hervey plays with wonderful delicacy and skill, and her husband has a tenor voice of much richness and wide range.

Sunday Services.

Sunday services will be held regularly in The Village Hall Sunday morning; Episcopal services at ten and Union at eleven-fifteen.