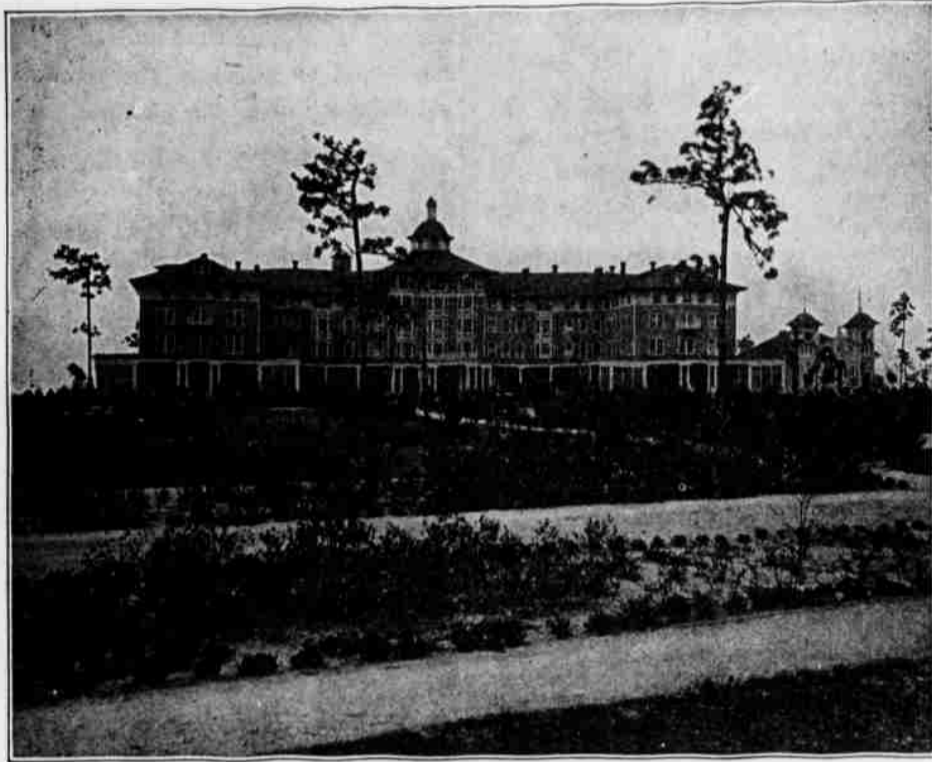


THE CAROLINA

PINEHURST, N. C.



The Carolina is a magnificent four-story building completed in 1900. The interior is a model of elegance, with appointments calculated to suit the most luxurious tastes. The hotel accommodates four hundred guests and is provided with fifty-four suites with bath. The cuisine and table service are unsurpassed.

The house contains every modern comfort and convenience, including elevator, telephone in every room, sun rooms, steam heat night and day, electric lights, and water from the celebrated Pinehurst Springs, and a perfect sanitary system of sewage and plumbing.

H. W. PRIEST, Manager.



The Berkshire,

PINEHURST, N. C.

The Berkshire is a modern hotel, delightfully located with all conveniences for health and comfort; running water from the celebrated Pinehurst Springs, bath rooms, steam heat, open fires and electric lights and sanitary plumbing. The guests apartments are comfortable and home-like and the public rooms large and attractive. The cuisine and service is of a high standard.

J. A. SHERRARD, Manager.

PINEY WOODS INN,

SOUTHERN PINES, N. C.

A modern hotel, home-like in every respect. Luxuriously furnished appealing to all who desire home comforts at moderate rates.

Rooms en suite with private baths. Sanitary conditions perfect. No consumptives received.

The Water used at Piney Woods Inn is from the Celebrated Crystal Springs—absolutely free from all sediment—the finest table water to be had.

RATES ON APPLICATION.

LEON ST. JOHN, - MANAGER.

6 1-2 Per Cent Investment,

A manufacturing company on the main line of S. A. L. Ry., in successful operation seven years wishes to dispose of an issue of bonds on basis of 6 1-2 per cent.

For particulars address:

Box 502, Raleigh, N. C.

THE HEAVENS IN JANUARY

With Midwinter's Coming the Sky is Steadily Growing More Brilliant.

Whole Eastern Sky is Now Filled With Bright Groups of Stars—Interesting Detailed Information.



HE wonderful clearness of the atmosphere in this section makes the stars seem much nearer and brighter than elsewhere. Visitors here are as much impressed with the beauty of night as they are with the glory of the sunshine, and they will be interested to know what stars may be found in the Heavens during January.

SKY GROWING BRIGHTER.

As midwinter approaches the evening sky is growing continually more and more brilliant. The large, faint, autumn constellations have been gradually draw-

Dog, a rather faint group of stars on the whole, but one which contains the brightest of all the stars in the entire heavens—the splendid Dog Star Sirius. Near the ground below Orion are two compact little groups, known as Lepus, the Hare, and Columbia, the Dove, while to the west is the long straggling constellation known as Eridanus, or the River.

THE WINTER STARS.

In the eastern and southeastern sky the observer will notice a number of very brilliant stars. If he will count the most striking of these he will find that altogether there are nine which far outshine the other stars of the heavens. Even to the naked eye these stars differ greatly in brilliancy and color; to an astronomer each has its own individuality, each differing from the others in its constitution, size, heat and physical condition.

All of these bright stars are suns, greatly larger, hotter and brighter than our own sun, and enormously far away.

THE PLANETS.

Venus will immediately attract attention in the southwest. Each evening it



"THIS IS MY HODOO HOLE"—TRAVIS.

ing nearer to the sun, and, therefore, sinking from view in the West, while to take their place the bright constellations of winter appeared one after another in the East, and have each evening mounted up higher and higher in the sky. This has gone on now until the whole Eastern half of the heavens is filled with bright groups of stars. But the Western half is far fainter, for the autumn constellations, though low down in the West, still linger with us. Soon they will pass behind the sun, to be lost to our view for another year.

THE CONSTELLATIONS.

If the observer will face to the South, he will see almost exactly overhead the very bright, whitish star, Capella, while below this, to the south, is the beautiful constellation Taurus, with the Pleiades and Hyades, which has now reached its highest position in the sky, and is very favorably situated for observation. Below Taurus, and still due south, is the magnificent constellation Arion, while in the southeast is Canis Major, the Greater

is found a little higher in the sky than the evening before, and its brightness is rapidly increasing as it draws near the earth. The crescent moon will pass the planet on the evening of January 9 at 10 o'clock, Eastern time.

Mars is slowly drawing into more favorable position, but it cannot yet be well observed until several hours after midnight.

Jupiter is in the constellation of the Fishes and is still in excellent position for observation in the early evening. It shares with Venus the distinction of being the brightest object in the western heavens.

Neptune is also in excellent position for observation with a small telescope, but Saturn and the other planets have drawn so near the sun that observation on them at present is impossible.

Mr. and Mrs. Hervey Sing.

A vocal duet by Mr. and Mrs. W. E. Hervey, of Far Rockaway, N. Y., at the Union Service Sunday morning, was much enjoyed.