



S. S. PIERCE CO.,

ESTABLISHED 1831. **IMPORTERS AND GROCERS** INCORPORATED 1894

Tremont and Beacon Sts.
Copley Square.
165 Milk St., (Wholesale)

BOSTON.

Coolidge's Corner,
BROOKLINE.

YARBOROUGH HOUSE,

RALEIGH, N. C.

A STRICTLY HIGH CLASS HOSTELRY SITUATED ON THE SEABOARD AIR LINE RAILWAY, THOROUGHFARE BETWEEN NEW YORK AND FLORIDA, AND WITHIN ONE HOUR OF PINEHURST, N. C.

RALEIGH IS A CITY OF HOSPITABLE PEOPLE, PRETTY HOMES, DELIGHTFUL CLIMATE, FINE MACADAMIZED ROADS, INSTRUCTING MUSEUMS NUMEROUS STATE INSTITUTIONS, AND MUCH HISTORIC INTEREST.

WRITE FOR ILLUSTRATED BOOKLET.

HOWELL COBB.

Pinehurst Department Store.

We carry a full line of Fancy and Heavy

== GROCERIES ==

Such brands as are handled by New England Grocers.

The Dry Goods and Shoe Departments are complete. Stock bought in Northern Markets. Quality Standard for selection. Full line of Columbia, Saxony Floss and Germantown Yarns.

A Complete Assortment of Finest Ribbons and Embroidery Silks.

The Latest Styles of Stationery, both Printed and Plain.

GENERAL SUPPLY OF

FIELD AND TRAP SMOKLESS AMMUNITION.

Prices on par with New England Markets.

HARRY VARDONS VISIT HERE

**Announcement of Book From His Pen
Recalls Important Event.**

Made Rounds of 71 and 75 in Thirty-six Hole Match With Dutton and Baldwin.



THE English announcement of the publication of "The Complete Golfer," from the pen of Harry Vardon, will recall to many readers of THE OUTLOOK the visit of this famous player to Pinehurst in March 1900. Vardon came here during his American tour and during his stay played over the course several times, his most important matches being two thirty-six hole best ball contests, one between Professionals John D. Tucker and Lloyd B. Hallock and the other with amateurs George C. Dutton and Lathorp E. Baldwin. In the amateur match, he made his best

leaving he expressed his views in the following letter to the late James W. Tufts, through whose interest in golf, the Britisher's visit was brought about:

"I want to thank you very much indeed for all the kindness which you extended to me during my stay at Pinehurst. I have enjoyed playing over your course immensely. It is very sporty; no two holes being alike; the distances are excellent, and the hazards well placed. By next season, when the new ground becomes thoroughly hardened and the present growth of turf more firmly set, you will have eighteen holes which it will be a great pleasure for any golfer to play over, and in my judgement, which will compare very favorably with any of the eastern courses.

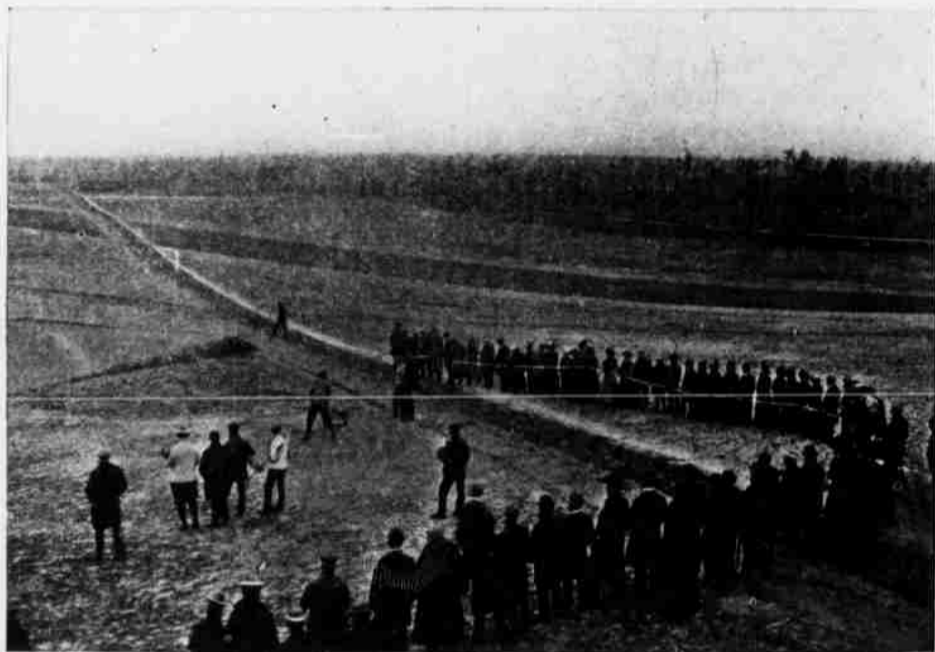
"Again thanking you, believe me,

Truly yours,

HARRY VARDON."

Intellectual Detective Stories.

A detective story is always sure of a welcome, and, perhaps, that is why the series of "Diplomatic Mysteries," by Vance Thompson, which is to be published by J. B. Lippincott Company, has had such an excellent advance sale this month. Each one of these series represents a piece of intellectual detective work of unusual difficulty.



VARDON DRIVING FROM THE FIRST TEE, MARCH 9TH, 1900.

rounds 71 and 75, or a total of 146. The cards:

| MORNING. | |
|------------|--------------------------|
| Out-4 | 3 3 5 3 4 4 3 4-33 |
| In -4 | 4 4 4 5 5 5 3 4-38-33-71 |
| AFTERNOON. | |
| Out-3 | 4 3 4 3 5 4 3 4-33 |
| In -5 | 3 5 5 6 4 5 3 6-42-33-75 |
| | 71 |
| | 146 |

These cards, were at that time, considered fully as remarkable as the more recent records made by Travis, 69-71-140; Donald Ross, 72-74-146; and Lard, 72-76-148, and they still stand as representing the very best golf ever played here. To be sure the course has since been considerably lengthened and made more difficult, but it must be remembered that when Vardon played here the fair green was not in its present perfect condition, and the soft rubber ball was unknown.

Vardon was delighted with Pinehurst and the course and his prophesies for a brilliant future for the place, have been brought to a speedy fulfillment. In

SUNDAY'S CONCERT.

Solos by Miss Watson and Mrs. Sharp are Features of Program.

The Sunday evening concert at The Holly Inn was much enjoyed by a company which included guests from the hotels and cottages. The solos of Miss Alyce Watson, pianist and Mrs. Trev. Sharp, 'cellist, were particularly enjoyed. The full program was as follows:

| | | |
|--------------------------------------|-------------------------------------|--------------|
| March from | "Suite Poetique" | Bloch |
| Overture | "Martha" | Flotow |
| Piano Solo | { a "Rustles of Spring" | Sinding |
| | b "The Flatterer" | Chaminade |
| | c "The Spinning Girl" | Raff |
| | (Miss Watson) | |
| Selection Scenes from | "Carmen" | Bizet |
| Romanza | "Roses Softly Blooming" | Spohr |
| Entr'acte de | "Rosemunde" | Schubert |
| Cello Solo, Cantalena & Allegro from | "Concerto" | (Mrs. Sharp) |
| "Bolero" | | Mozzkowski |
| Hymn | "God be With You" | Tomer |
| | (Guest will Please Join in Singing) | |