



When visiting New York on the return journey stop at

### The Hotel Woodward

Broadway and 55th Street

A few days spent in New York will prove a pleasant termination to the winter's travels. The select and exclusive character of the patronage of the Hotel Woodward, its refined environment and easy reach of the shops, theatres and railroad stations, make it an ideal place from which to enjoy the many pleasures of a short sojourn or permanent residence.

A modern fire-proof building, admirably equipped and furnished. The cuisine and service exemplify the best achievements in the culinary arts.

**T. D. GREEN, - - - Manager**

Also Hotel Edgemere, Edgemere, Long Island.

### THE BALMY BREEZES OF THE SUNNY SOUTH

Are laden with Health and Happiness for the Worn-out Wrestler with the Strenuous Life.

But you cannot repair wasted tissue or restore strength to jangled nerves with air and sunshine alone.

The stomach calls for a food that supplies body-building material in its most digestible form. Such a food is

#### Shredded Whole Wheat.

It is made of the whole wheat, cleaned, cooked and drawn into fine porous shreds and baked. These delicate shreds contain all the nutritive elements of the whole wheat grain and are taken up and assimilated when the stomach rejects all other foods.

**Shredded Wheat is made in two forms--BISCUIT and TRISCUIT. The BISCUIT is delicious for breakfast with hot or cold milk or cream, or for any meal in combination with fruit or vegetables. TRISCUIT is the shredded whole wheat cracker, crisp, nourishing and appetizing. Delicious as a toast with beverages or with cheese or preserves.**

"It's All in the Shreds."

**THE NATURAL FOOD COMPANY**

Niagara Falls, N. Y.



### Ebbitt House

Army and Navy Headquarters  
WASHINGTON, D. C.

American Plan, Rates \$3, \$3.50 and \$4 per day.  
Rooms with Baths, \$5. Parlors extra.  
Special Rates to the Clergy.

**H. C. BURCH, Proprietor.**

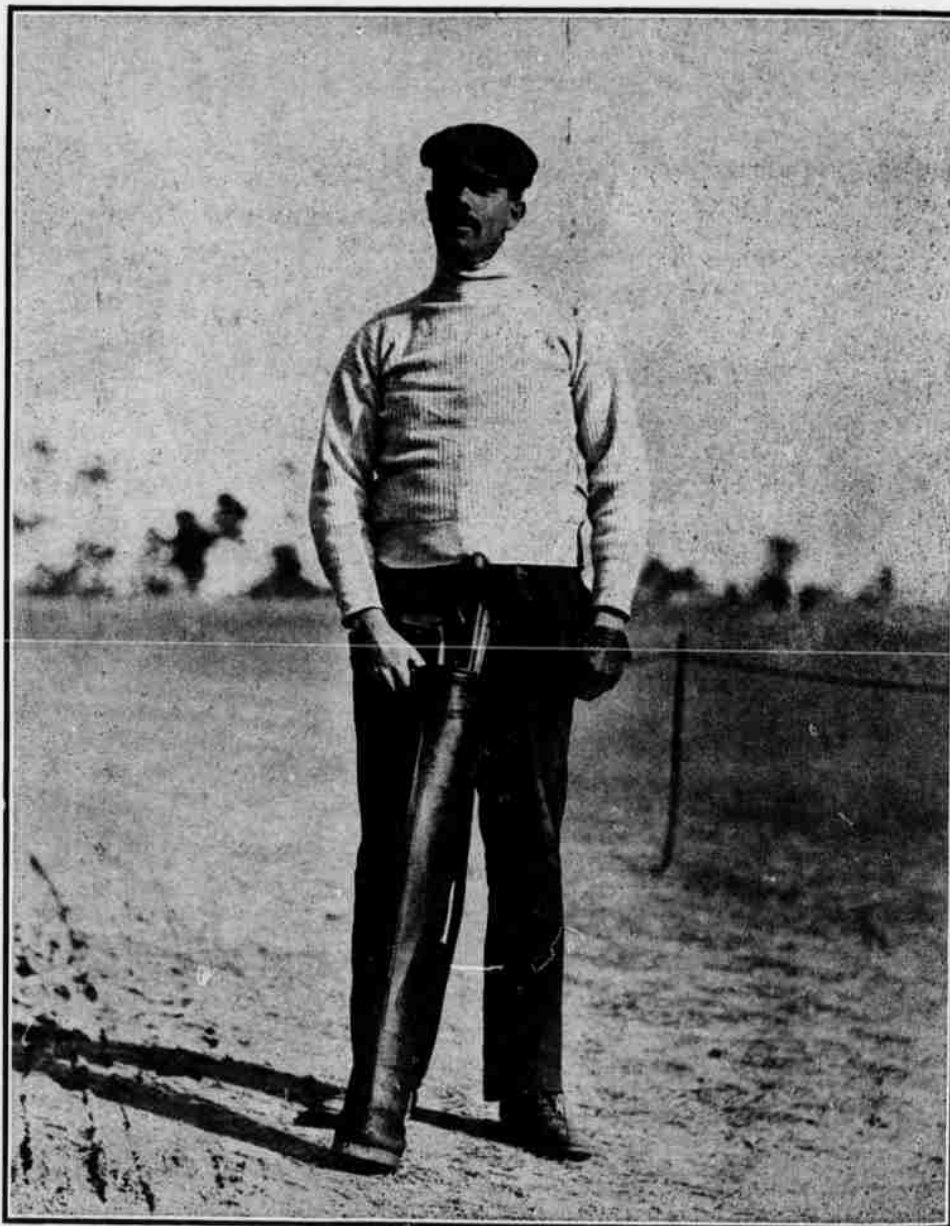
## THE SPRING TOURNAMENT

**S**ATURDAY'S thirty-six hole final rounds in the third annual Spring tournament, brought to a close an event of exceptional interest throughout. Never has a field here been more evenly matched and keen play, and close matches were the rule rather than the exception, half a dozen cards being turned in daily, which were eighty and better.

Interest in the closing day's play centered in the match between J. D. Foot of Apawamis, and C. L. Becker of Woodland, for the first division or President's trophy, Mr. Foot winning, 3 up and 1 to play, on the seventeenth green.

Pierce of Woodland, was going very fast disposing of Allan Lard of Columbia, by the liberal margin of 9 up and 8 to play. Mr. Pierce was six up at noon, with a seventy-six card, and he made the turn on the afternoon round in thirty-six, four under Bogey, making recovery of lost ground by his opponent absolutely out of the question.

J. D. Climo of the Euclid Club, Cleveland, took the second division, and M. H. Redpath of the Royal Club, Montreal, the consolation; E. M. Barnes of Englewood, the third, and Frank Presbrey of Garden City, the consolation; G. W. Daw of the Island Club, Troy, the fourth, and M. B. Johnson of Euclid, the consolation.



C. L. BECKER, RUNNER-UP IN SPRING TOURNEY.

The match was stroke for stroke from start to finish, at noon the score being even up, with medal play cards of eighty and eighty-one. Mr. Foot had a little the best of it, however, on the afternoon round, being two up at the turn, and increasing this lead to three at the thirty-second. Mr. Becker, however, rallied, taking the thirty-third, halving the thirty-fourth, but losing the thirty-fifth and the match, 4-3. The players finished out the round with medal play cards of seventy-nine and eighty-two, or a total for the thirty-six holes, of one hundred and fifty-nine for Mr. Foot and one hundred and sixty-three for Mr. Becker.

In the first division consolation L. D.

The full story of the week's play is told in the following summaries:

#### THE SCORES: FIRST DIVISION.

	Out.	In.	Gr.
L. D. Pierce,	40	37	77
C. L. Becker,	41	39	80
C. B. Fownes, Jr.,	38	43	81
Allan Lard, Columbia,	38	44	82
L. E. Wardwell,	42	41	83
J. D. Foot,	46	37	83
H. C. Aborn,	41	45	86
R. E. Wilsey,	44	42	86
C. H. Schoff,	43	43	86
W. L. Maltby,	43	44	87
A. P. Thompson,	42	45	87
E. B. Humphreys,	46	41	87
W. C. Fownes,	47	41	88
J. O. H. Denny,	40	48	88
H. C. Fownes,	47	42	89