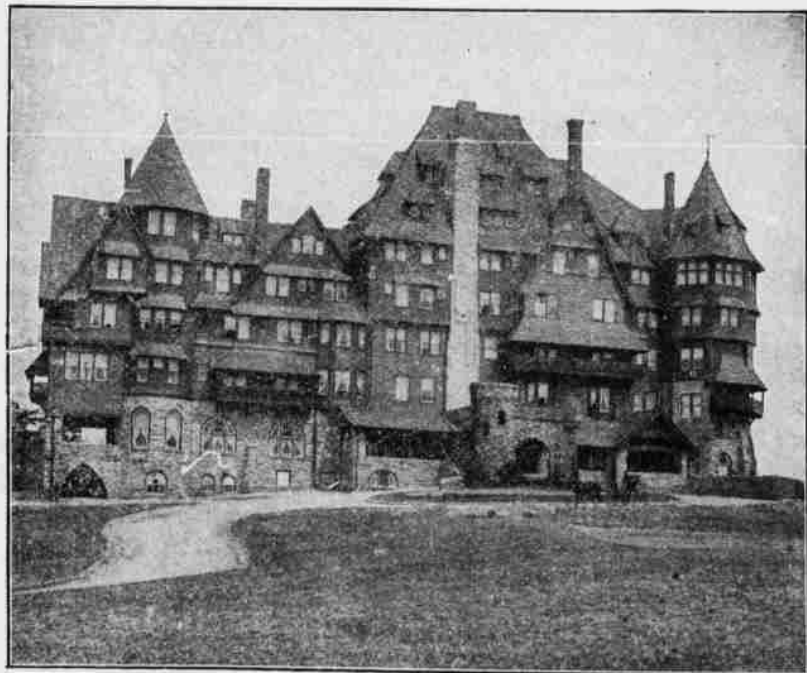


The Shoreham, Washington, D. C.

AMERICAN AND EUROPEAN PLAN.
Absolutely Fireproof

Located in the most fashionable part of the city and within five minutes walk of the Executive Mansion, Treasury, State, War and Navy Departments.

John T. Devine, Proprietor.



KENILWORTH INN, BILTMORE, NEAR ASHEVILLE, N. C.

JUST THE PLACE TO STOP ON YOUR WAY SOUTH.

Recognized as the leading hotel of Western North Carolina. No scenery in the world will compare with the view from this hotel—Mt. Mitchell and Pisgah in full view. Adjoins and overlooks the Biltmore Estate. Dry, invigorating climate. Magnificently furnished, cuisine unsurpassed. Orchestra, golf, livery, beautiful rides and drives. Coach meets all trains at Biltmore Station. Open all the year. Send for booklet.

EDGAR B. MOORE, Proprietor.

THE GORHAM MF'G CO.

TROPHIES FOR ALL SPORTING EVENTS

AND PARTICULAR OCCASIONS

FIFTH AVENUE

NEW YORK

RIDING GOLF'S CLOSE RIVAL

Gymkhanas, Paper Chases and Saddle Picnics Add to Interest.

Country-side Round About Varied, Picturesque and Full of Human Interest.



CLOSE rival of golf here is horseback riding, for it interests a wide range of people, more than ever, since numerous gymkhanas, paper chases and the like have been introduced. Young and old, men and women, enjoy the pastime, finding health and pleasure in it, and a gymkhana frolic, or the start and finish of a paper chase, are witnessed by hundreds of interested onlookers. In addition numerous saddle picnics, in which both those who ride and drive participate, are a pleasant feature

broken by fascinating bits of human activity such as turpentine distilleries, tar kilns, lumber mills, grist mills, fruit orchards, grape vineyards, and native homes and their quaint occupants.

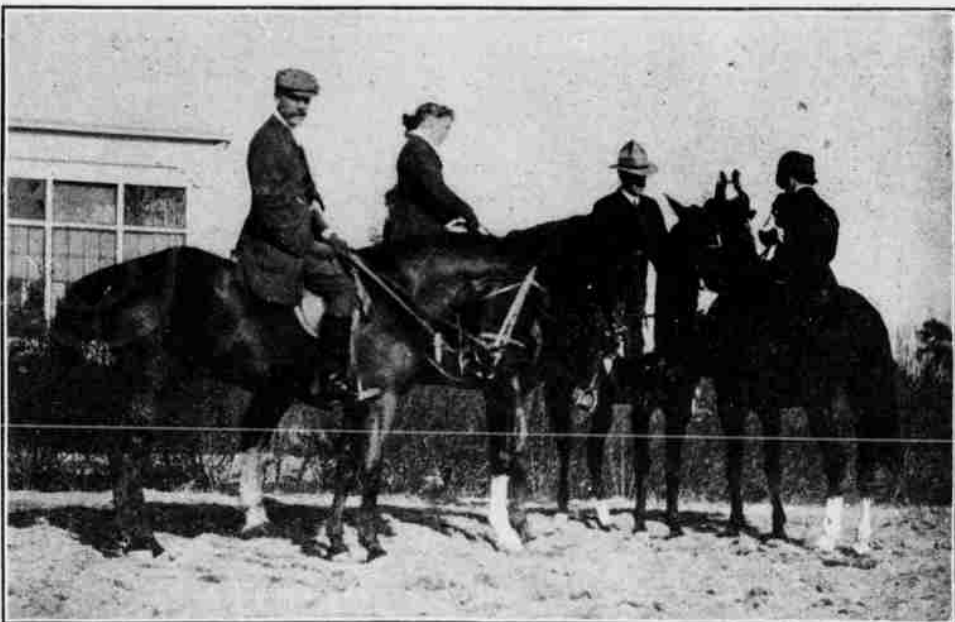
Among the most popular points are Thagard's Mills, McKenzie's Mills, Black's Mills, Wicker's Goat Farm, McCaskill's Plantation, Horner's Distillery, The Culdee Presbyterian Church, and other like places; not to mention Aberdeen, Southern Pines, Jackson Springs, Pine Bluff, Roseland, Lake View and other nearby villages.

To those desiring a detailed description of the environs, THE OUTLOOK would be glad to send a copy of the paper giving full information.

The Village Hall.

Pinehurst possesses a distinctly New England feature in its Village Hall. It is here that various public meetings, entertainments and religious services are held, as well as other gatherings.

The building is a roomy one, with a stage adapted for amateur theatricals, and a floor for dancing.



READY FOR A GALLOP.

of the winter; the whole resulting in the forming of many pleasant acquaintances and the enjoyment of many delightful hours.

Mirth provoking frolics, ludicrous features, tests of skill and mad races which make the blood come quick and fast are all happily combined in the gymkhana programs, providing not only unlimited sport for the participants, but fascinating entertainment for onlookers. The reckless spirit of the chase, and the desire to keep at the front, are the key-notes of the paper chases, and the rollicking starts and the neck and neck finishes, never fail to interest the Village guests.

As for pleasure riding, the country 'round about Pinehurst could not be better suited, innumerable roads leading off in all directions through a country possessing a peculiar charm for northerners.

Groves of towering pines, forests of oak, broad lowlands with tangles of holly and other shrubs, wide expanses of plain, golden brown with sedge grass, gleaming ponds with ancient mills and moss-covered water wheels, furnish an endless variety of picturesque scenery,

Fox Hunting Talked.

Fox hunting is being talked, and devotees of the chase will await the outcome of the discussion with keen interest. The country of the vicinity is admirable for the purpose, foxes are plenty, the horses of the stable well suited, and the addition of the sport to the already long list would be welcomed by all who love the music of the hounds.

At The Lexington.

Mrs. John Bliss returns to The Lexington and early season visitors include Mr. and Mrs. J. B. Larzelere, Jr., and daughter of Norristown, Pa.; Mr. H. R. Jennison of Georgia; Mr. Rowland Carr of Jersey City; Mr. J. A. Conover of Raleigh; Miss Elsie Thalheimer of Cincinnati; and Miss McNulty of Pittsburg.

Mrs. Peet Returns.

Mrs. W. C. Peet and family of Warwick, N. Y., return for the winter and their second season at their private cottage. The many who met Mr. Peet here last season will learn with regret of his death in September.