

# The Pinehurst Outlook

PINEHURST, MOORE COUNTY, NORTH CAROLINA

VOL. XIII

SPECIAL EARLY SEASON NUMBER, 1909-10.

FIVE CENTS

## SOUTHWARD-HO! BY AUTO!

### Capital Highway Association Opens Up New Route for Winter Touring.

Leading Tourist Resorts of the Middle South are the Attractive Objective Points.

**S**OUTHWARD-HO! will be the slogan of automobilists during the present season, striking evidence of the wonderful increase in popularity of motor touring and a significant indication of the permanent place it is to occupy. As a natural consequence of the new route comes—the desire for winter touring, resulting, no doubt, very largely from its summer popularity—and the objective points are, of course, the winter tourist resorts, just as they now are during the summer season in Northern territory.

The specially interesting local feature is that there is a new delight in store for Pinehurst visitors who bring their motor cars, for the road makers, under the direction of the Capital Highway Association with Pinehurst as the active headquarters, have been busy for five months past and the results achieved are little short of marvelous. Southward for two hundred and fifty miles to Camden, Aiken and Augusta, and northward for approximately the same distance to Richmond, the route is open, and by New Year's day this entire distance of five hundred miles, while not in ideal condition, will be practical for motoring with the exception of one gap of a few miles on the route to Richmond, which will be easily negotiable most of the time, and steadily improved until perfected.

The connecting links, for the most part of sand, are being rapidly closed. By the time the regular winter season is on, our guests may run down to Camden, one hundred and thirty miles, in a day, over a delightful road. From Camden, through Columbia to Aiken, is one hundred miles and the road is smooth with no hard grades. Twenty-five miles beyond Aiken is Augusta from where good roads lead to Savannah, one hundred and forty miles, and to Atlanta, one hundred and eighty-five miles. Thomasville, in lower Georgia, is connected with Atlanta by good roads. So we will have the four state capitals—Richmond, Raleigh, Columbia and Atlanta—linked together, with the famous resorts—Pinehurst,

Camden, Aiken and Augusta—between at convenient distances.

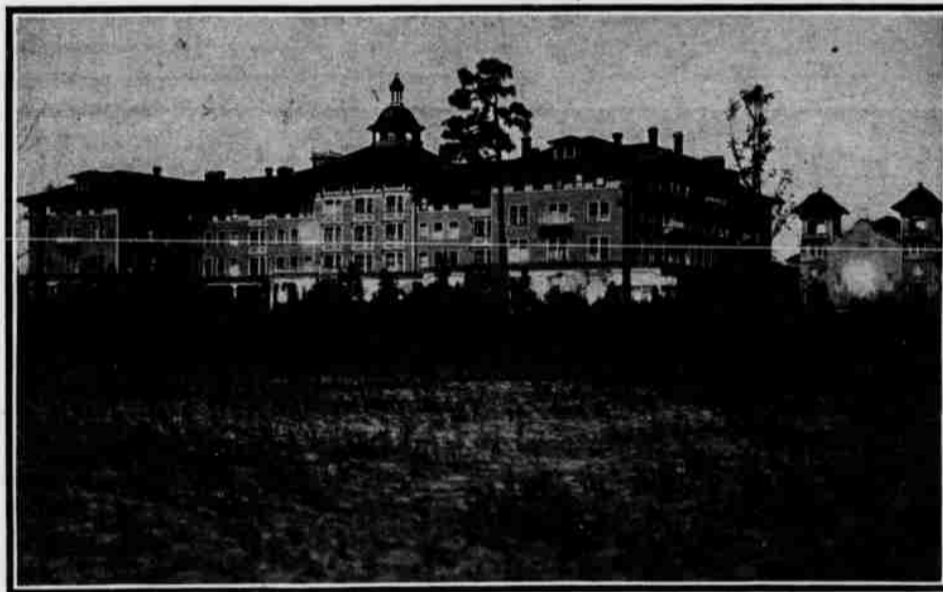
Our former guests know the splendid roads hereabout—sand clay we call them, smooth and firm, dustless and mudless—stretching like ribbons of gold along the sand ridges, dipping now and then to cross a rippling stream and running in and out among the pines. To paraphrase old Dr. Boteler, per the lamented Izaak Walton, "Doubtless man could have made a better road for motoring but doubtless he never did." This is the kind of road which the two Carolinas and Georgia have been building this year. Virginia's type is different, gravel being used where we use sand. Both kinds are fine, durable, economical to build and to maintain. It is a constant joy to motor over these smooth roads, even at a pace far below the speed limit.

The ultimate purpose of the Association which is promoting the Capital

We wish to impress on motorists the fact that the Capital Highway will be the only attractive, indeed, one may say the only possible winter tour in the United States. Sand-clay roads do not freeze. Rain does not make them muddy. Snow seldom falls along the route of the Capital Highway below Richmond and when it does it is

"Like the snowfall in the river,  
A moment white—then melts forever."

Instead of storing your car, bring it with you, Oh Tourist, and winter in the South will reveal new charms to you. There are many interesting and delightful places to see. You can visit your friends at other resorts; you can meet the citizens of the back country; a sociable, hospitable people whom you will be glad to know. You can explore many a town which heretofore has been rather inconvenient to reach. Seventy-five miles above Pinehurst is Raleigh.



A MOONLIGHT PHOTOGRAPH OF THE CAROLINA BY MR. TYLER L. REDFIELD.

Highway, is to push it on to Washington where it will connect with an excellent macadam road which Maryland is building, and thence by Baltimore and Philadelphia to New York. The link from Richmond to Washington one hundred and thirty-five miles, will not be completed before the latter part of 1910, and we would not advise anyone to undertake to motor down to Richmond the coming season. But from Richmond to Pinehurst we hope the roads will be all right and we hope to have them marked by the first of the year.

Our guests can ship their cars by rail to Richmond or Pinehurst, or by water from Boston, Providence, New York, Philadelphia, Baltimore or Washington to Norfolk or to Savannah. For fifty miles out of Norfolk there is considerable sand, but after reaching the Capital Highway, the tourist will have easy sailing, if an auto may be said to sail.

The State's museum there, containing specimens of North Carolina's minerals, agricultural products, fauna, etc., is well worth stopping over to see. From Raleigh two routes lead North toward Richmond, one by way of Wake Forest, the site of the State University, and Franklinton, a cotton mill town, thirty miles above the capital.

The other route goes by Durham, a thriving, enterprising city of thirty thousand people, twenty-four miles from Raleigh. Durham is a famous tobacco market and manufacturing town. It is the home of the Dukes, who are at the head of the tobacco manufacturing industry of the world. Durham is destined to become a great industrial point. This county has many miles of fine macadam road and its public spirited citizens were the first to aid the Capital Highway. Thirty miles north of Durham is Oxford

(Concluded on page 13)

## VILLAGE SMILES A WELCOME

Everywhere are Gratifying Evidences of Summer of Accomplishment.

Cottage Colony Extension, Golf Course Perfection and Good Roads Development are Features.

**S**ELDOM has the Village shown more gratifying evidence of the results of a summer of accomplishment, smiling its welcome as it does, in prim, orderly neatness, with smooth, white roadways winding in and out among shrubbery glowing in the rich green of early fall and hotels and cottages gleaming in new paint. Changes and improvements there are everywhere indicative of thought which anticipate, extension and development in all departments which provide in advance for future growth, evidences of loving care which give the place more and more the character of a private estate and make the visitor a privileged guest.

Never has Pinehurst been better prepared to welcome its friends and to old and new the greeting is one which makes the heart glow with a realization of life's real meaning; a pleasing picture of New England energy and thrift, glorified by the bright sunshine and blue skies which make the best days of early northern October so delightful, for in this southern clime, Autumn disdains Dreary Winter and, rejoicing, passes swiftly on to greet Radiant Spring.

Complete unto itself, unequalled in equipment, Pinehurst remains, exemplifying the pleasures of life in the open as they are not exemplified elsewhere. Perfection in climate and natural advantages, the purest of air, the brightest of sunshine, and the best of water were the nucleus of it all, and 'round this the splendid Village of today has sprung in fourteen short years, until Pinehurst and health and happiness are now synonymous, one may truly say, the wide world over. As it is "Wonderland Village" to the child, so it is to the thousands who flock here during the season; a "winter-summer" resort where days, weeks and months, blend into one perfect whole of hours happily spent.

COTTAGE COLONY EXTENSION.

Most gratifying of all, indicative as it is of the permanent place Pinehurst holds in the hearts of its admirers, is the

(Concluded on page 9)