

ton by a peculiar screw attachment which prevents it from moving at the top. It has been previously determined by many experiments how much pressure is required to squeeze this lead cylinder to a certain thickness, and when the cylinder is squeezed down by the powder gas to a certain dimension, it is assumed that it required that much pressure to give it the reduction in length.

If it is found by actual test that the pressure is too high, the entire lot of powder is rejected and further blends made up which will give the proper pressure and will not exceed certain safe specifications.

In order to insure perfect uniformity in a lot of powder, blends of from 10,000 to 20,000 pounds are manufactured. This quantity of powder will load many thousands of cartridges, each one containing a charge of powder taken from a lot which is absolutely uniform throughout its entire mass.

The Blend House which the Du Pont Company is using cost a large amount of money, but for the sake of uniformity and a better product it is thought well worth the cost of its erection. The Company knows that when a lot of powder weighing from 10,000 to 20,000 pounds is marketed, it is absolutely uniform and no criticism can be made against it by stating that the powder in the cartridges loaded from that particular lot is not uniform.

In order to insure uniformity of one lot to another lot of finished powder, the specifications of manufacture are made so rigid in regards to pressure and velocity, that the actual difference in tests between finished lots is hardly noticeable. This is further exemplified by the fact that the process of manufacture is continuous and that one lot of, say, 10,000 pounds of powder is a small portion of the entire stock of powder on hand.

Before the powder is ready for shipment to the loading Companies or to the general trade a final test is made. This includes further tests for velocity, breech pressure, barrel time, residue after firing, patterns, etc., all separate and distinct from the chemical tests which are also made.

It is quite interesting to study the various tests and to notice the uniformity which exists from lot to lot. If a lot of powder fulfill all the requirements it is then packed and sent to one of the Ammunition Companies, thus insuring the uniformity of thousands of cartridges. If there is any question about the lot of powder being entirely satisfactory in every respect, it is put aside and another lot which does fulfill all requirements is sent.

The same care and attention is taken in the manufacture of "dense" "Infallible" powder which has to go through all of the tests in exactly the same manner as "bulk" powder.

In fact:—Throughout the entire stage of manufacture of these powders, they are tested from time to time, absolutely making it sure that no powder goes to the public which does not appear to be thoroughly satisfactory in every respect.

—E. A. WHISTLER EVERITT,

(Ballistic Engineer, E. I. Du Pont de Nemours Powder Co.)

TOURNAMENT PROGRAM.

Golf, Tennis, Trap and Pistol Events for Balance of Season.

The following is the Country Club's schedule of tournaments for the balance of the season:

GOLF.

FEBRUARY 9, 10, 11, 12—Sixth Annual St. Valentine's tournament.

FEBRUARY 16, 17, 18, 19—Fourth Annual St. Valentine's tournament for Women.

MARCH 9, 10, 11, 12—Sixth Annual Spring tournament.

MARCH 16, 17, 18, 19—Sixth Annual Club Championship.

MARCH 22, 23, 24, 25, 26—Eighth Annual United North and South Amateur Championship for Women.

MARCH 28—Tenth Annual United North and South Open Championship.

MARCH 30, 31, April 1, 2—Tenth Annual United North and South Amateur Championship.

APRIL 14, 15, 16—Second Annual Mid-April tournament.

TRAP SHOOTING.

JANUARY 19, 20, 21, 22—Third Annual Midwinter Handicap.

JANUARY 31 to MARCH 28—Weekly One Hundred-Target Handicap tournaments. GOLD MEDAL for best scores made during the season.

PISTOL SHOOTING.

MARCH 21-26—Annual U. S. R. A. and Pinehurst Championships.

WEEKLY HANDICAPS at frequent intervals during the season.

LAWN TENNIS.

FEBRUARY 8—Men's Singles.

MARCH 8—Women's singles.

MARCH 14, 15, 16—Pinehurst Championship.

TIN WHISTLE GOLF EVENTS.

JANUARY 17, Three-ball handicap match, on basis of twenty-seven entries.

JANUARY 24, Swatfest handicap.

JANUARY 31, Round robin handicap.

FEBRUARY 7, Medal play handicap.

FEBRUARY 14, Four-ball foursome, handicap, medal play (combined scores).

FEBRUARY 21, Medal play handicap, best selected twelve holes.

FEBRUARY 28, Morning, invitation medal play handicap for women. Afternoon, Medal play handicap vs. Bogey, in three classes.

MARCH 7, Two-ball foursome, handicap, medal play.

MARCH 14, Four-ball foursome, handicap, medal play (best ball.)

MARCH 21, 22, 23, Seventh annual tin whistle Championship.

MARCH 28, Medal play handicap.

Sunday Services.

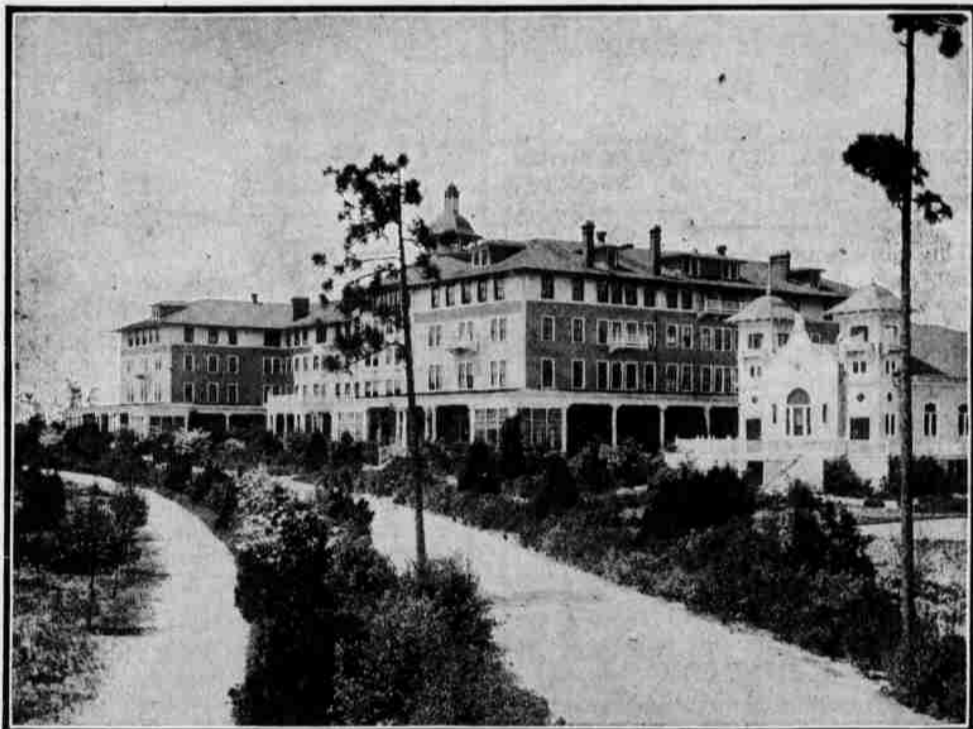
Holly Communion	7.30 A. M.
Morning Service	11. A. M.
Sunday School	3.30 P. M.

Mr. Hague's Birthday.

Mr. George Hague of Montreal, observed his 85th birthday at The Carolina quietly on Thursday.

THE CAROLINA

PINEHURST, N. C.



The Carolina is a magnificent four-story building completed in 1900. The interior is a model of elegance, with appointments calculated to suit the most luxurious tastes. The hotel accommodates five hundred guests and is provided with seventy-four suites with bath. The cuisine and table service are unsurpassed.

The house contains every modern comfort and convenience, including elevator, telephone in every room, sun rooms, steam heat night and day, electric lights, and water from the celebrated Pinehurst Springs, and a perfect sanitary system of sewage and plumbing.

H. W. PRIEST, Manager.



The Berkshire,

PINEHURST, N. C.

The Berkshire is a modern hotel, delightfully located with all conveniences for health and comfort; running water from the celebrated Pinehurst Springs, bath rooms, steam heat, open fires and electric lights and sanitary plumbing. The guests apartments are comfortable and home-like and the public rooms large and attractive. The cuisine and service is of a high standard.

F. C. ABBE, MANAGER.



HOTEL WENTWORTH,

The Leading New England Coast Summer Resort.

NEW CASTLE, PORTSMOUTH, N. H.

Every facility for sport and recreation: Golf, tennis, riding, driving, yachting, fishing, still and surf bathing and well equipped garage under competent supervision. Music by symphony orchestra. Accommodates 500. Local and long distance telephone connection in every room. Send today for a beautifully illustrated book.

Wentworth Hotel Co., H. W. Priest, Managing Director
Address Until May 1, The Carolina, Pinehurst N. C.