

and on the mainland, is Southport, once Smithville, where stand the ruins of Fort Johnson, built to protect old Brunswick and later Wilmington, from pirates and foreign foes. Further up the Cape Fear river, and on the Southport side, nearly opposite the ruins of Fort Fisher, is the site of the once important town of Brunswick, for years the seat of North Carolina government, but now a place of tombs and fortifications. The church there, built in 1742, is the most imposing in North Carolina, and in the church yard around it are magnificent monuments over the graves of noted men and women, buried during the last half century. Fort Anderson, which was built jointly with Fort Fisher to guard Wilmington, stands almost as it stood in 1865, the high earthworks coming within a few yards of the church. Not far away are the ruins of the governor's house and warehouses, and there are also signs of the old landing, which was in use nearly two centuries ago; all in all, a combination of interest which one may seek far and find not.

FRED A. OLDS

OH! YOU HONEYMOON!

Huge "Christmas" Card Bearing Significant Inscription

The evening mail brought it; a huge 10x14 post card—a *la Roycroft*.

An obliging bell boy delivered it in the presence of a crowded lobby, "butter side down," to Mr. and Mrs. ———.

She glanced at him—he looked at her; he turned it over:

OH! YOU
HONEYMOON!

"Nice thing to send a couple, married eight months," was *his* comment with apparent annoyance; but *she* only blushed becomingly.

Jolly Christmas Dinner

Numerous dinners have enlivened the week, among them a jolly Christmas spread for a close circle of intimates, including Mr. and Mrs. Allan Lard of Washington, Mr. and Mrs. Justus Kendall of Worcester, Mr. J. A. Gammons and Mr. J. C. Wilbur of New York, Dr. Myron W. Marr of Dorchester and Miss Lucy K. Priest of New Castle. The favors were mechanical toys which provided much amusement as well as the jingle-verse place cards.

Solos by Mr. Thouret

Pianoforte solos by Mr. P. F. Thouret added to the interest of Sunday evening's orchestral concert. The program:

Overture "Fra Diavolo"	Auber
Walther's Prellied	Wagner
Duo for Cello and Clarinet "Serenade"	Titl
Messrs. Clyde Grant and J. H. Waters	
The Busy Bee	Bendix
Piano Solo "Impromptu opus 142"	F. Schubert
Mr. Thouret	
Salut d'Amour	Elgar
Selections from Faust	Gounod

Midwinter Tennis Tourney

The addition of mixed doubles and women's doubles adds much to the Midwinter Tennis Tourney, scheduled for Jan. 29—Feb. 3. Advance entries, this early, assure a splendid field.

THE ADVERTISING TOURNEY

Big Crowd Coming for the Annual Winter Meeting

No less than eighty-two prizes are offered for the Advertising Golfers Association which begins at Pinehurst on January 13. There is sport by wholesale, but as there are very many regular and affiliated members it takes a good many prizes to give all a chance. There are fourteen events in all, nine for men and five for women, besides the main tournament for each sex. The opening competition is a novelty in the way of a mixed festsome, to coin a word for the method of scoring. Instead of counting the best ball of each couple as is customary, the best ball of all four will be counted and the low net card in this compilation will bring a prize to each of the four players. It will be a medal play handicap. A trophy will be given to the four women in this event who have the lowest best ball net score. These prizes have been given by Leonard Tufts.

The main tournament for men and women begins on Monday, January 15. The men's qualifying round will be continued on Tuesday, eighteen holes being played each day. There will be a gross and five net score prizes in each half of the qualifying play. The women will play an eighteen hole qualifying round and finish in sets of eight instead of sixteens.

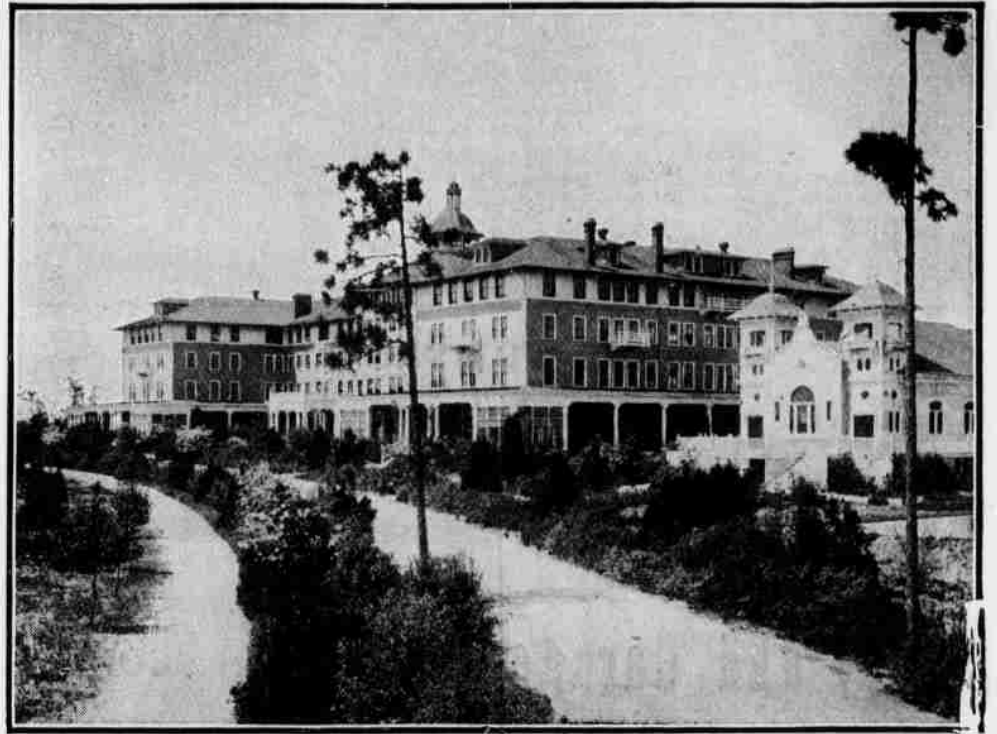
On Monday afternoon there will be a competition suggested by R. R. Mamlox. There will be sixteen teams of six men each under these captains: W. H. Childs, Louis A. Hamilton, Joseph P. Knapp, J. H. Ottley, Frank Presbrey, F. K. Robeson, Russel R. Whitman, William Shillaber, Jr., J. D. Plummer, Z. T. Miller, E. F. Clymer, T. A. Matthews. A. L. Aldred, S. Keith Evans, S. L. Allen and D. S. White. It will be an eighteen hole handicap. Each captain will select five other players and will assign to himself and his mates the particular club each will use in the contest. They will only use the one club each. The six who return the lowest net score will each receive a prize.

The women will start their matches on Tuesday afternoon and are due to play their final on Thursday. The men begin matches on Wednesday and will reach the finals on Saturday, all rounds being at eighteen holes except in the final for the championship. There will be prizes for the winner and runner up in the first eight of six sixteens and for the winner and runner up in the beaten eights of six sixteens, or twenty-four prizes in all. The prizes for women are for winners and runner ups in eights and fours, eight trophies in all.

To conclude this chronicle of richness in awards and opportunities for golf there will be a handicap for a gross and three net prizes on the Friday, for the men not engaged in the semi-finals and on Saturday a bogey handicap for men and women with four regular prizes and two especially for the women. Also throughout the week there will be a putting contest for men and women in which each contestant may put once around the clock green each day. The best score and the second best made on any day of the six will win.—*New York Sun*.

THE CAROLINA

PINEHURST, N. C.



The Carolina is a magnificent four-story building completed in 1900. The interior is a model of elegance, with appointments calculated to suit the most luxurious tastes. The hotel accommodates five hundred guests and is provided with seventy-four suites with bath. The cuisine and table service are unsurpassed.

The house contains every modern comfort and convenience, including elevator, telephone in every room, sun rooms, steam heat night and day, electric lights, and water from the celebrated Pinehurst Springs, and a perfect sanitary system of sewage and plumbing.

H. W. PRIEST, Manager.

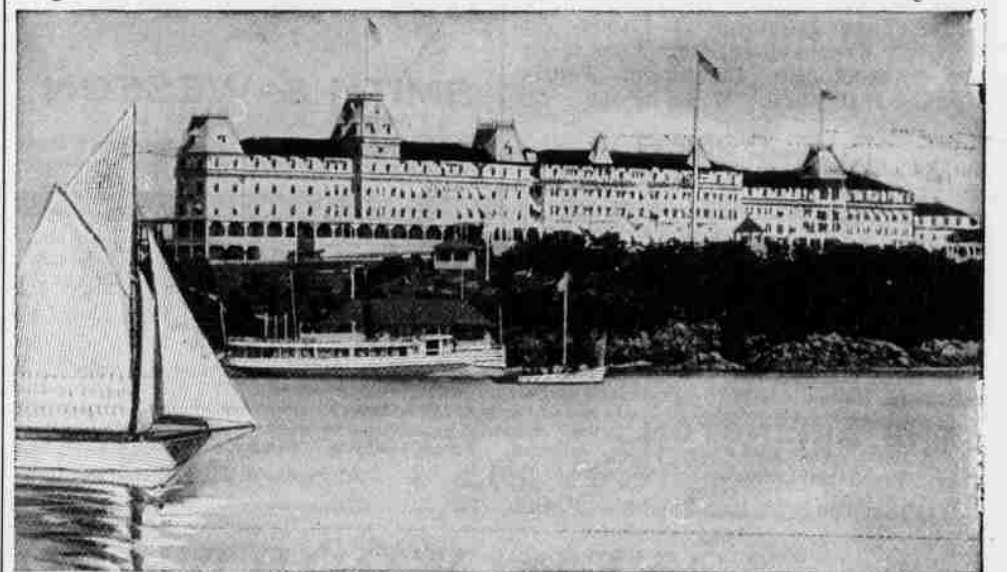


The Berkshire,

PINEHURST, N. C.

The Berkshire is a modern hotel, delightfully located with all conveniences for health and comfort; running water from the celebrated Pinehurst Springs, bath rooms, steam heat, open fires, electric lights and sanitary plumbing. The guests apartments are comfortable and home-like and the public rooms large and attractive. The cuisine and service is of a high standard. A billiard room and barber shop have been recently added for the convenience of the guests.

F. C. ABBE, MANAGER.



HOTEL WENTWORTH,

The Leading New England Coast Summer Resort.

NEW CASTLE, PORTSMOUTH, N. H.

Every facility for sport and recreation: Golf, tennis, riding, driving, yachting, fishing, still and surf bathing and well equipped garage under competent supervision. Fine livery. Music by symphony orchestra. Accommodates 500. Local and long distance telephone connection in every room. Send today for a beautifully illustrated book.

Wentworth Hotel Co., H. W. Priest, Managing Director

Address Until May 1, The Carolina, Pinehurst, N. C.