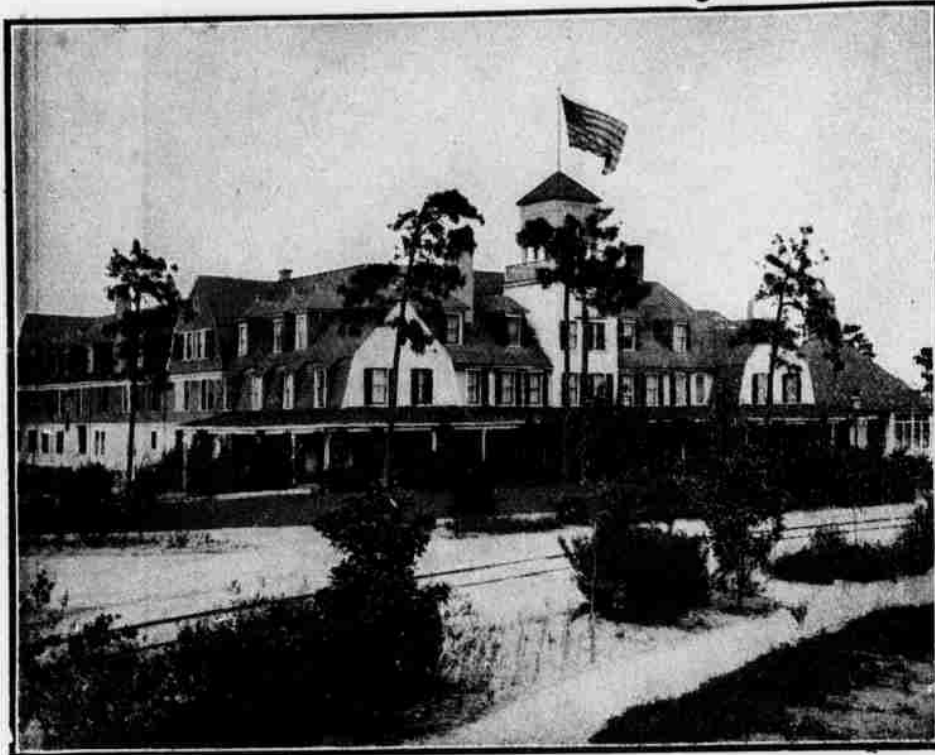


THE HOLLY INN

PINEHURST, N. C.



The Holly Inn is one of the most attractive hotels in the South. Since it was built in 1895 it has been necessary to enlarge it several times to meet the constantly increasing demand. The interior is elegant, cheerful and tasteful. No modern convenience is lacking. There are many suites with private bath, steam heat in all rooms and open fireplaces in foyer and parlors. Music is furnished for concerts and dancing and the Holly Inn ball-room is one of its attractions. The cuisine and service excel. White girls from the North are employed as waitresses. The Holly Inn offers an attractive home to pleasure seekers from November to May.

A. I. CREAMER, Manager.

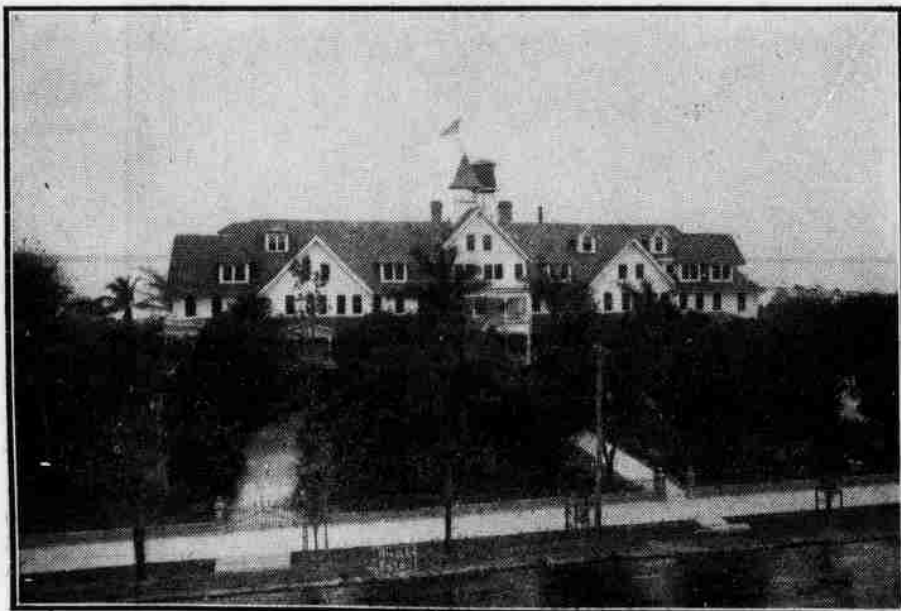


The Harvard,

PINEHURST, N. C.

A homelike hotel, modern in every respect, having electric lights, steam heat and several suites with bath, and with its cottage annex, accommodating seventy-five guests run in connection with The Berkshire.

F. C. ABBE, MANAGER.



HOTEL ROYAL PALM, Fort Myers, Fla.

BOATING, FISHING, SHOOTING, GOLF.

Those wishing to enjoy the most tropical spot in Florida, should visit this winter retreat, beautifully located on the sylvan winding Caloosahatchee twenty miles from the Gulf of Mexico. Hotel Royal Palm is one of the most attractive and palatial hotels in south Florida. Cuisine unsurpassed, yachts, power and house boats, automobiles, livery, golf, and also affords a music room, sun parlor, dutch room and has one hundred and fifty rooms, mostly with private baths. The Clubhouse is equipped with a swimming pool, sulphur baths and a large number of private baths. Experienced masseuse in attendance. Excellent fishing. Finest Section in the state for shooting.

F. H. ABBOTT, Manager

TIED AT THIRTY-SIX HOLES

Two Courses are Brought Into Use in Spring Golf Tourney Qualification



A THIRTY-SIX hole qualification tie between Walter J. Travis and Dr. C. H. Gardner was the brilliant feature of the opening play in the annual Spring golf tournament, the scores seventy-seven and eighty in favor of Dr. Gardner on the first round, and the order reversed on the second; the entire field playing eighteen holes upon both the number one and number two courses. The cards:

| MR. TRAVIS | | | | | | | | | |
|-------------|---|---|---|---|---|---|---|-------------|--|
| OUT-5 | 6 | 4 | 4 | 6 | 3 | 5 | 3 | 3-39 | |
| IN -6 | 4 | 6 | 5 | 6 | 4 | 4 | 3 | 3-41-80 | |
| OUT-5 | 5 | 3 | 5 | 4 | 3 | 4 | 4 | 5-38 | |
| IN -3 | 4 | 4 | 4 | 5 | 5 | 6 | 3 | 5-39-77-157 | |
| DR. GARDNER | | | | | | | | | |
| OUT-5 | 5 | 4 | 5 | 4 | 3 | 5 | 3 | 5-39 | |
| IN -5 | 4 | 4 | 4 | 7 | 3 | 4 | 3 | 4-38-77 | |
| OUT-4 | 4 | 3 | 4 | 4 | 5 | 4 | 4 | 6-38 | |
| IN -5 | 2 | 5 | 4 | 5 | 5 | 7 | 4 | 5-42-80-157 | |

On the playoff Mr. Travis won, seventy-four to seventy-seven in very fast play. Going out Mr. Travis made the turn in thirty-six to thirty-eight for his opponent, winning the third, fourth and sixth holes and losing the seventh. Coming home the cards were thirty-eight for Mr. Travis and thirty-nine for Dr. Gardner, the Rhode Islander winning the tenth, eleventh and fourteenth, and losing the twelfth, thirteenth, sixteenth and seventeenth. The cards:

| | | | | | | | | | |
|---------|----|---|---|---|---|---|---|---------|------|
| TRAVIS | -4 | 4 | 4 | 4 | 5 | 3 | 6 | 3 | 3-36 |
| GARDNER | -4 | 4 | 5 | 5 | 4 | 5 | 3 | 3-38-74 | |
| TRAVIS | -5 | 5 | 4 | 4 | 5 | 4 | 3 | 4-38 | |
| GARDNER | -4 | 4 | 5 | 5 | 3 | 4 | 6 | 4-39-77 | |

In third position W. C. Fownes, Jr., the 1910, amateur champion, led Allan Lard, twice United champion, by a single stroke, the cards one hundred and sixty-two and one hundred and sixty-three. At one hundred and seventy-two which marked the limit of admission to the first division, I. S. Robeson and B. T. Allen won from F. H. Perkins and N. S. Hurd on the playoff. The scores:

| PRESIDENT'S CUP | | | |
|-------------------------------|----|----|-----|
| W. J. Travis, Garden City | 80 | 77 | 157 |
| Dr. C. H. Gardner, Agawam | 77 | 80 | 157 |
| W. C. Fownes, Jr., Oakmont | 81 | 81 | 162 |
| Allan Lard, Chevy Chase | 81 | 82 | 163 |
| Robert Hunter, Wee Burn | 85 | 81 | 166 |
| Chisholm Beach, Fox Hills | 83 | 83 | 166 |
| H. C. Fownes, Oakmont | 89 | 78 | 167 |
| E. L. Scofield, Jr., Wee Burn | 86 | 81 | 167 |
| C. L. Becker, Woodland | 84 | 83 | 167 |
| P. S. MacLaughlin, Ekwanok | 90 | 80 | 170 |
| C. N. Phillips, Greenwich | 90 | 80 | 170 |
| F. K. Robeson, Oak Hill | 90 | 81 | 171 |
| C. M. Fink, Dunwoodie | 86 | 85 | 171 |
| A. A. Stagg, Chicago | 87 | 84 | 171 |
| I. S. Robeson, Oak Hill | 88 | 84 | 172 |
| B. T. Allen, Fox Hills | 84 | 88 | 172 |

| GOVERNORS' CUP | | | |
|--------------------------------|----|----|-----|
| N. S. Hurd, Oakmont | 86 | 86 | 172 |
| F. H. Perkins, Wannamoissett | 92 | 80 | 172 |
| J. S. Sweeney, Detroit | 85 | 88 | 173 |
| J. D. Armstrong, Park Club | 90 | 84 | 174 |
| F. W. Weston, Dunwoodie | 95 | 81 | 176 |
| J. D. Foot, Apawamis | 83 | 93 | 176 |
| R. F. Kelton, Mt. Tom | 90 | 86 | 176 |
| Spencer Waters, Apawamis | 86 | 91 | 177 |
| W. L. Milliken, Indianapolis | 91 | 87 | 178 |
| R. J. Clapp, Highland Country | 88 | 91 | 179 |
| H. M. Robinson, Montclair | 97 | 82 | 179 |
| E. A. Johnston, Baltimore Cty. | 92 | 87 | 179 |
| Col. J. E. Smith, Wilmington | 86 | 93 | 179 |
| C. H. Banes, Overbrook | 94 | 85 | 179 |

| | | | |
|-----------------------------|----|----|-----|
| E. J. Spaulding, Waubanakee | 90 | 89 | 179 |
| W. R. Thayer, Boston | 88 | 91 | 179 |

| SECRETARY'S CUP | | | |
|-----------------------------------|----|----|-----|
| R. B. Vallance, New York | 93 | 87 | 180 |
| J. Curtis, Rochester | 94 | 86 | 180 |
| T. B. Boyd, Belleveve | 97 | 84 | 181 |
| C. A. Hartwell, Oakley | 92 | 89 | 181 |
| J. F. Taylor, Essex | 89 | 92 | 181 |
| S. D. Wyant, Fond du Lac | 98 | 88 | 181 |
| W. S. Dillon, Fitchburg | 85 | 96 | 181 |
| J. M. Yuille, Royal-Toronto | 86 | 95 | 181 |
| W. E. Wells, Steubenville, W. Va. | 90 | 92 | 182 |
| E. M. Taft, Woodland | 89 | 93 | 182 |
| J. A. Atwood, Beaver Valley | 89 | 93 | 182 |
| W. E. Truesdell, Huntington | 92 | 91 | 183 |
| C. L. Jones, Oakmont | 88 | 95 | 183 |
| R. R. Fitch, Rochester | 92 | 91 | 183 |
| E. P. Williams, Springhaven | 95 | 88 | 183 |
| H. D. Brewster, Scarsdale | 99 | 85 | 184 |

| TREASURER'S CUP | | | |
|-------------------------------|-----|-----|-----|
| W. J. Curtiss, Rochester | 95 | 89 | 184 |
| W. A. Nicholson, Oakmont | 97 | 88 | 185 |
| H. R. Mackenzie, St. Andrews | 94 | 92 | 186 |
| R. P. Alden, Springfield | 95 | 92 | 187 |
| A. L. Carr, Belleme, Melrose | 94 | 93 | 187 |
| S. A. Hennessie, Cooperstown | 91 | 97 | 188 |
| C. E. Titchener, Binghampton | 100 | 88 | 188 |
| W. F. Piteher, Joliet Country | 93 | 96 | 189 |
| Dr. Otto Sasse, Toledo | 90 | 99 | 189 |
| W. S. Grant, Oak Hill | 87 | 103 | 190 |
| E. J. Phillips, Nassau | 96 | 94 | 190 |
| W. R. Hetzel, Ridley | 104 | 87 | 191 |
| H. H. Brown, Salem | 102 | 89 | 191 |
| G. F. Stebbins, Fox Hills | 103 | 88 | 191 |
| A. F. Rodger, Lambton | 97 | 95 | 192 |
| H. O. Smith, Oakley | 96 | 96 | 192 |

| CAPTAIN'S CUP | | | |
|--------------------------------|-----|-----|-----|
| Basil Durant, Santa Barbara | 99 | 94 | 193 |
| R. H. Hunt, Worcester | 93 | 101 | 194 |
| W. H. Hurlburt, Whitmarsh Val. | 103 | 91 | 194 |
| G. S. Knapp, Baltusrol | 100 | 95 | 195 |
| Dr. G. T. Gregg, Pittsburgh | 99 | 96 | 195 |
| W. H. Childs, Dyker Meadow | 97 | 99 | 196 |
| J. M. Hodson, Ardsley | 100 | 97 | 197 |
| E. A. Tracy, So. Coventry | 99 | 98 | 197 |
| W. S. Lee, Rochester | 95 | 103 | 198 |
| F. W. Stevens, Morris Country | 96 | 103 | 199 |
| A. W. Smith, Buffalo Country | 100 | 99 | 199 |
| T. B. Thompson, St. Andrews | 102 | 97 | 199 |
| George S. Jenks, Oakmont | 102 | 98 | 200 |
| L. M. Folsom, Intervale | 102 | 98 | 200 |
| D. W. Smith, Detroit | 94 | 106 | 200 |
| W. T. Stall, New York | 96 | 104 | 200 |

| CLUB CUP | | | |
|-------------------------------|-----|-----|-----|
| Charles Fletcher, Bellevue | 103 | 98 | 201 |
| L. H. Lapham, Apawamis | 101 | 100 | 201 |
| J. D. C. Rumsey, Brooklyn | 106 | 95 | 201 |
| W. A. Dawson, Blue Mound | 106 | 95 | 201 |
| J. L. Wyckoff, Mt. Tom | 102 | 100 | 202 |
| H. C. Morse, Belleme, Melrose | 101 | 102 | 203 |
| L. W. Helgho, Detroit | 104 | 99 | 203 |
| E. S. Gregory, Albany | 101 | 103 | 204 |
| C. F. Walden, Crescent | 108 | 96 | 204 |
| J. V. Hurd, Pittsburgh | 106 | 98 | 204 |
| L. O. Crane, Boston | 105 | 99 | 204 |
| F. D. Parsons, Springfield | 103 | 101 | 204 |
| W. S. Rathbone, Detroit | 105 | 100 | 205 |
| A. M. Clark, Youngstown | 100 | 105 | 205 |
| C. F. Garfield, Oak Hill | 105 | 100 | 205 |

| SEVENTH DIVISION | | | |
|------------------------------|-----|-----|-----|
| M. E. Haviland, Garden City | 104 | 101 | 205 |
| E. L. Scofield, Wee Burn | 105 | 100 | 205 |
| W. H. Sargent, Oxford | 102 | 104 | 206 |
| A. W. Beldler, Midlothian | 114 | 92 | 206 |
| A. S. Cook, Wannamoissett | 109 | 97 | 206 |
| C. S. Waterhouse, Woodland | 104 | 102 | 206 |
| H. H. Buckley, Dunwoodie | 103 | 103 | 206 |
| W. F. Lewis, Kenilworth Cty. | 107 | 99 | 206 |
| R. H. Cushman, Munson | 108 | 98 | 206 |
| Donald Parsons, Youngstown | 103 | 104 | 207 |
| T. W. Connor, Detroit | 97 | 110 | 207 |
| B. S. Pearsall, Elgin | 103 | 104 | 207 |
| J. C. Neff, Merion | 108 | 100 | 208 |
| H. W. Heyer, Crescent | 101 | 107 | 208 |
| F. J. Burrage, Brae Burn | 100 | 109 | 209 |
| D. P. Morse, Nassau | 101 | 108 | 209 |

| EIGHTH DIVISION | | | |
|--------------------------------|-----|-----|-----|
| L. H. Chase, Whitmarsh Va. | 98 | 111 | 209 |
| F. B. Washburn, Tatnuck | 110 | 100 | 210 |
| Charles Asam, Whitmarsh Val. | 108 | 103 | 211 |
| S. E. Comstock, Oak Hill | 111 | 100 | 211 |
| Rev. T. A. Cheatham, Salisbury | 110 | 101 | 211 |
| I. Melanson, Danvers | 113 | 98 | 211 |
| T. H. McGraw, Jr., Oakmont | 99 | 112 | 211 |

(Concluded on page eleven)