

The Shoreham; Washington's Famous Hotel

Will reopen on or about December 15th, having been closed for extensive structural alterations, improvements, re-decorating and re-furnishing. All bedrooms now have baths and running water.

W. H. BARSE, Manager

Hotel Continental

Washington, D. C.

Opposite Union Station Plaza

A. W. CHAFFEE, Manager

NEEDLEWORK NOVELTIES

EXHIBITION ROOM

HIGHLAND PINES INN

Weymouth Heights

SOUTHERN PINES, N. C.

The Magnolia

PINEHURST, N. C.

Steam Heat, Electric Lights, Excellent Table

SOUTHERN PINES HOTEL,

Southern Pines, N. C.

J. L. POTTLE & SON, Managers

The Arts & Crafts

NOW OPEN

General Office Building

Manicure, Shampooing, Chiropody and Marcel Wave
Scalp, Facial and Body Massage with Vibrator.
Special toilet articles and hair goods

LAURA AGNES WALKER—Room 2—THE CAROLINA

Your Summer Tour



Will be incomplete, without a run through picturesque **DIXVILLE NOTCH**. You will find there the best service and homelike comfort; and a well equipped garage.

Write for interesting illustrated booklet.

DIXVILLE NOTCH, THE BALSAMS, New Hampshire.
Philadelphia Office: 608 Perry Bldg., 18th and Chestnut Sts.

Pinehurst Livery

BEST EQUIPMENT

IN THE

MIDDLE SOUTH

SADDLE HORSES A SPECIALTY

Automobiles For Hire

PINEHURST'S WATER SUPPLY

Consulting Engineer J. L. Ludlow of State Board Describes It

Virgin Water Shed Reserve Conserves Wholesome Purity of Unusually High Standard of Quality



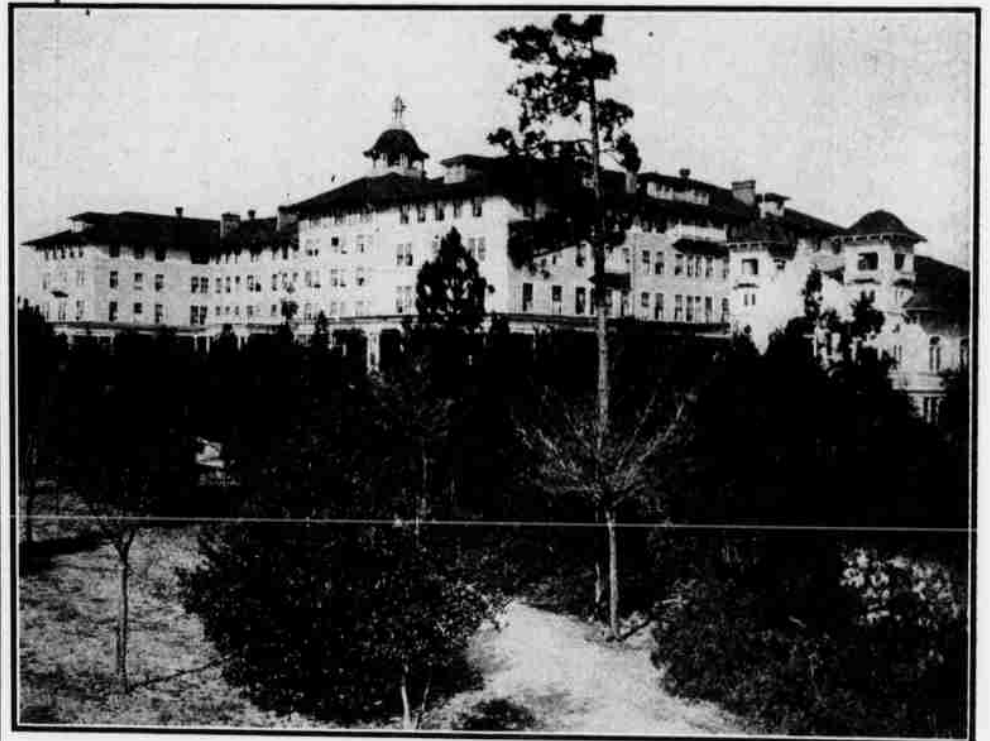
THE COMPLETION of Pinehurst's new water supply, anticipating as it does future needs in accordance with the high standards of modern requirements, is a gratifying evidence of Village perfection. Consulting Engineer J. L. Ludlow of the North Carolina State Board of Health, under whose direction as supervising engineer the work has been carried forward, regards the supply as ideal.

"North Carolina," he writes, "has very advanced laws governing the protection of public water

use of golfing, but remaining in its virgin state, reserved wholly to water supply purposes and conserving its utmost purity. This insures a quality of water supply as pure and wholesome as nature affords. But to make assurance doubly sure and to remove any taint of color that may result from the leaves and trees which abound on the water shed, the water will be filtered through a sand filter of the English type. Thus Mr. Tufts succeeds in his desire to furnish his patrons a quality of water for drinking and other domestic uses that is unsurpassed, having an unusually high standard of "pure and wholesome" quality as well as being soft and otherwise physically attractive for the bath and other domestic uses.

"This water is distributed from an elevated tank of sufficient capacity and height to ensure at all times an abundance under such pressure as to meet the requirements of all service, including the protection from fire of the property and the life of residents." (Signed) J. L. LUDLOW.

NOTE.—Mr. Ludlow is also Chairman of the Sanitary Engineering Section of the American Public Health Association, a Director of the National Association for the Prevention of Tuberculosis, and a member of the American Society of Civil Engineers, New England Water Works Association, American Association for the Advancement of Science, and a sanitary and water supply expert of National prominence.—EDITOR.



HOTEL CAROLINA—"HOME" TO THOUSANDS

supplies which apply also to all public resort water supplies. The State Board of Health is given wide latitude in fixing rules and regulations covering the occupancy of watersheds that are used for public supplies and the methods useful for conserving a high hygienic standard of the water furnished the public. This end is sought through frequent inspections of the source of supply as well as through chemical and bacterial analyses at the State Laboratory of Hygiene by expert analysts under the direction of a very accomplished and skillful Director, Dr. C. A. Shore. This authority is exercised by the Board with great vigilance.

"Of my personal knowledge, covering several years of intimate acquaintance with the matter, I may say that Mr. Leonard Tufts, owner of Pinehurst, has been most scrupulous and consistent in complying with all the requirements and suggestions of the Board in his efforts to secure for Pinehurst a public water supply of the highest integrity and hygienic standard of purity. His solicitude to this end has been unusually conspicuous, showing a keen appreciation of the importance of a pure water supply as an essential adjunct to a resort for health and recreation.

"The underground source from which the supply has hitherto and is now partially obtained has been safeguarded with the greatest care. The new supply is taken from a small water shed in the sand hills, which abound in the vicinity of Pinehurst. This water shed is entirely uninhabited and not even given over to cultivation or to

MOORE CO. PARK ASSOCIATION

First Important Work Beautification of Boulevard to Jackson Springs

The Moore County Park Association, organized last winter, has entered upon its first important work in the general plan through acquisition of reservations along the Pinehurst-Jackson Springs road. The completed result will be a boulevard one hundred and twenty feet wide and the necessary land for the purpose has been contributed very largely by property owners.

An important branch of the work to be undertaken during the present season will be the solicitation of funds to be used in development of natural attractions and the permanent preservation of distinctive characteristics along public highways.

Landscape Architect Warren H. Manning of Boston will act as advisor.

Send THE OUTLOOK to Friends. It saves letter writing!