

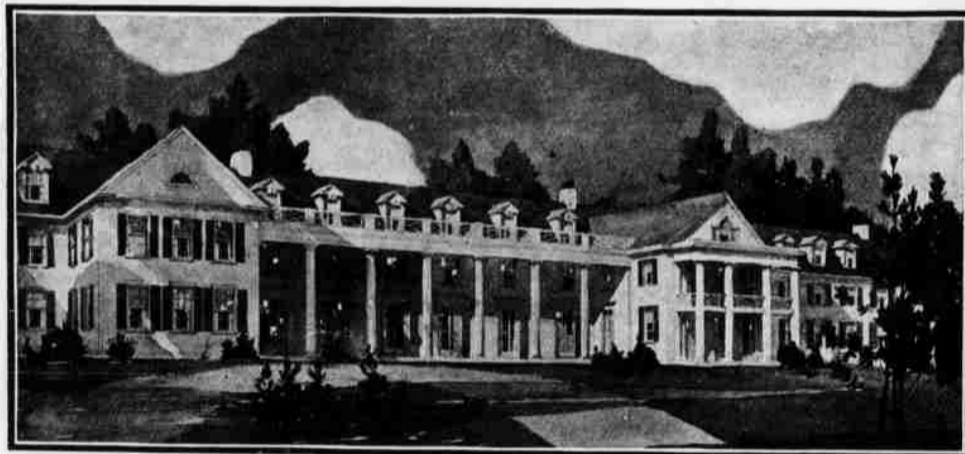
THE finest, the most unique, and the best located all-the-year resort hotel in the world is being built in Asheville, N. C. It will be opened July 1st, 1913, under the management of Wm. S. Kenney, of The Mount Washington, Bretton Woods, N. H., and Hotel Clarendon, Seabreeze, Florida.

It is being built of the great boulders of Sunset Mountain at whose foot it sits. It is being built by hand in the old fashioned way, ABSOLUTELY FIREPROOF, and will be full of rest, comfort and wholesomeness.

It is being built plainly, but as richly as man can do it. Four hundred one-piece rugs are being made at Aubusson, France; the furniture is being made by hand by the Roycrofters; the silver hand-hammered; and the "big room" will contain two great stone fire-places, capable of burning twelve-foot logs.

In front of this hotel, GROVE PARK INN, are one hundred and sixty acres of golf links and lawn, and all around, miles of majestic mountains and the wonderful climate. The Hotel Company owns eight hundred acres around the hotel and consumptives will not be taken.

For particulars address Wm. S. Kenney, Mgr., Grove Park Inn, Asheville, N. C. Southern Office until April 20th, Hotel Clarendon, Seabreeze, Florida. New York Office, 1180 Broadway.



THE HIGHLAND PINES INN

Weymouth Heights, Southern Pines, N. C.

THE Highland Pines Inn is a new hotel, Southern Colonial style, with modern conveniences and luxurious appointments. Has 60 rooms en suite with private bath. Excellent orchestra. Nightly concerts and many social events. Accommodations for 200 or 250 guests. Open December 1st to May 1st. Charmingly situated on Weymouth Heights with extensive and delightful views in all directions. Behind the Inn are the 2,000 acres of the great Weymouth Woods, among whose giant long leaf pines run many miles of hard, picturesque and well-kept roads, the freedom of which is accorded the guests of the Inn. The Southern Pines Country Club golf course five minutes walk from the hotel. Auto bus service to the Pinehurst Country Club. For rates and reservations address:

A. I. Creamer Lessees and Managers M. H. Turner
Southern Pines, North Carolina

GOLF'S NATIONAL PROMINENCE

**Directing Superintendent Ross
Outlines Important Work**



DIRECTING Superintendent Donald J. Ross, the Pinehurst Country Club expert, returned last week from a trip to Chicago where he was called to undertake the construction of what is to be the leading golf course in the West, and one of the most important commissions which has been assigned him during the extended period in which he has been regarded as National authority on golf course architecture and construction. ¶ "The property is situated at Fort Sheridan on the shore of Lake Michigan," said Mr. Ross, "and the membership is composed of one hundred and fifty of the city's leading men. No ladies will be admitted. From the appearance of the land, I am confident that a magnificent course can be constructed, and one which will be unique in the neighborhood of Chicago because of its attractive and varied natural undulations, in striking contrast with the comparatively flat land of the other courses. The work at present is merely in the preliminary stage, and I cannot, of course, go into full detail.

"A significant feature in connection with my work is the interest which is being shown by resorts, all the direct result of Pinehurst's international pre-eminence and marvelous achievement. Take, for instance, Dixville Notch and The Balsams in the White Mountains, where Mr. Henry S. Hale, the millionaire owner, has given me carte blanche orders to produce the best course in the Hills, and I can assure you that with the material I have to work upon the result is bound to equal expectation. ¶ The location of the Club house on what is known as Panorama Hill, is one of the finest in the United States and upon this vast plateau which stretches away on all sides, the course is to be laid out. For many years this land has been under cultivation and is now under pasture, a preliminary preparation which leaves no doubt in mind; but that the most desirable grasses can be grown there successfully, ensuring perfection in turf for both fair green and putting green.

"The view is a magnificent and inspiring one, stretching on over valley dotted with forest, plain, lake, stream, farm and clearing, to the distant mountains which fade away into the infinite sky on all sides. No expense is to be spared on either Club house or course, for the aim will be to make The Balsams the summer resort of Pinehurst, catering to those who desire the best. ¶ The novelty will be the provision of accommodations at the Club house, so that those who desire may live there and the public and private rooms will be charming in their artistic simplicity. The Grill also will be made much of. Adjoining the Club house are to be four tennis courts, and a Tea Room and an Assembly Hall will tend to make the Club the social center

of this beauty spot, which has long been known as the Switzerland of America. Auto hack service will run between the Club and the Hotel, a distance of some two miles, and a good road makes the journey an easy three-minute run.

"The new course which I have constructed for Mr. Morton F. Plant of the Griswold hotel at Eastern Point, Conn., will be ready for play this summer. It is beautifully located along the shore and its sea vistas are charming, suggesting the quaint picturesqueness of old world links. The variety of the holes is exceptional, the greens are large and the quality of the soil is admirably suited for the growing of those dwarf grasses which are so essential to the perfect putting green. The expense in connection with this construction has been enormous and it has not been spared. The first difficulty encountered was in blasting huge boulders and ledge rock with which the land was covered. A number of buildings also were torn down, and mark my word, there can be no more marked indication of the demand for golf courses of the highest class in connection with resort activities, than is shown by Mr. Plant's accomplishment, who by the way, is also conversant with its importance as the owner of Bellair.

"The new links of the Rhode Island Country Club which were opened for play last August, have developed into a grand course; its particular charm some of the features of the British seaside courses. Many of the hazards are sand dunes covered with bent grass, and there is an endless supply of seaside sand for bunkers. Water hazards add to the variety of difficulties which lie in wait for the player who gets off the beaten path. The distance is sixty-four hundred yards and the course is bound to be selected for many important tournaments. The problematic difficulties of construction here were most interesting, among them controlling the tides which covered a considerable area of the land. A large lake adjoining the Club house is much enjoyed during both summer and winter, and a vast beach at the front keeps one ever in contact with the subtle influence of the grand old ocean. ¶ Trap shooting and tennis are both made much of here.

"Other important work in hand and completed recently includes new courses at Kansas City, Mo., Glen Falls, N. Y., and Charlotte, N. C., and the remodeling of courses at Rochester, N. Y., Glen View Country Club, Chicago, Winchester Mass. Country Club, Cohasset, Mass. Country Club, Tedesco, Mass. Country Club, Tatnuck Country Club at Worcester, Mass., and the important work which we are always carrying out at my summer club, the Essex County of Manchester, where my connection is identical with that at Pinehurst."

Send Her Violets!

"Send her violets!" You'll find them at their best now. ¶ Phone the Pinehurst Greenhouse. *